

Vehicle Detail Report

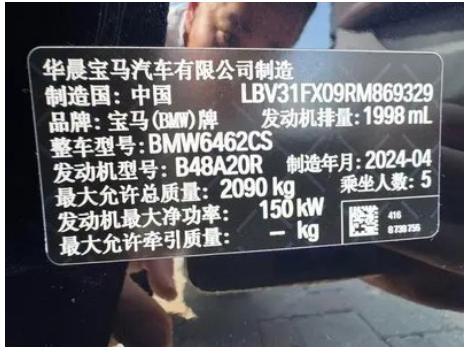
BMW X1 2023 sDrive25Li M Sports suit

Basic Information

Brand	BMW
Mileage	16,900 km
Color	Black
First Registration	2024-04-01
Transfer Count	0

Vehicle Images







Vehicle Condition

1. Driver's seat rails and frame, Signs of removal. 2. Front passenger seat rails and frame, Signs of removal.

Configuration Information

Model Information

Model Name	BMW X1 2023 sDrive25Li M Sports suit
Launch Date	2023.04

Basic parameters

Vehicle Class	Compact SUV
Energy Type	Gasoline
Maximum Power (kW)	150
Maximum Torque (N·m)	300
Transmission	7-speed wet dual-clutch
Body Type	SUV
Engine	2.0L 204 hp L4
Dimensions (L×W×H) (mm)	4616*1845 *1641
Official 0-100 km/h Acceleration (s)	7.9
Top Speed (km/h)	229
Curb Weight (kg)	1606
Maximum Gross Weight (kg)	2090
WLTP Combined Fuel Consumption (L/100km)	7.2

engine

Engine Model	B48A20R
Displacement (mL)	1998
Displacement (L)	2.0
Induction Type	Turbocharging
Cylinder Arrangement	L

engine (continued)

Number of Cylinders	4
Valves per Cylinder	4
Valve Train	DOHC
Maximum Power (PS)	204
Max Power Speed (rpm)	5000
Max Torque Speed (rpm)	1450-4500
Maximum net power (kW)	150
Fuel Grade	95.
Fuel Delivery System	Direct injection
Cylinder Head Material	Aluminum alloy
Cylinder Block Material	Aluminum alloy
Engine layout	Horizontal

Screen/System

Central control color screen	<ul style="list-style-type: none">• Touch LCD screen
Infotainment Screen Size	<ul style="list-style-type: none">• 10.7 inches
Bluetooth/In-car Phone	<ul style="list-style-type: none">•
Smartphone Integration/ Mirroring	<ul style="list-style-type: none">• Support CarPlay;• Support Android Auto
Voice recognition control system	<ul style="list-style-type: none">• Multimedia system;• Navigation;• Telephone;• Air conditioning
In-vehicle intelligent system	<ul style="list-style-type: none">• iDrive

Body

Length (mm)	4616
Width (mm)	1845
Height (mm)	1641
Wheelbase (mm)	2802
Front Track (mm)	1574
Rear Track (mm)	1575
Door Opening Type	swing door
Number of Doors	5
Number of Seats	5
Fuel Tank Capacity (L)	54
Trunk volume (L)	540-1700

Body (continued)

Drag Coefficient (Cd)	-
Approach Angle (°)	21
Departure Angle (°)	27

Gearbox

Abbreviation	7-speed wet dual-clutch
Number of Gears	7
Transmission Type	Wet Dual-Clutch Transmission (DCT)

Chassis steering

Drive Type	Front-engine, Front-wheel drive (FF)
Front Suspension Type	MacPherson independent suspension
Rear Suspension Type	Multi-link independent suspension
Power Steering Type	Electric power assistance
Vehicle structure	bearing type

Seat Configuration

Seat Material	<ul style="list-style-type: none">• Imitation leather; ○ Leather/Alcantara mix and match
Main seat adjustment	<ul style="list-style-type: none">• Front and rear adjustment; • Backrest adjustment; • Height adjustment (4-way)
Co-seat adjustment method	<ul style="list-style-type: none">• Front and rear adjustment; • Backrest adjustment; • Height adjustment (4-way)
Electric adjustment of driver's seat and passenger seat	Main •/Deputy •
Front seat functions	○ Heating (USD 441)
Electric seat memory function	<ul style="list-style-type: none">• Driving position
Front passenger seat rear adjustable buttons	-
Second row seat adjustment	<ul style="list-style-type: none">• Backrest adjustment
Rear seat folding	<ul style="list-style-type: none">• Proportional down
Front/rear center armrest	Front •/Rear •
Rear cup holder	<ul style="list-style-type: none">•
Sports style seats	<ul style="list-style-type: none">•

Active safety

Active safety (continued)

Anti-lock Braking System (ABS)	•
Electronic Brakeforce Distribution (EBD/CBC)	•
Brake Assist System (EBA/BAS/BA)	•
Traction Control System (ASR/TCS/TRC)	•
Electronic Stability Control (ESC/ESP/DSC)	•
Tire Pressure Monitoring System (TPMS)	• Tire pressure display
Seat Belt Reminder	• Full car
ISOFIX Child Seat Anchors	•
Lane Departure Warning System (LDWS)	•
Autonomous Emergency Braking (AEB)	•
Driver Fatigue Detection	•
Forward Collision Warning (FCW)	•
Rear Collision Warning	•
Emergency Call System (eCall)	•
Built-in Dashcam	○(USD 294)
Door Opening Warning (DOW)	•

Air conditioning/refrigerator

Air conditioning temperature control method	• Automatic air conditioning
Rear Independent Climate Control	-
Rear seat air vents	•
Temperature zone control	-
Car air purifier	-
In-cabin PM2.5 Filter	-

Passive safety

Driver/passenger airbag	Main •/Deputy •
Front/rear side airbags	Front •/Rear-

Passive safety (continued)

Front/rear head airbags (curtain airbags)	Front •/Rear •
Passive pedestrian protection	•

Wheel brake

Front Brake Type	Ventilation disc
Rear Brake Type	Disc
Parking brake type	Electronic Parking
Front Tire Size	245/45 R19
Rear Tire Size	245/45 R19
Spare Tire Size	None

Audio/Interior Lighting

Speaker Brand Name	○Harman/Kardon (USD 735)
Number of speakers	• 6 horns; ○ 12 horns
Interior ambient lighting	• Multicolor

Driving functions

Navigation traffic information display	•
Lane assist	•
Lane Keeping Assist System	•
Cruise control system	• Cruise control; ○ Adaptive cruise control; ○ Full-speed adaptive cruise control
Satellite navigation system	•
Driving assistance level	○L2
Rear Cross Traffic Alert	•
Lane centering	○
Road traffic sign recognition	•
Tracking reverse	•
Parking Assist	•
Lane Change Assist	○

Exterior lighting

Low beam light source	•LED
High beam light source	•LED

Exterior lighting (continued)

LED daytime running lights	<ul style="list-style-type: none">•
Adaptive high and low beam	<ul style="list-style-type: none">•
Automatic headlights	<ul style="list-style-type: none">•
Height-adjustable headlights	<ul style="list-style-type: none">•
Headlight Delay Off	<ul style="list-style-type: none">•

Exterior mirrors

Exterior mirror function	<ul style="list-style-type: none">• Electric adjustment;• Electric folding;• Rearview mirror memory;• Rearview mirror heating;• Automatic downturning when reversing;• Automatic folding when locked;○ Automatic anti-glare
---------------------------------	-------------------------------------------------------------------------------------------------------------------------------------------------------------------------------------------------------------------------------------------------------------------------------------------------

Appearance/anti-theft

Rim material	<ul style="list-style-type: none">• Aluminum alloy
Electric trunk	<ul style="list-style-type: none">•
Electronic engine immobilizer	<ul style="list-style-type: none">•
Central locking system in the car	<ul style="list-style-type: none">•
Key Type	<ul style="list-style-type: none">• Remote key;• Bluetooth key;• NFC/RFID key;• UWB digital key
Keyless start system	<ul style="list-style-type: none">•
Keyless entry function	<ul style="list-style-type: none">○ Front row (USD 441)
Appearance Kit	<ul style="list-style-type: none">• Sports style
Hands-free Trunk	<ul style="list-style-type: none">○
Electric trunk position memory	<ul style="list-style-type: none">•
Roof rack	<ul style="list-style-type: none">•

Skylight/Glass

Sunroof Type	<ul style="list-style-type: none">• Panoramic sunroof cannot be opened
Front/rear electric windows	Front •/Rear •
One-touch window lifting function	<ul style="list-style-type: none">• Full car
Window anti-pinch function	<ul style="list-style-type: none">•

Skylight/Glass (continued)

Car makeup mirror	<ul style="list-style-type: none">• Main driver's lamp; • co-pilot's lamp
Rear wiper	<ul style="list-style-type: none">•
Rain sensor wiper function	<ul style="list-style-type: none">• Rainfall-sensing

Interior and exterior color

Exterior Color	Shining copper ash:#909090; Carbon black:#232A30; Skyscraper ash:#808686; Porty blue:#1459A0; Ore white:#E7E7E7
Interior Color	Black/Coral Red:#000000/#9E2F35; Black/Mocha:#000000/#423534; Black:#000000

Steering wheel/interior mirror

Steering Wheel Material	<ul style="list-style-type: none">• Leather
Steering wheel position adjustment	<ul style="list-style-type: none">• Manual up and down front and rear adjustment
Multi-function steering wheel	<ul style="list-style-type: none">•
Heated Steering Wheel	-
Steering wheel memory	-
Trip computer display screen	<ul style="list-style-type: none">• Color
Full LCD instrument panel	<ul style="list-style-type: none">•
LCD instrument size	<ul style="list-style-type: none">• 10.25 inches
Interior rearview mirror function	<ul style="list-style-type: none">• Manual anti-glare; ○ Automatic anti-glare
Gear shifting	<ul style="list-style-type: none">• Electronic gear shift
HUD Head Up Digital Display	○(USD 1,324)
ETC Device	○(USD 147)

Intelligent configuration

Connected Car Services	<ul style="list-style-type: none">•
OTA Updates	<ul style="list-style-type: none">•
4G/5G Network	<ul style="list-style-type: none">• 4G;○ 5G(USD 368)

Driving Control

Driving mode switch	<ul style="list-style-type: none">• Movement; • Economy; • Customization/Personalization
Automatic parking	<ul style="list-style-type: none">•

Driving Control (continued)

Hill start assist	•
Engine start-stop technology	•

Driving Hardware

Front/rear parking radar	Front •/Rear •
Driving Assistance Camera System	• Reversing image; ○ 360-degree panoramic image (USD 809)

In-car charging

Multimedia/charging port	•Type-C
Number of USB/Type-C ports	• 2 in the front row/2 in the back row
Mobile phone wireless charging function	• Front row

Optional Package

Optional Package	Automatic parking assist system Plus(USD 809; Including: Automatic Parking Assist System Plus); Autonomous Driving Assistance System Plus(USD 882; Including: Autonomous Driving Assistance System Plus); Autonomous Driving Assistance System Pro(USD 4,044; Including: Autonomous Driving Assistance System Pro)
-------------------------	---------------------------------------------------------------------------------------------------------------------------------------------------------------------------------------------------------------------------------------------------------------------------------------------------------------------

"●" = Standard equipment

"-" = Not available

"○" = Optional equipment.

Note: These are Chinese market vehicles. Warranty coverage is not available outside of China.