

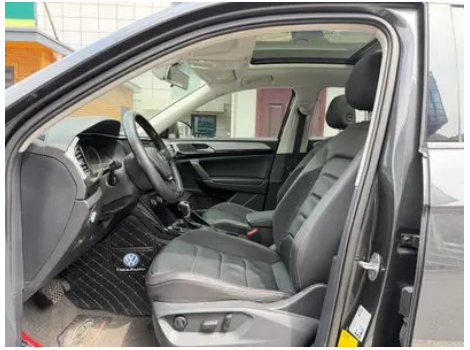
# Vehicle Detail Report

Volkswagen Tayron 2019 330TSI Two-wheel-drive luxury model Country VI

## Basic Information

Brand	Volkswagen
Mileage	103,000 km
Color	Black
First Registration	2020-04-01
Transfer Count	1

## Vehicle Images





## Vehicle Condition

1. Original metal body panels with factory paint.

## Configuration Information

### Model Information

<b>Model Name</b>	Volkswagen Tayron 2019 330TSI Two-wheel-drive luxury model country VI
<b>Launch Date</b>	2019.05

### Basic parameters

<b>Vehicle Class</b>	Mid-size SUV
<b>Energy Type</b>	Gasoline
<b>Maximum Power (kW)</b>	137
<b>Maximum Torque (N·m)</b>	320
<b>Transmission</b>	7-speed wet dual-clutch
<b>Body Type</b>	SUV
<b>Engine</b>	2.0T 186 horsepower L4
<b>Dimensions (L×W×H) (mm)</b>	4589*1860*1660
<b>Official 0-100 km/h Acceleration (s)</b>	8.7
<b>Top Speed (km/h)</b>	200
<b>Curb Weight (kg)</b>	1645
<b>Maximum Gross Weight (kg)</b>	-

## Basic parameters (continued)

<b>NEDC Combined Fuel Consumption (L/100km)</b>	6.7
---	-----

## engine

<b>Engine Model</b>	EA888-DKV
<b>Displacement (mL)</b>	1984
<b>Displacement (L)</b>	2.0
<b>Induction Type</b>	Turbocharging
<b>Cylinder Arrangement</b>	L
<b>Number of Cylinders</b>	4
<b>Valves per Cylinder</b>	4
<b>Valve Train</b>	DOHC
<b>Maximum Power (PS)</b>	186
<b>Max Power Speed (rpm)</b>	5000
<b>Max Torque Speed (rpm)</b>	1600-4000
<b>Maximum net power (kW)</b>	-
<b>Fuel Grade</b>	95.
<b>Fuel Delivery System</b>	Mixed injection
<b>Cylinder Head Material</b>	Aluminum alloy
<b>Cylinder Block Material</b>	Cast iron

## Screen/System

<b>Central control color screen</b>	<ul style="list-style-type: none"><li>• Touch LCD screen</li></ul>
<b>Infotainment Screen Size</b>	<ul style="list-style-type: none"><li>•6.5 inches</li></ul>
<b>Bluetooth/In-car Phone</b>	<ul style="list-style-type: none"><li>•</li></ul>
<b>Smartphone Integration/Mirroring</b>	<ul style="list-style-type: none"><li>• Support CarPlay;</li><li>• Support CarLife;</li><li>• Factory interconnection/mapping</li></ul>
<b>Voice recognition control system</b>	<ul style="list-style-type: none"><li>• Multimedia system;</li><li>• Telephone</li></ul>

## Body

<b>Length (mm)</b>	4589
<b>Width (mm)</b>	1860
<b>Height (mm)</b>	1660
<b>Wheelbase (mm)</b>	2731
<b>Front Track (mm)</b>	1576
<b>Rear Track (mm)</b>	1566

## Body (continued)

<b>Door Opening Type</b>	swing door
<b>Number of Doors</b>	5
<b>Number of Seats</b>	5
<b>Fuel Tank Capacity (L)</b>	60
<b>Trunk volume (L)</b>	506-1590
<b>Drag Coefficient (Cd)</b>	-
<b>Approach Angle (°)</b>	21
<b>Departure Angle (°)</b>	19

## Gearbox

<b>Abbreviation</b>	7-speed wet dual-clutch
<b>Number of Gears</b>	7
<b>Transmission Type</b>	Wet Dual-Clutch Transmission (DCT)

## Chassis steering

<b>Drive Type</b>	Front-engine, Front-wheel drive (FF)
<b>Front Suspension Type</b>	MacPherson independent suspension
<b>Rear Suspension Type</b>	Multi-link independent suspension
<b>Power Steering Type</b>	Electric power assistance
<b>Vehicle structure</b>	bearing type

## Seat Configuration

<b>Seat Material</b>	• Leather/Alcantara Mix
<b>Main seat adjustment</b>	• Front and rear adjustment; • Backrest adjustment; • Height adjustment (4-way); • Lumbar support (4-way)
<b>Co-seat adjustment method</b>	• Front and rear adjustment; • Backrest adjustment; • Height adjustment (4-way); • Lumbar support (4-way)
<b>Electric adjustment of driver's seat and passenger seat</b>	Main •/Deputy •
<b>Front seat functions</b>	○ Heating
<b>Front passenger seat rear adjustable buttons</b>	-
<b>Second row seat adjustment</b>	• Front and rear adjustment; • Backrest adjustment
<b>Rear seat folding</b>	• Proportional down

## Seat Configuration (continued)

<b>Front/rear center armrest</b>	Front •/Rear •
<b>Rear cup holder</b>	•

## Active safety

<b>Anti-lock Braking System (ABS)</b>	•
<b>Electronic Brakeforce Distribution (EBD/CBC)</b>	•
<b>Brake Assist System (EBA/BAS/BA)</b>	•
<b>Traction Control System (ASR/TCS/TRC)</b>	•
<b>Electronic Stability Control (ESC/ESP/DSC)</b>	•
<b>Tire Pressure Monitoring System (TPMS)</b>	• Tire pressure alarm
<b>Seat Belt Reminder</b>	• Full car
<b>ISOFIX Child Seat Anchors</b>	•
<b>Lane Departure Warning System (LDWS)</b>	-
<b>Autonomous Emergency Braking (AEB)</b>	•
<b>Driver Fatigue Detection</b>	-

## Air conditioning/refrigerator

<b>Air conditioning temperature control method</b>	• Automatic air conditioning
<b>Rear Independent Climate Control</b>	•
<b>Rear seat air vents</b>	•
<b>Temperature zone control</b>	•
<b>Car air purifier</b>	-
<b>In-cabin PM2.5 Filter</b>	•

## Passive safety

<b>Driver/passenger airbag</b>	Main •/Deputy •
<b>Front/rear side airbags</b>	Front •/Rear-
<b>Front/rear head airbags (curtain airbags)</b>	Front •/Rear •
<b>Knee airbag</b>	• Main driver knee airbag

## Wheel brake

## Wheel brake (continued)

<b>Front Brake Type</b>	Ventilation disc
<b>Rear Brake Type</b>	Disc
<b>Parking brake type</b>	Electronic Parking
<b>Front Tire Size</b>	235/55 R18
<b>Rear Tire Size</b>	235/55 R18
<b>Spare Tire Size</b>	Not full-size

## Audio/Interior Lighting

<b>Number of speakers</b>	<ul style="list-style-type: none"><li>• 6 speakers</li></ul>
<b>Interior ambient lighting</b>	<ul style="list-style-type: none"><li>• Monochrome</li></ul>

## Driving functions

<b>Navigation traffic information display</b>	-
<b>Lane assist</b>	-
<b>Lane Keeping Assist System</b>	-
<b>Cruise control system</b>	<ul style="list-style-type: none"><li>• Cruise control</li></ul>
<b>Satellite navigation system</b>	-
<b>Parking Assist</b>	-

## Exterior lighting

<b>Low beam light source</b>	<ul style="list-style-type: none"><li>•LED</li></ul>
<b>High beam light source</b>	<ul style="list-style-type: none"><li>•LED</li></ul>
<b>LED daytime running lights</b>	<ul style="list-style-type: none"><li>•</li></ul>
<b>Adaptive high and low beam</b>	-
<b>Automatic headlights</b>	○
<b>Front fog lights</b>	<ul style="list-style-type: none"><li>•LED</li></ul>
<b>Height-adjustable headlights</b>	<ul style="list-style-type: none"><li>•</li></ul>
<b>Headlight Delay Off</b>	○
<b>Turn signal lamp</b>	<ul style="list-style-type: none"><li>•</li></ul>

## Exterior mirrors

<b>Exterior mirror function</b>	<ul style="list-style-type: none"><li>•Electric adjustment;</li><li>•Electric folding;</li><li>•Rearview mirror heating;</li><li>•Automatically turn down when reversing;</li><li>•Automatically fold when locking the car</li></ul>
---------------------------------	--

## Appearance/anti-theft

## Appearance/anti-theft (continued)

<b>Rim material</b>	• Aluminum alloy
<b>Electric trunk</b>	-
<b>Electronic engine immobilizer</b>	•
<b>Central locking system in the car</b>	•
<b>Key Type</b>	• Remote key
<b>Keyless start system</b>	•
<b>Keyless entry function</b>	• Front row
<b>Roof rack</b>	•

## Skylight/Glass

<b>Sunroof Type</b>	• Openable panoramic sunroof
<b>Front/rear electric windows</b>	Front •/Rear •
<b>One-touch window lifting function</b>	• Full car
<b>Window anti-pinch function</b>	•
<b>Car makeup mirror</b>	• Main driver's lamp; • co-pilot's lamp
<b>Rear wiper</b>	•
<b>Rain sensor wiper function</b>	<input type="radio"/> Rainfall-sensing
<b>Heated water nozzle</b>	<input type="radio"/>

## Interior and exterior color

<b>Exterior Color</b>	Polar white:#FFFFFF; Mars brown:#4B4542; Vigor orange:#CAA148; Caribbean blue:#0000F0; Colorado gold:#BD984A; Rose red:#DC1E32; Manganese stone black:#010101; Xingyao gold:#B4A08C
<b>Interior Color</b>	Black:#252B2A

## Steering wheel/interior mirror

<b>Steering Wheel Material</b>	• Leather
<b>Steering wheel position adjustment</b>	• Manual up and down front and rear adjustment
<b>Multi-function steering wheel</b>	•
<b>Heated Steering Wheel</b>	<input type="radio"/>

## Steering wheel/interior mirror (continued)

<b>Steering wheel memory</b>	-
<b>Trip computer display screen</b>	• Color
<b>Full LCD instrument panel</b>	-
<b>Interior rearview mirror function</b>	• Manual anti-glare; ○ Automatic anti-glare

## Intelligent configuration

<b>Connected Car Services</b>	-
<b>OTA Updates</b>	-

## Driving Control

<b>Driving mode switch</b>	• Sport; • Economy; • Standard/Comfort
<b>Automatic parking</b>	•
<b>Hill start assist</b>	•
<b>Engine start-stop technology</b>	•

## Driving Hardware

<b>Front/rear parking radar</b>	Front-/Rear •
---------------------------------	---------------

## In-car charging

<b>Multimedia/charging port</b>	•USB
<b>Number of USB/Type-C ports</b>	• 1 in the front row/2 in the back row
<b>Luggage compartment 12V power socket</b>	•

## Optional Package

<b>Optional Package</b>	Light assist package (USD 0.15; including: headlights are automatically turned on to take home, intelligent rain sensor, automatic anti-glare inner rearview mirror); warm winter package (USD 0.15; including: front seat heating, steering wheel heating, Front windshield cleaning nozzle heating)
-------------------------	---

---

"●" = Standard equipment

"□" = Not available

"○" = Optional equipment.

Note: These are Chinese market vehicles. Warranty coverage is not available outside of China.