

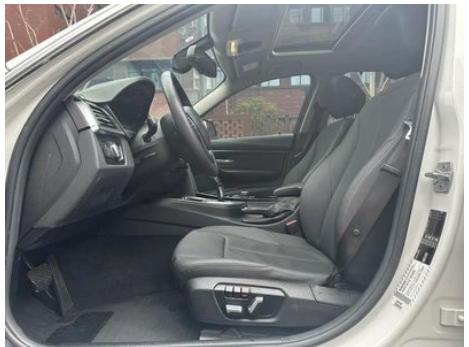
Vehicle Detail Report

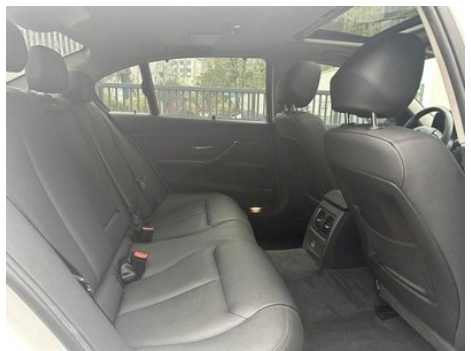
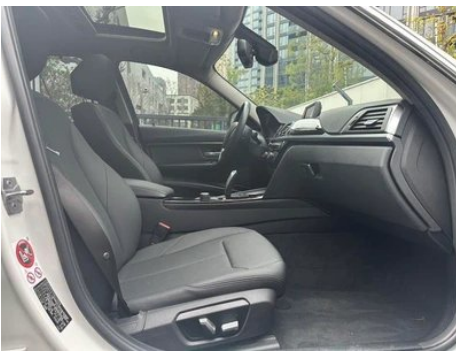
BMW 3 Series 2017 320Li fashion type

Basic Information

Brand	BMW
Mileage	84,000 km
Color	White
First Registration	2017-04-01
Transfer Count	0

Vehicle Images





Vehicle Condition

1. Driver seat rails and frame, Signs of disassembly. 2. Passenger seat rails and frame, Signs of disassembly. 3. Left rear fender, Paint repair, Bodywork repair.

Configuration Information

Model Information

Model Information (continued)

Model Name	BMW 3 Series 2 2017 320Li Luxury Model
Launch Date	2016.09

Basic parameters

Vehicle Class	Mid-size car
Energy Type	Gasoline
Maximum Power (kW)	135
Maximum Torque (N·m)	270
Transmission	8-gear manual integration
Body Type	Sedan
Engine	2.0L 184 hp L4
Dimensions (L×W×H) (mm)	4753*1811*1455
Official 0-100 km/h Acceleration (s)	7.9
Top Speed (km/h)	235
Curb Weight (kg)	-
Maximum Gross Weight (kg)	-
NEDC Combined Fuel Consumption (L/100km)	6.2

engine

Engine Model	B48B20C
Displacement (mL)	1998
Displacement (L)	2.0
Induction Type	Turbocharging
Cylinder Arrangement	L
Number of Cylinders	4
Valves per Cylinder	4
Valve Train	DOHC
Maximum Power (PS)	184
Max Power Speed (rpm)	5000-6500
Max Torque Speed (rpm)	1350-4600
Maximum net power (kW)	-
Fuel Grade	95.
Fuel Delivery System	Direct injection

engine (continued)

Cylinder Head Material	Aluminum alloy
Cylinder Block Material	Aluminum alloy

Screen/System

Central control color screen	<ul style="list-style-type: none">•
Infotainment Screen Size	•6.5 inches; ○8.8 inches
Bluetooth/In-car Phone	<ul style="list-style-type: none">•
In-car CD/DVD Player	<ul style="list-style-type: none">• Single disc CD

Body

Length (mm)	4753
Width (mm)	1811
Height (mm)	1455
Wheelbase (mm)	2920
Front Track (mm)	1543
Rear Track (mm)	1583
Door Opening Type	-
Number of Doors	4
Number of Seats	5
Fuel Tank Capacity (L)	60
Trunk volume (L)	480
Drag Coefficient (Cd)	-

Gearbox

Abbreviation	8-gear manual integration
Number of Gears	8
Transmission Type	Automatic Transmission with Manual Mode (AT)

Chassis steering

Drive Type	Front-engine, Rear-wheel drive (FR)
Front Suspension Type	Dual-ball-joint MacPherson independent suspension
Rear Suspension Type	Multi-link independent suspension
Power Steering Type	Electric power assistance
Vehicle structure	bearing type

Seat Configuration

Seat Material	○ Genuine leather (USD 1,838); • Faux leather
----------------------	---

Seat Configuration (continued)

Main seat adjustment	• Front and rear adjustment; • Backrest adjustment; • Height adjustment (2-way); ○ Height adjustment (4-way)
Co-seat adjustment method	• Front and rear adjustment; • Backrest adjustment
Electric adjustment of driver's seat and passenger seat	Main •/Deputy •
Front seat functions	○ Heating (USD 485)
Electric seat memory function	•
Front passenger seat rear adjustable buttons	•
Rear seat folding	• Proportional down
Front/rear center armrest	Front •/Rear •
Rear cup holder	•

Active safety

Anti-lock Braking System (ABS)	•
Electronic Brakeforce Distribution (EBD/CBC)	•
Brake Assist System (EBA/BAS/BA)	•
Traction Control System (ASR/TCS/TRC)	•
Electronic Stability Control (ESC/ESP/DSC)	•
Tire Pressure Monitoring System (TPMS)	•
Seat Belt Reminder	•
ISOFIX Child Seat Anchors	•
Lane Departure Warning System (LDWS)	-
Autonomous Emergency Braking (AEB)	-
Driver Fatigue Detection	-
Emergency Call System (eCall)	•

Air conditioning/refrigerator

Air conditioning/refrigerator (continued)

Air conditioning temperature control method	• Automatic air conditioning
Rear Independent Climate Control	-
Rear seat air vents	•
Temperature zone control	•
Car air purifier	-
In-cabin PM2.5 Filter	-

Passive safety

Driver/passenger airbag	Main •/Deputy •
Front/rear side airbags	Front •/Rear-
Front/rear head airbags (curtain airbags)	Front •/Rear •
Run-flat tires	•

Wheel brake

Front Brake Type	Ventilation disc
Rear Brake Type	Ventilation disc
Parking brake type	handbrake
Front Tire Size	225/50 R17
Rear Tire Size	225/50 R17
Spare Tire Size	None

Audio/Interior Lighting

Speaker Brand Name	<input type="radio"/> Harman/Kardon Harman Kardon (USD 1,426)
Number of speakers	<input type="radio"/> ≥12 speakers; •6-7 speakers
Interior ambient lighting	•

Driving functions

Navigation traffic information display	-
Lane assist	-
Lane Keeping Assist System	-
Cruise control system	<input type="radio"/> Cruise control
Satellite navigation system	<input type="radio"/>
Parking Assist	<input type="radio"/>

Exterior lighting

Exterior lighting (continued)

Low beam light source	•LED
High beam light source	•LED
LED daytime running lights	•
Adaptive high and low beam	-
Automatic headlights	•
Front fog lights	•
Height-adjustable headlights	•
Headlight Delay Off	-
Turn headlights	○

Exterior mirrors

Exterior mirror function	• Electric adjustment; • Electric folding; • Rearview mirror memory; • Rearview mirror heating; • Automatic anti-glare
---------------------------------	--

Appearance/anti-theft

Rim material	• Aluminum alloy
Electric trunk	-
Electronic engine immobilizer	•
Central locking system in the car	•
Key Type	• Remote key
Keyless start system	•
Keyless entry function	○
Hands-free Trunk	○

Skylight/Glass

Sunroof Type	• Electric sunroof
Front/rear electric windows	Front •/Rear •
One-touch window lifting function	• Full car
Window anti-pinch function	•
Car makeup mirror	•
Rear wiper	-

Skylight/Glass (continued)

Rain sensor wiper function	•
Rear side window sunshades	•

Interior and exterior color

Exterior Color	Ore white:#E7E7E7; Gem green:#242224; Glacier silver:#949A9C; Havana ash:#48413B; Cashmi silver:#C6C1B4; Melbourne red:#610303; Snow mountain white:#FAFAFA; Chestnut copper brown:#8A411B
Interior Color	Black:#000000; Black/Veneto Beige:#000000/#CDB589; Pearl Ostel White:#DEDEDE

Steering wheel/interior mirror

Steering Wheel Material	• Cortex
Steering wheel position adjustment	• Manual up and down front and rear adjustment
Multi-function steering wheel	•
Heated Steering Wheel	○
Steering wheel memory	-
Trip computer display screen	•
Full LCD instrument panel	-
Interior rearview mirror function	• Automatic anti-glare
HUD Head Up Digital Display	○

Intelligent configuration

Connected Car Services	○
OTA Updates	-

Driving Control

Automatic parking	-
Hill start assist	•
Variable steering ratio	○
Engine start-stop technology	•

Driving Hardware

Driving Hardware (continued)

Front/rear parking radar	Front •/Rear •
Driving Assistance Camera System	○ Reversing image

In-car charging

Multimedia/charging port	•USB;•AUX
---------------------------------	-----------

"●" = Standard equipment

"_" = Not available

"○" = Optional equipment.

Note: These are Chinese market vehicles. Warranty coverage is not available outside of China.