

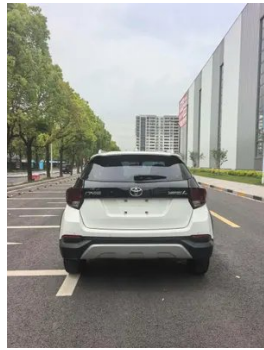
Vehicle Detail Report

Toyota Yaris L 2020 Vibrant X 1.5L CVT Leading Edition

Basic Information

Brand	Toyota
Mileage	47,000 km
Color	White
First Registration	2019-11-01
Transfer Count	1

Vehicle Images





Vehicle Condition

1. Driver's seat rails and frame, Signs of removal.

Configuration Information

Model Information

Model Name	Toyota Yaris L 2020 Vibrant X 1.5L CVT Leading Edition
Launch Date	2019.10

Basic parameters

Vehicle Class	Small car
Energy Type	Gasoline
Maximum Power (kW)	81
Maximum Torque (N·m)	138
Transmission	CVT continuously variable transmission (simulates 8 speeds)
Body Type	Hatchback Crossover
Engine	1.5L 110 horsepower L4
Dimensions (L×W×H) (mm)	4160*1720*1520
Official 0-100 km/h Acceleration (s)	11.6
Top Speed (km/h)	-
Curb Weight (kg)	-
Maximum Gross Weight (kg)	-
NEDC Combined Fuel Consumption (L/100km)	5.2

engine

Engine Model	7NR
Displacement (mL)	1496
Displacement (L)	1.5
Induction Type	Natural aspiration
Cylinder Arrangement	L

engine (continued)

Number of Cylinders	4
Valves per Cylinder	4
Valve Train	DOHC
Maximum Power (PS)	110
Max Power Speed (rpm)	6000
Max Torque Speed (rpm)	4200
Maximum net power (kW)	-
Fuel Grade	92.
Fuel Delivery System	Multi-point EFI
Cylinder Head Material	Aluminum alloy
Cylinder Block Material	Aluminum alloy
Engine-specific technologies	Dual VVT-i variable valve timing system

Screen/System

Bluetooth/In-car Phone	•
-------------------------------	---

Body

Length (mm)	4160
Width (mm)	1720
Height (mm)	1520
Wheelbase (mm)	2550
Front Track (mm)	1460
Rear Track (mm)	1460
Door Opening Type	swing door
Number of Doors	5
Number of Seats	5
Fuel Tank Capacity (L)	42
Trunk volume (L)	326
Drag Coefficient (Cd)	-
Approach Angle (°)	14
Departure Angle (°)	14

Gearbox

Abbreviation	CVT continuously variable transmission (simulates 8 speeds)
Number of Gears	8

Gearbox (continued)

Transmission Type	Continuously Variable Transmission (CVT)
--------------------------	--

Chassis steering

Drive Type	Front-engine, Front-wheel drive (FF)
Front Suspension Type	MacPherson independent suspension
Rear Suspension Type	Torsion beam non-independent suspension
Power Steering Type	Electric power assistance
Vehicle structure	bearing type

Seat Configuration

Seat Material	<ul style="list-style-type: none">• Fabric
Main seat adjustment	<ul style="list-style-type: none">• Front and rear adjustment;• Backrest adjustment;• Height adjustment (2-way)
Co-seat adjustment method	<ul style="list-style-type: none">• Front and rear adjustment;• Backrest adjustment
Electric adjustment of driver's seat and passenger seat	-
Front passenger seat rear adjustable buttons	-
Rear seat folding	<ul style="list-style-type: none">• Proportional down
Front/rear center armrest	Front •/Rear-
Rear cup holder	<ul style="list-style-type: none">•

Active safety

Anti-lock Braking System (ABS)	<ul style="list-style-type: none">•
Electronic Brakeforce Distribution (EBD/CBC)	<ul style="list-style-type: none">•
Brake Assist System (EBA/BAS/BA)	<ul style="list-style-type: none">•
Traction Control System (ASR/TCS/TRC)	<ul style="list-style-type: none">•
Electronic Stability Control (ESC/ESP/DSC)	<ul style="list-style-type: none">•
Tire Pressure Monitoring System (TPMS)	<ul style="list-style-type: none">• Tire pressure alarm
Seat Belt Reminder	<ul style="list-style-type: none">• Front row
ISOFIX Child Seat Anchors	<ul style="list-style-type: none">•

Active safety (continued)

Lane Departure Warning System (LDWS)	-
Autonomous Emergency Braking (AEB)	-
Driver Fatigue Detection	-

Air conditioning/refrigerator

Air conditioning temperature control method	• Manual air conditioning
Rear Independent Climate Control	-
Rear seat air vents	-
Temperature zone control	-
Car air purifier	-
In-cabin PM2.5 Filter	-

Passive safety

Driver/passenger airbag	Main •/Deputy •
Front/rear side airbags	-
Front/rear head airbags (curtain airbags)	-

Wheel brake

Front Brake Type	Ventilation disc
Rear Brake Type	Drum type
Parking brake type	handbrake
Front Tire Size	185/60 R15
Rear Tire Size	185/60 R15
Spare Tire Size	Not full-size

Audio/Interior Lighting

Number of speakers	• 2 Horns
---------------------------	-----------

Driving functions

Navigation traffic information display	-
Lane assist	-
Lane Keeping Assist System	-
Satellite navigation system	-
Parking Assist	-

Exterior lighting

Low beam light source	•LED
High beam light source	•LED
LED daytime running lights	•
Adaptive high and low beam	-
Automatic headlights	-
Height-adjustable headlights	•
Headlight Delay Off	-

Exterior mirrors

Exterior mirror function	• Electric adjustment
---------------------------------	-----------------------

Appearance/anti-theft

Rim material	• Steel
Central locking system in the car	•
Key Type	• Remote key
Keyless start system	-
Roof rack	•

Skylight/Glass

Front/rear electric windows	Front •/Rear •
Window anti-pinch function	-
Rear wiper	•

Interior and exterior color

Exterior Color	Sky White #FEFEFE Aurora Blue #2E8CBD Lemon yellow #EBDA68 Coral red #820305 Lightning Orange #F36912 Crystal Silver #9BA8AB dazzle crystal black #030303
Interior Color	Black:#414544; Black/Beige:#414544/#F8E9D1

Steering wheel/interior mirror

Steering Wheel Material	• Plastic
Steering wheel position adjustment	• Manual up and down adjustment
Multi-function steering wheel	-

Steering wheel/interior mirror (continued)

Heated Steering Wheel	-
Steering wheel memory	-
Full LCD instrument panel	-
Interior rearview mirror function	• Manual anti-glare

Intelligent configuration

Connected Car Services	-
OTA Updates	-

Driving Control

Automatic parking	-
Hill start assist	•
Engine start-stop technology	•

Driving Hardware

Front/rear parking radar	Front-/Rear •
---------------------------------	---------------

In-car charging

Multimedia/charging port	•USB
Number of USB/Type-C ports	• 1 in the front row

"●" = Standard equipment

"-" = Not available

"○" = Optional equipment.

Note: These are Chinese market vehicles. Warranty coverage is not available outside of China.