

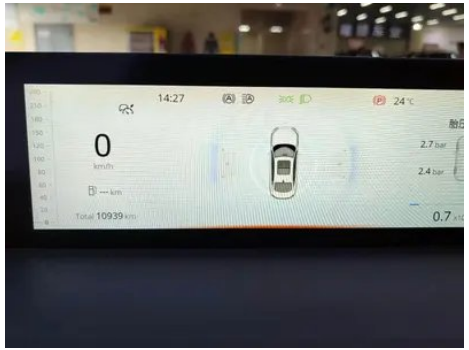
Vehicle Detail Report

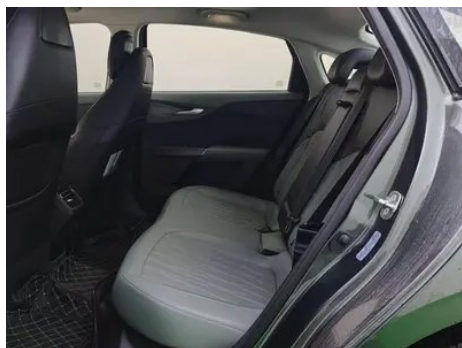
Changan Lamore 2023 1.5T GDI Automatic Flagship

Basic Information

Brand	Changan
Mileage	10,000 km
Color	Green
First Registration	2023-03-01
Transfer Count	0

Vehicle Images





Vehicle Condition

1. Original metal body panels with factory paint.

Configuration Information

Model Information

Model Name	Changan Lamore 2023 Blue whale NE 1.5T GDI DCT Flagship
Launch Date	2023.03

Basic parameters

Vehicle Class	compact car
Energy Type	Gasoline
Maximum Power (kW)	125
Maximum Torque (N·m)	260
Transmission	7-speed wet dual-clutch
Body Type	Sedan
Engine	1.5T 170 horsepower L4
Dimensions (L×W×H) (mm)	4770*1840*1450
Official 0-100 km/h Acceleration (s)	-
Top Speed (km/h)	200
Curb Weight (kg)	1356
Maximum Gross Weight (kg)	1760
WLTP Combined Fuel Consumption (L/100km)	5.99

engine

Engine Model	JL473ZQA
Displacement (mL)	1494
Displacement (L)	1.5
Induction Type	Turbocharging
Cylinder Arrangement	L
Number of Cylinders	4
Valves per Cylinder	4
Valve Train	DOHC
Maximum Power (PS)	170
Max Power Speed (rpm)	5500
Max Torque Speed (rpm)	1500-4000
Maximum net power (kW)	122
Fuel Grade	92.
Fuel Delivery System	Direct injection
Cylinder Head Material	Aluminum alloy
Cylinder Block Material	Aluminum alloy
Engine layout	Horizontal

Screen/System

Central control color screen	<ul style="list-style-type: none">• Touch LCD screen
Infotainment Screen Size	<ul style="list-style-type: none">• 13.2 inches
Bluetooth/In-car Phone	<ul style="list-style-type: none">•
Voice recognition control system	<ul style="list-style-type: none">• Multimedia system;• Navigation;• Telephone;• Air conditioning;• Sunroof;• Windows
Facial Recognition	<ul style="list-style-type: none">•
Car Intelligent Chip	MediaTek MT8666
Gesture Control	<ul style="list-style-type: none">•

Body

Length (mm)	4770
Width (mm)	1840
Height (mm)	1450
Wheelbase (mm)	2765
Front Track (mm)	1575
Rear Track (mm)	1585

Body (continued)

Door Opening Type	swing door
Number of Doors	4
Number of Seats	5
Fuel Tank Capacity (L)	51
Trunk volume (L)	520
Drag Coefficient (Cd)	-
Approach Angle (°)	14
Departure Angle (°)	18

Gearbox

Abbreviation	7-speed wet dual-clutch
Number of Gears	7
Transmission Type	Wet Dual-Clutch Transmission (DCT)

Chassis steering

Drive Type	Front-engine, Front-wheel drive (FF)
Front Suspension Type	MacPherson independent suspension
Rear Suspension Type	Torsion beam non-independent suspension
Power Steering Type	Electric power assistance
Vehicle structure	bearing type

Seat Configuration

Seat Material	<ul style="list-style-type: none">• Imitation leather
Main seat adjustment	<ul style="list-style-type: none">• Front and rear adjustment;• Backrest adjustment;• Height adjustment (2-way)
Co-seat adjustment method	<ul style="list-style-type: none">• Front and rear adjustment;• Backrest adjustment
Electric adjustment of driver's seat and passenger seat	Main •/Deputy •
Front seat functions	<ul style="list-style-type: none">• Heating (driving only)
Front passenger seat rear adjustable buttons	-
Rear seat folding	<ul style="list-style-type: none">• Overall down
Front/rear center armrest	Front •/Rear •
Rear cup holder	<ul style="list-style-type: none">•

Active safety

Active safety (continued)

Anti-lock Braking System (ABS)	•
Electronic Brakeforce Distribution (EBD/CBC)	•
Brake Assist System (EBA/BAS/BA)	•
Traction Control System (ASR/TCS/TRC)	•
Electronic Stability Control (ESC/ESP/DSC)	•
Tire Pressure Monitoring System (TPMS)	• Tire pressure display
Seat Belt Reminder	• Front row
ISOFIX Child Seat Anchors	•
Lane Departure Warning System (LDWS)	•
Autonomous Emergency Braking (AEB)	•
Driver Fatigue Detection	•
Forward Collision Warning (FCW)	•
Rear Collision Warning	•
Built-in Dashcam	○
Door Opening Warning (DOW)	•

Air conditioning/refrigerator

Air conditioning temperature control method	• Automatic air conditioning
Rear Independent Climate Control	-
Rear seat air vents	•
Temperature zone control	-
Car air purifier	-
In-cabin PM2.5 Filter	•
Negative ion generator	•

Passive safety

Driver/passenger airbag	Main •/Deputy •
Front/rear side airbags	Front •/Rear-

Passive safety (continued)

Front/rear head airbags (curtain airbags)	Front •/Rear •
--	----------------

Wheel brake

Front Brake Type	Ventilation disc
Rear Brake Type	Disc
Parking brake type	Electronic Parking
Front Tire Size	225/45 R18
Rear Tire Size	225/45 R18
Spare Tire Size	Not full-size

Audio/Interior Lighting

Number of speakers	• 6 speakers
Interior ambient lighting	• Monochrome
Touch reading light	•

Driving functions

Navigation traffic information display	•
Lane assist	•
Lane Keeping Assist System	•
Cruise control system	• Full speed adaptive cruise
Satellite navigation system	•
Driving assistance level	•L2
Lane centering	•
Road traffic sign recognition	•
Map Brand	• Gaud
Parking Assist	-

Exterior lighting

Low beam light source	•LED
High beam light source	•LED
LED daytime running lights	•
Adaptive high and low beam	•
Automatic headlights	•

Exterior lighting (continued)

Height-adjustable headlights	<ul style="list-style-type: none">•
Headlight Delay Off	<ul style="list-style-type: none">•

Exterior mirrors

Exterior mirror function	<ul style="list-style-type: none">• Electric adjustment;• Electric folding;• Rearview mirror heating;• Automatic folding when locked
---------------------------------	---

Appearance/anti-theft

Rim material	<ul style="list-style-type: none">• Aluminum alloy
Electronic engine immobilizer	<ul style="list-style-type: none">•
Central locking system in the car	<ul style="list-style-type: none">•
Key Type	<ul style="list-style-type: none">• Remote key;• Bluetooth key
Keyless start system	<ul style="list-style-type: none">•
Keyless entry function	<ul style="list-style-type: none">• Driving position
Hands-free Trunk	<ul style="list-style-type: none">•
Remote start function	<ul style="list-style-type: none">•
Hidden electric door handle	<ul style="list-style-type: none">•

Skylight/Glass

Sunroof Type	<ul style="list-style-type: none">• Openable panoramic sunroof
Front/rear electric windows	Front •/Rear •
One-touch window lifting function	<ul style="list-style-type: none">• Full vehicle
Window anti-pinch function	<ul style="list-style-type: none">•
Car makeup mirror	<ul style="list-style-type: none">• Main driving position;• First officer
Rear wiper	-
Rain sensor wiper function	<ul style="list-style-type: none">• Speed induction type

Interior and exterior color

Exterior Color	Andean Grey #585B62 Yunshan Green #29474B titanium light silver gray #C6C6C6 glitter ice crystal white #FFFFFF Yao Dung Red #FF0303
-----------------------	---

Interior and exterior color (continued)

Interior Color	Elegant Black Yunshan Green #000000 #484F4F Elegant Black #000000
-----------------------	---

Steering wheel/interior mirror

Steering Wheel Material	• Cortex
Steering wheel position adjustment	• Manual up and down front and rear adjustment
Multi-function steering wheel	•
Heated Steering Wheel	-
Steering wheel memory	-
Trip computer display screen	• Color
Full LCD instrument panel	•
LCD instrument size	• 10.25 inches
Interior rearview mirror function	• Manual anti-glare
Gear shifting	• Electronic gear shift

Intelligent configuration

Connected Car Services	•
OTA Updates	•
4G/5G Network	•4G
Mobile APP remote function	• Door control Window control Vehicle start Climate control Vehicle Condition Query Diagnosis Vehicle positioning Find car Appointment maintenance Maintenance
Wi-Fi hotspots	•
Car KTV	○

Driving Control

Driving mode switch	• Sport; • Economy; • Standard/ Comfort
Automatic parking	•
Steep slope descent	•
Hill start assist	•
Engine start-stop technology	•

Driving Hardware

Front/rear parking radar	Front-/Rear •
---------------------------------	---------------

Driving Hardware (continued)

Driving Assistance Camera System	• 360-degree panoramic image
Front perception camera	• Monocular
Number of cameras	• 5
Number of ultrasonic radars	• 3
Transparent chassis/540-degree imaging	•
Millimeter wave radar quantity	• 3
Number of cameras in the car	• 2

In-car charging

Multimedia/charging port	• USB
Number of USB/Type-C ports	• 1 front row/1 back row
Mobile phone wireless charging function	• Front row

"●" = Standard equipment

"_" = Not available

"○" = Optional equipment.

Note: These are Chinese market vehicles. Warranty coverage is not available outside of China.