

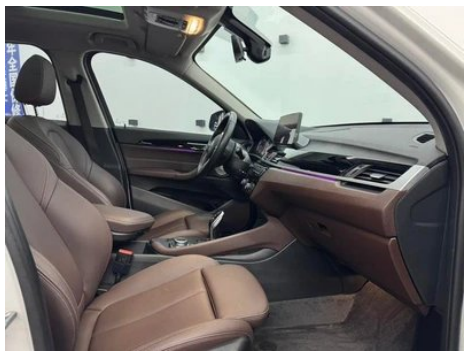
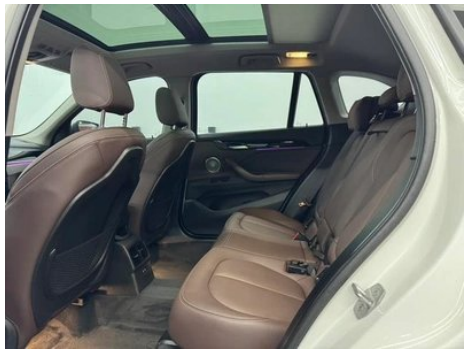
Vehicle Detail Report

BMW X1 2022 sDrive25Li Leading Type

Basic Information

| | |
|--------------------|------------|
| Brand | BMW |
| Mileage | 44,000 km |
| Color | White |
| First Registration | 2022-03-01 |
| Transfer Count | 1 |

Vehicle Images





Vehicle Condition

1. Left rear quarter panel, Scratch.

Configuration Information

Model Information

| | |
|--------------------|-------------------------------------|
| Model Name | BMW X1 2022 sDrive25Li Leading Type |
| Launch Date | 2021.12 |

Basic parameters

| | |
|-----------------------------|-------------|
| Vehicle Class | Compact SUV |
| Energy Type | Gasoline |
| Maximum Power (kW) | 141 |
| Maximum Torque (N·m) | 280 |

Basic parameters (continued)

| | |
|---|-------------------------|
| Transmission | 7-speed wet dual-clutch |
| Body Type | SUV |
| Engine | 2.0L 192 hp L4 |
| Dimensions (L×W×H) (mm) | 4565*1821*1620 |
| Official 0-100 km/h Acceleration (s) | 8.2 |
| Top Speed (km/h) | 220 |
| Curb Weight (kg) | 1588 |
| Maximum Gross Weight (kg) | 2060 |
| NEDC Combined Fuel Consumption (L/100km) | 6.2 |
| WLTP Combined Fuel Consumption (L/100km) | 7.2 |

engine

| | |
|--------------------------------|------------------|
| Engine Model | B48A20C |
| Displacement (mL) | 1998 |
| Displacement (L) | 2.0 |
| Induction Type | Turbocharging |
| Cylinder Arrangement | L |
| Number of Cylinders | 4 |
| Valves per Cylinder | 4 |
| Valve Train | DOHC |
| Maximum Power (PS) | 192 |
| Max Power Speed (rpm) | 5000-6000 |
| Max Torque Speed (rpm) | 1350-4600 |
| Maximum net power (kW) | 141 |
| Fuel Grade | 95. |
| Fuel Delivery System | Direct injection |
| Cylinder Head Material | Aluminum alloy |
| Cylinder Block Material | Aluminum alloy |
| Engine layout | Horizontal |

Screen/System

| | |
|-------------------------------------|--|
| Central control color screen | <ul style="list-style-type: none">• Touch LCD screen |
|-------------------------------------|--|

Screen/System (continued)

| | |
|---|--------------------------------------|
| Infotainment Screen Size | • 10.25 inches |
| Bluetooth/In-car Phone | • |
| Smartphone Integration/Mirroring | • Support CarPlay; • Support CarLife |
| Voice recognition control system | • Multimedia system; • Telephone |
| In-vehicle intelligent system | •iDrive |

Body

| | |
|-------------------------------|------------|
| Length (mm) | 4565 |
| Width (mm) | 1821 |
| Height (mm) | 1620 |
| Wheelbase (mm) | 2780 |
| Front Track (mm) | 1563 |
| Rear Track (mm) | 1564 |
| Door Opening Type | swing door |
| Number of Doors | 5 |
| Number of Seats | 5 |
| Fuel Tank Capacity (L) | 61 |
| Trunk volume (L) | 505-1650 |
| Drag Coefficient (Cd) | - |
| Approach Angle (°) | 18 |
| Departure Angle (°) | 21 |

Gearbox

| | |
|--------------------------|------------------------------------|
| Abbreviation | 7-speed wet dual-clutch |
| Number of Gears | 7 |
| Transmission Type | Wet Dual-Clutch Transmission (DCT) |

Chassis steering

| | |
|------------------------------|--------------------------------------|
| Drive Type | Front-engine, Front-wheel drive (FF) |
| Front Suspension Type | MacPherson independent suspension |
| Rear Suspension Type | Multi-link independent suspension |
| Power Steering Type | Electric power assistance |
| Vehicle structure | bearing type |

Seat Configuration

| | |
|----------------------|---------------------|
| Seat Material | • Imitation leather |
|----------------------|---------------------|

Seat Configuration (continued)

| | |
|--|---|
| Main seat adjustment | <ul style="list-style-type: none">• Front and rear adjustment;• Backrest adjustment;• Height adjustment (4-way);• Leg support adjustment |
| Co-seat adjustment method | <ul style="list-style-type: none">• Front and rear adjustment;• Backrest adjustment;• Height adjustment (4-way);• Leg support adjustment |
| Electric adjustment of driver's seat and passenger seat | Main •/Deputy • |
| Front seat functions | ○ Heating (USD 441) |
| Electric seat memory function | <ul style="list-style-type: none">• Driving position |
| Front passenger seat rear adjustable buttons | - |
| Second row seat adjustment | <ul style="list-style-type: none">• Front and rear adjustment;• Backrest adjustment |
| Rear seat folding | <ul style="list-style-type: none">• Proportional down |
| Front/rear center armrest | Front •/Rear • |
| Rear cup holder | <ul style="list-style-type: none">• |
| Sports style seats | <ul style="list-style-type: none">• |

Active safety

| | |
|---|---|
| Anti-lock Braking System (ABS) | <ul style="list-style-type: none">• |
| Electronic Brakeforce Distribution (EBD/CBC) | <ul style="list-style-type: none">• |
| Brake Assist System (EBA/BAS/BA) | <ul style="list-style-type: none">• |
| Traction Control System (ASR/TCS/TRC) | <ul style="list-style-type: none">• |
| Electronic Stability Control (ESC/ESP/DSC) | <ul style="list-style-type: none">• |
| Tire Pressure Monitoring System (TPMS) | <ul style="list-style-type: none">• Tire pressure display |
| Seat Belt Reminder | <ul style="list-style-type: none">• Front row |
| ISOFIX Child Seat Anchors | <ul style="list-style-type: none">• |
| Lane Departure Warning System (LDWS) | - |
| Autonomous Emergency Braking (AEB) | - |

Active safety (continued)

| | |
|--------------------------------------|---|
| Driver Fatigue Detection | - |
| Emergency Call System (eCall) | • |

Air conditioning/refrigerator

| | |
|--|------------------------------|
| Air conditioning temperature control method | • Automatic air conditioning |
| Rear Independent Climate Control | - |
| Rear seat air vents | • |
| Temperature zone control | • |
| Car air purifier | - |
| In-cabin PM2.5 Filter | - |

Passive safety

| | |
|--|-----------------|
| Driver/passenger airbag | Main •/Deputy • |
| Front/rear side airbags | Front •/Rear- |
| Front/rear head airbags (curtain airbags) | Front •/Rear • |
| Run-flat tires | • |

Wheel brake

| | |
|---------------------------|--------------------|
| Front Brake Type | Ventilation disc |
| Rear Brake Type | Disc |
| Parking brake type | Electronic Parking |
| Front Tire Size | 225/50 R18 |
| Rear Tire Size | 225/50 R18 |
| Spare Tire Size | None |

Audio/Interior Lighting

| | |
|----------------------------------|---|
| Speaker Brand Name | ○ Harman/Kardon Harman Kardon (USD 956) |
| Number of speakers | • 7 horn; ○ 12 horn |
| Interior ambient lighting | • 6 colors |

Driving functions

| | |
|---|---|
| Navigation traffic information display | - |
| Lane assist | - |
| Lane Keeping Assist System | - |

Driving functions (continued)

| | |
|------------------------------------|--|
| Cruise control system | <ul style="list-style-type: none">• Cruise control |
| Satellite navigation system | - |
| Parking Assist | - |

Exterior lighting

| | |
|-------------------------------------|---|
| Low beam light source | <ul style="list-style-type: none">• LED |
| High beam light source | <ul style="list-style-type: none">• LED |
| LED daytime running lights | <ul style="list-style-type: none">• |
| Adaptive high and low beam | - |
| Automatic headlights | <ul style="list-style-type: none">• |
| Height-adjustable headlights | <ul style="list-style-type: none">• |
| Headlight Delay Off | <ul style="list-style-type: none">• |

Exterior mirrors

| | |
|---------------------------------|---|
| Exterior mirror function | <ul style="list-style-type: none">• Electric adjustment;• Electric folding;• Rearview mirror memory;• Rearview mirror heating;• Automatically turn down when reversing;• Automatically fold when locking the car |
|---------------------------------|---|

Appearance/anti-theft

| | |
|--|--|
| Rim material | <ul style="list-style-type: none">• Aluminum alloy |
| Electric trunk | <ul style="list-style-type: none">• |
| Electronic engine immobilizer | <ul style="list-style-type: none">• |
| Central locking system in the car | <ul style="list-style-type: none">• |
| Key Type | <ul style="list-style-type: none">• Remote key |
| Keyless start system | <ul style="list-style-type: none">• |
| Keyless entry function | <ul style="list-style-type: none">• Front row |
| Hands-free Trunk | <ul style="list-style-type: none">• |
| Electric trunk position memory | <ul style="list-style-type: none">• |
| Roof rack | <ul style="list-style-type: none">• |

Skylight/Glass

| | |
|---------------------|--|
| Sunroof Type | <ul style="list-style-type: none">• Openable panoramic sunroof |
|---------------------|--|

Skylight/Glass (continued)

| | |
|--|---|
| Front/rear electric windows | Front •/Rear • |
| One-touch window lifting function | • Full car |
| Window anti-pinch function | • |
| Car makeup mirror | • Main driver's lamp; • co-pilot's lamp |
| Rear wiper | • |
| Rain sensor wiper function | • Rainfall-sensing |

Interior and exterior color

| | |
|-----------------------|--|
| Exterior Color | Mysterious gray:#262626; Quantum blue:#273F7C; Fragrant red:#810B17; Cashmi silver:#C6C1B4; Ore white:#E7E7E7; Starlight brown:#28160F |
| Interior Color | Black/mocha:#000000/#423534; Black:#000000 |

Steering wheel/interior mirror

| | |
|---|--|
| Steering Wheel Material | • Leather |
| Steering wheel position adjustment | • Manual up and down front and rear adjustment |
| Multi-function steering wheel | • |
| Heated Steering Wheel | - |
| Steering wheel memory | - |
| Trip computer display screen | • Color |
| Full LCD instrument panel | - |
| Interior rearview mirror function | • Manual anti-glare |
| Gear shifting | • Electronic gear shift |

Intelligent configuration

| | |
|-------------------------------|-----|
| Connected Car Services | • |
| OTA Updates | - |
| 4G/5G Network | •4G |

Driving Control

Driving Control (continued)

| | |
|-------------------------------------|---|
| Driving mode switch | • Sport; • Economy; • Standard/Comfort; • Customization/Personalization |
| Automatic parking | - |
| Hill start assist | • |
| Energy recovery system | • |
| Engine start-stop technology | • |

Driving Hardware

| | |
|---|-------------------|
| Front/rear parking radar | Front •/Rear • |
| Driving Assistance Camera System | • Reversing image |

In-car charging

| | |
|-----------------------------------|--|
| Multimedia/charging port | •USB;•Type-C |
| Number of USB/Type-C ports | • 2 in the front row/2 in the back row |

"●" = Standard equipment

"-" = Not available

"○" = Optional equipment.

Note: These are Chinese market vehicles. Warranty coverage is not available outside of China.