

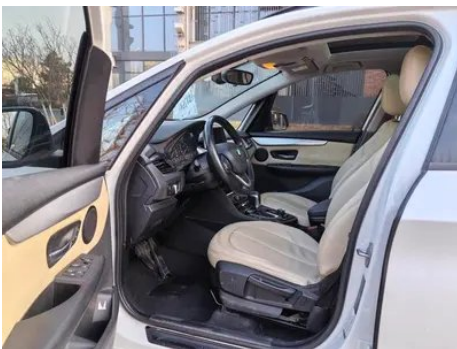
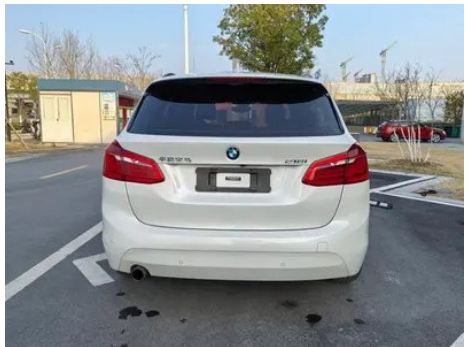
Vehicle Detail Report

BMW 2 Series Touring 2016 218i Fashionable

Basic Information

Brand	BMW
Mileage	157,000 km
Color	White
First Registration	2017-07-01
Transfer Count	0

Vehicle Images





Vehicle Condition

1. Airbag, Replaced.

Configuration Information

Model Information

Model Name	BMW 2 Series Touring 2016 218i Fashionable
Launch Date	2016.03

Basic parameters

Vehicle Class	compact car
Energy Type	Gasoline
Maximum Power (kW)	100
Maximum Torque (N·m)	220
Transmission	6-speed manual integration
Body Type	Hatchback
Engine	1.5L 136 hp L3
Dimensions (L×W×H) (mm)	4342*1800*1600
Official 0-100 km/h Acceleration (s)	9.4
Top Speed (km/h)	205
Curb Weight (kg)	-
Maximum Gross Weight (kg)	-
NEDC Combined Fuel Consumption (L/100km)	5.9

engine

Engine Model	-
Displacement (mL)	1499
Displacement (L)	1.5
Induction Type	Turbocharging
Cylinder Arrangement	L

engine (continued)

Number of Cylinders	3
Valves per Cylinder	4
Valve Train	DOHC
Bore (mm)	82
Stroke (mm)	94.6
Maximum Power (PS)	136
Max Power Speed (rpm)	4400
Max Torque Speed (rpm)	1250-4300
Maximum net power (kW)	-
Fuel Grade	95.
Fuel Delivery System	Direct injection
Cylinder Head Material	Aluminum alloy
Cylinder Block Material	Aluminum alloy

Screen/System

Central control color screen	<ul style="list-style-type: none">•
Infotainment Screen Size	•6.5 inches
Bluetooth/In-car Phone	<ul style="list-style-type: none">•

Body

Length (mm)	4342
Width (mm)	1800
Height (mm)	1600
Wheelbase (mm)	2670
Front Track (mm)	1561
Rear Track (mm)	1562
Door Opening Type	-
Number of Doors	5
Number of Seats	5
Fuel Tank Capacity (L)	61
Trunk volume (L)	-
Drag Coefficient (Cd)	-

Gearbox

Abbreviation	6-speed manual integration
Number of Gears	6

Gearbox (continued)

Transmission Type	Automatic Transmission with Manual Mode (AT)
--------------------------	--

Chassis steering

Drive Type	Front-engine, Front-wheel drive (FF)
Front Suspension Type	MacPherson independent suspension
Rear Suspension Type	Multi-link independent suspension
Power Steering Type	Electric power assistance
Vehicle structure	bearing type

Seat Configuration

Seat Material	• Fabric Faux leather (3200 yuan)
Main seat adjustment	• Front and rear adjustment; • Backrest adjustment; • Height adjustment (2-way);○ Height adjustment (4-way)
Co-seat adjustment method	• Front and rear adjustment; • Backrest adjustment
Electric adjustment of driver's seat and passenger seat	-
Front seat functions	○ Heating (USD 441)
Front passenger seat rear adjustable buttons	-
Second row seat adjustment	• Front and rear adjustment; • Backrest adjustment
Rear seat folding	• Proportional down
Front/rear center armrest	Front •/Rear •
Rear cup holder	•

Active safety

Anti-lock Braking System (ABS)	•
Electronic Brakeforce Distribution (EBD/CBC)	•
Brake Assist System (EBA/BAS/BA)	•
Traction Control System (ASR/TCS/TRC)	•
Electronic Stability Control (ESC/ESP/DSC)	•
Tire Pressure Monitoring System (TPMS)	•

Active safety (continued)

Seat Belt Reminder	•
ISOFIX Child Seat Anchors	•
Lane Departure Warning System (LDWS)	-
Autonomous Emergency Braking (AEB)	-
Driver Fatigue Detection	-

Air conditioning/refrigerator

Air conditioning temperature control method	• Manual air conditioning
Rear Independent Climate Control	-
Rear seat air vents	-
Temperature zone control	-
Car air purifier	-
In-cabin PM2.5 Filter	-

Passive safety

Driver/passenger airbag	Main •/Deputy •
Front/rear side airbags	Front •/Rear-
Front/rear head airbags (curtain airbags)	Front •/Rear •
Run-flat tires	•

Wheel brake

Front Brake Type	Ventilation disc
Rear Brake Type	Disc
Parking brake type	Electronic Parking
Front Tire Size	205/60 R16
Rear Tire Size	205/60 R16
Spare Tire Size	None

Audio/Interior Lighting

Number of speakers	•6-7 speakers; ○8-9 speakers
--------------------	------------------------------

Driving functions

Navigation traffic information display	-
Lane assist	-

Driving functions (continued)

Lane Keeping Assist System	-
Satellite navigation system	-
Parking Assist	○

Exterior lighting

Low beam light source	• Halogen
High beam light source	• Halogen
LED daytime running lights	-
Adaptive high and low beam	-
Automatic headlights	•
Front fog lights	•
Height-adjustable headlights	•
Headlight Delay Off	-

Exterior mirrors

Exterior mirror function	• Electric adjustment; ○ Electric folding; • Rearview mirror heating; ○ Automatic anti-glare
---------------------------------	--

Appearance/anti-theft

Rim material	• Aluminum alloy
Electric trunk	○
Electronic engine immobilizer	•
Central locking system in the car	•
Key Type	• Remote key
Keyless start system	•
Keyless entry function	○
Roof rack	•

Skylight/Glass

Sunroof Type	• Panoramic sunroof
Front/rear electric windows	Front •/Rear •
One-touch window lifting function	• Full vehicle

Skylight/Glass (continued)

Window anti-pinch function	•
Car makeup mirror	•
Rear wiper	•
Rain sensor wiper function	•

Interior and exterior color

Exterior Color	Ore White #E7E7E7 Valencia Orange #FF660E Gem Green #020202 Platinum Silver #605F57 Mediterranean blue #092A57 Havana Ash #48413B cashmi silver #C6C1B4 chestnut copper brown #8A411B Melbourne Red #610303 Starlight Brown #28160F Snow Mountain White #FAFAFA
Interior Color	Black #000000 Ink gray #1F1F1F Black Canberra beige #000000 #EEDDC4

Steering wheel/interior mirror

Steering Wheel Material	• Cortex
Steering wheel position adjustment	• Manual up and down front and rear adjustment
Multi-function steering wheel	•
Heated Steering Wheel	-
Steering wheel memory	-
Trip computer display screen	•
Full LCD instrument panel	-
Interior rearview mirror function	○ Automatic anti-glare

Intelligent configuration

Connected Car Services	-
OTA Updates	-

Driving Control

Automatic parking	-
Engine start-stop technology	•

Driving Hardware

Front/rear parking radar	Front ○/Rear •
---------------------------------	----------------

Driving Hardware (continued)

Driving Assistance Camera System	○ Reversing image
---	-------------------

In-car charging

Multimedia/charging port	•USB;•AUX
---------------------------------	-----------

Optional Package

Optional Package	Automatic parking assist component (USD 456; includes: front and rear parking distance warning system, automatic parking assist system)
-------------------------	---

"●" = Standard equipment

"_" = Not available

"○" = Optional equipment.

Note: These are Chinese market vehicles. Warranty coverage is not available outside of China.