

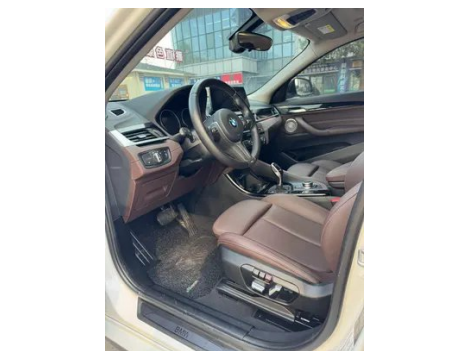
Vehicle Detail Report

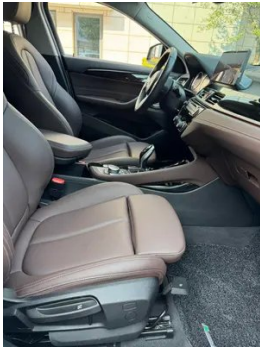
BMW X2 2021 Restyling sDrive25i M Sports suit

Basic Information

| | |
|--------------------|-------------------|
| Brand | BMW |
| Mileage | 33,000 km |
| Color | White |
| First Registration | 2021-08-01 |
| Transfer Count | 0 |

Vehicle Images





Vehicle Condition

1. Original metal body panels with factory paint.

Configuration Information

Model Information

| | |
|--------------------|---|
| Model Name | BMW X2 2021 Restyling sDrive25i M Sports suit |
| Launch Date | 2021.07 |

Basic parameters

| | |
|---|-------------------------|
| Vehicle Class | Compact SUV |
| Energy Type | Gasoline |
| Maximum Power (kW) | 141 |
| Maximum Torque (N·m) | 280 |
| Transmission | 7-speed wet dual-clutch |
| Body Type | SUV |
| Engine | 2.0L 192 hp L4 |
| Dimensions (L×W×H) (mm) | 4379*1824*1555 |
| Official 0-100 km/h Acceleration (s) | 7.7 |
| Top Speed (km/h) | 227 |
| Curb Weight (kg) | 1557 |
| Maximum Gross Weight (kg) | 2055 |
| NEDC Combined Fuel Consumption (L/100km) | 6.2 |

engine

| | |
|--------------------------------|------------------|
| Engine Model | B48A20C |
| Displacement (mL) | 1998 |
| Displacement (L) | 2.0 |
| Induction Type | Turbocharging |
| Cylinder Arrangement | L |
| Number of Cylinders | 4 |
| Valves per Cylinder | 4 |
| Valve Train | DOHC |
| Maximum Power (PS) | 192 |
| Max Power Speed (rpm) | 5000-6000 |
| Max Torque Speed (rpm) | 1350-4600 |
| Maximum net power (kW) | 141 |
| Fuel Grade | 95. |
| Fuel Delivery System | Direct injection |
| Cylinder Head Material | Aluminum alloy |
| Cylinder Block Material | Aluminum alloy |
| Engine layout | Horizontal |

Screen/System

| | |
|--|--|
| Central control color screen | <ul style="list-style-type: none">• Touch LCD screen |
| Infotainment Screen Size | <ul style="list-style-type: none">• 10.25 inches |
| Bluetooth/In-car Phone | <ul style="list-style-type: none">• |
| Smartphone Integration/ Mirroring | <ul style="list-style-type: none">• Apple CarPlay support;• Baidu CarLife support |
| Voice recognition control system | <ul style="list-style-type: none">• Multimedia system;• Telephone |
| In-vehicle intelligent system | <ul style="list-style-type: none">• iDrive |

Body

| | |
|-------------------------|------|
| Length (mm) | 4379 |
| Width (mm) | 1824 |
| Height (mm) | 1555 |
| Wheelbase (mm) | 2670 |
| Front Track (mm) | 1565 |
| Rear Track (mm) | 1564 |

Body (continued)

| | |
|-------------------------------|------------|
| Door Opening Type | swing door |
| Number of Doors | 5 |
| Number of Seats | 5 |
| Fuel Tank Capacity (L) | 61 |
| Trunk volume (L) | - |
| Drag Coefficient (Cd) | - |
| Approach Angle (°) | 16 |
| Departure Angle (°) | 24 |

Gearbox

| | |
|--------------------------|------------------------------------|
| Abbreviation | 7-speed wet dual-clutch |
| Number of Gears | 7 |
| Transmission Type | Wet Dual-Clutch Transmission (DCT) |

Chassis steering

| | |
|------------------------------|--------------------------------------|
| Drive Type | Front-engine, Front-wheel drive (FF) |
| Front Suspension Type | MacPherson independent suspension |
| Rear Suspension Type | Multi-link independent suspension |
| Power Steering Type | Electric power assistance |
| Vehicle structure | bearing type |

Seat Configuration

| | |
|--|---|
| Seat Material | <ul style="list-style-type: none">• Imitation leather |
| Main seat adjustment | <ul style="list-style-type: none">• Front and rear adjustment;• Backrest adjustment;• Height adjustment (4-way);• Leg support adjustment |
| Co-seat adjustment method | <ul style="list-style-type: none">• Front and rear adjustment;• Backrest adjustment;• Height adjustment (4-way);• Leg support adjustment |
| Electric adjustment of driver's seat and passenger seat | Main <input checked="" type="checkbox"/> /Auxiliary <input type="checkbox"/> Driver's seat electric adjustment (USD 515) |
| Front seat functions | <input type="checkbox"/> Heating (USD 441) |
| Electric seat memory function | <ul style="list-style-type: none">• Driving position |
| Front passenger seat rear adjustable buttons | - |
| Second row seat adjustment | <ul style="list-style-type: none">• Backrest adjustment |

Seat Configuration (continued)

| | |
|----------------------------------|---------------------|
| Rear seat folding | • Proportional down |
| Front/rear center armrest | Front •/Rear • |
| Rear cup holder | • |

Active safety

| | |
|---|-------------------------|
| Anti-lock Braking System (ABS) | • |
| Electronic Brakeforce Distribution (EBD/CBC) | • |
| Brake Assist System (EBA/BAS/BA) | • |
| Traction Control System (ASR/TCS/TRC) | • |
| Electronic Stability Control (ESC/ESP/DSC) | • |
| Tire Pressure Monitoring System (TPMS) | • Tire pressure display |
| Seat Belt Reminder | • Full vehicle |
| ISOFIX Child Seat Anchors | • |
| Lane Departure Warning System (LDWS) | - |
| Autonomous Emergency Braking (AEB) | - |
| Driver Fatigue Detection | - |
| Emergency Call System (eCall) | • |

Air conditioning/refrigerator

| | |
|--|------------------------------|
| Air conditioning temperature control method | • Automatic air conditioning |
| Rear Independent Climate Control | - |
| Rear seat air vents | • |
| Temperature zone control | • |
| Car air purifier | - |
| In-cabin PM2.5 Filter | - |

Passive safety

| | |
|--------------------------------|-----------------|
| Driver/passenger airbag | Main •/Deputy • |
| Front/rear side airbags | Front •/Rear- |

Passive safety (continued)

| | |
|--|----------------|
| Front/rear head airbags (curtain airbags) | Front •/Rear • |
| Run-flat tires | • |

Wheel brake

| | |
|---------------------------|--------------------|
| Front Brake Type | Ventilation disc |
| Rear Brake Type | Ventilation disc |
| Parking brake type | Electronic Parking |
| Front Tire Size | 225/50 R18 |
| Rear Tire Size | 225/50 R18 |
| Spare Tire Size | None |

Audio/Interior Lighting

| | |
|----------------------------------|--------------|
| Number of speakers | • 7 speakers |
| Interior ambient lighting | • 6 colors |

Driving functions

| | |
|---|---------------------------|
| Navigation traffic information display | - |
| Lane assist | - |
| Lane Keeping Assist System | - |
| Cruise control system | ○Cruise Control (USD 368) |
| Satellite navigation system | - |
| Parking Assist | - |

Exterior lighting

| | |
|-------------------------------------|------|
| Low beam light source | •LED |
| High beam light source | •LED |
| LED daytime running lights | • |
| Adaptive high and low beam | - |
| Automatic headlights | • |
| Height-adjustable headlights | • |
| Headlight Delay Off | • |

Exterior mirrors

Exterior mirrors (continued)

| | |
|---------------------------------|---|
| Exterior mirror function | <ul style="list-style-type: none">• Electric adjustment;• Electric folding;• Rearview mirror memory;• Rearview mirror heating;• Automatically turn down when reversing;• Automatically fold when locking the car |
|---------------------------------|---|

Appearance/anti-theft

| | |
|--|--|
| Rim material | <ul style="list-style-type: none">• Aluminum alloy |
| Electric trunk | <ul style="list-style-type: none">• |
| Electronic engine immobilizer | <ul style="list-style-type: none">• |
| Central locking system in the car | <ul style="list-style-type: none">• |
| Key Type | <ul style="list-style-type: none">• Remote key |
| Keyless start system | <ul style="list-style-type: none">• |
| Keyless entry function | <input type="radio"/> Front row (USD 515) |
| Appearance Kit | <ul style="list-style-type: none">• Sports style |
| Electric trunk position memory | <ul style="list-style-type: none">• |

Skylight/Glass

| | |
|--|---|
| Sunroof Type | <ul style="list-style-type: none">• Openable panoramic sunroof |
| Front/rear electric windows | Front <input type="checkbox"/> /Rear <input type="checkbox"/> |
| One-touch window lifting function | <ul style="list-style-type: none">• Full vehicle |
| Window anti-pinch function | <ul style="list-style-type: none">• |
| Car makeup mirror | <ul style="list-style-type: none">• Main driver's lamp;• co-pilot's lamp |
| Rear wiper | <ul style="list-style-type: none">• |
| Rain sensor wiper function | <ul style="list-style-type: none">• Rainfall-sensing |

Interior and exterior color

| | |
|-----------------------|---|
| Exterior Color | Quantum Blue #273F7C Mysterious Gray #262626 Ore White #E7E7E7 Sunset orange #DE4A29 sky blue #0078B5 obsidian gold #E8D161 |
| Interior Color | Black/Mocha:#000000/#423534; Black:#000000; Black/Lava Red:#000000/#AF3A21 |

Steering wheel/interior mirror

Steering wheel/interior mirror (continued)

| | |
|---|--|
| Steering Wheel Material | • Leather |
| Steering wheel position adjustment | • Manual up and down front and rear adjustment |
| Multi-function steering wheel | • |
| Heated Steering Wheel | - |
| Steering wheel memory | - |
| Trip computer display screen | • Color |
| Full LCD instrument panel | - |
| Interior rearview mirror function | • Manual anti-glare |
| Gear shifting | • Electronic gear shift |

Intelligent configuration

| | |
|-------------------------------|---|
| Connected Car Services | - |
| OTA Updates | - |

Driving Control

| | |
|-------------------------------------|--|
| Driving mode switch | • Sport; • Economy; • Standard/Comfort |
| Automatic parking | - |
| Hill start assist | • |
| Energy recovery system | • |
| Engine start-stop technology | • |

Driving Hardware

| | |
|---|-------------------|
| Front/rear parking radar | Front •/Rear • |
| Driving Assistance Camera System | • Reversing image |

In-car charging

| | |
|-----------------------------------|--|
| Multimedia/charging port | •USB;•Type-C |
| Number of USB/Type-C ports | • 2 in the front row/2 in the back row |

"●" = Standard equipment

"□" = Not available

"○" = Optional equipment.

Note: These are Chinese market vehicles. Warranty coverage is not available outside of China.