

# Vehicle Detail Report

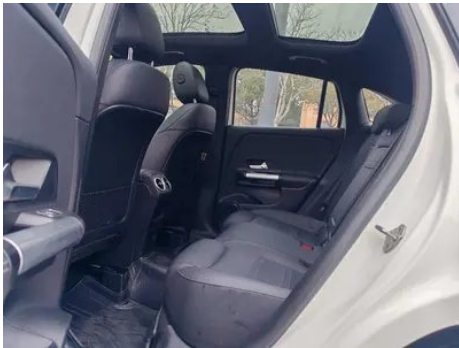
## Mercedes-Benz GLA 2022 Restyling GLA 200

### Basic Information

Brand	Mercedes-Benz
Mileage	72,000 km
Color	White
First Registration	2022-01-01
Transfer Count	1

### Vehicle Images







## Vehicle Condition

1. Spare wheel well, Soiling. 2. Front passenger seat rails and frame, Signs of removal. 3. Left rear quarter panel, Deformation. 4. Right rear quarter panel, Deformation.

## Configuration Information

### Model Information

<b>Model Name</b>	Mercedes-Benz GLA 2022 Restyling GLA 200
<b>Launch Date</b>	2021.12

### Basic parameters

<b>Vehicle Class</b>	Compact SUV
<b>Energy Type</b>	Gasoline
<b>Maximum Power (kW)</b>	120
<b>Maximum Torque (N·m)</b>	250
<b>Transmission</b>	7-speed wet dual-clutch
<b>Body Type</b>	SUV
<b>Engine</b>	1.3T 163 horsepower L4
<b>Dimensions (L×W×H) (mm)</b>	4427*1834*1610
<b>Official 0-100 km/h Acceleration (s)</b>	9
<b>Top Speed (km/h)</b>	207
<b>Curb Weight (kg)</b>	1546
<b>Maximum Gross Weight (kg)</b>	-
<b>WLTP Combined Fuel Consumption (L/100km)</b>	6.78

### engine

<b>Engine Model</b>	282 914
<b>Displacement (mL)</b>	1332
<b>Displacement (L)</b>	1.3
<b>Induction Type</b>	Turbocharging

## engine (continued)

<b>Cylinder Arrangement</b>	L
<b>Number of Cylinders</b>	4
<b>Valves per Cylinder</b>	4
<b>Valve Train</b>	DOHC
<b>Maximum Power (PS)</b>	163
<b>Max Power Speed (rpm)</b>	5500
<b>Max Torque Speed (rpm)</b>	1620-4000
<b>Maximum net power (kW)</b>	120
<b>Fuel Grade</b>	95.
<b>Fuel Delivery System</b>	Direct injection
<b>Cylinder Head Material</b>	Aluminum alloy
<b>Cylinder Block Material</b>	Aluminum alloy
<b>Engine layout</b>	Horizontal

## Screen/System

<b>Central control color screen</b>	<ul style="list-style-type: none"><li>• Touch LCD screen</li></ul>
<b>Infotainment Screen Size</b>	<ul style="list-style-type: none"><li>• 10.25 inches</li></ul>
<b>Bluetooth/In-car Phone</b>	<ul style="list-style-type: none"><li>•</li></ul>
<b>Smartphone Integration/ Mirroring</b>	<ul style="list-style-type: none"><li>• Support CarPlay;</li><li>• Support CarLife</li></ul>
<b>Voice recognition control system</b>	<ul style="list-style-type: none"><li>• Multimedia system;</li><li>• Navigation;</li><li>• Telephone;</li><li>• Air conditioning</li></ul>
<b>In-vehicle intelligent system</b>	<ul style="list-style-type: none"><li>• MBUX</li></ul>

## Body

<b>Length (mm)</b>	4427
<b>Width (mm)</b>	1834
<b>Height (mm)</b>	1610
<b>Wheelbase (mm)</b>	2729
<b>Front Track (mm)</b>	1590
<b>Rear Track (mm)</b>	1592
<b>Door Opening Type</b>	swing door
<b>Number of Doors</b>	5
<b>Number of Seats</b>	5
<b>Trunk volume (L)</b>	-

## Body (continued)

<b>Drag Coefficient (Cd)</b>	-
<b>Approach Angle (°)</b>	19
<b>Departure Angle (°)</b>	29

## Gearbox

<b>Abbreviation</b>	7-speed wet dual-clutch
<b>Number of Gears</b>	7
<b>Transmission Type</b>	Wet Dual-Clutch Transmission (DCT)

## Chassis steering

<b>Drive Type</b>	Front-engine, Front-wheel drive (FF)
<b>Front Suspension Type</b>	MacPherson independent suspension
<b>Rear Suspension Type</b>	Multi-link independent suspension
<b>Power Steering Type</b>	Electric power assistance
<b>Vehicle structure</b>	bearing type

## Seat Configuration

<b>Seat Material</b>	<ul style="list-style-type: none"><li>• Imitation leather</li></ul>
<b>Main seat adjustment</b>	<ul style="list-style-type: none"><li>• Front-to-back adjustment;</li><li>• Backrest adjustment;</li><li>• Height adjustment (4-way);</li><li>• Leg rest adjustment;</li><li>○ Lumbar support (4-way)</li></ul>
<b>Co-seat adjustment method</b>	<ul style="list-style-type: none"><li>• Front-to-back adjustment;</li><li>• Backrest adjustment;</li><li>• Height adjustment (4-way);</li><li>• Leg rest adjustment;</li><li>○ Lumbar support (4-way)</li></ul>
<b>Electric adjustment of driver's seat and passenger seat</b>	Main ○/Secondary ○
<b>Front seat functions</b>	○ Heating (USD 382)
<b>Front passenger seat rear adjustable buttons</b>	-
<b>Rear seat folding</b>	<ul style="list-style-type: none"><li>• Proportional down</li></ul>
<b>Front/rear center armrest</b>	Front •/Rear •
<b>Rear cup holder</b>	<ul style="list-style-type: none"><li>•</li></ul>
<b>Sports style seats</b>	<ul style="list-style-type: none"><li>•</li></ul>

## Active safety

<b>Anti-lock Braking System (ABS)</b>	<ul style="list-style-type: none"><li>•</li></ul>
---------------------------------------	---------------------------------------------------

## Active safety (continued)

<b>Electronic Brakeforce Distribution (EBD/CBC)</b>	•
<b>Brake Assist System (EBA/BAS/BA)</b>	•
<b>Traction Control System (ASR/TCS/TRC)</b>	•
<b>Electronic Stability Control (ESC/ESP/DSC)</b>	•
<b>Tire Pressure Monitoring System (TPMS)</b>	• Tire pressure display
<b>Seat Belt Reminder</b>	• Full car
<b>ISOFIX Child Seat Anchors</b>	•
<b>Lane Departure Warning System (LDWS)</b>	•
<b>Autonomous Emergency Braking (AEB)</b>	•
<b>Driver Fatigue Detection</b>	•
<b>Emergency Call System (eCall)</b>	•

## Air conditioning/refrigerator

<b>Air conditioning temperature control method</b>	• Automatic air conditioning
<b>Rear Independent Climate Control</b>	-
<b>Rear seat air vents</b>	•
<b>Temperature zone control</b>	-
<b>Car air purifier</b>	-
<b>In-cabin PM2.5 Filter</b>	-

## Passive safety

<b>Driver/passenger airbag</b>	Main •/Deputy •
<b>Front/rear side airbags</b>	Front/rear rear side airbag (USD 500)
<b>Front/rear head airbags (curtain airbags)</b>	Front •/Rear •
<b>Knee airbag</b>	• Main driver knee airbag

## Wheel brake

<b>Front Brake Type</b>	Ventilation disc
<b>Rear Brake Type</b>	Disc

## Wheel brake (continued)

<b>Parking brake type</b>	Electronic Parking
<b>Front Tire Size</b>	235/55 R18
<b>Rear Tire Size</b>	235/55 R18
<b>Spare Tire Size</b>	None

## Audio/Interior Lighting

<b>Number of speakers</b>	• 6-7 Horns
<b>Interior ambient lighting</b>	• 64 colors

## Driving functions

<b>Navigation traffic information display</b>	•
<b>Lane assist</b>	-
<b>Lane Keeping Assist System</b>	•
<b>Cruise control system</b>	• Cruise control
<b>Satellite navigation system</b>	•
<b>Road traffic sign recognition</b>	•
<b>Parking Assist</b>	•

## Exterior lighting

<b>Low beam light source</b>	•LED
<b>High beam light source</b>	•LED
<b>LED daytime running lights</b>	•
<b>Adaptive high and low beam</b>	-
<b>Automatic headlights</b>	•
<b>Front fog lights</b>	•LED
<b>Height-adjustable headlights</b>	•
<b>Headlight Delay Off</b>	•

## Exterior mirrors

<b>Exterior mirror function</b>	•Electric adjustment; •Electric folding; •Rearview mirror heating; •Automatically turn down when reversing; •Automatically fold when locking the car
---------------------------------	------------------------------------------------------------------------------------------------------------------------------------------------------

## Appearance/anti-theft

<b>Rim material</b>	• Aluminum alloy
---------------------	------------------

## Appearance/anti-theft (continued)

<b>Electric trunk</b>	<ul style="list-style-type: none"><li>•</li></ul>
<b>Electronic engine immobilizer</b>	<ul style="list-style-type: none"><li>•</li></ul>
<b>Central locking system in the car</b>	<ul style="list-style-type: none"><li>•</li></ul>
<b>Key Type</b>	<ul style="list-style-type: none"><li>• Remote key</li></ul>
<b>Keyless start system</b>	<ul style="list-style-type: none"><li>•</li></ul>
<b>Electric trunk position memory</b>	<ul style="list-style-type: none"><li>•</li></ul>
<b>Roof rack</b>	<ul style="list-style-type: none"><li>•</li></ul>

## Skylight/Glass

<b>Sunroof Type</b>	<ul style="list-style-type: none"><li>• Sectional electric sunroof</li></ul>
<b>Front/rear electric windows</b>	Front •/Rear •
<b>One-touch window lifting function</b>	<ul style="list-style-type: none"><li>• Full car</li></ul>
<b>Window anti-pinch function</b>	<ul style="list-style-type: none"><li>•</li></ul>
<b>Car makeup mirror</b>	<ul style="list-style-type: none"><li>• Main driver's lamp; • co-pilot's lamp</li></ul>
<b>Rear wiper</b>	<ul style="list-style-type: none"><li>•</li></ul>
<b>Rain sensor wiper function</b>	<ul style="list-style-type: none"><li>• Rainfall-sensing</li></ul>

## Interior and exterior color

<b>Exterior Color</b>	Hao Shayin:#D7DCDC; Cosmic black:#13120E; Rose gravel gold:#A1725C; Dimension white:#DEDEDE; Mountain gray:#2F302A; Sapphire blue:#0D2C95; Lava red:#B52E39; Arctic white:#F4F4F4
<b>Interior Color</b>	Black:#000000; Black/Macchiato beige:#000000/#D4D0CF

## Steering wheel/interior mirror

<b>Steering Wheel Material</b>	<ul style="list-style-type: none"><li>• Leather</li></ul>
<b>Steering wheel position adjustment</b>	<ul style="list-style-type: none"><li>• Manual up and down front and rear adjustment</li></ul>
<b>Multi-function steering wheel</b>	<ul style="list-style-type: none"><li>•</li></ul>
<b>Heated Steering Wheel</b>	-
<b>Steering wheel memory</b>	-

## Steering wheel/interior mirror (continued)

<b>Trip computer display screen</b>	• Color
<b>Full LCD instrument panel</b>	•
<b>LCD instrument size</b>	• 10.25 inches
<b>Interior rearview mirror function</b>	• Manual anti-glare
<b>Gear shifting</b>	• Electronic gear shift
<b>Steering Wheel Shift Paddles</b>	•

## Intelligent configuration

<b>Connected Car Services</b>	•
<b>OTA Updates</b>	•

## Driving Control

<b>Driving mode switch</b>	• Sport; • Economy; • Standard/Comfort
<b>Automatic parking</b>	•
<b>Hill start assist</b>	•
<b>Engine start-stop technology</b>	•

## Driving Hardware

<b>Front/rear parking radar</b>	Front •/Rear •
<b>Driving Assistance Camera System</b>	• Reversing image

## In-car charging

<b>Multimedia/charging port</b>	•Type-C
<b>Number of USB/Type-C ports</b>	• 2 in the First row/1 in the 2nd-row

---

"●" = Standard equipment

"\_" = Not available

"○" = Optional equipment.

Note: These are Chinese market vehicles. Warranty coverage is not available outside of China.