

Vehicle Detail Report

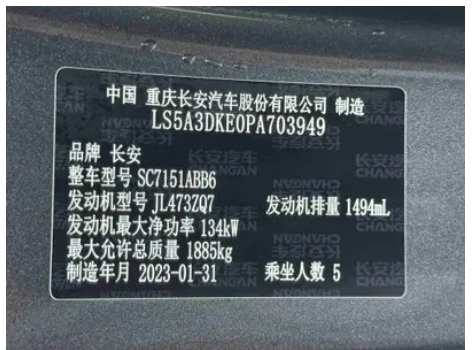
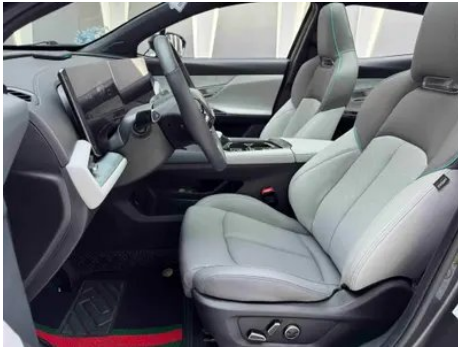
Changan UNI-T 2023 Second generation 1.5T Flagship

Basic Information

Brand	Changan
Mileage	39,000 km
Color	Dark gray
First Registration	2023-09-01
Transfer Count	0

Vehicle Images





Vehicle Condition

1. Rear body panel, Deformation. 2. Driver's seat rails and frame, Signs of removal. 3. Front passenger seat rails and frame, Signs of removal.

Configuration Information

Model Information

中国 重庆长安汽车股份有限公司 制造
LS5A3DKE0PA703949
品牌 长安
整车型号 SC7151ABB6
发动机型号 JL473ZQ7 发动机排量 1494ml
发动机最大净功率 134kW
最大允许总质量 1885kg
制造年月 2023-01-31 乘坐人数 5

Model Information (continued)

Model Name	Changan UNI-T 2023 Second generation 1.5T Flagship
Launch Date	2023.02

Basic parameters

Vehicle Class	Compact SUV
Energy Type	Gasoline
Maximum Power (kW)	138
Maximum Torque (N·m)	300
Transmission	7-speed wet dual-clutch
Body Type	SUV
Engine	1.5T 188 horsepower L4
Dimensions (L×W×H) (mm)	4535*1870*1565
Official 0-100 km/h Acceleration (s)	-
Top Speed (km/h)	205
Curb Weight (kg)	1480
Maximum Gross Weight (kg)	1885
WLTP Combined Fuel Consumption (L/100km)	6.45

engine

Engine Model	JL473ZQ7
Displacement (mL)	1494
Displacement (L)	1.5
Induction Type	Turbocharging
Cylinder Arrangement	L
Number of Cylinders	4
Valves per Cylinder	4
Valve Train	DOHC
Maximum Power (PS)	188
Max Power Speed (rpm)	5500
Max Torque Speed (rpm)	1600-4100
Maximum net power (kW)	134
Fuel Grade	92.
Fuel Delivery System	Direct injection

engine (continued)

Cylinder Head Material	Aluminum alloy
Cylinder Block Material	Aluminum alloy
Engine layout	Horizontal

Screen/System

Central control color screen	<ul style="list-style-type: none">• Touch LCD screen
Infotainment Screen Size	<ul style="list-style-type: none">• 12.8 inches
Bluetooth/In-car Phone	<ul style="list-style-type: none">•
Voice recognition control system	<ul style="list-style-type: none">• Multimedia system;• Navigation;• Telephone;• Air conditioning;• Windows
Facial Recognition	<ul style="list-style-type: none">•
Vehicle system storage (GB)	<ul style="list-style-type: none">•32
Car Intelligent Chip	<ul style="list-style-type: none">• Qualcomm Snapdragon 8155
Gesture Control	<ul style="list-style-type: none">•

Body

Length (mm)	4535
Width (mm)	1870
Height (mm)	1565
Wheelbase (mm)	2710
Front Track (mm)	1600
Rear Track (mm)	1610
Ground Clearance (Fully Loaded) (mm)	190
Door Opening Type	swing door
Number of Doors	5
Number of Seats	5
Fuel Tank Capacity (L)	55
Trunk volume (L)	-
Drag Coefficient (Cd)	-

Gearbox

Abbreviation	7-speed wet dual-clutch
Number of Gears	7
Transmission Type	Wet Dual-Clutch Transmission (DCT)

Chassis steering

Chassis steering (continued)

Drive Type	Front-engine, Front-wheel drive (FF)
Front Suspension Type	MacPherson independent suspension
Rear Suspension Type	Multi-link independent suspension
Power Steering Type	Electric power assistance
Vehicle structure	bearing type

Seat Configuration

Seat Material	<ul style="list-style-type: none">• Imitation leather
Main seat adjustment	<ul style="list-style-type: none">• Front and rear adjustment;• Backrest adjustment;• Height adjustment (2-way);• Lumbar support (2-way)
Co-seat adjustment method	<ul style="list-style-type: none">• Front and rear adjustment;• Backrest adjustment
Electric adjustment of driver's seat and passenger seat	Main •/Deputy •
Front seat functions	<ul style="list-style-type: none">• Heating;• Ventilation
Electric seat memory function	<ul style="list-style-type: none">• Driving position
Front passenger seat rear adjustable buttons	-
Rear seat folding	<ul style="list-style-type: none">• Proportional down
Front/rear center armrest	Front •/Rear •
Rear cup holder	<ul style="list-style-type: none">•
Sports style seats	<ul style="list-style-type: none">•

Active safety

Anti-lock Braking System (ABS)	<ul style="list-style-type: none">•
Electronic Brakeforce Distribution (EBD/CBC)	<ul style="list-style-type: none">•
Brake Assist System (EBA/BAS/BA)	<ul style="list-style-type: none">•
Traction Control System (ASR/TCS/TRC)	<ul style="list-style-type: none">•
Electronic Stability Control (ESC/ESP/DSC)	<ul style="list-style-type: none">•
Tire Pressure Monitoring System (TPMS)	<ul style="list-style-type: none">• Tire pressure display
Seat Belt Reminder	<ul style="list-style-type: none">• Front row

Active safety (continued)

ISOFIX Child Seat Anchors	•
Lane Departure Warning System (LDWS)	•
Autonomous Emergency Braking (AEB)	•
Driver Fatigue Detection	•
Forward Collision Warning (FCW)	•
Built-in Dashcam	•
Door Opening Warning (DOW)	•

Air conditioning/refrigerator

Air conditioning temperature control method	• Automatic air conditioning
Rear Independent Climate Control	-
Rear seat air vents	•
Temperature zone control	-
Car air purifier	•
In-cabin PM2.5 Filter	•
Negative ion generator	•
Car fragrance device	•

Passive safety

Driver/passenger airbag	Main •/Deputy •
Front/rear side airbags	Front •/Rear-
Front/rear head airbags (curtain airbags)	Front •/Rear •

Wheel brake

Front Brake Type	Ventilation disc
Rear Brake Type	Disc
Parking brake type	Electronic Parking
Front Tire Size	245/45 R20
Rear Tire Size	245/45 R20
Spare Tire Size	Not full-size

Audio/Interior Lighting

Speaker Brand Name	• Pioneer Pioneer
---------------------------	-------------------

Audio/Interior Lighting (continued)

Number of speakers	•11 speakers
---------------------------	--------------

Driving functions

Navigation traffic information display	•
Lane assist	•
Lane Keeping Assist System	•
Cruise control system	• Full speed adaptive cruise
Satellite navigation system	•
Driving assistance level	•L2
Rear Cross Traffic Alert	•
Lane centering	•
Road traffic sign recognition	•
Map Brand	• Gaud
Remote Parking	•
Parking Assist	•

Exterior lighting

Low beam light source	•LED
High beam light source	•LED
LED daytime running lights	•
Adaptive high and low beam	•
Automatic headlights	•
Height-adjustable headlights	•
Headlight Delay Off	•

Exterior mirrors

Exterior mirror function	•Electric adjustment; •Electric folding; •Rearview mirror memory; •Rearview mirror heating; •Automatically turn down when reversing; •Automatically fold when locking the car
---------------------------------	---

Appearance/anti-theft

Rim material	• Aluminum alloy
Electric trunk	•

Appearance/anti-theft (continued)

Electronic engine immobilizer	<ul style="list-style-type: none">•
Central locking system in the car	<ul style="list-style-type: none">•
Key Type	<ul style="list-style-type: none">• Remote key;• Bluetooth key
Keyless start system	<ul style="list-style-type: none">•
Keyless entry function	<ul style="list-style-type: none">• Front row
Electric trunk position memory	<ul style="list-style-type: none">•
Remote start function	<ul style="list-style-type: none">•
Hidden electric door handle	<ul style="list-style-type: none">•

Skylight/Glass

Sunroof Type	<ul style="list-style-type: none">• Panoramic sunroof cannot be opened
Front/rear electric windows	Front •/Rear •
One-touch window lifting function	<ul style="list-style-type: none">• Full vehicle
Window anti-pinch function	<ul style="list-style-type: none">•
Car makeup mirror	<ul style="list-style-type: none">• Main driving position;• First officer
Rear wiper	-
Rain sensor wiper function	<ul style="list-style-type: none">• Rainfall-sensing

Interior and exterior color

Exterior Color	Star Diamond Black #000000 interstellar gray #6A6E77 Star White #FFFFFF blue sky #ADC7DE ion blue #AAC4DB Atomic putty #ABACB0
Interior Color	gray White #B7B7B7 #FAFAFA

Steering wheel/interior mirror

Steering Wheel Material	<ul style="list-style-type: none">• Cortex
Steering wheel position adjustment	<ul style="list-style-type: none">• Manual up and down front and rear adjustment
Multi-function steering wheel	<ul style="list-style-type: none">•
Heated Steering Wheel	<ul style="list-style-type: none">•
Steering wheel memory	-

Steering wheel/interior mirror (continued)

Trip computer display screen	<ul style="list-style-type: none">• Color
Full LCD instrument panel	<ul style="list-style-type: none">•
LCD instrument size	<ul style="list-style-type: none">• 12.3 inches
Interior rearview mirror function	<ul style="list-style-type: none">• Manual anti-glare
Gear shifting	<ul style="list-style-type: none">• Electronic gear shift

Intelligent configuration

Connected Car Services	<ul style="list-style-type: none">•
OTA Updates	<ul style="list-style-type: none">•
4G/5G Network	<ul style="list-style-type: none">•4G
Mobile APP remote function	<ul style="list-style-type: none">• Door control; • Window control; • Vehicle start; • Air conditioning control; • Steering wheel heating; • Seat heating; • Seat ventilation; • Vehicle condition inquiry/diagnosis; • Vehicle positioning/car search
Wi-Fi hotspots	<ul style="list-style-type: none">•
Car KTV	<ul style="list-style-type: none">•

Driving Control

Driving mode switch	<ul style="list-style-type: none">• Sport; • Economy; • Standard/Comfort
Automatic parking	<ul style="list-style-type: none">•
Steep slope descent	<ul style="list-style-type: none">•
Hill start assist	<ul style="list-style-type: none">•
Engine start-stop technology	<ul style="list-style-type: none">•

Driving Hardware

Front/rear parking radar	Front •/Rear •
Driving Assistance Camera System	<ul style="list-style-type: none">• 360-degree panoramic image
Number of cameras	<ul style="list-style-type: none">• 5
Number of ultrasonic radars	<ul style="list-style-type: none">• 12
Transparent chassis/540-degree imaging	<ul style="list-style-type: none">•
Millimeter wave radar quantity	<ul style="list-style-type: none">• 5

In-car charging

In-car charging (continued)

Multimedia/charging port	•USB
Number of USB/Type-C ports	• 2 in the First row/1 in the 2nd-row
Mobile phone wireless charging function	• Front row
Luggage compartment 12V power socket	•

"●" = Standard equipment

"-" = Not available

"○" = Optional equipment.

Note: These are Chinese market vehicles. Warranty coverage is not available outside of China.