

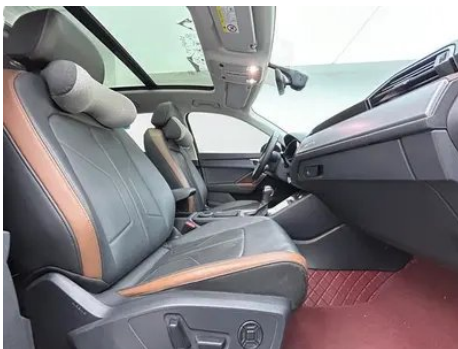
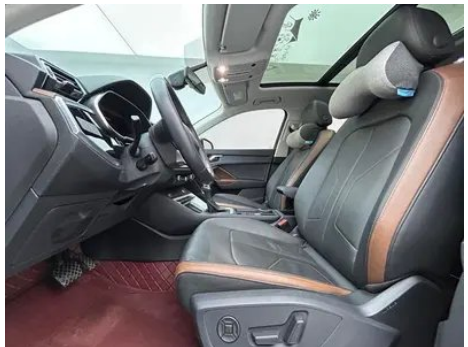
Vehicle Detail Report

Audi Q3 2022 35 TFSI Fashion and Elegant

Basic Information

Brand	Audi
Mileage	26,600 km
Color	Dark gray
First Registration	2022-08-01
Transfer Count	1

Vehicle Images





Vehicle Condition

1. Driver's seat rails and frame, Signs of removal. 2. Front passenger seat rails and frame, Signs of removal.

Configuration Information

Model Information

Model Name	Audi Q3 2022 35 TFSI Fashion and Elegant
Launch Date	2021.09

Basic parameters

Vehicle Class	Compact SUV
Energy Type	Gasoline
Maximum Power (kW)	110

Basic parameters (continued)

Maximum Torque (N·m)	250
Transmission	7-speed wet dual-clutch
Body Type	SUV
Engine	1.4L 150 hp L4
Dimensions (L×W×H) (mm)	4481*1848*1616
Official 0-100 km/h Acceleration (s)	9.8
Top Speed (km/h)	200
Curb Weight (kg)	1570
Maximum Gross Weight (kg)	2065
NEDC Combined Fuel Consumption (L/100km)	6.7
WLTP Combined Fuel Consumption (L/100km)	7.08

engine

Engine Model	EA211-DJS
Displacement (mL)	1395
Displacement (L)	1.4
Induction Type	Turbocharging
Cylinder Arrangement	L
Number of Cylinders	4
Valves per Cylinder	4
Valve Train	DOHC
Maximum Power (PS)	150
Max Power Speed (rpm)	5000-6000
Max Torque Speed (rpm)	1750-3000
Maximum net power (kW)	110
Fuel Grade	95.
Fuel Delivery System	Direct injection
Cylinder Head Material	Aluminum alloy
Cylinder Block Material	Aluminum alloy
Engine layout	Horizontal

Screen/System

Screen/System (continued)

Central control color screen	<ul style="list-style-type: none">• Touch LCD screen
Infotainment Screen Size	<ul style="list-style-type: none">• 10.1 inches
Bluetooth/In-car Phone	<ul style="list-style-type: none">•
Smartphone Integration/Mirroring	<ul style="list-style-type: none">• Apple CarPlay support;• Baidu CarLife support;• Android Auto support
Voice recognition control system	<ul style="list-style-type: none">○ Multimedia system;○ Navigation;○ Telephone

Body

Length (mm)	4481
Width (mm)	1848
Height (mm)	1616
Wheelbase (mm)	2680
Front Track (mm)	1578
Rear Track (mm)	1570
Ground Clearance (Fully Loaded) (mm)	152
Door Opening Type	swing door
Number of Doors	5
Number of Seats	5
Fuel Tank Capacity (L)	60
Trunk volume (L)	450
Drag Coefficient (Cd)	-
Approach Angle (°)	17
Departure Angle (°)	22
Minimum Turning Radius (m)	6

Gearbox

Abbreviation	7-speed wet dual-clutch
Number of Gears	7
Transmission Type	Wet Dual-Clutch Transmission (DCT)

Chassis steering

Drive Type	Front-engine, Front-wheel drive (FF)
Front Suspension Type	MacPherson independent suspension
Rear Suspension Type	Multi-link independent suspension

Chassis steering (continued)

Power Steering Type	Electric power assistance
Vehicle structure	bearing type

Seat Configuration

Seat Material	• Leather
Main seat adjustment	• Front and rear adjustment; • Backrest adjustment; • Height adjustment (4-way); • Lumbar support (4-way)
Co-seat adjustment method	• Front and rear adjustment; • Backrest adjustment; • Height adjustment (4-way); • Lumbar support (4-way)
Electric adjustment of driver's seat and passenger seat	Main •/Deputy •
Front seat functions	○ Heating (USD 368)
Front passenger seat rear adjustable buttons	-
Second row seat adjustment	• Front and rear adjustment; • Backrest adjustment
Rear seat folding	• Proportional down
Front/rear center armrest	Front •/Rear •
Rear cup holder	•

Active safety

Anti-lock Braking System (ABS)	•
Electronic Brakeforce Distribution (EBD/CBC)	•
Brake Assist System (EBA/BAS/BA)	•
Traction Control System (ASR/TCS/TRC)	•
Electronic Stability Control (ESC/ESP/DSC)	•
Tire Pressure Monitoring System (TPMS)	• Tire pressure alarm
Seat Belt Reminder	• Full vehicle
ISOFIX Child Seat Anchors	•
Lane Departure Warning System (LDWS)	○

Active safety (continued)

Autonomous Emergency Braking (AEB)	•
Driver Fatigue Detection	•
Forward Collision Warning (FCW)	•
Emergency Call System (eCall)	○

Air conditioning/refrigerator

Air conditioning temperature control method	• Automatic air conditioning
Rear Independent Climate Control	•
Rear seat air vents	•
Temperature zone control	•
Car air purifier	-
In-cabin PM2.5 Filter	-

Passive safety

Driver/passenger airbag	Main •/Deputy •
Front/rear side airbags	Front •/Rear-
Front/rear head airbags (curtain airbags)	Front •/Rear •

Wheel brake

Front Brake Type	Ventilation disc
Rear Brake Type	Disc
Parking brake type	Electronic Parking
Front Tire Size	235/50 R19
Rear Tire Size	235/50 R19
Spare Tire Size	Not full-size

Audio/Interior Lighting

Speaker Brand Name	○SONOS(USD 1,250)
Number of speakers	○ ≥ 12 horns; • 10-11 horns
Interior ambient lighting	• Monochrome; ○ 30 colors (USD 368)
Touch reading light	•

Driving functions

Navigation traffic information display	○
---	---

Driving functions (continued)

Lane assist	○
Lane Keeping Assist System	○(USD 809)
Cruise control system	• Constant speed cruise; ○ Full speed adaptive cruise (USD 1,912)
Satellite navigation system	○
Driving assistance level	○L2
Rear Cross Traffic Alert	○
Parking Assist	•

Exterior lighting

Low beam light source	•LED
High beam light source	•LED
LED daytime running lights	•
Adaptive high and low beam	-
Automatic headlights	•
Height-adjustable headlights	•
Headlight Delay Off	•
Lighting features	○ Matrix (USD 882)
Headlight rain and fog mode	•
Headlight cleaning device	○(USD 74)

Exterior mirrors

Exterior mirror function	• Electric adjustment; • Electric folding; • Heated mirrors; • Automatic down-folding upon reversing; • Automatic folding when the car is locked; ○ Auto-dimming (USD 147)
---------------------------------	--

Appearance/anti-theft

Rim material	• Aluminum alloy
Electric trunk	•
Electronic engine immobilizer	•
Central locking system in the car	•
Key Type	• Remote key

Appearance/anti-theft (continued)

Keyless start system	<ul style="list-style-type: none">•
Keyless entry function	<ul style="list-style-type: none">• Front row
Electric trunk position memory	<ul style="list-style-type: none">•
Roof rack	<ul style="list-style-type: none">•

Skylight/Glass

Sunroof Type	<ul style="list-style-type: none">• Openable panoramic sunroof
Front/rear electric windows	Front •/Rear •
One-touch window lifting function	<ul style="list-style-type: none">• Full vehicle
Window anti-pinch function	<ul style="list-style-type: none">•
Car makeup mirror	<ul style="list-style-type: none">• Main driver's lamp; • co-pilot's lamp
Rear wiper	<ul style="list-style-type: none">•
Rain sensor wiper function	<ul style="list-style-type: none">• Rainfall-sensing

Interior and exterior color

Exterior Color	Glacier White #F6F6F6 Legendary Black #101010 Crocodile green #A0B4A0 brilliant purple #3C314C Khan Green #33352A Tango Red #9B1014 Sky Cloud Gray #646464 Sepang Blue #2846BE
Interior Color	Black Brown #000000 #D2503C Black #000000 Black Chestnut brown #000000 #544540 Gray #969696

Steering wheel/interior mirror

Steering Wheel Material	<ul style="list-style-type: none">• Leather
Steering wheel position adjustment	<ul style="list-style-type: none">• Manual up and down front and rear adjustment
Multi-function steering wheel	<ul style="list-style-type: none">•
Heated Steering Wheel	○(USD 147)
Steering wheel memory	-
Trip computer display screen	<ul style="list-style-type: none">• Color
Full LCD instrument panel	<ul style="list-style-type: none">•
LCD instrument size	<ul style="list-style-type: none">• 12.3 inches

Steering wheel/interior mirror (continued)

Interior rearview mirror function	<ul style="list-style-type: none">• Automatic anti-glare
Gear shifting	<ul style="list-style-type: none">• Mechanical gear shift
ETC Device	○(USD 74)
Steering Wheel Shift Paddles	○(USD 147)

Intelligent configuration

Connected Car Services	○
OTA Updates	-
4G/5G Network	○4G
Mobile APP remote function	<ul style="list-style-type: none">• Door control;• Vehicle status check/diagnostics

Driving Control

Driving mode switch	<ul style="list-style-type: none">• Movement
Automatic parking	<ul style="list-style-type: none">•
Hill start assist	<ul style="list-style-type: none">•
Engine start-stop technology	<ul style="list-style-type: none">•

Driving Hardware

Front/rear parking radar	Front •/Rear •
Driving Assistance Camera System	<ul style="list-style-type: none">• Reversing image; ○ 360-degree panoramic image (USD 735)
Number of cameras	<ul style="list-style-type: none">• 1
Number of ultrasonic radars	<ul style="list-style-type: none">• 12

In-car charging

Multimedia/charging port	○SD;•Type-C
Number of USB/Type-C ports	<ul style="list-style-type: none">• 2 in the front row/2 in the back row
Luggage compartment 12V power socket	<ul style="list-style-type: none">•

"●" = Standard equipment

"□" = Not available

"○" = Optional equipment.

Note: These are Chinese market vehicles. Warranty coverage is not available outside of China.