

Vehicle Detail Report

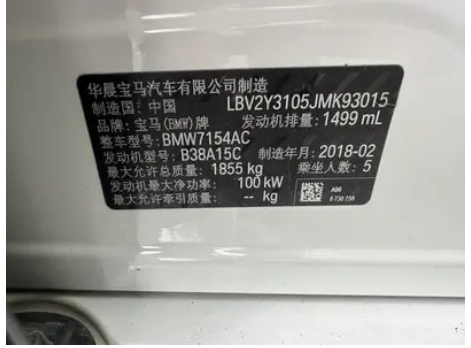
BMW 1 Series 2018 118i Sporty

Basic Information

Brand	BMW
Mileage	90,000 km
Color	White
First Registration	2018-03-01
Transfer Count	0

Vehicle Images





Vehicle Condition

1. Inner side of right C-pillar, Dent.

Configuration Information

Model Information

Model Name	BMW 1 Series 2018 118i Sporty
Launch Date	2018.01

Basic parameters

Vehicle Class	compact car
Energy Type	Gasoline
Maximum Power (kW)	100
Maximum Torque (N·m)	220

Basic parameters (continued)

Transmission	6-speed manual integration
Body Type	Sedan
Engine	1.5L 136 hp L3
Dimensions (L×W×H) (mm)	4456*1803*1446
Official 0-100 km/h Acceleration (s)	9.4
Top Speed (km/h)	212
Curb Weight (kg)	1380
Maximum Gross Weight (kg)	-
NEDC Combined Fuel Consumption (L/100km)	5.5

engine

Engine Model	B38A15C
Displacement (mL)	1499
Displacement (L)	1.5
Induction Type	Turbocharging
Cylinder Arrangement	L
Number of Cylinders	3
Valves per Cylinder	4
Valve Train	DOHC
Maximum Power (PS)	136
Max Power Speed (rpm)	4400
Max Torque Speed (rpm)	1250
Maximum net power (kW)	-
Fuel Grade	95.
Fuel Delivery System	Direct injection
Cylinder Head Material	Aluminum alloy
Cylinder Block Material	Aluminum alloy

Screen/System

Central control color screen	• Ordinary LCD screen; ○ Touch LCD screen
Infotainment Screen Size	•6.5 inches; ○8.8 inches
Bluetooth/In-car Phone	•

Body

Body (continued)

Length (mm)	4456
Width (mm)	1803
Height (mm)	1446
Wheelbase (mm)	2670
Front Track (mm)	-
Rear Track (mm)	-
Door Opening Type	-
Number of Doors	4
Number of Seats	5
Fuel Tank Capacity (L)	50
Trunk volume (L)	-
Drag Coefficient (Cd)	-

Gearbox

Abbreviation	6-speed manual integration
Number of Gears	6
Transmission Type	Automatic Transmission with Manual Mode (AT)

Chassis steering

Drive Type	Front-engine, Front-wheel drive (FF)
Front Suspension Type	MacPherson independent suspension
Rear Suspension Type	Multi-link independent suspension
Power Steering Type	Electric power assistance
Vehicle structure	bearing type

Seat Configuration

Seat Material	○ Leather (USD 1,397); • Imitation leather
Main seat adjustment	• Front-to-back adjustment; • Backrest adjustment; • Height adjustment (2-way); • Leg rest adjustment; ○ Lumbar support (4-way)
Co-seat adjustment method	• Front-to-back adjustment; • Backrest adjustment; • Height adjustment (2-way); • Leg rest adjustment; ○ Lumbar support (4-way)

Seat Configuration (continued)

Electric adjustment of driver's seat and passenger seat	Main •/Deputy •
Front seat functions	<input type="radio"/> Heating (USD 397)
Electric seat memory function	• Driving position
Front passenger seat rear adjustable buttons	-
Rear seat folding	<input type="radio"/> Proportional folding
Front/rear center armrest	Front/rear rear seat center armrest (USD 500)
Rear cup holder	<input type="radio"/>

Active safety

Anti-lock Braking System (ABS)	•
Electronic Brakeforce Distribution (EBD/CBC)	•
Brake Assist System (EBA/BAS/BA)	•
Traction Control System (ASR/TCS/TRC)	•
Electronic Stability Control (ESC/ESP/DSC)	•
Tire Pressure Monitoring System (TPMS)	• Tire pressure alarm
Seat Belt Reminder	• Front row
ISOFIX Child Seat Anchors	•
Lane Departure Warning System (LDWS)	<input type="radio"/>
Autonomous Emergency Braking (AEB)	<input type="radio"/>
Driver Fatigue Detection	-
Emergency Call System (eCall)	•

Air conditioning/refrigerator

Air conditioning temperature control method	• Manual air conditioning
Rear Independent Climate Control	-
Rear seat air vents	-

Air conditioning/refrigerator (continued)

Temperature zone control	-
Car air purifier	-
In-cabin PM2.5 Filter	-

Passive safety

Driver/passenger airbag	Main •/Deputy •
Front/rear side airbags	Front •/Rear-
Front/rear head airbags (curtain airbags)	Front •/Rear •
Run-flat tires	•

Wheel brake

Front Brake Type	Ventilation disc
Rear Brake Type	Disc
Parking brake type	Electronic Parking
Front Tire Size	-
Rear Tire Size	-
Spare Tire Size	None

Audio/Interior Lighting

Number of speakers	• 4-5 speakers
Interior ambient lighting	•

Driving functions

Navigation traffic information display	-
Lane assist	-
Lane Keeping Assist System	-
Cruise control system	○ Cruise control
Satellite navigation system	○
Parking Assist	○

Exterior lighting

Low beam light source	•LED
High beam light source	•LED
LED daytime running lights	•
Adaptive high and low beam	-
Automatic headlights	•

Exterior lighting (continued)

Front fog lights	• Halogen
Height-adjustable headlights	•
Headlight Delay Off	•

Exterior mirrors

Exterior mirror function	• Electric adjustment; ○ Electric folding; ○ Mirror memory function; ○ Heated mirrors; ○ Automatic downfolding on reverse
---------------------------------	---

Appearance/anti-theft

Rim material	• Aluminum alloy
Electric trunk	-
Electronic engine immobilizer	•
Central locking system in the car	•
Key Type	• Remote key
Keyless start system	•
Keyless entry function	○ Front row
Hands-free Trunk	○

Skylight/Glass

Sunroof Type	• Openable panoramic sunroof
Front/rear electric windows	Front •/Rear •
One-touch window lifting function	• Full car
Window anti-pinch function	•
Car makeup mirror	• Main driver's lamp; • co-pilot's lamp
Rear wiper	-
Rain sensor wiper function	• Rainfall-sensing

Interior and exterior color

Interior and exterior color (continued)

Exterior Color	Ore white:#E7E7E7; Estolan:#1559AC; Burgundy red:#600001; Platinum silver:#605F57; Mediterranean blue:#092A57; Cashite silver:#C6C1B4; Melbourne red:#610303; Dawn gold:#BF8D32; Starlight Brown:#28160F; Snow Mountain White:#FAFAFA
Interior Color	Black: #000000; Black/Canberra Beige: #000000/#EEDDC4; Black/Saddle Brown: #000000/#8E5D3C; Charcoal Gray: #1F1F1F

Steering wheel/interior mirror

Steering Wheel Material	• Leather
Steering wheel position adjustment	• Manual up and down front and rear adjustment
Multi-function steering wheel	•
Heated Steering Wheel	-
Steering wheel memory	-
Trip computer display screen	• Color
Full LCD instrument panel	-
Interior rearview mirror function	<input type="radio"/> Automatic anti-glare (USD 191)

Intelligent configuration

Connected Car Services	<input type="radio"/>
OTA Updates	-

Driving Control

Driving mode switch	• Sport; • Economy; • Standard/Comfort
Automatic parking	-
Hill start assist	•
Engine start-stop technology	•

Driving Hardware

Front/rear parking radar	Front <input type="radio"/> /Rear •
Driving Assistance Camera System	<input type="radio"/> Reversing image

In-car charging

Multimedia/charging port	•USB
---------------------------------	------

In-car charging (continued)

Number of USB/Type-C ports	• 1 in the front row
-----------------------------------	----------------------

"●" = Standard equipment

"_" = Not available

"○" = Optional equipment.

Note: These are Chinese market vehicles. Warranty coverage is not available outside of China.