

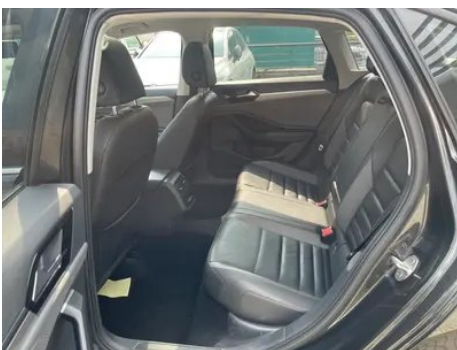
# Vehicle Detail Report

## Volkswagen Sagitar 2020 280TSI DSG Comfortable Country VI

### Basic Information

Brand	Volkswagen
Mileage	81,000 km
Color	Black
First Registration	2020-12-01
Transfer Count	1

### Vehicle Images





## Vehicle Condition

1. Left upper side rail, Paint repair. 2. Right upper side rail, Paint repair. 3. Right rocker panel, Outer-side deformation. 4. Spare wheel well, Water accumulation. 5. Left rear quarter panel, Paint repair. 6. Right rear quarter panel, Paint repair.

## Configuration Information

### Model Information

<b>Model Name</b>	Volkswagen Sagitar 2020 280TSI DSG Comfortable country VI
<b>Launch Date</b>	2019.12

### Basic parameters

<b>Vehicle Class</b>	compact car
<b>Energy Type</b>	Gasoline

## Basic parameters (continued)

<b>Maximum Power (kW)</b>	110
<b>Maximum Torque (N·m)</b>	250
<b>Transmission</b>	7-speed dry dual clutch
<b>Body Type</b>	Sedan
<b>Engine</b>	1.4L 150 hp L4
<b>Dimensions (L×W×H) (mm)</b>	4753*1800*1462
<b>Official 0-100 km/h Acceleration (s)</b>	9.3
<b>Top Speed (km/h)</b>	200
<b>Curb Weight (kg)</b>	1410
<b>Maximum Gross Weight (kg)</b>	-
<b>NEDC Combined Fuel Consumption (L/100km)</b>	5.7

## engine

<b>Engine Model</b>	EA211-DJS
<b>Displacement (mL)</b>	1395
<b>Displacement (L)</b>	1.4
<b>Induction Type</b>	Turbocharging
<b>Cylinder Arrangement</b>	L
<b>Number of Cylinders</b>	4
<b>Valves per Cylinder</b>	4
<b>Valve Train</b>	DOHC
<b>Maximum Power (PS)</b>	150
<b>Max Power Speed (rpm)</b>	5000-6000
<b>Max Torque Speed (rpm)</b>	1750-3000
<b>Maximum net power (kW)</b>	-
<b>Fuel Grade</b>	95.
<b>Fuel Delivery System</b>	Direct injection
<b>Cylinder Head Material</b>	Aluminum alloy
<b>Cylinder Block Material</b>	Aluminum alloy

## Screen/System

<b>Central control color screen</b>	<ul style="list-style-type: none"><li>• Touch LCD screen</li></ul>
<b>Infotainment Screen Size</b>	<ul style="list-style-type: none"><li>• 6.5 inches; ○ 8 inches</li></ul>

## Screen/System (continued)

<b>Bluetooth/In-car Phone</b>	•
<b>Smartphone Integration/Mirroring</b>	• Support CarPlay; • Support CarLife; • Factory interconnection/mapping
<b>Voice recognition control system</b>	○ Multimedia system; ○ Navigation; ○ Telephone

## Body

<b>Length (mm)</b>	4753
<b>Width (mm)</b>	1800
<b>Height (mm)</b>	1462
<b>Wheelbase (mm)</b>	2731
<b>Front Track (mm)</b>	1543
<b>Rear Track (mm)</b>	1546
<b>Door Opening Type</b>	swing door
<b>Number of Doors</b>	4
<b>Number of Seats</b>	5
<b>Fuel Tank Capacity (L)</b>	50
<b>Trunk volume (L)</b>	553
<b>Drag Coefficient (Cd)</b>	-
<b>Approach Angle (°)</b>	16
<b>Departure Angle (°)</b>	15

## Gearbox

<b>Abbreviation</b>	7-speed dry dual clutch
<b>Number of Gears</b>	7
<b>Transmission Type</b>	Dry Dual-Clutch Transmission (DCT)

## Chassis steering

<b>Drive Type</b>	Front-engine, Front-wheel drive (FF)
<b>Front Suspension Type</b>	MacPherson independent suspension
<b>Rear Suspension Type</b>	Multi-link independent suspension
<b>Power Steering Type</b>	Electric power assistance
<b>Vehicle structure</b>	bearing type

## Seat Configuration

<b>Seat Material</b>	• Leather
----------------------	-----------

## Seat Configuration (continued)

<b>Main seat adjustment</b>	<ul style="list-style-type: none"><li>• Front and rear adjustment;</li><li>• Backrest adjustment;</li><li>• Height adjustment (2-way);</li><li>• Lumbar support (2-way)</li></ul>
<b>Co-seat adjustment method</b>	<ul style="list-style-type: none"><li>• Front and rear adjustment;</li><li>• Backrest adjustment;</li><li>• Height adjustment (2-way)</li></ul>
<b>Electric adjustment of driver's seat and passenger seat</b>	-
<b>Front seat functions</b>	○ Heating
<b>Front passenger seat rear adjustable buttons</b>	-
<b>Rear seat folding</b>	<ul style="list-style-type: none"><li>• Proportional down</li></ul>
<b>Front/rear center armrest</b>	Front •/Rear •
<b>Rear cup holder</b>	<ul style="list-style-type: none"><li>•</li></ul>

## Active safety

<b>Anti-lock Braking System (ABS)</b>	<ul style="list-style-type: none"><li>•</li></ul>
<b>Electronic Brakeforce Distribution (EBD/CBC)</b>	<ul style="list-style-type: none"><li>•</li></ul>
<b>Brake Assist System (EBA/BAS/BA)</b>	<ul style="list-style-type: none"><li>•</li></ul>
<b>Traction Control System (ASR/TCS/TRC)</b>	<ul style="list-style-type: none"><li>•</li></ul>
<b>Electronic Stability Control (ESC/ESP/DSC)</b>	<ul style="list-style-type: none"><li>•</li></ul>
<b>Tire Pressure Monitoring System (TPMS)</b>	<ul style="list-style-type: none"><li>• Tire pressure alarm</li></ul>
<b>Seat Belt Reminder</b>	<ul style="list-style-type: none"><li>• Full car</li></ul>
<b>ISOFIX Child Seat Anchors</b>	<ul style="list-style-type: none"><li>•</li></ul>
<b>Lane Departure Warning System (LDWS)</b>	-
<b>Autonomous Emergency Braking (AEB)</b>	-
<b>Driver Fatigue Detection</b>	<ul style="list-style-type: none"><li>•</li></ul>

## Air conditioning/refrigerator

<b>Air conditioning temperature control method</b>	<ul style="list-style-type: none"><li>• Manual air conditioning;</li><li>○ Automatic air conditioning</li></ul>
<b>Rear Independent Climate Control</b>	-

## Air conditioning/refrigerator (continued)

Rear seat air vents	•
Temperature zone control	○
Car air purifier	-
In-cabin PM2.5 Filter	○

## Passive safety

Driver/passenger airbag	Main •/Deputy •
Front/rear side airbags	Front •/Rear-
Front/rear head airbags (curtain airbags)	Front •/Rear •
Knee airbag	• Main driver knee airbag

## Wheel brake

Front Brake Type	Ventilation disc
Rear Brake Type	Disc
Parking brake type	Electronic Parking
Front Tire Size	205/60 R16
Rear Tire Size	205/60 R16
Spare Tire Size	Not full-size

## Audio/Interior Lighting

Number of speakers	• 6 speakers
Interior ambient lighting	• 10 colors

## Driving functions

Navigation traffic information display	○
Lane assist	-
Lane Keeping Assist System	-
Cruise control system	• Cruise control
Satellite navigation system	○
Parking Assist	-

## Exterior lighting

Low beam light source	•LED
High beam light source	•LED
LED daytime running lights	•
Adaptive high and low beam	-

## Exterior lighting (continued)

<b>Automatic headlights</b>	<input type="radio"/>
<b>Front fog lights</b>	<ul style="list-style-type: none"><li>• Halogen</li></ul>
<b>Height-adjustable headlights</b>	-
<b>Headlight Delay Off</b>	<input type="radio"/>
<b>Turn signal lamp</b>	<ul style="list-style-type: none"><li>•</li></ul>

## Exterior mirrors

<b>Exterior mirror function</b>	<ul style="list-style-type: none"><li>• Electric adjustment; <input type="radio"/> Electric folding; • Rearview mirror heating; <input type="radio"/> Automatic downward turning when reversing; <input type="radio"/> Automatic folding when locking the car</li></ul>
---------------------------------	---

## Appearance/anti-theft

<b>Rim material</b>	<ul style="list-style-type: none"><li>• Aluminum alloy</li></ul>
<b>Electric trunk</b>	-
<b>Electronic engine immobilizer</b>	<ul style="list-style-type: none"><li>•</li></ul>
<b>Central locking system in the car</b>	<ul style="list-style-type: none"><li>•</li></ul>
<b>Key Type</b>	<ul style="list-style-type: none"><li>• Remote key</li></ul>
<b>Keyless start system</b>	<input type="radio"/>
<b>Keyless entry function</b>	<input type="radio"/> Front row

## Skylight/Glass

<b>Sunroof Type</b>	<ul style="list-style-type: none"><li>• Openable panoramic sunroof</li></ul>
<b>Front/rear electric windows</b>	Front <ul style="list-style-type: none"><li>•</li></ul> /Rear <ul style="list-style-type: none"><li>•</li></ul>
<b>One-touch window lifting function</b>	<ul style="list-style-type: none"><li>• Full car</li></ul>
<b>Window anti-pinch function</b>	<ul style="list-style-type: none"><li>•</li></ul>
<b>Car makeup mirror</b>	<ul style="list-style-type: none"><li>• Main driver's lamp; • co-pilot's lamp</li></ul>
<b>Rear wiper</b>	-
<b>Rain sensor wiper function</b>	<input type="radio"/> Rainfall-sensing

## Interior and exterior color

## Interior and exterior color (continued)

<b>Exterior Color</b>	Polar white:#FFFFFF; Storm blue:#353C95; Sea shell gold:#C8AA96; Gravel ash:#787882; Romani red:#981537; Manganese black:#010101; Crystal silver:#ABB0B3; Pacific Blue:#255471
<b>Interior Color</b>	Black:#252B2A; Black/Grey:#000000/#6D7F85; Black/Brown:#252B2A/#925140

## Steering wheel/interior mirror

<b>Steering Wheel Material</b>	• Leather
<b>Steering wheel position adjustment</b>	• Manual up and down front and rear adjustment
<b>Multi-function steering wheel</b>	•
<b>Heated Steering Wheel</b>	-
<b>Steering wheel memory</b>	-
<b>Trip computer display screen</b>	• Monochrome; ○ Color
<b>Full LCD instrument panel</b>	○
<b>LCD instrument size</b>	○ 10.3 inches
<b>Interior rearview mirror function</b>	• Manual anti-glare; ○ Automatic anti-glare

## Intelligent configuration

<b>Connected Car Services</b>	-
<b>OTA Updates</b>	-

## Driving Control

<b>Driving mode switch</b>	• Sport; • Economy; • Standard/Comfort
<b>Automatic parking</b>	•
<b>Hill start assist</b>	•
<b>Engine start-stop technology</b>	•

## Driving Hardware

<b>Front/rear parking radar</b>	Front-/Rear •
---------------------------------	---------------

## In-car charging

<b>Multimedia/charging port</b>	•USB;•SD
<b>Number of USB/Type-C ports</b>	• 2 in the front row/2 in the back row

## Optional Package

<b>Optional Package</b>	Optional package 3(USD 147; Including: front seat heating); Optional package B(USD 250; Including: headlight photosensitive automatic opening and leaving home function, intelligent rain sensor, automatic anti-glare inner rearview mirror, touch-control dual-zone air conditioner, Clean Air2.0 air filtration function); Optional package 1(USD 441; Including: keyless entry, one-button start, exterior ambient light (side sign, exterior rearview mirror to illuminate the ground, door handle), exterior rearview mirror electric folding, reverse flip); Optional package A(USD 588; Including: Active Info Display full LCD digital instrument intelligent car navigation multimedia system)
-------------------------	--

"●" = Standard equipment

"-" = Not available

"○" = Optional equipment.

Note: These are Chinese market vehicles. Warranty coverage is not available outside of China.