

Vehicle Detail Report

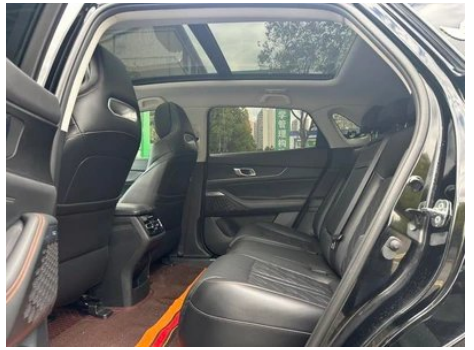
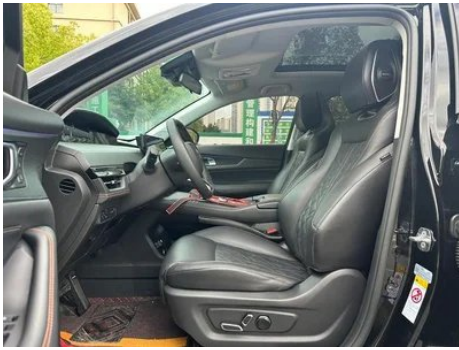
Changan UNI-K 2021 2.0T Premium Trim

Basic Information

Brand	Changan
Mileage	55,000 km
Color	Black
First Registration	2022-02-01
Transfer Count	0

Vehicle Images







Vehicle Condition

1. Right rear quarter panel, Body panel repair.

Configuration Information

Model Information

Model Name	Changan UNI-K 2021 2.0T Prestige Model
Launch Date	2021.03

Basic parameters

Vehicle Class	Mid-size SUV
Energy Type	Gasoline
Maximum Power (kW)	171
Maximum Torque (N·m)	390
Transmission	8-gear manual integration
Body Type	SUV
Engine	2.0T 233 horsepower L4
Dimensions (L×W×H) (mm)	4865*1948*1700
Official 0-100 km/h Acceleration (s)	-
Top Speed (km/h)	200
Curb Weight (kg)	1815
Maximum Gross Weight (kg)	2190
NEDC Combined Fuel Consumption (L/100km)	8.4
Measured 0-100 km/h Acceleration (s)	8.83
Measured 100-0 km/h Braking Distance (m)	39.13
Real-world Fuel Consumption (L/100km)	10.3

engine

engine (continued)

Engine Model	JL486ZQ5
Displacement (mL)	1998
Displacement (L)	2.0
Induction Type	Turbocharging
Cylinder Arrangement	L
Number of Cylinders	4
Valves per Cylinder	4
Valve Train	DOHC
Maximum Power (PS)	233
Max Power Speed (rpm)	5500
Max Torque Speed (rpm)	1900-3300
Maximum net power (kW)	166
Fuel Grade	92.
Fuel Delivery System	Direct injection
Cylinder Head Material	Aluminum alloy
Cylinder Block Material	Cast iron
Engine layout	Horizontal

Screen/System

Central control color screen	<ul style="list-style-type: none">• Touch LCD screen
Infotainment Screen Size	<ul style="list-style-type: none">• 12.3 inches
Bluetooth/In-car Phone	<ul style="list-style-type: none">•
Voice recognition control system	<ul style="list-style-type: none">• Multimedia system;• Navigation;• Telephone;• Air conditioning;• Sunroof
Facial Recognition	<ul style="list-style-type: none">•
Gesture Control	<ul style="list-style-type: none">•

Body

Length (mm)	4865
Width (mm)	1948
Height (mm)	1700
Wheelbase (mm)	2890
Front Track (mm)	1636
Rear Track (mm)	1650

Body (continued)

Ground Clearance (Fully Loaded) (mm)	173
Door Opening Type	swing door
Number of Doors	5
Number of Seats	5
Fuel Tank Capacity (L)	70
Trunk volume (L)	-
Drag Coefficient (Cd)	-
Approach Angle (°)	19
Departure Angle (°)	27

Gearbox

Abbreviation	8-gear manual integration
Number of Gears	8
Transmission Type	Automatic Transmission with Manual Mode (AT)

Chassis steering

Drive Type	Front-engine, Front-wheel drive (FF)
Front Suspension Type	MacPherson independent suspension
Rear Suspension Type	Multi-link independent suspension
Power Steering Type	Electric power assistance
Vehicle structure	bearing type

Seat Configuration

Seat Material	<ul style="list-style-type: none">• Imitation leather
Main seat adjustment	<ul style="list-style-type: none">• Front and rear adjustment;• Backrest adjustment;• Height adjustment (4-way);• Lumbar support (4-way)
Co-seat adjustment method	<ul style="list-style-type: none">• Front and rear adjustment;• Backrest adjustment;• Lumbar support (4-way)
Electric adjustment of driver's seat and passenger seat	Main •/Deputy •
Front seat functions	<ul style="list-style-type: none">• Heating;• Ventilation
Electric seat memory function	<ul style="list-style-type: none">• Driving position
Front passenger seat rear adjustable buttons	-

Seat Configuration (continued)

Second row seat adjustment	<ul style="list-style-type: none">• Backrest adjustment
Rear seat folding	<ul style="list-style-type: none">• Proportional down
Front/rear center armrest	Front •/Rear •
Rear cup holder	<ul style="list-style-type: none">•
Sports style seats	<ul style="list-style-type: none">•

Active safety

Anti-lock Braking System (ABS)	<ul style="list-style-type: none">•
Electronic Brakeforce Distribution (EBD/CBC)	<ul style="list-style-type: none">•
Brake Assist System (EBA/BAS/BA)	<ul style="list-style-type: none">•
Traction Control System (ASR/TCS/TRC)	<ul style="list-style-type: none">•
Electronic Stability Control (ESC/ESP/DSC)	<ul style="list-style-type: none">•
Tire Pressure Monitoring System (TPMS)	<ul style="list-style-type: none">• Tire pressure display
Seat Belt Reminder	<ul style="list-style-type: none">• Full car
ISOFIX Child Seat Anchors	<ul style="list-style-type: none">•
Lane Departure Warning System (LDWS)	<ul style="list-style-type: none">•
Autonomous Emergency Braking (AEB)	<ul style="list-style-type: none">•
Driver Fatigue Detection	<ul style="list-style-type: none">•
Forward Collision Warning (FCW)	<ul style="list-style-type: none">•
Built-in Dashcam	<ul style="list-style-type: none">•
Door Opening Warning (DOW)	<ul style="list-style-type: none">•

Air conditioning/refrigerator

Air conditioning temperature control method	<ul style="list-style-type: none">• Automatic air conditioning
Rear Independent Climate Control	-
Rear seat air vents	<ul style="list-style-type: none">•
Temperature zone control	<ul style="list-style-type: none">•
Car air purifier	<ul style="list-style-type: none">•

Air conditioning/refrigerator (continued)

In-cabin PM2.5 Filter	•
Negative ion generator	•

Passive safety

Driver/passenger airbag	Main •/Deputy •
Front/rear side airbags	Front •/Rear-
Front/rear head airbags (curtain airbags)	Front •/Rear •
Passive pedestrian protection	•

Wheel brake

Front Brake Type	Ventilation disc
Rear Brake Type	Disc
Parking brake type	Electronic Parking
Front Tire Size	265/45 R21
Rear Tire Size	265/45 R21
Spare Tire Size	Not full-size

Audio/Interior Lighting

Speaker Brand Name	•SONY Sony
Number of speakers	• 14 Horn
Interior ambient lighting	• 64 colors

Driving functions

Navigation traffic information display	•
Lane assist	•
Lane Keeping Assist System	•
Cruise control system	• Full speed adaptive cruise
Satellite navigation system	•
Driving assistance level	•L2
Rear Cross Traffic Alert	•
Road traffic sign recognition	•
Map Brand	• Gaud
Parking Assist	-

Exterior lighting

Low beam light source	•LED
------------------------------	------

Exterior lighting (continued)

High beam light source	•LED
LED daytime running lights	•
Adaptive high and low beam	•
Automatic headlights	•
Height-adjustable headlights	•
Headlight Delay Off	•

Exterior mirrors

Exterior mirror function	•Electric adjustment; •Electric folding; •Rearview mirror memory; •Rearview mirror heating; •Automatically turn down when reversing; •Automatically fold when locking the car
---------------------------------	---

Appearance/anti-theft

Rim material	• Aluminum alloy
Electric trunk	•
Electronic engine immobilizer	•
Central locking system in the car	•
Key Type	• Remote key; • Bluetooth key
Keyless start system	•
Keyless entry function	• Front row
Electric trunk position memory	•
Remote start function	•
Hidden electric door handle	•

Skylight/Glass

Sunroof Type	• Openable panoramic sunroof
Front/rear electric windows	Front •/Rear •
One-touch window lifting function	• Full car
Window anti-pinch function	•
Car makeup mirror	• Main driver's lamp; • co-pilot's lamp

Skylight/Glass (continued)

Rear wiper	<ul style="list-style-type: none">•
Rain sensor wiper function	<ul style="list-style-type: none">• Rainfall-sensing
Rear side privacy glass	<ul style="list-style-type: none">•
Side window multi-layer soundproof glass	<ul style="list-style-type: none">• Front row

Interior and exterior color

Exterior Color	Blue sky blue:#ADC7DE; Star diamond black:#000000; Atomic ash:#ABACB0; Star white:#FFFFFF; Star gray:#6A6E77; Danqing blue:#0B5D8C
Interior Color	Black:#000000; Black/Champagne Brown:#000000/#B88F61

Steering wheel/interior mirror

Steering Wheel Material	<ul style="list-style-type: none">• Leather
Steering wheel position adjustment	<ul style="list-style-type: none">• Manual up and down front and rear adjustment
Multi-function steering wheel	<ul style="list-style-type: none">•
Heated Steering Wheel	-
Steering wheel memory	-
Trip computer display screen	<ul style="list-style-type: none">• Color
Full LCD instrument panel	<ul style="list-style-type: none">•
LCD instrument size	<ul style="list-style-type: none">• 3.5 inches; • 9.2 inches; • 10.25 inches
Interior rearview mirror function	<ul style="list-style-type: none">• Manual anti-glare; • Streaming media
Gear shifting	<ul style="list-style-type: none">• Electronic gear shift

Intelligent configuration

Connected Car Services	<ul style="list-style-type: none">•
OTA Updates	<ul style="list-style-type: none">•
4G/5G Network	<ul style="list-style-type: none">•4G
Mobile APP remote function	<ul style="list-style-type: none">• Door control; • Vehicle start; • Air conditioning control; • Vehicle condition inquiry/diagnosis; • Vehicle location/vehicle search

Driving Control

Driving mode switch	<ul style="list-style-type: none">• Sport; • Economy; • Standard/Comfort
----------------------------	--

Driving Control (continued)

Automatic parking	•
Steep slope descent	•
Hill start assist	•

Driving Hardware

Front/rear parking radar	Front •/Rear •
Driving Assistance Camera System	• 360-degree panoramic image
Number of ultrasonic radars	• 6

In-car charging

Multimedia/charging port	•USB
Number of USB/Type-C ports	• 2 in the front row/2 in the back row
Mobile phone wireless charging function	• Front row

"●" = Standard equipment

"-" = Not available

"○" = Optional equipment.

Note: These are Chinese market vehicles. Warranty coverage is not available outside of China.