

Vehicle Detail Report

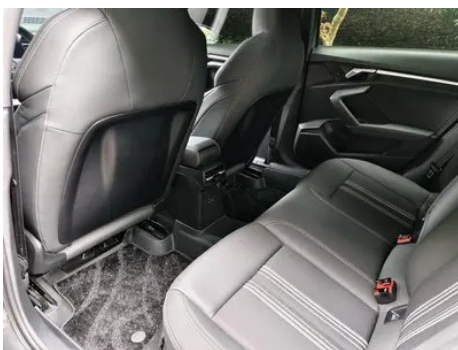
Audi A3 2024 A3L Limousine 35 TFSI Fashion Sport

Basic Information

| | |
|--------------------|------------|
| Brand | Audi |
| Mileage | 19,600 km |
| Color | Dark gray |
| First Registration | 2024-09-01 |
| Transfer Count | 0 |

Vehicle Images







Vehicle Condition

1. Original metal body panels with factory paint.

Configuration Information

Model Information

| | |
|--------------------|--|
| Model Name | Audi A3 2024 A3L Limousine 35 TFSI Fashion Sport |
| Launch Date | 2023.10 |

Basic parameters

| | |
|---|-------------------------|
| Vehicle Class | compact car |
| Energy Type | Gasoline |
| Maximum Power (kW) | 110 |
| Maximum Torque (N·m) | 250 |
| Transmission | 7-speed dry dual clutch |
| Body Type | Sedan |
| Engine | 1.4L 150 hp L4 |
| Dimensions (L×W×H) (mm) | 4554*1814*1429 |
| Official 0-100 km/h Acceleration (s) | 9.1 |
| Top Speed (km/h) | 200 |
| Curb Weight (kg) | 1420 |
| Maximum Gross Weight (kg) | 1880 |
| WLTP Combined Fuel Consumption (L/100km) | 6.32 |

engine

| | |
|-----------------------------|---------------|
| Engine Model | DLE |
| Displacement (mL) | 1395 |
| Displacement (L) | 1.4 |
| Induction Type | Turbocharging |
| Cylinder Arrangement | L |

engine (continued)

| | |
|--------------------------------|------------------|
| Number of Cylinders | 4 |
| Valves per Cylinder | 4 |
| Valve Train | DOHC |
| Maximum Power (PS) | 150 |
| Max Power Speed (rpm) | 5000-6000 |
| Max Torque Speed (rpm) | 1750-3000 |
| Maximum net power (kW) | 110 |
| Fuel Grade | 95. |
| Fuel Delivery System | Direct injection |
| Cylinder Head Material | Aluminum alloy |
| Cylinder Block Material | Aluminum alloy |
| Engine layout | Horizontal |

Screen/System

| | |
|--|--|
| Central control color screen | <ul style="list-style-type: none">• Touch LCD screen |
| Infotainment Screen Size | <ul style="list-style-type: none">• 10.1 inches |
| Bluetooth/In-car Phone | <ul style="list-style-type: none">• |
| Smartphone Integration/Mirroring | <ul style="list-style-type: none">• Apple CarPlay support;• OEM smartphone integration/mirroring |
| Voice recognition control system | <ul style="list-style-type: none">• Multimedia system;○ Navigation;• Telephone;• Air conditioning |
| Voice wake-up recognition by region | <ul style="list-style-type: none">• Dual Zone |
| In-vehicle intelligent system | <ul style="list-style-type: none">• Audi Connect |
| Touch screen vibration feedback | <ul style="list-style-type: none">• |
| App Store | <ul style="list-style-type: none">• |
| Voice assistant wake-up word | Hey Audi |

Body

| | |
|-------------------------|------|
| Length (mm) | 4554 |
| Width (mm) | 1814 |
| Height (mm) | 1429 |
| Wheelbase (mm) | 2680 |
| Front Track (mm) | 1543 |
| Rear Track (mm) | 1514 |

Body (continued)

| | |
|-------------------------------|------------|
| Door Opening Type | swing door |
| Number of Doors | 4 |
| Number of Seats | 5 |
| Fuel Tank Capacity (L) | 51 |
| Trunk volume (L) | 388 |
| Drag Coefficient (Cd) | - |
| Approach Angle (°) | 14 |
| Departure Angle (°) | 16 |

Gearbox

| | |
|--------------------------|------------------------------------|
| Abbreviation | 7-speed dry dual clutch |
| Number of Gears | 7 |
| Transmission Type | Dry Dual-Clutch Transmission (DCT) |

Chassis steering

| | |
|------------------------------|--------------------------------------|
| Drive Type | Front-engine, Front-wheel drive (FF) |
| Front Suspension Type | MacPherson independent suspension |
| Rear Suspension Type | Multi-link independent suspension |
| Power Steering Type | Electric power assistance |
| Vehicle structure | bearing type |

Seat Configuration

| | |
|--|---|
| Seat Material | <ul style="list-style-type: none">• Mix and match of leather/fabric;○ Mix and match of leather/suede materials (USD 882) |
| Main seat adjustment | <ul style="list-style-type: none">• Front and rear adjustment;• Backrest adjustment;• Height adjustment (4-way);• Leg rest adjustment;• Lumbar support (4-way) |
| Co-seat adjustment method | <ul style="list-style-type: none">• Front and rear adjustment;• Backrest adjustment;• Height adjustment (2-way);○ Height adjustment (4-way);• Leg rest adjustment;○ Lumbar support (4-way) |
| Electric adjustment of driver's seat and passenger seat | Main •/Subordinate ○ |
| Front seat functions | ○ Heating (USD 294) |
| Electric seat memory function | ○ Driving position |

Seat Configuration (continued)

| | |
|---|---------------------|
| Front passenger seat rear adjustable buttons | - |
| Rear seat folding | • Proportional down |
| Front/rear center armrest | Front •/Rear • |
| Rear cup holder | • |
| Sports style seats | • |

Active safety

| | |
|---|-----------------------|
| Anti-lock Braking System (ABS) | • |
| Electronic Brakeforce Distribution (EBD/CBC) | • |
| Brake Assist System (EBA/BAS/BA) | • |
| Traction Control System (ASR/TCS/TRC) | • |
| Electronic Stability Control (ESC/ESP/DSC) | • |
| Tire Pressure Monitoring System (TPMS) | • Tire pressure alarm |
| Seat Belt Reminder | • Full vehicle |
| ISOFIX Child Seat Anchors | • |
| Lane Departure Warning System (LDWS) | • |
| Autonomous Emergency Braking (AEB) | • |
| Driver Fatigue Detection | • |
| Forward Collision Warning (FCW) | • |
| Emergency Call System (eCall) | • |

Air conditioning/refrigerator

| | |
|--|------------------------------|
| Air conditioning temperature control method | • Automatic air conditioning |
| Rear Independent Climate Control | ○(USD 294) |
| Rear seat air vents | • |
| Temperature zone control | • |
| Car air purifier | - |
| In-cabin PM2.5 Filter | • |

Passive safety

| | |
|--|---------------------------------------|
| Driver/passenger airbag | Main •/Deputy • |
| Front/rear side airbags | Front/rear rear side airbag (USD 221) |
| Front/rear head airbags (curtain airbags) | Front •/Rear • |

Wheel brake

| | |
|-----------------------------|--------------------|
| Front Brake Type | Ventilation disc |
| Rear Brake Type | Disc |
| Parking brake type | Electronic Parking |
| Front Tire Size | 225/40 R18 |
| Rear Tire Size | 225/40 R18 |
| Spare Tire Size | Not full-size |
| Spare tire placement | In the trunk |

Audio/Interior Lighting

| | |
|----------------------------------|---|
| Speaker Brand Name | <input type="radio"/> Bang & Olufsen(USD 882) |
| Number of speakers | • 8 horns; <input type="radio"/> 14 horns |
| Interior ambient lighting | • 30 colors |
| Touch reading light | • |

Driving functions

| | |
|---|----------------------------------|
| Navigation traffic information display | <input type="radio"/> |
| Lane assist | <input type="radio/"/> (USD 235) |
| Lane Keeping Assist System | - |
| Cruise control system | • Full speed adaptive cruise |
| Satellite navigation system | <input type="radio/"/> (USD 956) |
| Rear Cross Traffic Alert | <input type="radio/"/> (USD 0) |
| Parking Assist | <input type="radio/"/> (USD 368) |

Exterior lighting

| | |
|-----------------------------------|-----------------------|
| Low beam light source | •LED |
| High beam light source | •LED |
| LED daytime running lights | • |
| Adaptive high and low beam | <input type="radio"/> |
| Automatic headlights | • |

Exterior lighting (continued)

| | |
|-------------------------------------|--|
| Height-adjustable headlights | <ul style="list-style-type: none">• |
| Headlight Delay Off | <ul style="list-style-type: none">• |
| Lighting features | <ul style="list-style-type: none">○ Matrix (USD 956) |
| Headlight rain and fog mode | <ul style="list-style-type: none">• |
| Headlight cleaning device | <ul style="list-style-type: none">○(USD 147) |

Exterior mirrors

| | |
|---------------------------------|---|
| Exterior mirror function | <ul style="list-style-type: none">• Electric adjustment; ○ Electric folding; ○ Memory of rearview mirror; • Heating of rearview mirror; ○ Automatic downward turning when reversing; ○ Automatic folding when locking the car; ○ Automatic anti-glare |
|---------------------------------|---|

Appearance/anti-theft

| | |
|--|--|
| Rim material | <ul style="list-style-type: none">• Aluminum alloy |
| Electronic engine immobilizer | <ul style="list-style-type: none">• |
| Central locking system in the car | <ul style="list-style-type: none">• |
| Key Type | <ul style="list-style-type: none">• Remote key |
| Keyless start system | <ul style="list-style-type: none">• |
| Keyless entry function | <ul style="list-style-type: none">○ Full vehicle (USD 294) |
| Appearance Kit | <ul style="list-style-type: none">• Sports style |
| Hands-free Trunk | <ul style="list-style-type: none">○(USD 294) |

Skylight/Glass

| | |
|--|---|
| Sunroof Type | <ul style="list-style-type: none">• Electric sunroof |
| Front/rear electric windows | Front •/Rear • |
| One-touch window lifting function | <ul style="list-style-type: none">• Full vehicle |
| Window anti-pinch function | <ul style="list-style-type: none">• |
| Car makeup mirror | <ul style="list-style-type: none">• Main driver's lamp; • co-pilot's lamp |
| Rear wiper | - |
| Rain sensor wiper function | <ul style="list-style-type: none">• Rainfall-sensing |

Interior and exterior color

Interior and exterior color (continued)

| | |
|-----------------------|---|
| Exterior Color | Gotland Green #001812 Glacier White #F6F6F6 Sky Cloud Gray #646464 Manganite Black #000000 Tango Red #9B1014 Kanas Green #A5B2A8 Camouflage green #254A31 Navarre Blue #011748 Hurricane Gray #281A11 |
| Interior Color | Black:#000000 |

Steering wheel/interior mirror

| | |
|---|---|
| Steering Wheel Material | • Leather |
| Steering wheel position adjustment | • Manual up and down front and rear adjustment |
| Multi-function steering wheel | • |
| Heated Steering Wheel | ○(USD 147) |
| Steering wheel memory | - |
| Trip computer display screen | • Color |
| Full LCD instrument panel | • |
| LCD instrument size | • 10.25 inches; ○ 12.3 inches (USD 294) |
| Interior rearview mirror function | • Manual anti-glare; ○ Automatic anti-glare (USD 221) |
| Gear shifting | • Electronic gear shift |
| HUD Head Up Digital Display | ○(USD 1,250) |
| ETC Device | ○(USD 74) |
| Steering Wheel Shift Paddles | • |

Intelligent configuration

| | |
|-------------------------------|-----|
| Connected Car Services | • |
| OTA Updates | - |
| 4G/5G Network | •4G |
| Wi-Fi hotspots | • |

Driving Control

| | |
|----------------------------|---|
| Driving mode switch | • Sport; ○ Economy; ○ Standard/Comfort; ○ Customization/Personalization |
| Automatic parking | • |
| Hill start assist | • |

Driving Control (continued)

| | |
|-------------------------------------|---|
| Engine start-stop technology | • |
|-------------------------------------|---|

Driving Hardware

| | |
|---|-------------------|
| Front/rear parking radar | Front •/Rear • |
| Driving Assistance Camera System | • Reversing image |
| Front perception camera | • Monocular |
| Number of cameras | • 2 |
| Number of ultrasonic radars | • 8; ○ 12 |

In-car charging

| | |
|-----------------------------------|--|
| Multimedia/charging port | •Type-C |
| Number of USB/Type-C ports | • 3 in the front row/2 in the back row |

"●" = Standard equipment

"-" = Not available

"○" = Optional equipment.

Note: These are Chinese market vehicles. Warranty coverage is not available outside of China.