

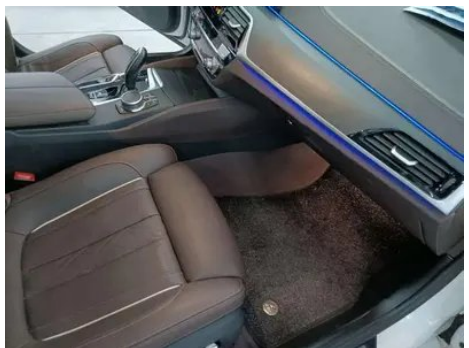
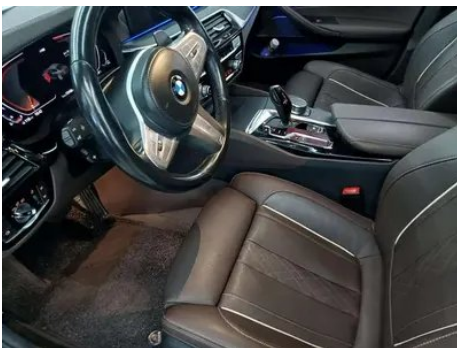
Vehicle Detail Report

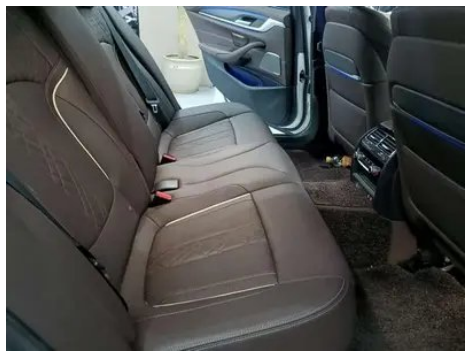
**BMW 5 Series 2022 Second change 530Li
Leading Type M Sports suit**

Basic Information

| | |
|--------------------|-------------------|
| Brand | BMW |
| Mileage | 73,000 km |
| Color | White |
| First Registration | 2023-02-01 |
| Transfer Count | 1 |

Vehicle Images







Vehicle Condition

1. Driver's seat rails and frame, Signs of removal. 2. Front passenger seat rails and frame, Signs of removal. 3. Left front wheel rim, Scrape. 4. Right front wheel rim, Scrape. 5. Left rear wheel rim, Scrape. 6. Right rear wheel rim, Scrape. 7. Left rear quarter panel, Paint repair, Body panel repair.

Configuration Information

Model Information

| | |
|--------------------|---|
| Model Name | BMW 5 Series 2022 Change 2 530Li Leading Type M Sports suit |
| Launch Date | 2022.08 |

Basic parameters

| | |
|---|---------------------------|
| Vehicle Class | Mid-size and large cars |
| Energy Type | Gasoline |
| Maximum Power (kW) | 185 |
| Maximum Torque (N·m) | 350 |
| Transmission | 8-gear manual integration |
| Body Type | Sedan |
| Engine | 2.0L 252 hp L4 |
| Dimensions (L×W×H) (mm) | 5106*1868*1500 |
| Official 0-100 km/h Acceleration (s) | 6.9 |
| Top Speed (km/h) | 250 |
| Curb Weight (kg) | 1710 |
| Maximum Gross Weight (kg) | 2260 |
| NEDC Combined Fuel Consumption (L/100km) | 6.7 |
| WLTP Combined Fuel Consumption (L/100km) | 7.4 |

engine

| | |
|--------------------------|---------|
| Engine Model | B48B20D |
| Displacement (mL) | 1998 |

engine (continued)

| | |
|--------------------------------|------------------|
| Displacement (L) | 2.0 |
| Induction Type | Turbocharging |
| Cylinder Arrangement | L |
| Number of Cylinders | 4 |
| Valves per Cylinder | 4 |
| Valve Train | DOHC |
| Maximum Power (PS) | 252 |
| Max Power Speed (rpm) | 5200-6500 |
| Max Torque Speed (rpm) | 1450-4800 |
| Maximum net power (kW) | 185 |
| Fuel Grade | 95. |
| Fuel Delivery System | Direct injection |
| Cylinder Head Material | Aluminum alloy |
| Cylinder Block Material | Aluminum alloy |
| Engine layout | Longitudinal |

Screen/System

| | |
|---|--|
| Central control color screen | <ul style="list-style-type: none">• Touch LCD screen |
| Infotainment Screen Size | <ul style="list-style-type: none">• 12.3 inches |
| Bluetooth/In-car Phone | <ul style="list-style-type: none">• |
| Smartphone Integration/Mirroring | <ul style="list-style-type: none">• Apple CarPlay support;• Baidu CarLife support |
| Voice recognition control system | <ul style="list-style-type: none">• Multimedia system;• Navigation;• Telephone;• Air conditioning |
| In-vehicle intelligent system | <ul style="list-style-type: none">• iDrive |
| Gesture Control | <ul style="list-style-type: none">○ |

Body

| | |
|--------------------------|------------|
| Length (mm) | 5106 |
| Width (mm) | 1868 |
| Height (mm) | 1500 |
| Wheelbase (mm) | 3105 |
| Front Track (mm) | 1598 |
| Rear Track (mm) | 1594 |
| Door Opening Type | swing door |

Body (continued)

| | |
|-------------------------------|----|
| Number of Doors | 4 |
| Number of Seats | 5 |
| Fuel Tank Capacity (L) | 68 |
| Trunk volume (L) | - |
| Drag Coefficient (Cd) | - |
| Approach Angle (°) | 17 |
| Departure Angle (°) | 18 |

Gearbox

| | |
|--------------------------|--|
| Abbreviation | 8-gear manual integration |
| Number of Gears | 8 |
| Transmission Type | Automatic Transmission with Manual Mode (AT) |

Chassis steering

| | |
|------------------------------|--|
| Drive Type | Front-engine, Rear-wheel drive (FR) |
| Front Suspension Type | Double wishbone independent suspension |
| Rear Suspension Type | Multi-link independent suspension |
| Power Steering Type | Electric power assistance |
| Vehicle structure | bearing type |

Seat Configuration

| | |
|--|--|
| Seat Material | <ul style="list-style-type: none">• Imitation leather |
| Main seat adjustment | <ul style="list-style-type: none">• Front and rear adjustment;• Backrest adjustment;• Height adjustment (4-way);○ Lumbar support (4-way)(USD 324) |
| Co-seat adjustment method | <ul style="list-style-type: none">• Front and rear adjustment;• Backrest adjustment;• Height adjustment (4-way);○ Lumbar support (4-way)(USD 324) |
| Electric adjustment of driver's seat and passenger seat | Main •/Deputy • |
| Front seat functions | <ul style="list-style-type: none">• Heating |
| Electric seat memory function | <ul style="list-style-type: none">• Driving position |
| Front passenger seat rear adjustable buttons | - |
| Front/rear center armrest | Front •/Rear • |
| Rear cup holder | <ul style="list-style-type: none">• |

Seat Configuration (continued)

| | |
|----------------------------------|-------------------------------|
| Second row seat functions | <input type="radio"/> Heating |
|----------------------------------|-------------------------------|

Active safety

| | |
|---|---|
| Anti-lock Braking System (ABS) | <ul style="list-style-type: none">• |
| Electronic Brakeforce Distribution (EBD/CBC) | <ul style="list-style-type: none">• |
| Brake Assist System (EBA/BAS/BA) | <ul style="list-style-type: none">• |
| Traction Control System (ASR/TCS/TRC) | <ul style="list-style-type: none">• |
| Electronic Stability Control (ESC/ESP/DSC) | <ul style="list-style-type: none">• |
| Tire Pressure Monitoring System (TPMS) | <ul style="list-style-type: none">• Tire pressure display |
| Seat Belt Reminder | <ul style="list-style-type: none">• Front row |
| ISOFIX Child Seat Anchors | <ul style="list-style-type: none">• |
| Lane Departure Warning System (LDWS) | - |
| Autonomous Emergency Braking (AEB) | <ul style="list-style-type: none">• |
| Driver Fatigue Detection | <ul style="list-style-type: none">• |
| Forward Collision Warning (FCW) | <ul style="list-style-type: none">• |
| Emergency Call System (eCall) | <ul style="list-style-type: none">• |
| Built-in Dashcam | <input type="radio"/> (USD 265) |

Air conditioning/refrigerator

| | |
|--|--|
| Air conditioning temperature control method | <ul style="list-style-type: none">• Automatic air conditioning |
| Rear Independent Climate Control | <input type="radio"/> |
| Rear seat air vents | <ul style="list-style-type: none">• |
| Temperature zone control | <ul style="list-style-type: none">• |
| Car air purifier | - |
| In-cabin PM2.5 Filter | <ul style="list-style-type: none">• |

Passive safety

| | |
|--------------------------------|--|
| Driver/passenger airbag | Main <ul style="list-style-type: none">• /Deputy <ul style="list-style-type: none">• |
| Front/rear side airbags | Front <ul style="list-style-type: none">• /Rear- |

Passive safety (continued)

| | |
|--|----------------|
| Front/rear head airbags (curtain airbags) | Front •/Rear • |
| Run-flat tires | • |
| Passive pedestrian protection | • |

Wheel brake

| | |
|---------------------------|--------------------|
| Front Brake Type | Ventilation disc |
| Rear Brake Type | Ventilation disc |
| Parking brake type | Electronic Parking |
| Front Tire Size | 245/40 R19 |
| Rear Tire Size | 275/35 R19 |
| Spare Tire Size | None |

Audio/Interior Lighting

| | |
|----------------------------------|---|
| Speaker Brand Name | <input type="radio"/> Harman/Kardon Harman Kardon |
| Number of speakers | • 12 horns; <input type="radio"/> 16 horns |
| Interior ambient lighting | • 11 colors |

Driving functions

| | |
|---|---|
| Navigation traffic information display | • |
| Lane assist | <input type="radio"/> |
| Lane Keeping Assist System | - |
| Cruise control system | • Cruise control; <input type="radio"/> Adaptive cruise |
| Satellite navigation system | • |
| Rear Cross Traffic Alert | <input type="radio"/> |
| Road traffic sign recognition | <input type="radio"/> |
| Tracking reverse | <input type="radio"/> |
| Parking Assist | <input type="radio"/> |

Exterior lighting

| | |
|-----------------------------------|------|
| Low beam light source | •LED |
| High beam light source | •LED |
| LED daytime running lights | • |
| Adaptive high and low beam | • |

Exterior lighting (continued)

| | |
|-------------------------------------|---|
| Automatic headlights | • |
| Height-adjustable headlights | • |
| Headlight Delay Off | • |
| Turn signal lamp | • |

Exterior mirrors

| | |
|---------------------------------|---|
| Exterior mirror function | • Electric adjustment; • Electric folding; • Mirror memory function; • Heated mirrors; • Automatic downfolding on reverse; • Automatic folding upon locking; ○ Auto-dimming (USD 368) |
|---------------------------------|---|

Appearance/anti-theft

| | |
|--|------------------------------|
| Rim material | • Aluminum alloy |
| Electric trunk | • |
| Electronic engine immobilizer | • |
| Central locking system in the car | • |
| Key Type | • Remote key; • NFC/RFID key |
| Keyless start system | • |
| Keyless entry function | • Full vehicle |
| Appearance Kit | • Sports style |
| Hands-free Trunk | • |
| Remote start function | • |
| Active closed grille | • |

Skylight/Glass

| | |
|--|---|
| Sunroof Type | • Sectional electric sunroof |
| Front/rear electric windows | Front •/Rear • |
| One-touch window lifting function | • Full vehicle |
| Window anti-pinch function | • |
| Car makeup mirror | • Driver's side ambient light; • Passenger-side ambient light; • Rear-row ambient light |
| Rear wiper | - |
| Rain sensor wiper function | • Rainfall-sensing |

Skylight/Glass (continued)

| | |
|------------------------|--------------|
| Starry skylight | ○(USD 1,471) |
|------------------------|--------------|

Interior and exterior color

| | |
|-----------------------|---|
| Exterior Color | Carbon black:#232A30; Gem green:#242224; Fragrant red:#810B17; Cashmi silver:#C6C1B4; Ore white:#E7E7E7; Quantum blue:#273F7C |
| Interior Color | Black/Volcano Red: #000000/#8A3D47; Black: #000000; Black/Cognac: #000000/#78593D; Black/Mocha: #000000/#423534 |

Steering wheel/interior mirror

| | |
|---|--|
| Steering Wheel Material | • Leather |
| Steering wheel position adjustment | • Electric up and down front and rear adjustment |
| Multi-function steering wheel | • |
| Heated Steering Wheel | - |
| Steering wheel memory | • |
| Trip computer display screen | • Color |
| Full LCD instrument panel | • |
| LCD instrument size | • 12.3 inches |
| Interior rearview mirror function | • Automatic anti-glare |
| Gear shifting | • Electronic gear shift |
| HUD Head Up Digital Display | ○(USD 1,706) |
| Steering Wheel Shift Paddles | • |

Intelligent configuration

| | |
|-----------------------------------|--|
| Connected Car Services | • |
| OTA Updates | • |
| 4G/5G Network | •4G |
| Mobile APP remote function | • Door control; • Vehicle start; • Climate control; • Vehicle status check/diagnostics; • Vehicle location / find my car |
| Wi-Fi hotspots | • |

Driving Control

Driving Control (continued)

| | |
|-------------------------------------|--|
| Driving mode switch | • Sport; • Economy; • Standard/Comfort |
| Automatic parking | • |
| Hill start assist | • |
| Engine start-stop technology | • |

Driving Hardware

| | |
|---|---|
| Front/rear parking radar | Front •/Rear • |
| Driving Assistance Camera System | • Reversing image; ○ 360-degree panoramic image |

In-car charging

| | |
|--|--|
| Multimedia/charging port | •USB;•Type-C |
| Number of USB/Type-C ports | • 2 in the front row/2 in the back row |
| Mobile phone wireless charging function | • Front row |

Optional Package

| | |
|-------------------------|---|
| Optional Package | Winter suit (6000 yuan Contains Front and rear seat heating function Advanced four-zone automatic air conditioning) Comfortable Suit (8500 yuan Contains Driver's exterior rearview mirror with automatic anti-glare function Automatic parking assist system Plus) Driving assistance package (11000 yuan Contains Active Cruise Control System Automatic parking assist system) |
|-------------------------|---|

"●" = Standard equipment

"_" = Not available

"○" = Optional equipment.

Note: These are Chinese market vehicles. Warranty coverage is not available outside of China.