

Vehicle Detail Report

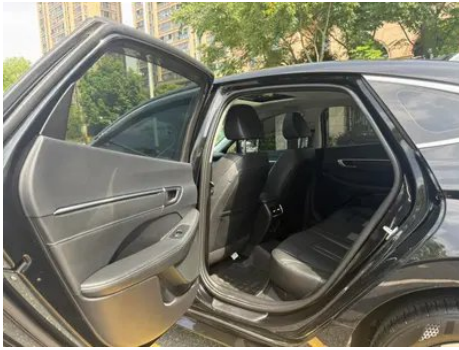
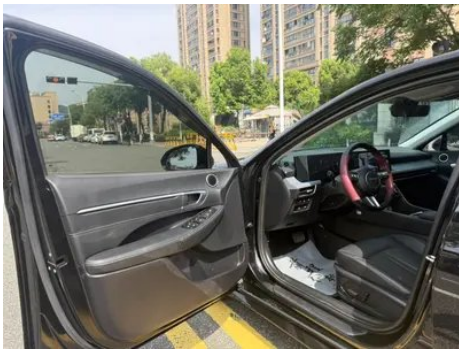
Hyundai Sonata 2024 1.5T Pro

Basic Information

Brand	Hyundai
Mileage	22,000 km
Color	Black
First Registration	2025-01-01
Transfer Count	0

Vehicle Images







Vehicle Condition

1. Original metal body panels with factory paint.

Configuration Information

Model Information

Model Name	Hyundai Sonata 2024 1.5T Pro
Launch Date	2024.03

Basic parameters

Vehicle Class	Mid-size car
Energy Type	Gasoline
Maximum Power (kW)	125
Maximum Torque (N·m)	253
Transmission	8-gear manual integration
Body Type	Sedan
Engine	1.5T 170 horsepower L4
Dimensions (L×W×H) (mm)	4945*1860*1445
Official 0-100 km/h Acceleration (s)	-
Top Speed (km/h)	210
Curb Weight (kg)	1482
Maximum Gross Weight (kg)	1960
WLTP Combined Fuel Consumption (L/100km)	6.25

engine

Engine Model	G4FS
Displacement (mL)	1497
Displacement (L)	1.5
Induction Type	Turbocharging
Cylinder Arrangement	L
Number of Cylinders	4

engine (continued)

Valves per Cylinder	4
Valve Train	DOHC
Maximum Power (PS)	170
Max Power Speed (rpm)	5500
Max Torque Speed (rpm)	1500-4000
Maximum net power (kW)	125
Fuel Grade	92.
Fuel Delivery System	Direct injection
Cylinder Head Material	Aluminum alloy
Cylinder Block Material	Aluminum alloy
Engine layout	Horizontal
Engine-specific technologies	CVVD

Screen/System

Central control color screen	<ul style="list-style-type: none">• Touch LCD screen
Infotainment Screen Size	<ul style="list-style-type: none">• 12.3 inches
Bluetooth/In-car Phone	<ul style="list-style-type: none">•
Smartphone Integration/Mirroring	<ul style="list-style-type: none">• Support CarPlay;• Support CarLife
Voice recognition control system	<ul style="list-style-type: none">•
Voice wake-up recognition by region	<ul style="list-style-type: none">• Dual Zone
In-vehicle intelligent system	<ul style="list-style-type: none">•Bluelink
Voice assistant wake-up word	Hello, modern.

Body

Length (mm)	4945
Width (mm)	1860
Height (mm)	1445
Wheelbase (mm)	2875
Front Track (mm)	1623
Rear Track (mm)	1630
Door Opening Type	swing door
Number of Doors	4

Body (continued)

Number of Seats	5
Fuel Tank Capacity (L)	60
Trunk volume (L)	480
Drag Coefficient (Cd)	0.27
Approach Angle (°)	14
Departure Angle (°)	18
Ground Clearance (mm)	110

Gearbox

Abbreviation	8-gear manual integration
Number of Gears	8
Transmission Type	Automatic Transmission with Manual Mode (AT)

Chassis steering

Drive Type	Front-engine, Front-wheel drive (FF)
Front Suspension Type	MacPherson independent suspension
Rear Suspension Type	Multi-link independent suspension
Power Steering Type	Electric power assistance
Vehicle structure	bearing type

Seat Configuration

Seat Material	<ul style="list-style-type: none">• Imitation leather
Main seat adjustment	<ul style="list-style-type: none">• Front and rear adjustment;• Backrest adjustment;• Height adjustment (4-way)
Co-seat adjustment method	<ul style="list-style-type: none">• Front and rear adjustment;• Backrest adjustment
Electric adjustment of driver's seat and passenger seat	Main •/Deputy •
Front seat functions	<ul style="list-style-type: none">• Heating
Front passenger seat rear adjustable buttons	-
Front/rear center armrest	Front •/Rear •
Rear cup holder	<ul style="list-style-type: none">•

Active safety

Anti-lock Braking System (ABS)	<ul style="list-style-type: none">•
---------------------------------------	---

Active safety (continued)

Electronic Brakeforce Distribution (EBD/CBC)	•
Brake Assist System (EBA/BAS/BA)	•
Traction Control System (ASR/TCS/TRC)	•
Electronic Stability Control (ESC/ESP/DSC)	•
Tire Pressure Monitoring System (TPMS)	• Tire pressure display
Seat Belt Reminder	• Full car
ISOFIX Child Seat Anchors	•
Lane Departure Warning System (LDWS)	•
Autonomous Emergency Braking (AEB)	•
Driver Fatigue Detection	•
Forward Collision Warning (FCW)	•
Emergency Call System (eCall)	•

Air conditioning/refrigerator

Air conditioning temperature control method	• Automatic air conditioning
Rear Independent Climate Control	-
Rear seat air vents	•
Temperature zone control	•
Car air purifier	•
In-cabin PM2.5 Filter	•

Passive safety

Driver/passenger airbag	Main •/Deputy •
Front/rear side airbags	Front •/Rear-
Front/rear head airbags (curtain airbags)	Front •/Rear •

Wheel brake

Front Brake Type	Ventilation disc
Rear Brake Type	Disc

Wheel brake (continued)

Parking brake type	Electronic Parking
Front Tire Size	215/55 R17
Rear Tire Size	215/55 R17
Spare Tire Size	Not full-size
Spare tire placement	In the trunk

Audio/Interior Lighting

Number of speakers	• 8 speakers
Interior ambient lighting	• 64 colors

Driving functions

Navigation traffic information display	•
Lane assist	-
Lane Keeping Assist System	•
Cruise control system	• Full speed adaptive cruise
Satellite navigation system	•
Driving assistance level	•L2
Lane centering	•
Road traffic sign recognition	•
Map Brand	• Baidu
Driver assistance systems	•Hyundai Smart Sense
Start reminder	•
Parking Assist	-
Lane Change Assist	•
Automatic Ramp Entry/Exit Assist	•
Highway sections	• Expressway section

Exterior lighting

Low beam light source	•LED
High beam light source	•LED
LED daytime running lights	•
Adaptive high and low beam	•
Automatic headlights	•

Exterior lighting (continued)

Height-adjustable headlights	<ul style="list-style-type: none">•
Headlight Delay Off	<ul style="list-style-type: none">•

Exterior mirrors

Exterior mirror function	<ul style="list-style-type: none">• Electric adjustment;• Electric folding;• Rearview mirror heating;• Automatic folding when locked
---------------------------------	---

Appearance/anti-theft

Rim material	<ul style="list-style-type: none">• Aluminum alloy
Electric trunk	-
Electronic engine immobilizer	<ul style="list-style-type: none">•
Central locking system in the car	<ul style="list-style-type: none">•
Key Type	<ul style="list-style-type: none">• Remote key
Keyless start system	<ul style="list-style-type: none">•
Keyless entry function	<ul style="list-style-type: none">• Front row
Hands-free Trunk	<ul style="list-style-type: none">•
Remote start function	<ul style="list-style-type: none">•

Skylight/Glass

Sunroof Type	<ul style="list-style-type: none">• Electric skylight; ○ Panoramic skylight (USD 515) can be opened
Front/rear electric windows	Front •/Rear •
One-touch window lifting function	<ul style="list-style-type: none">• Full car
Window anti-pinch function	<ul style="list-style-type: none">•
Car makeup mirror	<ul style="list-style-type: none">• Main driver's lamp;• co-pilot's lamp
Rear wiper	-

Interior and exterior color

Exterior Color	Phantom Black:#010101; Morning blue:#4671C8; Polar white:#F5F5FA; Aurora Silver:#C8C8C8
Interior Color	Obsidian Night Black:#000000; Shu Ya Grey:#969696

Steering wheel/interior mirror

Steering Wheel Material	<ul style="list-style-type: none">• Leather
--------------------------------	---

Steering wheel/interior mirror (continued)

Steering wheel position adjustment	<ul style="list-style-type: none">• Manual up and down front and rear adjustment
Multi-function steering wheel	<ul style="list-style-type: none">•
Heated Steering Wheel	-
Steering wheel memory	-
Trip computer display screen	<ul style="list-style-type: none">• Color
Full LCD instrument panel	<ul style="list-style-type: none">•
LCD instrument size	<ul style="list-style-type: none">• 12.3 inches
Interior rearview mirror function	<ul style="list-style-type: none">• Manual anti-glare
Gear shifting	<ul style="list-style-type: none">• Rotary electronic gear selector
ETC Device	○(USD 147)
Steering Wheel Shift Paddles	<ul style="list-style-type: none">•

Intelligent configuration

Connected Car Services	<ul style="list-style-type: none">•
OTA Updates	<ul style="list-style-type: none">•
4G/5G Network	<ul style="list-style-type: none">•4G
Mobile APP remote function	<ul style="list-style-type: none">• Door control; • Vehicle start; • Lamp control; • Vehicle condition inquiry/diagnosis
Wi-Fi hotspots	<ul style="list-style-type: none">•

Driving Control

Driving mode switch	<ul style="list-style-type: none">• Sport; • Economy; • Standard/Comfort; • Customization/Personalization
Automatic parking	<ul style="list-style-type: none">•
Hill start assist	<ul style="list-style-type: none">•
Engine start-stop technology	<ul style="list-style-type: none">•

Driving Hardware

Front/rear parking radar	Front •/Rear •
Driving Assistance Camera System	<ul style="list-style-type: none">• Reversing image
Front perception camera	<ul style="list-style-type: none">• Monocular
Number of cameras	<ul style="list-style-type: none">• 2

Driving Hardware (continued)

Number of ultrasonic radars	•8 pieces
Millimeter wave radar quantity	• 1

In-car charging

Multimedia/charging port	•Type-C
Number of USB/Type-C ports	• 2 in the front row/2 in the back row
Mobile phone wireless charging function	• Front row

"●" = Standard equipment

"-" = Not available

"○" = Optional equipment.

Note: These are Chinese market vehicles. Warranty coverage is not available outside of China.