

# Vehicle Detail Report

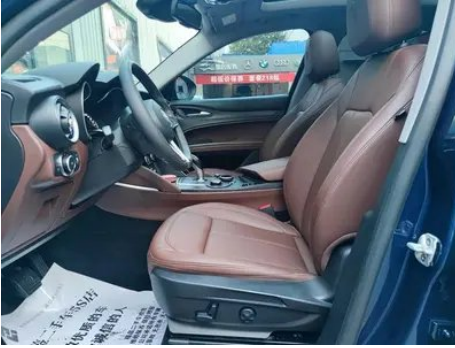
## Alfa Romeo Stelvio 2017 2.0T 200HP Luxury Edition

### Basic Information

Brand	Alfa Romeo
Mileage	69,000 km
Color	Blue
First Registration	2019-02-01
Transfer Count	0

### Vehicle Images





## Vehicle Condition

1. Right rear quarter panel, Deformation.

## Configuration Information

### Model Information

<b>Model Name</b>	Alfa Romeo Stelvio 2017 2.0T 200HP Luxury Edition
<b>Launch Date</b>	2017.06

### Basic parameters

<b>Vehicle Class</b>	Mid-size SUV
<b>Energy Type</b>	Gasoline
<b>Maximum Power (kW)</b>	147
<b>Maximum Torque (N·m)</b>	330

## Basic parameters (continued)

<b>Transmission</b>	8-gear manual integration
<b>Body Type</b>	SUV
<b>Engine</b>	2.0T 200 horsepower L4
<b>Dimensions (L×W×H) (mm)</b>	4687*1903*1688
<b>Official 0-100 km/h Acceleration (s)</b>	7.2
<b>Top Speed (km/h)</b>	214
<b>Curb Weight (kg)</b>	1874
<b>Maximum Gross Weight (kg)</b>	-
<b>NEDC Combined Fuel Consumption (L/100km)</b>	7.9

## engine

<b>Engine Model</b>	-
<b>Displacement (mL)</b>	1995
<b>Displacement (L)</b>	2.0
<b>Induction Type</b>	Turbocharging
<b>Cylinder Arrangement</b>	L
<b>Number of Cylinders</b>	4
<b>Valves per Cylinder</b>	4
<b>Valve Train</b>	SOHC
<b>Maximum Power (PS)</b>	200
<b>Max Power Speed (rpm)</b>	-
<b>Max Torque Speed (rpm)</b>	1750
<b>Maximum net power (kW)</b>	-
<b>Fuel Grade</b>	92.
<b>Fuel Delivery System</b>	Direct injection
<b>Cylinder Head Material</b>	Aluminum alloy
<b>Cylinder Block Material</b>	Aluminum alloy
<b>Engine layout</b>	Longitudinal
<b>Engine-specific technologies</b>	MultiAir

## Screen/System

<b>Central control color screen</b>	<ul style="list-style-type: none"><li>• Ordinary LCD screen</li></ul>
-------------------------------------	---

## Screen/System (continued)

<b>Infotainment Screen Size</b>	•6.5 inches; ○8.8 inches
<b>Bluetooth/In-car Phone</b>	•
<b>Voice recognition control system</b>	• Multimedia system; • Telephone

## Body

<b>Length (mm)</b>	4687
<b>Width (mm)</b>	1903
<b>Height (mm)</b>	1688
<b>Wheelbase (mm)</b>	2818
<b>Front Track (mm)</b>	1612
<b>Rear Track (mm)</b>	1649
<b>Door Opening Type</b>	swing door
<b>Number of Doors</b>	5
<b>Number of Seats</b>	5
<b>Fuel Tank Capacity (L)</b>	64
<b>Trunk volume (L)</b>	499-1600
<b>Drag Coefficient (Cd)</b>	-

## Gearbox

<b>Abbreviation</b>	8-gear manual integration
<b>Number of Gears</b>	8
<b>Transmission Type</b>	Automatic Transmission with Manual Mode (AT)

## Chassis steering

<b>Drive Type</b>	Front-engine, All-wheel drive (F-AWD)
<b>Four-wheel drive</b>	Full-time four-wheel drive
<b>Central differential structure</b>	Multi-plate clutch
<b>Front Suspension Type</b>	Double wishbone independent suspension
<b>Rear Suspension Type</b>	Multi-link independent suspension
<b>Power Steering Type</b>	Electric power assistance
<b>Vehicle structure</b>	bearing type

## Seat Configuration

<b>Seat Material</b>	• Leather
----------------------	-----------

## Seat Configuration (continued)

<b>Main seat adjustment</b>	<ul style="list-style-type: none"><li>• Front and rear adjustment;</li><li>• Backrest adjustment;</li><li>• Height adjustment (2-way);</li><li>• Lumbar support (4-way)</li></ul>
<b>Co-seat adjustment method</b>	<ul style="list-style-type: none"><li>• Front and rear adjustment;</li><li>• Backrest adjustment;</li><li>• Height adjustment (2-way);</li><li>• Lumbar support (4-way)</li></ul>
<b>Electric adjustment of driver's seat and passenger seat</b>	Main •/Deputy •
<b>Front seat functions</b>	<ul style="list-style-type: none"><li>• Heating</li></ul>
<b>Electric seat memory function</b>	<ul style="list-style-type: none"><li>• Driving position</li></ul>
<b>Front passenger seat rear adjustable buttons</b>	-
<b>Rear seat folding</b>	<ul style="list-style-type: none"><li>• Proportional down</li></ul>
<b>Front/rear center armrest</b>	Front •/Rear •
<b>Rear cup holder</b>	<ul style="list-style-type: none"><li>•</li></ul>

## Active safety

<b>Anti-lock Braking System (ABS)</b>	<ul style="list-style-type: none"><li>•</li></ul>
<b>Electronic Brakeforce Distribution (EBD/CBC)</b>	<ul style="list-style-type: none"><li>•</li></ul>
<b>Brake Assist System (EBA/BAS/BA)</b>	<ul style="list-style-type: none"><li>•</li></ul>
<b>Traction Control System (ASR/TCS/TRC)</b>	<ul style="list-style-type: none"><li>•</li></ul>
<b>Electronic Stability Control (ESC/ESP/DSC)</b>	<ul style="list-style-type: none"><li>•</li></ul>
<b>Tire Pressure Monitoring System (TPMS)</b>	<ul style="list-style-type: none"><li>• Tire pressure display</li></ul>
<b>Seat Belt Reminder</b>	<ul style="list-style-type: none"><li>• Full car</li></ul>
<b>ISOFIX Child Seat Anchors</b>	<ul style="list-style-type: none"><li>•</li></ul>
<b>Lane Departure Warning System (LDWS)</b>	○
<b>Autonomous Emergency Braking (AEB)</b>	○
<b>Driver Fatigue Detection</b>	-

## Air conditioning/refrigerator

## Air conditioning/refrigerator (continued)

<b>Air conditioning temperature control method</b>	• Automatic air conditioning
<b>Rear Independent Climate Control</b>	-
<b>Rear seat air vents</b>	•
<b>Temperature zone control</b>	•
<b>Car air purifier</b>	-
<b>In-cabin PM2.5 Filter</b>	•

## Passive safety

<b>Driver/passenger airbag</b>	Main •/Deputy •
<b>Front/rear side airbags</b>	Front •/Rear-
<b>Front/rear head airbags (curtain airbags)</b>	Front •/Rear •

## Wheel brake

<b>Front Brake Type</b>	Ventilation disc
<b>Rear Brake Type</b>	Ventilation disc
<b>Parking brake type</b>	Electronic Parking
<b>Front Tire Size</b>	235/55 R19
<b>Rear Tire Size</b>	235/55 R19
<b>Spare Tire Size</b>	Not full-size

## Audio/Interior Lighting

<b>Speaker Brand Name</b>	<input type="radio"/> Harman/Kardon Harman Kardon
<b>Number of speakers</b>	• 8 horns; <input type="radio"/> 14 horns
<b>Interior ambient lighting</b>	• Monochrome

## Driving functions

<b>Navigation traffic information display</b>	-
<b>Lane assist</b>	-
<b>Lane Keeping Assist System</b>	-
<b>Cruise control system</b>	• Cruise control; <input type="radio"/> Adaptive cruise
<b>Satellite navigation system</b>	-
<b>Parking Assist</b>	-

## Exterior lighting

<b>Low beam light source</b>	• Xenon
------------------------------	---------

## Exterior lighting (continued)

<b>High beam light source</b>	<ul style="list-style-type: none"><li>• Xenon</li></ul>
<b>LED daytime running lights</b>	<ul style="list-style-type: none"><li>•</li></ul>
<b>Adaptive high and low beam</b>	<ul style="list-style-type: none"><li>○</li></ul>
<b>Automatic headlights</b>	<ul style="list-style-type: none"><li>•</li></ul>
<b>Height-adjustable headlights</b>	<ul style="list-style-type: none"><li>•</li></ul>
<b>Headlight Delay Off</b>	<ul style="list-style-type: none"><li>•</li></ul>
<b>Headlight cleaning device</b>	<ul style="list-style-type: none"><li>•</li></ul>

## Exterior mirrors

<b>Exterior mirror function</b>	<ul style="list-style-type: none"><li>• Electric adjustment;</li><li>• Electric folding;</li><li>• Rearview mirror memory;</li><li>• Rearview mirror heating;</li><li>• Automatic folding when locked</li></ul>
---------------------------------	---

## Appearance/anti-theft

<b>Rim material</b>	<ul style="list-style-type: none"><li>• Aluminum alloy</li></ul>
<b>Electric trunk</b>	<ul style="list-style-type: none"><li>•</li></ul>
<b>Electronic engine immobilizer</b>	<ul style="list-style-type: none"><li>•</li></ul>
<b>Central locking system in the car</b>	<ul style="list-style-type: none"><li>•</li></ul>
<b>Key Type</b>	<ul style="list-style-type: none"><li>• Remote key</li></ul>
<b>Keyless start system</b>	<ul style="list-style-type: none"><li>•</li></ul>
<b>Keyless entry function</b>	<ul style="list-style-type: none"><li>• Front row</li></ul>
<b>Electric trunk position memory</b>	<ul style="list-style-type: none"><li>•</li></ul>
<b>Roof rack</b>	<ul style="list-style-type: none"><li>•</li></ul>

## Skylight/Glass

<b>Sunroof Type</b>	<ul style="list-style-type: none"><li>• Openable panoramic sunroof</li></ul>
<b>Front/rear electric windows</b>	Front •/Rear •
<b>One-touch window lifting function</b>	<ul style="list-style-type: none"><li>• Full car</li></ul>
<b>Window anti-pinch function</b>	<ul style="list-style-type: none"><li>•</li></ul>
<b>Car makeup mirror</b>	<ul style="list-style-type: none"><li>• Main driver's lamp;</li><li>• co-pilot's lamp</li></ul>
<b>Rear wiper</b>	<ul style="list-style-type: none"><li>•</li></ul>

## Skylight/Glass (continued)

<b>Rain sensor wiper function</b>	<ul style="list-style-type: none"><li>• Rainfall-sensing</li></ul>
<b>Rear side privacy glass</b>	<ul style="list-style-type: none"><li>•</li></ul>

## Interior and exterior color

<b>Exterior Color</b>	Monte Carlo blue:#1B3361; Alpha white:#FFFFFF; Alpha red:#700C2E; Volcanic black:#262626; Racing red:#880000; Wilderness brown:#514640; Stromboli volcanic ash:#717479; Vesuvius ash:#626163; Imola titanium ash:#76716D; Silver lime:#7F7E83; Track white:#E1E1E1
<b>Interior Color</b>	Black/Brown:#000000/#CB7C55; Black:#000000

## Steering wheel/interior mirror

<b>Steering Wheel Material</b>	<ul style="list-style-type: none"><li>• Leather</li></ul>
<b>Steering wheel position adjustment</b>	<ul style="list-style-type: none"><li>• Manual up and down front and rear adjustment</li></ul>
<b>Multi-function steering wheel</b>	<ul style="list-style-type: none"><li>•</li></ul>
<b>Heated Steering Wheel</b>	<ul style="list-style-type: none"><li>•</li></ul>
<b>Steering wheel memory</b>	-
<b>Trip computer display screen</b>	<ul style="list-style-type: none"><li>• Color</li></ul>
<b>Full LCD instrument panel</b>	-
<b>LCD instrument size</b>	<ul style="list-style-type: none"><li>• 7 inches</li></ul>
<b>Interior rearview mirror function</b>	<ul style="list-style-type: none"><li>• Automatic anti-glare</li></ul>
<b>Steering Wheel Shift Paddles</b>	○

## Intelligent configuration

<b>Connected Car Services</b>	-
<b>OTA Updates</b>	-

## Driving Control

<b>Driving mode switch</b>	<ul style="list-style-type: none"><li>• Sport; • Economy; • Standard/Comfort</li></ul>
<b>Automatic parking</b>	-
<b>Steep slope descent</b>	<ul style="list-style-type: none"><li>•</li></ul>
<b>Hill start assist</b>	<ul style="list-style-type: none"><li>•</li></ul>

## Driving Control (continued)

<b>Variable suspension function</b>	• Soft and hard adjustment of suspension
<b>Variable steering ratio</b>	•
<b>Engine start-stop technology</b>	•

## Driving Hardware

<b>Front/rear parking radar</b>	Front •/Rear •
<b>Driving Assistance Camera System</b>	• Reversing image

## In-car charging

<b>Multimedia/charging port</b>	•USB;•AUX
<b>Number of USB/Type-C ports</b>	• 2 in the front row/2 in the back row
<b>Luggage compartment 12V power socket</b>	•

---

"●" = Standard equipment

"\_" = Not available

"○" = Optional equipment.

Note: These are Chinese market vehicles. Warranty coverage is not available outside of China.