

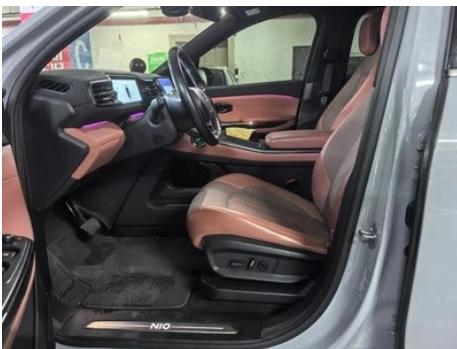
# Vehicle Detail Report

Weilai EC6 2020 440KM Performance version

## Basic Information

Brand	<b>NIO</b>
Mileage	<b>88,300 km</b>
Color	<b>Silver-gray</b>
First Registration	<b>2021-02-01</b>
Transfer Count	<b>1</b>

## Vehicle Images







## Vehicle Condition

1. Severe wear.

## Configuration Information

### Model Information

<b>Model Name</b>	Weilai EC6 2020 440KM Performance version
<b>Launch Date</b>	2020.07

### Basic parameters

<b>Vehicle Class</b>	Mid-size SUV
<b>Energy Type</b>	Battery Electric Vehicle (BEV)
<b>Maximum Power (kW)</b>	400
<b>Maximum Torque (N·m)</b>	725
<b>Body Type</b>	SUV Crossover
<b>Dimensions (L×W×H) (mm)</b>	4850*1965*1714
<b>Official 0-100 km/h Acceleration (s)</b>	4.5
<b>Top Speed (km/h)</b>	200
<b>Curb Weight (kg)</b>	2299
<b>Maximum Gross Weight (kg)</b>	2799
<b>NEDC Electric Range (km)</b>	440
<b>Fast Charging Time (h)</b>	0.7
<b>Slow Charging Time (h)</b>	10
<b>Electric Motor (PS)</b>	544
<b>Fast Charging Range (%)</b>	80
<b>Electricity Consumption in Fuel Equivalent (L/100km)</b>	2

### Electric Motor

<b>Motor Type</b>	Front permanent magnet/ synchronous rear AC/asynchronous
-------------------	---

## Electric Motor (continued)

<b>Total Electric Motor Power (kW)</b>	400
<b>Total Electric Motor Torque (N·m)</b>	725
<b>Front Electric Motor Max Power (kW)</b>	160
<b>Number of drive motors</b>	Dual motors
<b>Motor Layout</b>	Front-mounted Rear-mounted
<b>Battery Type</b>	Ternary lithium battery
<b>Battery Capacity (kWh)</b>	70
<b>Total Electric Motor Power (PS)</b>	544
<b>Rear Electric Motor Max Power (kW)</b>	240
<b>Battery Cell Brand</b>	Contemporary Amperex Technology Co. Limited (Jiangsu Times)
<b>Battery Cooling System</b>	Liquid cooling
<b>Battery energy density (Wh/kg)</b>	135.65
<b>Power consumption per 100 kilometers (kWh/100km)</b>	17.4
<b>Fast charging function</b>	Support
<b>Battery Replacement</b>	Support

## Screen/System

<b>Central control color screen</b>	<ul style="list-style-type: none"><li>• Touch LCD screen</li></ul>
<b>Infotainment Screen Size</b>	<ul style="list-style-type: none"><li>• 11.3 inches</li></ul>
<b>Bluetooth/In-car Phone</b>	<ul style="list-style-type: none"><li>•</li></ul>
<b>Voice recognition control system</b>	<ul style="list-style-type: none"><li>• Multimedia system;</li><li>• Navigation;</li><li>• Telephone;</li><li>• Air conditioning</li></ul>

## Body

<b>Length (mm)</b>	4850
<b>Width (mm)</b>	1965
<b>Height (mm)</b>	1714
<b>Wheelbase (mm)</b>	2900
<b>Front Track (mm)</b>	1668
<b>Rear Track (mm)</b>	1672

## Body (continued)

<b>Door Opening Type</b>	swing door
<b>Number of Doors</b>	5
<b>Number of Seats</b>	5
<b>Trunk volume (L)</b>	510-1405
<b>Drag Coefficient (Cd)</b>	0.26
<b>Approach Angle (°)</b>	17
<b>Departure Angle (°)</b>	21

## Gearbox

<b>Abbreviation</b>	Electric vehicle single speed gearbox
<b>Number of Gears</b>	1
<b>Transmission Type</b>	Fixed Gear Ratio Transmission

## Chassis steering

<b>Drive Type</b>	Dual-motor All-wheel Drive
<b>Four-wheel drive</b>	Electric four-wheel drive
<b>Front Suspension Type</b>	Double wishbone independent suspension
<b>Rear Suspension Type</b>	Multi-link independent suspension
<b>Power Steering Type</b>	Electric power assistance
<b>Vehicle structure</b>	bearing type

## Seat Configuration

<b>Seat Material</b>	<input type="radio"/> Genuine leather; <input checked="" type="radio"/> Leather/fabric mix
<b>Main seat adjustment</b>	<input checked="" type="radio"/> Front and rear adjustment; <input checked="" type="radio"/> Backrest adjustment; <input checked="" type="radio"/> Height adjustment (4-way); <input checked="" type="radio"/> Lumbar support (4-way)
<b>Co-seat adjustment method</b>	<input checked="" type="radio"/> Front-to-back adjustment; <input checked="" type="radio"/> Backrest adjustment; <input checked="" type="radio"/> Height adjustment (2-way); <input type="radio"/> Leg rest adjustment; <input checked="" type="radio"/> Lumbar support (4-way)
<b>Electric adjustment of driver's seat and passenger seat</b>	Main <input checked="" type="radio"/> /Deputy <input checked="" type="radio"/>
<b>Front seat functions</b>	<input checked="" type="radio"/> Heating; <input type="radio"/> Ventilation; <input type="radio"/> Massage
<b>Electric seat memory function</b>	<input checked="" type="radio"/> driving position; <input checked="" type="radio"/> co-pilot position
<b>Front passenger seat rear adjustable buttons</b>	-

## Seat Configuration (continued)

<b>Rear seat folding</b>	• Proportional down
<b>Front/rear center armrest</b>	Front •/Rear •
<b>Rear cup holder</b>	•
<b>Second row seat functions</b>	○ Heating

## Active safety

<b>Anti-lock Braking System (ABS)</b>	•
<b>Electronic Brakeforce Distribution (EBD/CBC)</b>	•
<b>Brake Assist System (EBA/BAS/BA)</b>	•
<b>Traction Control System (ASR/TCS/TRC)</b>	•
<b>Electronic Stability Control (ESC/ESP/DSC)</b>	•
<b>Tire Pressure Monitoring System (TPMS)</b>	• Tire pressure display
<b>Seat Belt Reminder</b>	• Full car
<b>ISOFIX Child Seat Anchors</b>	•
<b>Lane Departure Warning System (LDWS)</b>	•
<b>Autonomous Emergency Braking (AEB)</b>	•
<b>Driver Fatigue Detection</b>	•
<b>Emergency Call System (eCall)</b>	•
<b>Built-in Dashcam</b>	•

## Air conditioning/refrigerator

<b>Air conditioning temperature control method</b>	• Automatic air conditioning
<b>Rear Independent Climate Control</b>	-
<b>Rear seat air vents</b>	•
<b>Temperature zone control</b>	•
<b>Car air purifier</b>	•
<b>In-cabin PM2.5 Filter</b>	•
<b>Negative ion generator</b>	•

## Air conditioning/refrigerator (continued)

Car fragrance device	○
----------------------	---

## Passive safety

Driver/passenger airbag	Main •/Deputy •
Front/rear side airbags	Front •/Rear-
Front/rear head airbags (curtain airbags)	Front •/Rear •

## Wheel brake

Front Brake Type	Ventilation disc
Rear Brake Type	Ventilation disc
Parking brake type	Electronic Parking
Front Tire Size	255/55 R19
Rear Tire Size	255/55 R19
Spare Tire Size	Tire repair tools

## Audio/Interior Lighting

Number of speakers	• 12 speakers
Interior ambient lighting	• 10 colors
Touch reading light	•

## Driving functions

Navigation traffic information display	•
Lane assist	•
Lane Keeping Assist System	○
Cruise control system	• Cruise control; ○ Full speed adaptive cruise
Satellite navigation system	•
Rear Cross Traffic Alert	○
Road traffic sign recognition	○
Parking Assist	○

## Exterior lighting

Low beam light source	•LED
High beam light source	•LED
LED daytime running lights	•

## Exterior lighting (continued)

<b>Adaptive high and low beam</b>	○
<b>Automatic headlights</b>	•
<b>Front fog lights</b>	•LED
<b>Height-adjustable headlights</b>	•
<b>Headlight Delay Off</b>	•
<b>Turn signal lamp</b>	•

## Exterior mirrors

<b>Exterior mirror function</b>	• Electric adjustment; • Electric folding; • Rearview mirror memory; • Rearview mirror heating; • Automatic downturn when reversing; • Automatic folding when locked; ○ Automatic anti-glare
---------------------------------	--

## Appearance/anti-theft

<b>Rim material</b>	• Aluminum alloy
<b>Electric trunk</b>	•
<b>Central locking system in the car</b>	•
<b>Key Type</b>	• Remote key; • Bluetooth key; • NFC/RFID key
<b>Keyless start system</b>	•
<b>Keyless entry function</b>	• Full car
<b>Hands-free Trunk</b>	•
<b>Electric trunk position memory</b>	•
<b>Remote start function</b>	•
<b>Battery preheating</b>	•
<b>Active closed grille</b>	•
<b>Hidden electric door handle</b>	•

## Skylight/Glass

<b>Sunroof Type</b>	• Panoramic sunroof cannot be opened
<b>Front/rear electric windows</b>	Front •/Rear •
<b>One-touch window lifting function</b>	• Full car

## Skylight/Glass (continued)

<b>Window anti-pinch function</b>	<ul style="list-style-type: none"><li>•</li></ul>
<b>Car makeup mirror</b>	<ul style="list-style-type: none"><li>• Main driver's lamp; • co-pilot's lamp</li></ul>
<b>Rear wiper</b>	-
<b>Rain sensor wiper function</b>	<ul style="list-style-type: none"><li>• Rainfall-sensing</li></ul>
<b>Rear side privacy glass</b>	<ul style="list-style-type: none"><li>•</li></ul>
<b>Side window multi-layer soundproof glass</b>	<ul style="list-style-type: none"><li>• Front row</li></ul>

## Interior and exterior color

<b>Exterior Color</b>	Cloud, White:#FFFFFF, Mars Red:#9C2D28; Extremely Empty Blue:#4445A1; Antarctic Star Blue:#282D55; Deep Space, Black:#000000, Star ash:#939395, Aurora, Green:#616B5F
<b>Interior Color</b>	Technology Black:#000000; Black/Speed Grey:#000000/#D0D0; Black/Himalayan Brown:#000000/#533628

## Steering wheel/interior mirror

<b>Steering Wheel Material</b>	<ul style="list-style-type: none"><li>• Leather</li></ul>
<b>Steering wheel position adjustment</b>	<ul style="list-style-type: none"><li>• Electric up and down front and rear adjustment</li></ul>
<b>Multi-function steering wheel</b>	<ul style="list-style-type: none"><li>•</li></ul>
<b>Heated Steering Wheel</b>	<input type="radio"/>
<b>Steering wheel memory</b>	<ul style="list-style-type: none"><li>•</li></ul>
<b>Trip computer display screen</b>	<ul style="list-style-type: none"><li>• Color</li></ul>
<b>Full LCD instrument panel</b>	<ul style="list-style-type: none"><li>•</li></ul>
<b>LCD instrument size</b>	<ul style="list-style-type: none"><li>•9.8 inches</li></ul>
<b>Interior rearview mirror function</b>	<ul style="list-style-type: none"><li>• Automatic anti-glare</li></ul>
<b>HUD Head Up Digital Display</b>	<input type="radio"/>

## Intelligent configuration

<b>Connected Car Services</b>	<ul style="list-style-type: none"><li>•</li></ul>
<b>OTA Updates</b>	<ul style="list-style-type: none"><li>•</li></ul>

## Driving Control

## Driving Control (continued)

<b>Driving mode switch</b>	• Sport; • Economy; • Standard/Comfort; • Snow
<b>Automatic parking</b>	•
<b>Steep slope descent</b>	•
<b>Hill start assist</b>	•
<b>Variable suspension function</b>	• Suspension soft and hard adjustment; • Suspension height adjustment
<b>Air Suspension</b>	•

## Driving Hardware

<b>Front/rear parking radar</b>	Front •/Rear •
<b>Driving Assistance Camera System</b>	• 360-degree panoramic image
<b>Number of cameras</b>	•9 pieces
<b>Number of ultrasonic radars</b>	• 12
<b>Millimeter wave radar quantity</b>	• 5
<b>Assisted driving chip</b>	•Mobileye EyeQ4
<b>Total chip computing power</b>	•2.5 TOPS
<b>Number of cameras in the car</b>	• 2

## In-car charging

<b>Multimedia/charging port</b>	•USB
<b>Number of USB/Type-C ports</b>	• 2 in the front row/2 in the back row
<b>Mobile phone wireless charging function</b>	• Front row
<b>Luggage compartment 12V power socket</b>	•

## Optional Package

## Optional Package (continued)

### Optional Package

Weilai Battery (70kWh Battery Pack) Rental Service (USD 0.15; Including: car price reduced by USD 10,294, monthly rent USD 144.); Personalized signature design package (USD 662; Including: customized signature panel and customized badge); Happy package (USD 735; Including: steering wheel heating, rear seat heating, intelligent fragrance system, threshold pedal welcome lamp); Enhanced display package (USD 956; Including: enhanced head-up display system (HUD), automatic anti-glare of exterior rearview mirror); Queen's co-driver (USD 1,250; Including: queen's co-driver-electric leg rest and foot rest, parent-child mode seat layout, co-pilot seat extra-long slide rail); NIO Pilot Select Package (USD 2,206; Including: adaptive cruise control (ACC), visual fusion full automatic parking system (S-APA with Fusion), automatic road hold (LKA), rear incoming vehicle warning (CTA-R), incoming vehicle warning-active braking (CTA-B), dynamic instrument interface and lane automatic simulation (ALS), far and near light automatic control (AHB)); Nappa advanced interior trim package (USD 3,088; Including: front seat ventilation, front seat massage, premium Nappa perforated leather seats, premium Nappa leather interior covering); NIO Pilot full package (USD 5,735; including: NIO Pilot Select Package, Automatic Assisted Navigation Driving (NOP), High Speed Automatic Assisted Driving (Highway Pilot), Congestion Automatic Assisted Driving (Traffic Jam Pilot), Turn Signal Control Lane Changer (ALC), Driver Fatigue Warning (DDW), Vehicle Automatic Call (NBS), Road Sign Recognition (TSR), Automatic Speed Limit Adjustment (ISA), Front Side Incoming Warning (CTA-F))

---

"●" = Standard equipment

"□" = Not available

"○" = Optional equipment.

Note: These are Chinese market vehicles. Warranty coverage is not available outside of China.