

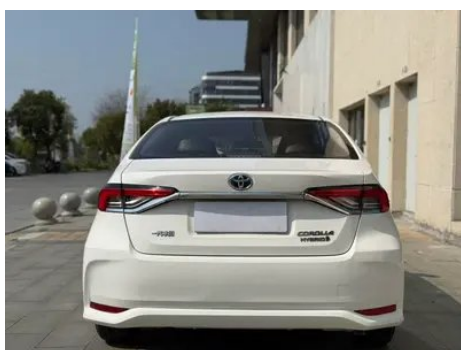
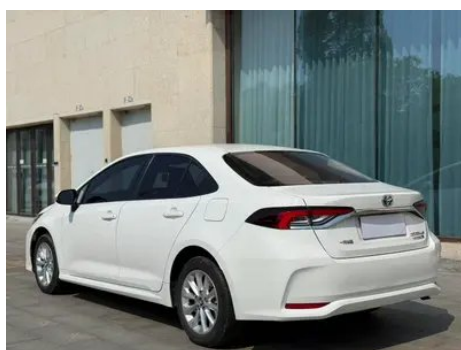
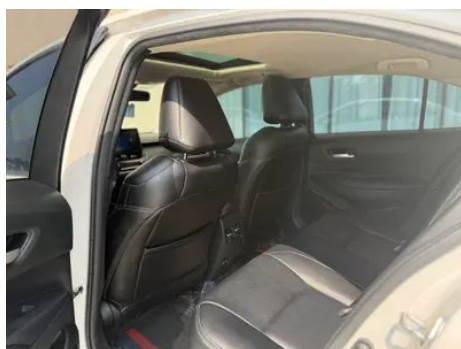
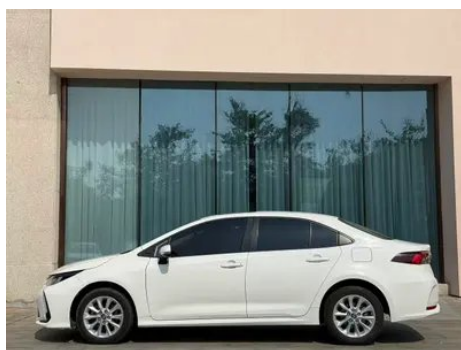
# Vehicle Detail Report

## Toyota Corolla 2021 Dual Power 1.8L E-CVT Elite Edition

### Basic Information

Brand	Toyota
Mileage	120,000 km
Color	White
First Registration	2022-06-01
Transfer Count	0

### Vehicle Images





## Vehicle Condition

1. Inner side of left B-pillar, Non-accident-related deformation. 2. Inner side of right A-pillar, Deformation. 3. Left front fender structure, Body panel repair. 4. Right front fender structure, Body panel repair. 5. Driver's seat rails and frame, Corrosion, Signs of removal. 6. Left rear quarter panel, Paint repair.

## Configuration Information

### Model Information

<b>Model Name</b>	Toyota Corolla 2021 Dual Power 1.8L E-CVT Elite Edition
<b>Launch Date</b>	2020.07

### Basic parameters

<b>Vehicle Class</b>	compact car
<b>Energy Type</b>	Hybrid Electric Vehicle (HEV)
<b>Maximum Power (kW)</b>	72
<b>Maximum Torque (N·m)</b>	142
<b>Transmission</b>	E-CVT continuously variable transmission
<b>Body Type</b>	Sedan
<b>Engine</b>	1.8L 98 horsepower L4
<b>Dimensions (L×W×H) (mm)</b>	4635*1780*1455
<b>Official 0-100 km/h Acceleration (s)</b>	-
<b>Top Speed (km/h)</b>	160
<b>Curb Weight (kg)</b>	1420
<b>Maximum Gross Weight (kg)</b>	1845
<b>Electric Motor (PS)</b>	72
<b>NEDC Combined Fuel Consumption (L/100km)</b>	4.1

### engine

<b>Engine Model</b>	8ZR-FXE
<b>Displacement (mL)</b>	1798

## engine (continued)

<b>Displacement (L)</b>	1.8
<b>Induction Type</b>	Natural aspiration
<b>Cylinder Arrangement</b>	L
<b>Number of Cylinders</b>	4
<b>Valves per Cylinder</b>	4
<b>Compression Ratio</b>	13
<b>Valve Train</b>	DOHC
<b>Bore (mm)</b>	80.5
<b>Stroke (mm)</b>	88.3
<b>Maximum Power (PS)</b>	98
<b>Max Power Speed (rpm)</b>	5200
<b>Max Torque Speed (rpm)</b>	3600
<b>Maximum net power (kW)</b>	72
<b>Fuel Grade</b>	92.
<b>Fuel Delivery System</b>	Multi-point EFI
<b>Cylinder Head Material</b>	Aluminum alloy
<b>Cylinder Block Material</b>	Aluminum alloy
<b>Engine layout</b>	Horizontal
<b>Engine-specific technologies</b>	VVT-i

## Electric Motor

<b>Motor Type</b>	Permanent magnet/synchronous
<b>Total Electric Motor Power (kW)</b>	53
<b>Total Electric Motor Torque (N·m)</b>	163
<b>Front Electric Motor Max Power (kW)</b>	53
<b>Front Electric Motor Max Torque (N·m)</b>	163
<b>System total power (kW)</b>	90
<b>Number of drive motors</b>	-
<b>Motor Layout</b>	-
<b>Battery Type</b>	Nickel-metal hydride battery

## Screen/System

## Screen/System (continued)

<b>Central control color screen</b>	<ul style="list-style-type: none"><li>• Touch LCD screen</li></ul>
<b>Infotainment Screen Size</b>	<ul style="list-style-type: none"><li>•9 inches</li></ul>
<b>Bluetooth/In-car Phone</b>	<ul style="list-style-type: none"><li>•</li></ul>
<b>Voice recognition control system</b>	<ul style="list-style-type: none"><li>• Multimedia system;</li><li>• Navigation;</li><li>• Telephone;</li><li>• Air conditioning;</li><li>• Sunroof</li></ul>

## Body

<b>Length (mm)</b>	4635
<b>Width (mm)</b>	1780
<b>Height (mm)</b>	1455
<b>Wheelbase (mm)</b>	2700
<b>Front Track (mm)</b>	1527
<b>Rear Track (mm)</b>	1526
<b>Ground Clearance (Fully Loaded) (mm)</b>	146
<b>Door Opening Type</b>	swing door
<b>Number of Doors</b>	4
<b>Number of Seats</b>	5
<b>Fuel Tank Capacity (L)</b>	43
<b>Trunk volume (L)</b>	470
<b>Drag Coefficient (Cd)</b>	-
<b>Approach Angle (°)</b>	12
<b>Departure Angle (°)</b>	11
<b>Minimum Turning Radius (m)</b>	5.2

## Gearbox

<b>Abbreviation</b>	E-CVT continuously variable transmission
<b>Number of Gears</b>	stepless speed change
<b>Transmission Type</b>	Electronic Continuously Variable Transmission (E-CVT)

## Chassis steering

<b>Drive Type</b>	Front-engine, Front-wheel drive (FF)
<b>Front Suspension Type</b>	MacPherson independent suspension
<b>Rear Suspension Type</b>	E-type multi-link independent suspension

## Chassis steering (continued)

<b>Power Steering Type</b>	Electric power assistance
<b>Vehicle structure</b>	bearing type

## Seat Configuration

<b>Seat Material</b>	<ul style="list-style-type: none"><li>• Fabric</li></ul>
<b>Main seat adjustment</b>	<ul style="list-style-type: none"><li>• Front and rear adjustment;</li><li>• Backrest adjustment;</li><li>• Height adjustment (2-way)</li></ul>
<b>Co-seat adjustment method</b>	<ul style="list-style-type: none"><li>• Front and rear adjustment;</li><li>• Backrest adjustment</li></ul>
<b>Electric adjustment of driver's seat and passenger seat</b>	-
<b>Front passenger seat rear adjustable buttons</b>	-
<b>Front/rear center armrest</b>	Front •/Rear-
<b>Rear cup holder</b>	-

## Active safety

<b>Anti-lock Braking System (ABS)</b>	<ul style="list-style-type: none"><li>•</li></ul>
<b>Electronic Brakeforce Distribution (EBD/CBC)</b>	<ul style="list-style-type: none"><li>•</li></ul>
<b>Brake Assist System (EBA/BAS/BA)</b>	<ul style="list-style-type: none"><li>•</li></ul>
<b>Traction Control System (ASR/TCS/TRC)</b>	<ul style="list-style-type: none"><li>•</li></ul>
<b>Electronic Stability Control (ESC/ESP/DSC)</b>	<ul style="list-style-type: none"><li>•</li></ul>
<b>Tire Pressure Monitoring System (TPMS)</b>	<ul style="list-style-type: none"><li>• Tire pressure display</li></ul>
<b>Seat Belt Reminder</b>	<ul style="list-style-type: none"><li>• Full vehicle</li></ul>
<b>ISOFIX Child Seat Anchors</b>	<ul style="list-style-type: none"><li>•</li></ul>
<b>Lane Departure Warning System (LDWS)</b>	<ul style="list-style-type: none"><li>•</li></ul>
<b>Autonomous Emergency Braking (AEB)</b>	<ul style="list-style-type: none"><li>•</li></ul>
<b>Driver Fatigue Detection</b>	-
<b>Forward Collision Warning (FCW)</b>	<ul style="list-style-type: none"><li>•</li></ul>
<b>Low Speed Alert</b>	<ul style="list-style-type: none"><li>•</li></ul>

## Active safety (continued)

<b>Emergency Call System (eCall)</b>	•
--------------------------------------	---

## Air conditioning/refrigerator

<b>Air conditioning temperature control method</b>	• Automatic air conditioning
<b>Rear Independent Climate Control</b>	-
<b>Rear seat air vents</b>	•
<b>Temperature zone control</b>	-
<b>Car air purifier</b>	-
<b>In-cabin PM2.5 Filter</b>	•

## Passive safety

<b>Driver/passenger airbag</b>	Main •/Deputy •
<b>Front/rear side airbags</b>	Front •/Rear-
<b>Front/rear head airbags (curtain airbags)</b>	Front •/Rear •
<b>Knee airbag</b>	• Driver's knee airbag
<b>Passenger seat cushion airbag</b>	•

## Wheel brake

<b>Front Brake Type</b>	Ventilation disc
<b>Rear Brake Type</b>	Disc
<b>Parking brake type</b>	Electronic Parking
<b>Front Tire Size</b>	205/55 R16
<b>Rear Tire Size</b>	205/55 R16
<b>Spare Tire Size</b>	Not full-size

## Audio/Interior Lighting

<b>Number of speakers</b>	• 6 speakers
---------------------------	--------------

## Driving functions

<b>Navigation traffic information display</b>	•
<b>Lane assist</b>	-
<b>Lane Keeping Assist System</b>	•
<b>Cruise control system</b>	• Full speed adaptive cruise
<b>Satellite navigation system</b>	•

## Driving functions (continued)

<b>Driving assistance level</b>	•L2
<b>Lane centering</b>	•
<b>Driver assistance systems</b>	•Toyota Safety Sense
<b>Parking Assist</b>	-

## Exterior lighting

<b>Low beam light source</b>	• Halogen
<b>High beam light source</b>	• Halogen
<b>LED daytime running lights</b>	•
<b>Adaptive high and low beam</b>	•
<b>Automatic headlights</b>	•
<b>Front fog lights</b>	•LED
<b>Height-adjustable headlights</b>	•
<b>Headlight Delay Off</b>	-

## Exterior mirrors

<b>Exterior mirror function</b>	• Electric adjustment; • Mirror heating
---------------------------------	---

## Appearance/anti-theft

<b>Rim material</b>	• Aluminum alloy
<b>Electric trunk</b>	-
<b>Electronic engine immobilizer</b>	•
<b>Central locking system in the car</b>	•
<b>Key Type</b>	• Remote key
<b>Keyless start system</b>	•
<b>Keyless entry function</b>	• Front row

## Skylight/Glass

<b>Sunroof Type</b>	• Electric sunroof
<b>Front/rear electric windows</b>	Front •/Rear •
<b>One-touch window lifting function</b>	• Full vehicle
<b>Window anti-pinch function</b>	•

## Skylight/Glass (continued)

<b>Car makeup mirror</b>	<ul style="list-style-type: none"><li>• Main driving position;</li><li>• First officer</li></ul>
<b>Rear wiper</b>	-

## Interior and exterior color

<b>Exterior Color</b>	Silver Metallic #D8DDD6 Platinum Bronze Metallic #8D857F Celestite Metallic #48525E super white #FDFDFD biotite #000000 Platinum White #E5E5E5
<b>Interior Color</b>	Black:#3E4146; Black/Beige:#3E4146/#C9A782

## Steering wheel/interior mirror

<b>Steering Wheel Material</b>	<ul style="list-style-type: none"><li>• Plastic</li></ul>
<b>Steering wheel position adjustment</b>	<ul style="list-style-type: none"><li>• Manual up and down front and rear adjustment</li></ul>
<b>Multi-function steering wheel</b>	<ul style="list-style-type: none"><li>•</li></ul>
<b>Heated Steering Wheel</b>	-
<b>Steering wheel memory</b>	-
<b>Trip computer display screen</b>	<ul style="list-style-type: none"><li>• Color</li></ul>
<b>Full LCD instrument panel</b>	-
<b>LCD instrument size</b>	<ul style="list-style-type: none"><li>• 4.2 inches</li></ul>
<b>Interior rearview mirror function</b>	<ul style="list-style-type: none"><li>• Manual anti-glare</li></ul>
<b>Gear shifting</b>	<ul style="list-style-type: none"><li>• Mechanical gear shift</li></ul>

## Intelligent configuration

<b>Connected Car Services</b>	<ul style="list-style-type: none"><li>•</li></ul>
<b>OTA Updates</b>	-
<b>Mobile APP remote function</b>	<ul style="list-style-type: none"><li>•</li></ul>

## Driving Control

<b>Driving mode switch</b>	<ul style="list-style-type: none"><li>• Movement;</li><li>• Economy</li></ul>
<b>Automatic parking</b>	<ul style="list-style-type: none"><li>•</li></ul>
<b>Hill start assist</b>	<ul style="list-style-type: none"><li>•</li></ul>
<b>Energy recovery system</b>	<ul style="list-style-type: none"><li>•</li></ul>

## Driving Hardware

<b>Front/rear parking radar</b>	-
---------------------------------	---

## Driving Hardware (continued)

<b>Driving Assistance Camera System</b>	• Reversing image
---	-------------------

## In-car charging

<b>Multimedia/charging port</b>	•USB
<b>Number of USB/Type-C ports</b>	• 1 in the front row/2 in the back row

---

"●" = Standard equipment

"-" = Not available

"○" = Optional equipment.

Note: These are Chinese market vehicles. Warranty coverage is not available outside of China.