

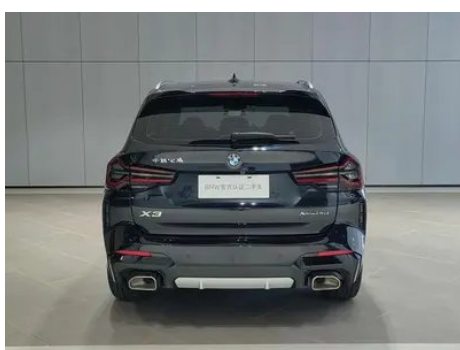
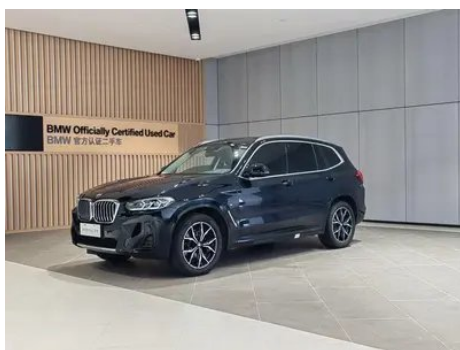
Vehicle Detail Report

BMW X3 2022 Restyling xDrive25i M Sports suit

Basic Information

| | |
|--------------------|------------|
| Brand | BMW |
| Mileage | 49,000 km |
| Color | Black |
| First Registration | 2023-04-01 |
| Transfer Count | 1 |

Vehicle Images





Vehicle Condition

1. Inner side of left B-pillar, Scratch.

Configuration Information

Model Information

| | |
|--------------------|---|
| Model Name | BMW X3 2022 Restyling xDrive25i M Sports suit |
| Launch Date | 2022.08 |

Basic parameters

| | |
|---|---------------------------|
| Vehicle Class | Mid-size SUV |
| Energy Type | Gasoline |
| Maximum Power (kW) | 135 |
| Maximum Torque (N·m) | 300 |
| Transmission | 8-gear manual integration |
| Body Type | SUV |
| Engine | 2.0L 184 hp L4 |
| Dimensions (L×W×H) (mm) | 4737*1891*1689 |
| Official 0-100 km/h Acceleration (s) | 8.9 |
| Top Speed (km/h) | 210 |
| Curb Weight (kg) | 1857 |
| Maximum Gross Weight (kg) | 2510 |
| NEDC Combined Fuel Consumption (L/100km) | 8.4 |

Basic parameters (continued)

| | |
|---|-----|
| WLTP Combined Fuel Consumption (L/100km) | 8.3 |
|---|-----|

engine

| | |
|--------------------------------|------------------|
| Engine Model | B48B20C |
| Displacement (mL) | 1998 |
| Displacement (L) | 2.0 |
| Induction Type | Turbocharging |
| Cylinder Arrangement | L |
| Number of Cylinders | 4 |
| Valves per Cylinder | 4 |
| Valve Train | DOHC |
| Maximum Power (PS) | 184 |
| Max Power Speed (rpm) | 5000-6500 |
| Max Torque Speed (rpm) | 1350-4000 |
| Maximum net power (kW) | 135 |
| Fuel Grade | 95. |
| Fuel Delivery System | Direct injection |
| Cylinder Head Material | Aluminum alloy |
| Cylinder Block Material | Aluminum alloy |
| Engine layout | Longitudinal |

Screen/System

| | |
|---|--|
| Central control color screen | <ul style="list-style-type: none">• Touch LCD screen |
| Infotainment Screen Size | <ul style="list-style-type: none">• 12.3 inches |
| Bluetooth/In-car Phone | <ul style="list-style-type: none">• |
| Smartphone Integration/Mirroring | <ul style="list-style-type: none">• Apple CarPlay support;• Baidu CarLife support |
| Voice recognition control system | <ul style="list-style-type: none">• Multimedia system;• Navigation;• Telephone |
| In-vehicle intelligent system | <ul style="list-style-type: none">• iDrive |

Body

| | |
|-----------------------|------|
| Length (mm) | 4737 |
| Width (mm) | 1891 |
| Height (mm) | 1689 |
| Wheelbase (mm) | 2864 |

Body (continued)

| | |
|-------------------------------|------------|
| Front Track (mm) | 1600 |
| Rear Track (mm) | 1616 |
| Door Opening Type | swing door |
| Number of Doors | 5 |
| Number of Seats | 5 |
| Fuel Tank Capacity (L) | 65 |
| Trunk volume (L) | - |
| Drag Coefficient (Cd) | - |
| Approach Angle (°) | 24 |
| Departure Angle (°) | 22 |

Gearbox

| | |
|--------------------------|--|
| Abbreviation | 8-gear manual integration |
| Number of Gears | 8 |
| Transmission Type | Automatic Transmission with Manual Mode (AT) |

Chassis steering

| | |
|---------------------------------------|---|
| Drive Type | Front-engine, All-wheel drive (F-AWD) |
| Four-wheel drive | Timely four-wheel drive |
| Central differential structure | Multi-plate clutch |
| Front Suspension Type | Dual-ball-joint MacPherson independent suspension |
| Rear Suspension Type | Multi-link independent suspension |
| Power Steering Type | Electric power assistance |
| Vehicle structure | bearing type |

Seat Configuration

| | |
|----------------------------------|---|
| Seat Material | • Imitation leather |
| Main seat adjustment | • Front and rear adjustment • Backrest adjustment Height adjustment (Four directions) • Leg rest adjustment Waist support (Four directions) (1500 yuan) |
| Co-seat adjustment method | • Front and rear adjustment; • Backrest adjustment; • Height adjustment (4-way); • Leg support adjustment |

Seat Configuration (continued)

| | |
|--|-----------------------|
| Electric adjustment of driver's seat and passenger seat | Main •/Deputy • |
| Front seat functions | • Heating |
| Electric seat memory function | • Driving position |
| Front passenger seat rear adjustable buttons | - |
| Second row seat adjustment | • Backrest adjustment |
| Rear seat folding | • Proportional down |
| Front/rear center armrest | Front •/Rear • |
| Rear cup holder | • |

Active safety

| | |
|---|-------------------------|
| Anti-lock Braking System (ABS) | • |
| Electronic Brakeforce Distribution (EBD/CBC) | • |
| Brake Assist System (EBA/BAS/BA) | • |
| Traction Control System (ASR/TCS/TRC) | • |
| Electronic Stability Control (ESC/ESP/DSC) | • |
| Tire Pressure Monitoring System (TPMS) | • Tire pressure display |
| Seat Belt Reminder | • Front row |
| ISOFIX Child Seat Anchors | • |
| Lane Departure Warning System (LDWS) | ○ |
| Autonomous Emergency Braking (AEB) | • |
| Driver Fatigue Detection | • |
| Forward Collision Warning (FCW) | • |
| Emergency Call System (eCall) | • |
| Built-in Dashcam | ○ |

Air conditioning/refrigerator

Air conditioning/refrigerator (continued)

| | |
|--|------------------------------|
| Air conditioning temperature control method | • Automatic air conditioning |
| Rear Independent Climate Control | • |
| Rear seat air vents | • |
| Temperature zone control | • |
| Car air purifier | - |
| In-cabin PM2.5 Filter | • |

Passive safety

| | |
|--|-----------------|
| Driver/passenger airbag | Main •/Deputy • |
| Front/rear side airbags | Front •/Rear- |
| Front/rear head airbags (curtain airbags) | Front •/Rear • |
| Run-flat tires | • |

Wheel brake

| | |
|---------------------------|--------------------|
| Front Brake Type | Ventilation disc |
| Rear Brake Type | Ventilation disc |
| Parking brake type | Electronic Parking |
| Front Tire Size | 245/50 R19 |
| Rear Tire Size | 245/50 R19 |
| Spare Tire Size | None |

Audio/Interior Lighting

| | |
|----------------------------------|---|
| Speaker Brand Name | <input type="radio"/> Harman/Kardon (USD 1,471) |
| Number of speakers | • 6 horns; <input type="radio"/> 16 horns |
| Interior ambient lighting | • 11 colors |

Driving functions

| | |
|---|---|
| Navigation traffic information display | • |
| Lane assist | <input type="radio"/> |
| Lane Keeping Assist System | <input type="radio"/> |
| Cruise control system | • Cruise control; <input type="radio"/> Adaptive cruise control (USD 1,618); <input type="radio"/> Full-speed adaptive cruise control |
| Satellite navigation system | • |
| Driving assistance level | <input type="radio"/> L2 |

Driving functions (continued)

| | |
|--------------------------------------|-----------------------|
| Rear Cross Traffic Alert | <input type="radio"/> |
| Lane centering | <input type="radio"/> |
| Road traffic sign recognition | <input type="radio"/> |
| Tracking reverse | <input type="radio"/> |
| Parking Assist | <input type="radio"/> |
| Lane Change Assist | <input type="radio"/> |

Exterior lighting

| | |
|-------------------------------------|------|
| Low beam light source | •LED |
| High beam light source | •LED |
| LED daytime running lights | • |
| Adaptive high and low beam | • |
| Automatic headlights | • |
| Height-adjustable headlights | • |
| Headlight Delay Off | • |
| Turn headlights | • |

Exterior mirrors

| | |
|---------------------------------|---|
| Exterior mirror function | • Electric adjustment; • Electric folding; • Mirror memory function; • Heated mirrors; • Automatic downfolding on reverse; • Automatic folding upon locking; <input type="radio"/> Auto-dimming (USD 368) |
|---------------------------------|---|

Appearance/anti-theft

| | |
|--|--|
| Rim material | • Aluminum alloy |
| Electric trunk | • |
| Electronic engine immobilizer | • |
| Central locking system in the car | • |
| Key Type | • Remote key |
| Keyless start system | • |
| Keyless entry function | <input type="radio"/> Full vehicle (USD 809) |
| Appearance Kit | • Sports style |
| Hands-free Trunk | <input type="radio"/> |

Appearance/anti-theft (continued)

| | |
|---------------------------------------|---|
| Electric trunk position memory | <ul style="list-style-type: none">• |
| Roof rack | <ul style="list-style-type: none">• |
| Remote start function | <ul style="list-style-type: none">• |

Skylight/Glass

| | |
|--|---|
| Sunroof Type | <ul style="list-style-type: none">• Openable panoramic sunroof |
| Front/rear electric windows | Front •/Rear • |
| One-touch window lifting function | <ul style="list-style-type: none">• Full vehicle |
| Window anti-pinch function | <ul style="list-style-type: none">• |
| Car makeup mirror | <ul style="list-style-type: none">• Main driver's lamp; • co-pilot's lamp |
| Rear wiper | <ul style="list-style-type: none">• |
| Rain sensor wiper function | <ul style="list-style-type: none">• Rainfall-sensing |

Interior and exterior color

| | |
|-----------------------|--|
| Exterior Color | Ore White #E7E7E7 Carbon black #232A30 Fragrant Red #810B17 cashmi silver #C6C1B4 Quantum Blue #273F7C Mysterious Gray #262626 |
| Interior Color | Black Mocha color #000000 #423534 Black #000000 Black Volcano Red #000000 #8A3D47 Black Cognac color #000000 #78593D |

Steering wheel/interior mirror

| | |
|---|--|
| Steering Wheel Material | <ul style="list-style-type: none">• Leather |
| Steering wheel position adjustment | <ul style="list-style-type: none">• Manual up and down front and rear adjustment |
| Multi-function steering wheel | <ul style="list-style-type: none">• |
| Heated Steering Wheel | - |
| Steering wheel memory | - |
| Trip computer display screen | <ul style="list-style-type: none">• Color |
| Full LCD instrument panel | <ul style="list-style-type: none">• |
| LCD instrument size | <ul style="list-style-type: none">• 12.3 inches |

Steering wheel/interior mirror (continued)

| | |
|--|-------------------------|
| Interior rearview mirror function | • Automatic anti-glare |
| Gear shifting | • Electronic gear shift |
| HUD Head Up Digital Display | ○(USD 1,471) |
| ETC Device | ○(USD 147) |

Intelligent configuration

| | |
|-----------------------------------|---|
| Connected Car Services | • |
| OTA Updates | • |
| 4G/5G Network | •4G |
| Mobile APP remote function | • Door control; • Vehicle start; • Climate control; • Vehicle status check/diagnostics; • Vehicle location / find my car; • Owner services (charging stations, gas stations, parking, etc.); • Service/repair appointment |
| Wi-Fi hotspots | ○ |

Driving Control

| | |
|-------------------------------------|---|
| Driving mode switch | • Sport; • Economy; • Standard/Comfort; • Customization/Personalization |
| Automatic parking | • |
| Steep slope descent | • |
| Hill start assist | • |
| Engine start-stop technology | • |

Driving Hardware

| | |
|---|---|
| Front/rear parking radar | Front •/Rear • |
| Driving Assistance Camera System | • Reversing image; ○ 360-degree panoramic image |

In-car charging

| | |
|--|--|
| Multimedia/charging port | •USB;•Type-C |
| Number of USB/Type-C ports | • 2 in the front row/2 in the back row |
| Mobile phone wireless charging function | ○ Front row |

Optional Package

Optional Package (continued)

| Optional Package | |
|------------------|---|
| | Entertainment package 1(USD 1,471; Including: Harman/Kardon Harman Kardon high-end sound system, mobile phone wireless charging, Wi-Fi hot spots) Comfortable Suit (11000 yuan Contains BMW Dashcam Automatic parking assist system Plus (with 360 Degree panoramic parking image and parking radar) Interior rearview mirror with automatic anti-glare function and driver's side exterior rearview mirror Keyless entry) Automatic driving assistance system Pro (18000 yuan Contains Traffic congestion assistance lane change assist One key cruise speed setting assist Emergency docking assistance, etc.) |

"●" = Standard equipment

"-" = Not available

"○" = Optional equipment.

Note: These are Chinese market vehicles. Warranty coverage is not available outside of China.