

Vehicle Detail Report

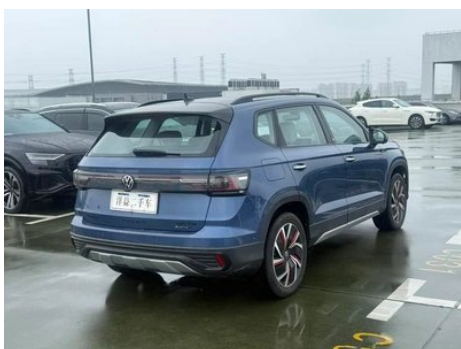
Tharu 2023 330TSI Four-wheel drive Moon Edition

Basic Information

Brand	Volkswagen
Mileage	1,300 km
Color	Blue
First Registration	2026-03-01
Transfer Count	0

Vehicle Images





Vehicle Condition

1. Original metal panels and factory paint.

Configuration Information

Model Information

Model Name	Tharu 2023 330TSI Four-wheel drive Moon Edition
Launch Date	2023.03

Basic parameters

Vehicle Class	Compact SUV
Energy Type	Gasoline
Maximum Power (kW)	137
Maximum Torque (N·m)	320
Transmission	7-speed wet dual-clutch
Body Type	SUV
Engine	2.0T 186 horsepower L4
Dimensions (L×W×H) (mm)	4458*1841*1632

Basic parameters (continued)

Official 0-100 km/h Acceleration (s)	8.6
Top Speed (km/h)	200
Curb Weight (kg)	1655
Maximum Gross Weight (kg)	2125
WLTP Combined Fuel Consumption (L/100km)	6.93

engine

Engine Model	EA888-DTH
Displacement (mL)	1984
Displacement (L)	2.0
Induction Type	Turbocharging
Cylinder Arrangement	L
Number of Cylinders	4
Valves per Cylinder	4
Valve Train	DOHC
Maximum Power (PS)	186
Max Power Speed (rpm)	4150-6000
Max Torque Speed (rpm)	1500-4050
Maximum net power (kW)	137
Fuel Grade	95.
Fuel Delivery System	Mixed injection
Cylinder Head Material	Aluminum alloy
Cylinder Block Material	Cast iron
Engine layout	Horizontal

Screen/System

Central control color screen	<ul style="list-style-type: none">• Touch LCD screen
Infotainment Screen Size	<ul style="list-style-type: none">• 12 inches
Bluetooth/In-car Phone	<ul style="list-style-type: none">•
Smartphone Integration/Mirroring	<ul style="list-style-type: none">• Support CarPlay;• Support CarLife;• Factory interconnection/mapping
Voice recognition control system	<ul style="list-style-type: none">• Multimedia system;• Navigation;• Telephone

Screen/System (continued)

In-vehicle intelligent system	•IQ. Connectivity
--------------------------------------	-------------------

Body

Length (mm)	4458
Width (mm)	1841
Height (mm)	1632
Wheelbase (mm)	2680
Front Track (mm)	1576
Rear Track (mm)	1541
Door Opening Type	swing door
Number of Doors	5
Number of Seats	5
Fuel Tank Capacity (L)	56.5
Trunk volume (L)	374-1462
Drag Coefficient (Cd)	-
Approach Angle (°)	19
Departure Angle (°)	21

Gearbox

Abbreviation	7-speed wet dual-clutch
Number of Gears	7
Transmission Type	Wet Dual-Clutch Transmission (DCT)

Chassis steering

Drive Type	Front-engine, All-wheel drive (F-AWD)
Four-wheel drive	Timely four-wheel drive
Central differential structure	Multi-plate clutch
Front Suspension Type	MacPherson independent suspension
Rear Suspension Type	Multi-link independent suspension
Power Steering Type	Electric power assistance
Vehicle structure	bearing type

Seat Configuration

Seat Material	• Imitation leather
----------------------	---------------------

Seat Configuration (continued)

Main seat adjustment	<ul style="list-style-type: none">• Front and rear adjustment;• Backrest adjustment;• Height adjustment (4-way);• Lumbar support (4-way)
Co-seat adjustment method	<ul style="list-style-type: none">• Front and rear adjustment;• Backrest adjustment;• Height adjustment (4-way);• Lumbar support (4-way)
Electric adjustment of driver's seat and passenger seat	Main •/Deputy •
Front seat functions	<ul style="list-style-type: none">• Heating
Front passenger seat rear adjustable buttons	-
Rear seat folding	<ul style="list-style-type: none">• Proportional down
Front/rear center armrest	Front •/Rear •
Rear cup holder	<ul style="list-style-type: none">•

Active safety

Anti-lock Braking System (ABS)	<ul style="list-style-type: none">•
Electronic Brakeforce Distribution (EBD/CBC)	<ul style="list-style-type: none">•
Brake Assist System (EBA/BAS/BA)	<ul style="list-style-type: none">•
Traction Control System (ASR/TCS/TRC)	<ul style="list-style-type: none">•
Electronic Stability Control (ESC/ESP/DSC)	<ul style="list-style-type: none">•
Tire Pressure Monitoring System (TPMS)	<ul style="list-style-type: none">• Tire pressure alarm
Seat Belt Reminder	<ul style="list-style-type: none">• Full car
ISOFIX Child Seat Anchors	<ul style="list-style-type: none">•
Lane Departure Warning System (LDWS)	<ul style="list-style-type: none">•
Autonomous Emergency Braking (AEB)	<ul style="list-style-type: none">•
Driver Fatigue Detection	<ul style="list-style-type: none">•
Forward Collision Warning (FCW)	<ul style="list-style-type: none">•
Emergency Call System (eCall)	<ul style="list-style-type: none">•

Air conditioning/refrigerator

Air conditioning/refrigerator (continued)

Air conditioning temperature control method	<ul style="list-style-type: none">• Automatic air conditioning
Rear Independent Climate Control	-
Rear seat air vents	<ul style="list-style-type: none">•
Temperature zone control	<ul style="list-style-type: none">•
Car air purifier	-
In-cabin PM2.5 Filter	<ul style="list-style-type: none">•

Passive safety

Driver/passenger airbag	Main <ul style="list-style-type: none">• /Deputy <ul style="list-style-type: none">•
Front/rear side airbags	Front <ul style="list-style-type: none">• /Rear-
Front/rear head airbags (curtain airbags)	Front <ul style="list-style-type: none">• /Rear <ul style="list-style-type: none">•

Wheel brake

Front Brake Type	Ventilation disc
Rear Brake Type	Disc
Parking brake type	Electronic Parking
Front Tire Size	225/50 R18
Rear Tire Size	225/50 R18
Spare Tire Size	Not full-size
Spare tire placement	In the trunk

Audio/Interior Lighting

Speaker Brand Name	<input type="radio"/> Beats
Number of speakers	<ul style="list-style-type: none">• 6 speakers
Interior ambient lighting	<ul style="list-style-type: none">•

Driving functions

Navigation traffic information display	<ul style="list-style-type: none">•
Lane assist	<ul style="list-style-type: none">•
Lane Keeping Assist System	<ul style="list-style-type: none">•
Cruise control system	<ul style="list-style-type: none">• Full speed adaptive cruise
Satellite navigation system	<ul style="list-style-type: none">•
Driving assistance level	<ul style="list-style-type: none">•L2
Lane centering	<ul style="list-style-type: none">•

Driving functions (continued)

Driver assistance systems	•IQ. Drive
Parking Assist	•

Exterior lighting

Low beam light source	•LED
High beam light source	•LED
LED daytime running lights	•
Adaptive high and low beam	•
Automatic headlights	•
Height-adjustable headlights	•
Headlight Delay Off	•
Lighting features	• Matrix
Turn headlights	•
Turn signal lamp	•

Exterior mirrors

Exterior mirror function	•Electric adjustment; •Electric folding; •Rearview mirror heating; •Automatically turn down when reversing; •Automatically fold when locking the car
---------------------------------	--

Appearance/anti-theft

Rim material	• Aluminum alloy
Electric trunk	•
Electronic engine immobilizer	•
Central locking system in the car	•
Key Type	• Remote key
Keyless start system	•
Keyless entry function	• Front row
Hands-free Trunk	•
Electric trunk position memory	•
Roof rack	•

Skylight/Glass

Sunroof Type	• Openable panoramic sunroof
---------------------	------------------------------

Skylight/Glass (continued)

Front/rear electric windows	Front •/Rear •
One-touch window lifting function	• Full car
Window anti-pinch function	•
Car makeup mirror	• Main driver's lamp; • co-pilot's lamp
Rear wiper	•
Rain sensor wiper function	• Rainfall-sensing

Interior and exterior color

Exterior Color	Moon blue:#174B94; Moon white:#F5F5F5; Moon silver:#C9D1D3; Moon frost green:#326F7A; Moon red:#9A345F; Moon obsidian ash:#323232
Interior Color	Black, Green, #000000/#5E7482, Black, Red, #000000/#923A3A

Steering wheel/interior mirror

Steering Wheel Material	• Leather
Steering wheel position adjustment	• Manual up and down front and rear adjustment
Multi-function steering wheel	•
Heated Steering Wheel	-
Steering wheel memory	-
Trip computer display screen	• Color
Full LCD instrument panel	•
LCD instrument size	• 10.25 inches
Interior rearview mirror function	• Automatic anti-glare
Gear shifting	• Mechanical gear shift

Intelligent configuration

Connected Car Services	•
OTA Updates	•
4G/5G Network	•4G

Intelligent configuration (continued)

Mobile APP remote function	• Vehicle condition inquiry/diagnosis; • Vehicle location/vehicle search
Wi-Fi hotspots	•

Driving Control

Driving mode switch	• Sport; • Economy; • Standard/Comfort; • Off-road; • Snow
Automatic parking	•
Steep slope descent	•
Hill start assist	•
Engine start-stop technology	•

Driving Hardware

Front/rear parking radar	Front •/Rear •
Driving Assistance Camera System	• 360-degree panoramic image

In-car charging

Multimedia/charging port	•USB;•Type-C
Number of USB/Type-C ports	• 2 in the front row/2 in the back row
Mobile phone wireless charging function	• Front row
Luggage compartment 12V power socket	•

"●" = Standard equipment

"-" = Not available

"○" = Optional equipment.

Note: These are Chinese market vehicles. Warranty coverage is not available outside of China.