

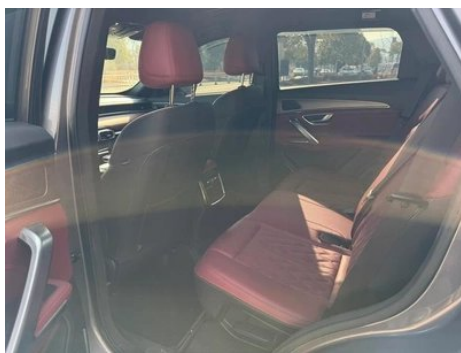
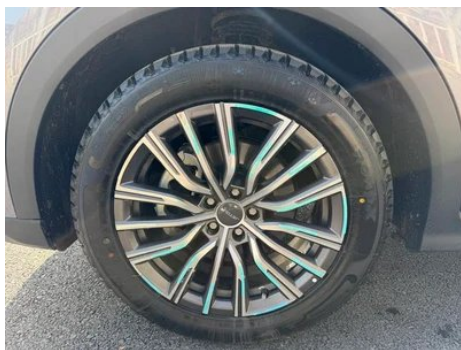
Vehicle Detail Report

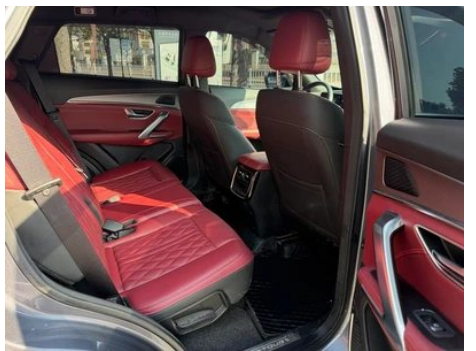
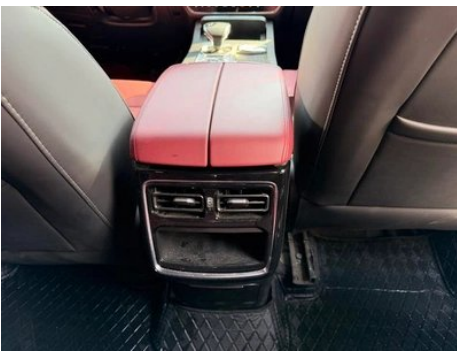
Jetour X70 Plus 2024 Champion Edition 1.5T
DCT Champion PRO 5 seat

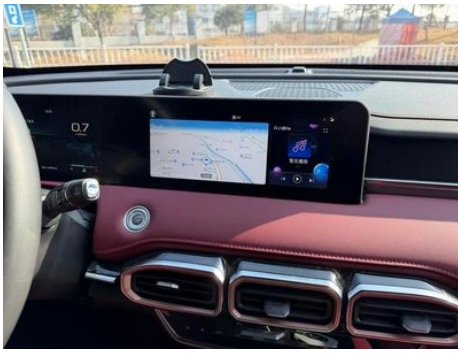
Basic Information

Brand	Jetour
Mileage	14,900 km
Color	Dark gray
First Registration	2024-09-01
Transfer Count	1

Vehicle Images







Vehicle Condition

1. Left rocker panel, Outer-side deformation. 2. Right rocker panel, Outer-side deformation. 3. Front bumper, Scrape. 4. Rear bumper, Scrape. 5. Left rear door, Scratch. 6. Left front fender, Scratch. 7. Windshield, Stone chip. 8. Right tail light, Scratch.

Configuration Information

Model Information

Model Name	Jetour X70 Plus 2024 Champion Edition 1.5T DCT Champion PRO 5 seat
Launch Date	2024.05

Basic parameters

Vehicle Class	Mid-size SUV
Energy Type	Gasoline
Maximum Power (kW)	115
Maximum Torque (N·m)	230
Transmission	6-speed wet dual-clutch
Body Type	SUV
Engine	1.5T 156 horsepower L4
Dimensions (L×W×H) (mm)	4749*1900*1720
Official 0-100 km/h Acceleration (s)	-
Top Speed (km/h)	180
Curb Weight (kg)	1548
Maximum Gross Weight (kg)	2195
WLTP Combined Fuel Consumption (L/100km)	7.92
First Owner Warranty Policy	Lifetime Warranty/Non-operational (Liability Exemption Terms Subject to Official)

engine

Engine Model	SQRE4T15C
---------------------	-----------

engine (continued)

Displacement (mL)	1498
Displacement (L)	1.5
Induction Type	Turbocharging
Cylinder Arrangement	L
Number of Cylinders	4
Valves per Cylinder	4
Compression Ratio	9.5
Valve Train	DOHC
Bore (mm)	77
Stroke (mm)	80.5
Maximum Power (PS)	156
Max Power Speed (rpm)	5500
Max Torque Speed (rpm)	1750-4000
Maximum net power (kW)	108
Fuel Grade	92.
Fuel Delivery System	Multi-point EFI
Cylinder Head Material	Aluminum alloy
Cylinder Block Material	Cast iron
Engine layout	Horizontal
Engine-specific technologies	DVVT

Screen/System

Central control color screen	<ul style="list-style-type: none">• Touch LCD screen
Infotainment Screen Size	<ul style="list-style-type: none">• 10.25 inches
Bluetooth/In-car Phone	<ul style="list-style-type: none">•
Smartphone Integration/Mirroring	<ul style="list-style-type: none">• HUAWEI HiCar support
Voice recognition control system	<ul style="list-style-type: none">• Multimedia system;• Navigation;• Telephone;• Air conditioning;• Sunroof;• Windows
Voice wake-up recognition by region	<ul style="list-style-type: none">• Single area

Body

Length (mm)	4749
Width (mm)	1900

Body (continued)

Height (mm)	1720
Wheelbase (mm)	2745
Front Track (mm)	1610
Rear Track (mm)	1615
Door Opening Type	swing door
Number of Doors	5
Number of Seats	5
Fuel Tank Capacity (L)	57
Trunk volume (L)	-
Drag Coefficient (Cd)	-
Approach Angle (°)	19
Departure Angle (°)	18

Gearbox

Abbreviation	6-speed wet dual-clutch
Number of Gears	6
Transmission Type	Wet Dual-Clutch Transmission (DCT)

Chassis steering

Drive Type	Front-engine, Front-wheel drive (FF)
Front Suspension Type	MacPherson independent suspension
Rear Suspension Type	Multi-link independent suspension
Power Steering Type	Electric power assistance
Vehicle structure	bearing type

Seat Configuration

Seat Material	<ul style="list-style-type: none">• Imitation leather
Main seat adjustment	<ul style="list-style-type: none">• Front and rear adjustment;• Backrest adjustment;• Height adjustment (2-way)
Co-seat adjustment method	<ul style="list-style-type: none">• Front and rear adjustment;• Backrest adjustment
Electric adjustment of driver's seat and passenger seat	-
Front passenger seat rear adjustable buttons	-
Second row seat adjustment	<ul style="list-style-type: none">• Backrest adjustment

Seat Configuration (continued)

Rear seat folding	• Proportional down
Front/rear center armrest	Front •/Rear-
Rear cup holder	-

Active safety

Anti-lock Braking System (ABS)	•
Electronic Brakeforce Distribution (EBD/CBC)	•
Brake Assist System (EBA/BAS/BA)	•
Traction Control System (ASR/TCS/TRC)	•
Electronic Stability Control (ESC/ESP/DSC)	•
Tire Pressure Monitoring System (TPMS)	• Tire pressure display
Seat Belt Reminder	• Main driving position
ISOFIX Child Seat Anchors	•
Lane Departure Warning System (LDWS)	-
Autonomous Emergency Braking (AEB)	-
Driver Fatigue Detection	•
Roll-Over Protection System	•

Air conditioning/refrigerator

Air conditioning temperature control method	• Manual air conditioning
Rear Independent Climate Control	-
Rear seat air vents	•
Temperature zone control	-
Car air purifier	-
In-cabin PM2.5 Filter	•

Passive safety

Driver/passenger airbag	Main •/Deputy •
Front/rear side airbags	Front •/Rear-

Passive safety (continued)

Front/rear head airbags (curtain airbags)	-
--	---

Wheel brake

Front Brake Type	Ventilation disc
Rear Brake Type	Disc
Parking brake type	Electronic Parking
Front Tire Size	235/60 R18
Rear Tire Size	235/60 R18
Spare Tire Size	Not full-size
Spare tire placement	bottom-mounted

Audio/Interior Lighting

Number of speakers	• 4 speakers
---------------------------	--------------

Driving functions

Navigation traffic information display	•
Lane assist	-
Lane Keeping Assist System	-
Cruise control system	• Cruise control
Satellite navigation system	•
Map Brand	• Amap; • Tencent
Parking Assist	-

Exterior lighting

Low beam light source	•LED
High beam light source	•LED
LED daytime running lights	•
Adaptive high and low beam	-
Automatic headlights	•
Height-adjustable headlights	•
Headlight Delay Off	•
Turn signal lamp	•

Exterior mirrors

Exterior mirror function	• Electric adjustment
---------------------------------	-----------------------

Appearance/anti-theft

Rim material	• Aluminum alloy
Electric trunk	-
Electronic engine immobilizer	•
Central locking system in the car	•
Key Type	• Remote key
Keyless start system	•
Keyless entry function	• Driving position
Roof rack	•
Remote start function	•

Skylight/Glass

Sunroof Type	• Openable panoramic sunroof
Front/rear electric windows	Front •/Rear •
One-touch window lifting function	• Full vehicle
Window anti-pinch function	•
Car makeup mirror	• Main driver's lamp; • co-pilot's lamp
Rear wiper	•

Interior and exterior color

Exterior Color	bright moon gray #BEC7D7 Starry Black #000000 Glacier White #F0F0F0 phantom gray #606876
Interior Color	Black/Red:#000000/#FF0000; Black:#000000

Steering wheel/interior mirror

Steering Wheel Material	• Cortex
Steering wheel position adjustment	• Manual up and down front and rear adjustment
Multi-function steering wheel	•
Heated Steering Wheel	-
Steering wheel memory	-
Trip computer display screen	• Color
Full LCD instrument panel	•

Steering wheel/interior mirror (continued)

LCD instrument size	• 10.25 inches
Interior rearview mirror function	• Manual anti-glare
Gear shifting	• Electronic gear shift

Intelligent configuration

Connected Car Services	•
OTA Updates	•
4G/5G Network	•4G
Mobile APP remote function	• Vehicle start; • Vehicle status check/diagnostics; • Vehicle location / find my car; • Service/repair appointment
Wi-Fi hotspots	•

Driving Control

Driving mode switch	• Movement; • Economy
Automatic parking	•
Steep slope descent	•
Hill start assist	•

Driving Hardware

Front/rear parking radar	-
Driving Assistance Camera System	• Reversing image
Number of cameras	• 1

In-car charging

Multimedia/charging port	•USB
Number of USB/Type-C ports	• 2 in the front row/2 in the back row
Luggage compartment 12V power socket	•

"●" = Standard equipment

"-" = Not available

"○" = Optional equipment.

Note: These are Chinese market vehicles. Warranty coverage is not available outside of China.