

Vehicle Detail Report

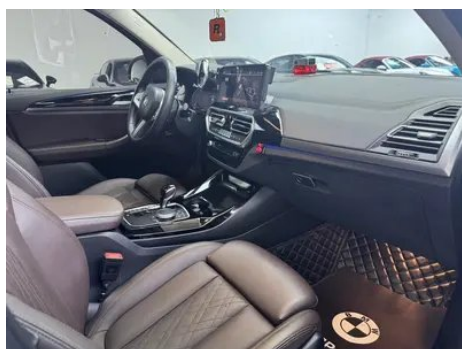
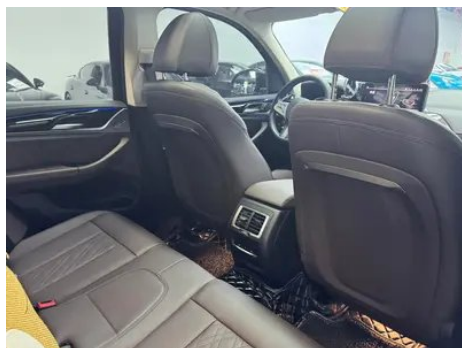
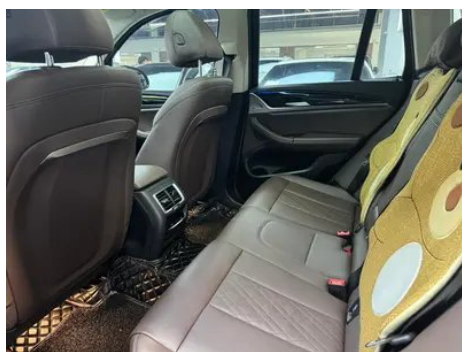
BMW X3 2022 xDrive25i M Sports suit

Basic Information

Brand	BMW
Mileage	48,000 km
Color	Black
First Registration	2023-01-01
Transfer Count	0

Vehicle Images





Vehicle Condition

1. Inner side of right B-pillar, Non-accident-related deformation. 2. Spare wheel well, Water stains.

Configuration Information

Model Information

Model Name	BMW X3 2022 xDrive25i M Sports suit
Launch Date	2021.08

Basic parameters

Vehicle Class	Mid-size SUV
Energy Type	Gasoline
Maximum Power (kW)	135

Basic parameters (continued)

Maximum Torque (N·m)	300
Transmission	8-gear manual integration
Body Type	SUV
Engine	2.0L 184 hp L4
Dimensions (L×W×H) (mm)	4737*1891*1689
Official 0-100 km/h Acceleration (s)	8.9
Top Speed (km/h)	210
Curb Weight (kg)	1857
Maximum Gross Weight (kg)	2510
NEDC Combined Fuel Consumption (L/100km)	8.4
WLTP Combined Fuel Consumption (L/100km)	8.3

engine

Engine Model	B48B20C
Displacement (mL)	1998
Displacement (L)	2.0
Induction Type	Turbocharging
Cylinder Arrangement	L
Number of Cylinders	4
Valves per Cylinder	4
Valve Train	DOHC
Maximum Power (PS)	184
Max Power Speed (rpm)	5000-6500
Max Torque Speed (rpm)	1350-4000
Maximum net power (kW)	135
Fuel Grade	95.
Fuel Delivery System	Direct injection
Cylinder Head Material	Aluminum alloy
Cylinder Block Material	Aluminum alloy
Engine layout	Longitudinal

Screen/System

Screen/System (continued)

Central control color screen	<ul style="list-style-type: none">• Touch LCD screen
Infotainment Screen Size	<ul style="list-style-type: none">• 12.3 inches
Bluetooth/In-car Phone	<ul style="list-style-type: none">•
Smartphone Integration/Mirroring	<ul style="list-style-type: none">• Support CarPlay; • Support CarLife
Voice recognition control system	<ul style="list-style-type: none">• Multimedia system; • Navigation; • Telephone
In-vehicle intelligent system	<ul style="list-style-type: none">• iDrive

Body

Length (mm)	4737
Width (mm)	1891
Height (mm)	1689
Wheelbase (mm)	2864
Front Track (mm)	1600
Rear Track (mm)	1616
Door Opening Type	swing door
Number of Doors	5
Number of Seats	5
Fuel Tank Capacity (L)	65
Trunk volume (L)	-
Drag Coefficient (Cd)	-
Approach Angle (°)	24
Departure Angle (°)	22

Gearbox

Abbreviation	8-gear manual integration
Number of Gears	8
Transmission Type	Automatic Transmission with Manual Mode (AT)

Chassis steering

Drive Type	Front-engine, All-wheel drive (F-AWD)
Four-wheel drive	Timely four-wheel drive
Central differential structure	Multi-plate clutch

Chassis steering (continued)

Front Suspension Type	Dual-ball-joint MacPherson independent suspension
Rear Suspension Type	Multi-link independent suspension
Power Steering Type	Electric power assistance
Vehicle structure	bearing type

Seat Configuration

Seat Material	<ul style="list-style-type: none">• Imitation leather
Main seat adjustment	<ul style="list-style-type: none">• Front and rear adjustment;• Backrest adjustment;• Height adjustment (4-way);• Leg support adjustment
Co-seat adjustment method	<ul style="list-style-type: none">• Front and rear adjustment;• Backrest adjustment;• Height adjustment (4-way);• Leg support adjustment
Electric adjustment of driver's seat and passenger seat	Main •/Deputy •
Front seat functions	<ul style="list-style-type: none">• Heating
Electric seat memory function	<ul style="list-style-type: none">• Driving position
Front passenger seat rear adjustable buttons	-
Second row seat adjustment	<ul style="list-style-type: none">• Backrest adjustment
Rear seat folding	<ul style="list-style-type: none">• Proportional down
Front/rear center armrest	Front •/Rear •
Rear cup holder	<ul style="list-style-type: none">•

Active safety

Anti-lock Braking System (ABS)	<ul style="list-style-type: none">•
Electronic Brakeforce Distribution (EBD/CBC)	<ul style="list-style-type: none">•
Brake Assist System (EBA/BAS/BA)	<ul style="list-style-type: none">•
Traction Control System (ASR/TCS/TRC)	<ul style="list-style-type: none">•
Electronic Stability Control (ESC/ESP/DSC)	<ul style="list-style-type: none">•
Tire Pressure Monitoring System (TPMS)	<ul style="list-style-type: none">• Tire pressure display

Active safety (continued)

Seat Belt Reminder	• Front row
ISOFIX Child Seat Anchors	•
Lane Departure Warning System (LDWS)	-
Autonomous Emergency Braking (AEB)	•
Driver Fatigue Detection	•
Forward Collision Warning (FCW)	•
Emergency Call System (eCall)	•

Air conditioning/refrigerator

Air conditioning temperature control method	• Automatic air conditioning
Rear Independent Climate Control	•
Rear seat air vents	•
Temperature zone control	•
Car air purifier	-
In-cabin PM2.5 Filter	•

Passive safety

Driver/passenger airbag	Main •/Deputy •
Front/rear side airbags	Front •/Rear-
Front/rear head airbags (curtain airbags)	Front •/Rear •
Run-flat tires	•

Wheel brake

Front Brake Type	Ventilation disc
Rear Brake Type	Ventilation disc
Parking brake type	Electronic Parking
Front Tire Size	245/50 R19
Rear Tire Size	245/50 R19
Spare Tire Size	None

Audio/Interior Lighting

Speaker Brand Name	○Harman/Kardon (USD 1,471)
Number of speakers	• 6 horns; ○ 16 horns

Audio/Interior Lighting (continued)

Interior ambient lighting	• 11 colors
----------------------------------	-------------

Driving functions

Navigation traffic information display	•
Lane assist	○
Lane Keeping Assist System	-
Cruise control system	• Cruise control
Satellite navigation system	•
Rear Cross Traffic Alert	○
Road traffic sign recognition	○
Tracking reverse	○
Parking Assist	○

Exterior lighting

Low beam light source	•LED
High beam light source	•LED
LED daytime running lights	•
Adaptive high and low beam	•
Automatic headlights	•
Height-adjustable headlights	•
Headlight Delay Off	•
Turn headlights	•

Exterior mirrors

Exterior mirror function	• Electric adjustment; • Electric folding; • Mirror memory function; • Heated mirrors; • Automatic downfolding on reverse; • Automatic folding upon locking; ○ Auto-dimming (USD 368)
---------------------------------	---

Appearance/anti-theft

Rim material	• Aluminum alloy
Electric trunk	•
Electronic engine immobilizer	•

Appearance/anti-theft (continued)

Central locking system in the car	<ul style="list-style-type: none">•
Key Type	<ul style="list-style-type: none">• Remote key
Keyless start system	<ul style="list-style-type: none">•
Keyless entry function	<input type="radio"/> Full car (USD 809)
Appearance Kit	<ul style="list-style-type: none">• Sports style
Hands-free Trunk	<input type="radio"/>
Electric trunk position memory	<ul style="list-style-type: none">•
Roof rack	<ul style="list-style-type: none">•
Remote start function	<ul style="list-style-type: none">•

Skylight/Glass

Sunroof Type	<ul style="list-style-type: none">• Openable panoramic sunroof
Front/rear electric windows	Front <input type="checkbox"/> /Rear <input type="checkbox"/>
One-touch window lifting function	<ul style="list-style-type: none">• Full car
Window anti-pinch function	<ul style="list-style-type: none">•
Car makeup mirror	<ul style="list-style-type: none">• Main driver's lamp;• co-pilot's lamp
Rear wiper	<ul style="list-style-type: none">•
Rain sensor wiper function	<ul style="list-style-type: none">• Rainfall-sensing

Interior and exterior color

Exterior Color	Fragrant red:#810B17; Quantum blue:#273F7C; Ore white:#E7E7E7; Cashmi silver:#C6C1B4; Mysterious gray:#262626; Carbon black:#232A30
Interior Color	Black/Mocha:#000000/#423534; Black:#000000; Black/Volcanic Red:#000000/#8A3D47

Steering wheel/interior mirror

Steering Wheel Material	<ul style="list-style-type: none">• Leather
Steering wheel position adjustment	<ul style="list-style-type: none">• Manual up and down front and rear adjustment
Multi-function steering wheel	<ul style="list-style-type: none">•
Heated Steering Wheel	-

Steering wheel/interior mirror (continued)

Steering wheel memory	-
Trip computer display screen	• Color
Full LCD instrument panel	•
LCD instrument size	• 12.3 inches
Interior rearview mirror function	• Automatic anti-glare
Gear shifting	• Electronic gear shift
HUD Head Up Digital Display	○(USD 1,471)
ETC Device	○(USD 147)

Intelligent configuration

Connected Car Services	•
OTA Updates	•
4G/5G Network	•4G
Mobile APP remote function	• Door control; • Vehicle startup; • Air conditioning control; • Vehicle condition inquiry/diagnosis; • Vehicle location/vehicle search; • Vehicle owner service (searching for charging piles, gas stations, parking lots, etc.); • Appointment maintenance/repair
Wi-Fi hotspots	○

Driving Control

Driving mode switch	• Sport; • Economy; • Standard/Comfort; • Customization/Personalization
Automatic parking	•
Steep slope descent	•
Hill start assist	•
Engine start-stop technology	•

Driving Hardware

Front/rear parking radar	Front •/Rear •
Driving Assistance Camera System	• Reversing image

In-car charging

Multimedia/charging port	•USB; •Type-C
---------------------------------	---------------

In-car charging (continued)

Number of USB/Type-C ports	• 2 in the front row/2 in the back row
Mobile phone wireless charging function	○ Front row

Optional Package

Optional Package	Entertainment package 1(USD 1,471; Including: Harman/Kardon Harman Kardon high-end sound system, mobile phone wireless charging, Wi-Fi hot spots)
-------------------------	---

"●" = Standard equipment

"-" = Not available

"○" = Optional equipment.

Note: These are Chinese market vehicles. Warranty coverage is not available outside of China.