

Vehicle Detail Report

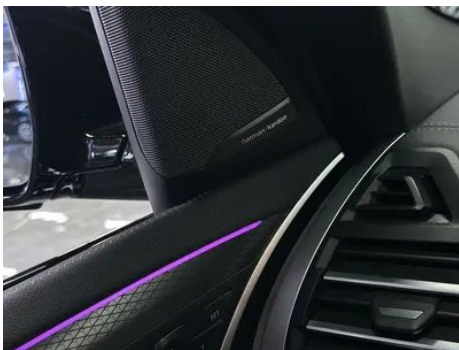
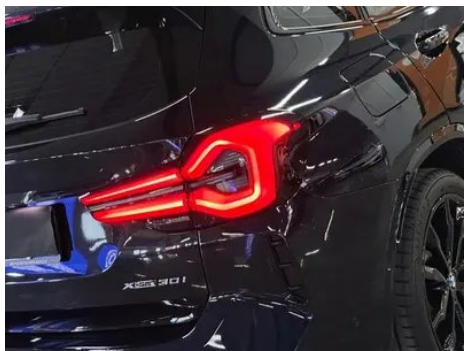
BMW X3 2023 xDrive30i Premium Class M Obsidian Night Suit

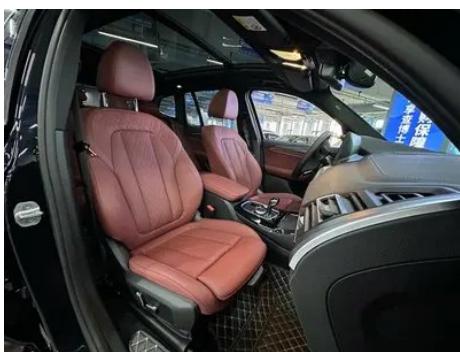
Basic Information

Brand	BMW
Mileage	38,900 km
Color	Black
First Registration	2024-07-01
Transfer Count	0

Vehicle Images







Vehicle Condition

1. Original metal body panels with factory paint.

Configuration Information

Model Information

Model Name	BMW X3 2023 xDrive30i Premium Class M Obsidian Night Suit
Launch Date	2023.05

Basic parameters

Vehicle Class	Mid-size SUV
Energy Type	Gasoline
Maximum Power (kW)	180
Maximum Torque (N·m)	350
Transmission	8-gear manual integration
Body Type	SUV
Engine	2.0T 245 horsepower L4
Dimensions (L×W×H) (mm)	4737*1891*1689
Official 0-100 km/h Acceleration (s)	6.8
Top Speed (km/h)	230
Curb Weight (kg)	1880
Maximum Gross Weight (kg)	2510
WLTP Combined Fuel Consumption (L/100km)	8.5

engine

Engine Model	B48B20G
Displacement (mL)	1998
Displacement (L)	2.0
Induction Type	Turbocharging
Cylinder Arrangement	L

engine (continued)

Number of Cylinders	4
Valves per Cylinder	4
Valve Train	DOHC
Maximum Power (PS)	245
Max Power Speed (rpm)	5000-6500
Max Torque Speed (rpm)	1450-4800
Maximum net power (kW)	180
Fuel Grade	95.
Fuel Delivery System	Direct injection
Cylinder Head Material	Aluminum alloy
Cylinder Block Material	Aluminum alloy
Engine layout	Longitudinal

Screen/System

Central control color screen	<ul style="list-style-type: none">• Touch LCD screen
Infotainment Screen Size	<ul style="list-style-type: none">• 12.3 inches
Bluetooth/In-car Phone	<ul style="list-style-type: none">•
Smartphone Integration/Mirroring	<ul style="list-style-type: none">• Apple CarPlay support;• Baidu CarLife support
Voice recognition control system	<ul style="list-style-type: none">• Multimedia system;• Navigation;• Telephone
In-vehicle intelligent system	<ul style="list-style-type: none">• iDrive

Body

Length (mm)	4737
Width (mm)	1891
Height (mm)	1689
Wheelbase (mm)	2864
Front Track (mm)	1610
Rear Track (mm)	1594
Door Opening Type	swing door
Number of Doors	5
Number of Seats	5
Fuel Tank Capacity (L)	65
Trunk volume (L)	-

Body (continued)

Drag Coefficient (Cd)	-
Approach Angle (°)	24
Departure Angle (°)	22

Gearbox

Abbreviation	8-gear manual integration
Number of Gears	8
Transmission Type	Automatic Transmission with Manual Mode (AT)

Chassis steering

Drive Type	Front-engine, All-wheel drive (F-AWD)
Four-wheel drive	Timely four-wheel drive
Central differential structure	Multi-plate clutch
Front Suspension Type	Dual-ball-joint MacPherson independent suspension
Rear Suspension Type	Multi-link independent suspension
Power Steering Type	Electric power assistance
Vehicle structure	bearing type

Seat Configuration

Seat Material	• Imitation leather
Main seat adjustment	• Front and rear adjustment; • Backrest adjustment; • Height adjustment (4-way); • Leg rest adjustment; • Lumbar support (4-way)
Co-seat adjustment method	• Front and rear adjustment; • Backrest adjustment; • Height adjustment (4-way); • Leg support adjustment
Electric adjustment of driver's seat and passenger seat	Main •/Deputy •
Front seat functions	• Heating
Electric seat memory function	• Driving position
Front passenger seat rear adjustable buttons	-
Second row seat adjustment	• Backrest adjustment
Rear seat folding	• Proportional down

Seat Configuration (continued)

Front/rear center armrest	Front •/Rear •
Rear cup holder	•

Active safety

Anti-lock Braking System (ABS)	•
Electronic Brakeforce Distribution (EBD/CBC)	•
Brake Assist System (EBA/BAS/BA)	•
Traction Control System (ASR/TCS/TRC)	•
Electronic Stability Control (ESC/ESP/DSC)	•
Tire Pressure Monitoring System (TPMS)	• Tire pressure display
Seat Belt Reminder	• Front row
ISOFIX Child Seat Anchors	•
Lane Departure Warning System (LDWS)	•
Autonomous Emergency Braking (AEB)	•
Driver Fatigue Detection	•
Forward Collision Warning (FCW)	•
Emergency Call System (eCall)	•
Built-in Dashcam	•

Air conditioning/refrigerator

Air conditioning temperature control method	• Automatic air conditioning
Rear Independent Climate Control	•
Rear seat air vents	•
Temperature zone control	•
Car air purifier	-
In-cabin PM2.5 Filter	•

Passive safety

Driver/passenger airbag	Main •/Deputy •
--------------------------------	-----------------

Passive safety (continued)

Front/rear side airbags	Front •/Rear-
Front/rear head airbags (curtain airbags)	Front •/Rear •
Run-flat tires	•

Wheel brake

Front Brake Type	Ventilation disc
Rear Brake Type	Ventilation disc
Parking brake type	Electronic Parking
Front Tire Size	245/45 R20
Rear Tire Size	275/40 R20
Spare Tire Size	None

Audio/Interior Lighting

Speaker Brand Name	• Harman/Kardon Harman Kardon
Number of speakers	• 16 speakers
Interior ambient lighting	• 11 colors

Driving functions

Navigation traffic information display	•
Lane assist	•
Lane Keeping Assist System	•
Cruise control system	• Full speed adaptive cruise
Satellite navigation system	•
Driving assistance level	•L2
Rear Cross Traffic Alert	•
Lane centering	•
Road traffic sign recognition	•
Tracking reverse	•
Parking Assist	•
Lane Change Assist	•

Exterior lighting

Low beam light source	•LED
High beam light source	•LED

Exterior lighting (continued)

LED daytime running lights	•
Adaptive high and low beam	•
Automatic headlights	•
Height-adjustable headlights	•
Headlight Delay Off	•
Turn headlights	•

Exterior mirrors

Exterior mirror function	• Electric adjustment; • Electric folding; • Rearview mirror memory; • Rearview mirror heating; • Automatic downturning when reversing; • Automatic folding when locked; • Automatic anti-glare
---------------------------------	---

Appearance/anti-theft

Rim material	• Aluminum alloy
Electric trunk	•
Electronic engine immobilizer	•
Central locking system in the car	•
Key Type	• Remote key
Keyless start system	•
Keyless entry function	• Full vehicle
Appearance Kit	• Sports style
Hands-free Trunk	•
Electric trunk position memory	•
Roof rack	•
Remote start function	•

Skylight/Glass

Sunroof Type	• Openable panoramic sunroof
Front/rear electric windows	Front •/Rear •
One-touch window lifting function	• Full vehicle
Window anti-pinch function	•

Skylight/Glass (continued)

Car makeup mirror	<ul style="list-style-type: none">• Main driver's lamp; • co-pilot's lamp
Rear wiper	<ul style="list-style-type: none">•
Rain sensor wiper function	<ul style="list-style-type: none">• Rainfall-sensing

Interior and exterior color

Exterior Color	Ore White #E7E7E7 Mysterious Gray #262626 Carbon black #232A30 Fragrant Red #810B17 cashmi silver #C6C1B4 Quantum Blue #273F7C
Interior Color	Black/Volcanic Red:#000000/#8A3D47; Black:#000000; Black/Mocha:#000000/#423534

Steering wheel/interior mirror

Steering Wheel Material	<ul style="list-style-type: none">• Leather
Steering wheel position adjustment	<ul style="list-style-type: none">• Manual up and down front and rear adjustment
Multi-function steering wheel	<ul style="list-style-type: none">•
Heated Steering Wheel	-
Steering wheel memory	-
Trip computer display screen	<ul style="list-style-type: none">• Color
Full LCD instrument panel	<ul style="list-style-type: none">•
LCD instrument size	<ul style="list-style-type: none">• 12.3 inches
Interior rearview mirror function	<ul style="list-style-type: none">• Automatic anti-glare
Gear shifting	<ul style="list-style-type: none">• Electronic gear shift
HUD Head Up Digital Display	<ul style="list-style-type: none">•
ETC Device	○(USD 147)
Steering Wheel Shift Paddles	<ul style="list-style-type: none">•

Intelligent configuration

Connected Car Services	<ul style="list-style-type: none">•
OTA Updates	<ul style="list-style-type: none">•
4G/5G Network	<ul style="list-style-type: none">•4G

Intelligent configuration (continued)

Mobile APP remote function	<ul style="list-style-type: none">• Door control;• Vehicle start;• Climate control;• Vehicle status check/diagnostics;• Vehicle location / find my car;• Owner services (charging stations, gas stations, parking, etc.);• Service/repair appointment
Wi-Fi hotspots	<ul style="list-style-type: none">•

Driving Control

Driving mode switch	<ul style="list-style-type: none">• Sport;• Economy;• Standard/Comfort;• Customization/Personalization
Automatic parking	<ul style="list-style-type: none">•
Steep slope descent	<ul style="list-style-type: none">•
Hill start assist	<ul style="list-style-type: none">•
Engine start-stop technology	<ul style="list-style-type: none">•

Driving Hardware

Front/rear parking radar	Front •/Rear •
Driving Assistance Camera System	<ul style="list-style-type: none">• 360-degree panoramic image
Number of ultrasonic radars	<ul style="list-style-type: none">• 12

In-car charging

Multimedia/charging port	<ul style="list-style-type: none">•USB;•Type-C
Number of USB/Type-C ports	<ul style="list-style-type: none">• 2 in the front row/2 in the back row
Mobile phone wireless charging function	<ul style="list-style-type: none">• Front row

"●" = Standard equipment

"_" = Not available

"○" = Optional equipment.

Note: These are Chinese market vehicles. Warranty coverage is not available outside of China.