

Vehicle Detail Report

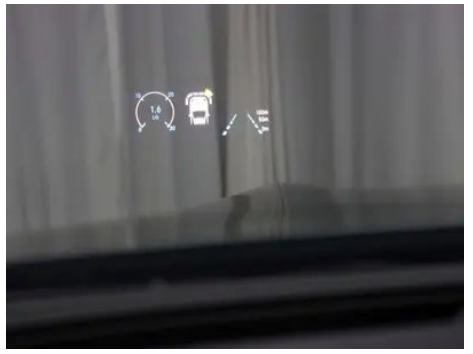
Mercedes-Benz AMG GT 2023 AMG GT 50 Four-door sports car

Basic Information

| | |
|--------------------|---------------|
| Brand | Mercedes-Benz |
| Mileage | 29,000 km |
| Color | Dark gray |
| First Registration | 2024-07-01 |
| Transfer Count | 1 |

Vehicle Images







Vehicle Condition

1. Original metal body panels with factory paint.

Configuration Information

Model Information

| | |
|--------------------|--|
| Model Name | Mercedes-Benz AMG GT 2023 AMG GT 50 Four-door sports car |
| Launch Date | 2022.12 |

Basic parameters

| | |
|---|-----------------------------------|
| Vehicle Class | Sports car |
| Energy Type | Gasoline + 48V Mild Hybrid System |
| Maximum Power (kW) | 270 |
| Maximum Torque (N·m) | 500 |
| Transmission | 9-gear manual integration |
| Body Type | Liftback |
| Engine | 3.0T 367 horsepower L6 |
| Dimensions (L×W×H) (mm) | 5054*1953*1455 |
| Official 0-100 km/h Acceleration (s) | 5 |
| Top Speed (km/h) | 270 |
| Curb Weight (kg) | 2024 |
| Maximum Gross Weight (kg) | 2495 |
| WLTP Combined Fuel Consumption (L/100km) | 8.99 |

engine

| | |
|-----------------------------|------------------------------|
| Engine Model | 256 930 |
| Displacement (mL) | 2999 |
| Displacement (L) | 3.0 |
| Induction Type | Turbo electric supercharging |
| Cylinder Arrangement | L |

engine (continued)

| | |
|--------------------------------|------------------|
| Number of Cylinders | 6 |
| Valves per Cylinder | 4 |
| Valve Train | DOHC |
| Maximum Power (PS) | 367 |
| Max Power Speed (rpm) | 5500-6100 |
| Max Torque Speed (rpm) | 1800-4500 |
| Maximum net power (kW) | 270 |
| Fuel Grade | 95. |
| Fuel Delivery System | Direct injection |
| Cylinder Head Material | Aluminum alloy |
| Cylinder Block Material | Aluminum alloy |
| Engine layout | Longitudinal |

Screen/System

| | |
|--|--|
| Central control color screen | <ul style="list-style-type: none">• Ordinary LCD screen |
| Infotainment Screen Size | <ul style="list-style-type: none">• 12.3 inches |
| Bluetooth/In-car Phone | <ul style="list-style-type: none">• |
| Smartphone Integration/ Mirroring | <ul style="list-style-type: none">• Apple CarPlay support;• Android Auto support |
| Voice recognition control system | <ul style="list-style-type: none">• Multimedia system;• Navigation;• Telephone;• Air conditioning |
| In-vehicle intelligent system | <ul style="list-style-type: none">• MBUX |
| Gesture Control | ○(USD 632) |

Body

| | |
|-------------------------------|------------|
| Length (mm) | 5054 |
| Width (mm) | 1953 |
| Height (mm) | 1455 |
| Wheelbase (mm) | 2951 |
| Front Track (mm) | - |
| Rear Track (mm) | - |
| Door Opening Type | swing door |
| Number of Doors | 5 |
| Number of Seats | 4 |
| Fuel Tank Capacity (L) | 80 |

Body (continued)

| | |
|------------------------------|------|
| Trunk volume (L) | - |
| Drag Coefficient (Cd) | - |
| Approach Angle (°) | 11.7 |
| Departure Angle (°) | 14.6 |

Gearbox

| | |
|--------------------------|--|
| Abbreviation | 9-gear manual integration |
| Number of Gears | 9 |
| Transmission Type | Automatic Transmission with Manual Mode (AT) |

Chassis steering

| | |
|------------------------------|--|
| Drive Type | Front-engine, Rear-wheel drive (FR) |
| Front Suspension Type | Double wishbone independent suspension |
| Rear Suspension Type | Double wishbone independent suspension |
| Power Steering Type | Electro-hydraulic power steering |
| Vehicle structure | bearing type |

Seat Configuration

| | |
|--|--|
| Seat Material | • Leather |
| Main seat adjustment | • Front and rear adjustment; • Backrest adjustment; • Height adjustment (4-way); • Leg rest adjustment; • Lumbar support (4-way) |
| Co-seat adjustment method | • Front and rear adjustment; • Backrest adjustment; • Height adjustment (4-way); • Leg rest adjustment; • Lumbar support (4-way) |
| Electric adjustment of driver's seat and passenger seat | Main •/Deputy • |
| Front seat functions | • Heating Ventilation (11100 yuan) |
| Electric seat memory function | ○ Driving position; ○ Deputy driving position |
| Front passenger seat rear adjustable buttons | - |
| Rear seat folding | ○ Proportional folding |
| Front/rear center armrest | Front •/Rear ○ |
| Rear cup holder | • |

Seat Configuration (continued)

| | |
|-------------------------------------|---------------------|
| Second row seat functions | Heating (5200 yuan) |
| Sports style seats | • |
| Second row independent seats | • |

Active safety

| | |
|---|-------------------------|
| Anti-lock Braking System (ABS) | • |
| Electronic Brakeforce Distribution (EBD/CBC) | • |
| Brake Assist System (EBA/BAS/BA) | • |
| Traction Control System (ASR/TCS/TRC) | • |
| Electronic Stability Control (ESC/ESP/DSC) | • |
| Tire Pressure Monitoring System (TPMS) | • Tire pressure display |
| Seat Belt Reminder | • Full vehicle |
| ISOFIX Child Seat Anchors | • |
| Lane Departure Warning System (LDWS) | ○ |
| Autonomous Emergency Braking (AEB) | • |
| Driver Fatigue Detection | • |
| Forward Collision Warning (FCW) | • |
| Emergency Call System (eCall) | • |
| Built-in Dashcam | ○(USD 426) |

Air conditioning/refrigerator

| | |
|--|------------------------------|
| Air conditioning temperature control method | • Automatic air conditioning |
| Rear Independent Climate Control | ○(USD 1,794) |
| Rear seat air vents | • |
| Temperature zone control | • |
| Car air purifier | - |
| In-cabin PM2.5 Filter | • |

Air conditioning/refrigerator (continued)

| | |
|-------------------------------|---|
| Air quality monitoring | • |
|-------------------------------|---|

Passive safety

| | |
|--|---------------------------------------|
| Driver/passenger airbag | Main •/Deputy • |
| Front/rear side airbags | Front/rear rear side airbag (USD 809) |
| Front/rear head airbags (curtain airbags) | Front •/Rear • |
| Knee airbag | • Driver's knee airbag |
| Passive pedestrian protection | • |

Wheel brake

| | |
|---------------------------|--------------------|
| Front Brake Type | Ventilation disc |
| Rear Brake Type | Ventilation disc |
| Parking brake type | Electronic Parking |
| Front Tire Size | 255/45 R19 |
| Rear Tire Size | 285/40 R19 |
| Spare Tire Size | - |

Audio/Interior Lighting

| | |
|----------------------------------|--|
| Speaker Brand Name | <input type="radio"/> Burmester Voices of Berlin |
| Number of speakers | <input type="radio"/> 14 horn; • 10-11 horn |
| Interior ambient lighting | • 64 colors |

Driving functions

| | |
|---|--|
| Navigation traffic information display | • |
| Lane assist | • |
| Lane Keeping Assist System | <input type="radio"/> |
| Cruise control system | • Cruise control; <input type="radio"/> Full speed adaptive cruise |
| Satellite navigation system | • |
| Driving assistance level | <input type="radio"/> L2(USD 5,118) |
| Lane centering | <input type="radio"/> |
| Road traffic sign recognition | • |
| Map Brand | • Gaud |
| AR real-time navigation | <input type="radio"/> (USD 824) |

Driving functions (continued)

| | |
|-----------------------|---|
| Parking Assist | • |
|-----------------------|---|

Exterior lighting

| | |
|-------------------------------------|----------------------------|
| Low beam light source | •LED |
| High beam light source | •LED |
| LED daytime running lights | • |
| Adaptive high and low beam | • |
| Automatic headlights | • |
| Height-adjustable headlights | • |
| Headlight Delay Off | • |
| Lighting features | • MULTIBEAM LED headlights |
| Turn headlights | • |

Exterior mirrors

| | |
|---------------------------------|---|
| Exterior mirror function | • Electric adjustment; • Electric folding; ○ Rearview mirror memory; • Rearview mirror heating; ○ Automatic downturning when reversing; • Automatic folding when locked; • Automatic anti-glare |
|---------------------------------|---|

Appearance/anti-theft

| | |
|--|----------------------------|
| Rim material | • Aluminum alloy |
| Electric trunk | • |
| Electronic engine immobilizer | • |
| Central locking system in the car | • |
| Key Type | • Remote key |
| Keyless start system | • |
| Keyless entry function | ○ Full vehicle |
| Appearance Kit | ○ Sports style |
| Hands-free Trunk | ○ |
| Remote start function | • |
| Electric door closing | ○ Full vehicle (USD 1,162) |
| Frameless door design | • |
| Electric spoiler | • |

Skylight/Glass

Skylight/Glass (continued)

| | |
|--|---|
| Sunroof Type | • Sectional unopenable skylight |
| Front/rear electric windows | Front •/Rear • |
| One-touch window lifting function | • Full vehicle |
| Window anti-pinch function | • |
| Car makeup mirror | • Main driver's lamp; • co-pilot's lamp |
| Rear wiper | - |
| Rain sensor wiper function | • Rainfall-sensing |

Interior and exterior color

| | |
|-----------------------|--|
| Exterior Color | MATTE GRAPHITE GREY #7A8493 Matte Sea Night Blue #295095 Diamond White #EFEBEA Graphite gray #7D8791 Arctic White #FFFFFF obsidian black #000000 matte moonstone gray #616161 sea night blue #295095 Lava Red #68211F Spacetime Silver #9DA2A9 Matte Bronze Orange #C64D32 |
| Interior Color | Black #000000 Black hot red #000000 #9B1C29 Black truffle brown #000000 #5A5556 Black Saddle Brown #000000 #543923 Black Pearlescent Titanium Grey #000000 #5E5F61 magma ash Macchiato rice #323740 #8A8888 |

Steering wheel/interior mirror

| | |
|---|--|
| Steering Wheel Material | • Leather ○Alcantara Suede leather (6100 yuan) |
| Steering wheel position adjustment | • Manual up and down front and rear adjustment; ○ Electric up and down front and rear adjustment |
| Multi-function steering wheel | • |
| Heated Steering Wheel | - |
| Steering wheel memory | ○ |
| Trip computer display screen | • Color |
| Full LCD instrument panel | • |
| LCD instrument size | • 12.3 inches |

Steering wheel/interior mirror (continued)

| | |
|--|---|
| Interior rearview mirror function | <ul style="list-style-type: none">• Automatic anti-glare |
| Gear shifting | <ul style="list-style-type: none">• Electronic gear shift |
| HUD Head Up Digital Display | ○ |
| ETC Device | ○(USD 441) |
| Steering Wheel Shift Paddles | <ul style="list-style-type: none">• |

Intelligent configuration

| | |
|-----------------------------------|--|
| Connected Car Services | <ul style="list-style-type: none">• |
| OTA Updates | <ul style="list-style-type: none">• |
| 4G/5G Network | <ul style="list-style-type: none">•4G |
| Mobile APP remote function | <ul style="list-style-type: none">• Door control;• Vehicle start;• Climate control;• Vehicle status check/diagnostics;• Vehicle location / find my car |

Driving Control

| | |
|-------------------------------------|--|
| Driving mode switch | <ul style="list-style-type: none">• Sport;• Standard/Comfort;• Customize/Personalize |
| Automatic parking | <ul style="list-style-type: none">• |
| Hill start assist | <ul style="list-style-type: none">• |
| Variable suspension function | <ul style="list-style-type: none">• Suspension damping adjustment |
| Engine start-stop technology | <ul style="list-style-type: none">• |

Driving Hardware

| | |
|---|---|
| Front/rear parking radar | Front •/Rear • |
| Driving Assistance Camera System | <ul style="list-style-type: none">• Reversing image;○ 360-degree panoramic image (USD 765) |

In-car charging

| | |
|--|--|
| Multimedia/charging port | <ul style="list-style-type: none">•USB;•Type-C |
| Number of USB/Type-C ports | <ul style="list-style-type: none">• 2 in the front row/2 in the back row |
| Mobile phone wireless charging function | Front row (2900 yuan) ○ Rear row |
| Luggage compartment 12V power socket | <ul style="list-style-type: none">• |

Optional Package

Optional Package (continued)

| Optional Package | |
|------------------|--|
| | AMG Select Set 3 (32000 yuan Contains head-up display Keyless entry comfort components (KEYLESS-GO) 360° Camera Burmester® Surround stereo sound system) AMG Select Set 1 (65000 yuan Contains AMG High performance exhaust system variable sound level AMG Carbon fiber appearance components II) AMG Select Set 2 (69000 yuan Contains Black (801) First Class Rear Independent Seats Memory components Convenient loading (EASY-PACK) Quick folding Multi-zone intelligent air conditioning (THERMOTRONIC) |

"●" = Standard equipment

"-" = Not available

"○" = Optional equipment.

Note: These are Chinese market vehicles. Warranty coverage is not available outside of China.