

# Vehicle Detail Report

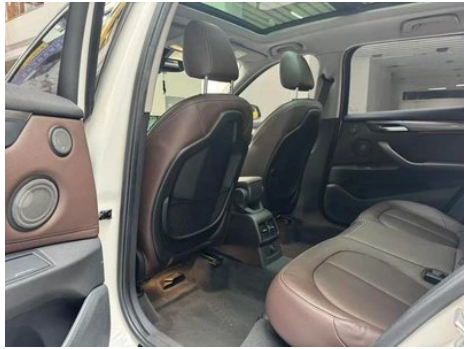
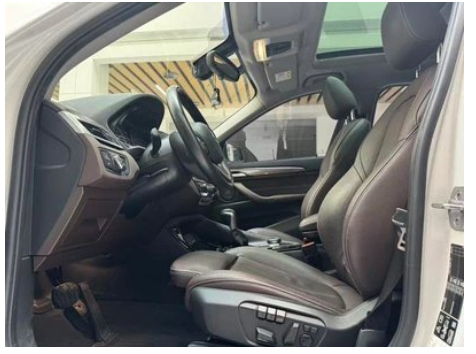
BMW X1 2018 xDrive20Li Luxury type

## Basic Information

Brand	BMW
Mileage	101,000 km
Color	White
First Registration	2017-10-01
Transfer Count	1

## Vehicle Images







## Vehicle Condition

1. Right front strut tower, Deformation. 2. Right front frame rail, Scratch. 3. Right rear frame rail, Deformation. 4. Rear body panel, Deformation. 5. Airbag, Signs of removal, Replaced, Recall.

## Configuration Information

### Model Information

<b>Model Name</b>	BMW X1 2018 xDrive20Li Luxury Edition
<b>Launch Date</b>	2017.07

### Basic parameters

<b>Vehicle Class</b>	Compact SUV
<b>Energy Type</b>	Gasoline
<b>Maximum Power (kW)</b>	141
<b>Maximum Torque (N·m)</b>	280
<b>Transmission</b>	8-gear manual integration
<b>Body Type</b>	SUV
<b>Engine</b>	2.0L 192 hp L4
<b>Dimensions (L×W×H) (mm)</b>	4565*1821*1624
<b>Official 0-100 km/h Acceleration (s)</b>	-
<b>Top Speed (km/h)</b>	-
<b>Curb Weight (kg)</b>	1675
<b>Maximum Gross Weight (kg)</b>	-
<b>NEDC Combined Fuel Consumption (L/100km)</b>	7.1

### engine

<b>Engine Model</b>	-
<b>Displacement (mL)</b>	1998
<b>Displacement (L)</b>	2.0
<b>Induction Type</b>	Turbocharging

## engine (continued)

<b>Cylinder Arrangement</b>	L
<b>Number of Cylinders</b>	4
<b>Valves per Cylinder</b>	4
<b>Valve Train</b>	DOHC
<b>Bore (mm)</b>	82
<b>Stroke (mm)</b>	94.6
<b>Maximum Power (PS)</b>	192
<b>Max Power Speed (rpm)</b>	5000-6000
<b>Max Torque Speed (rpm)</b>	1250-4600
<b>Maximum net power (kW)</b>	-
<b>Fuel Grade</b>	95.
<b>Fuel Delivery System</b>	Direct injection
<b>Cylinder Head Material</b>	Aluminum alloy
<b>Cylinder Block Material</b>	Aluminum alloy

## Screen/System

<b>Central control color screen</b>	<ul style="list-style-type: none"><li>•</li></ul>
<b>Infotainment Screen Size</b>	<ul style="list-style-type: none"><li>• 8.8 inches</li></ul>
<b>Bluetooth/In-car Phone</b>	<ul style="list-style-type: none"><li>•</li></ul>
<b>In-car CD/DVD Player</b>	<ul style="list-style-type: none"><li>• Single disc CD</li></ul>

## Body

<b>Length (mm)</b>	4565
<b>Width (mm)</b>	1821
<b>Height (mm)</b>	1624
<b>Wheelbase (mm)</b>	2780
<b>Front Track (mm)</b>	1561
<b>Rear Track (mm)</b>	1562
<b>Door Opening Type</b>	-
<b>Number of Doors</b>	5
<b>Number of Seats</b>	5
<b>Fuel Tank Capacity (L)</b>	61
<b>Trunk volume (L)</b>	505
<b>Drag Coefficient (Cd)</b>	-

## Gearbox

## Gearbox (continued)

<b>Abbreviation</b>	8-gear manual integration
<b>Number of Gears</b>	8
<b>Transmission Type</b>	Automatic Transmission with Manual Mode (AT)

## Chassis steering

<b>Drive Type</b>	Front-engine, All-wheel drive (F-AWD)
<b>Four-wheel drive</b>	Timely four-wheel drive
<b>Central differential structure</b>	Multi-plate clutch
<b>Front Suspension Type</b>	MacPherson independent suspension
<b>Rear Suspension Type</b>	Multi-link independent suspension
<b>Power Steering Type</b>	Electric power assistance
<b>Vehicle structure</b>	bearing type

## Seat Configuration

<b>Seat Material</b>	<ul style="list-style-type: none"><li>• Leather</li></ul>
<b>Main seat adjustment</b>	<ul style="list-style-type: none"><li>• Front and rear adjustment;</li><li>• Backrest adjustment;</li><li>• Height adjustment (2-way);</li><li>• Height adjustment (4-way)</li></ul>
<b>Co-seat adjustment method</b>	<ul style="list-style-type: none"><li>• Front and rear adjustment;</li><li>• Backrest adjustment</li></ul>
<b>Electric adjustment of driver's seat and passenger seat</b>	Main •/Deputy •
<b>Front seat functions</b>	<ul style="list-style-type: none"><li>• Heating</li></ul>
<b>Electric seat memory function</b>	<ul style="list-style-type: none"><li>•</li></ul>
<b>Front passenger seat rear adjustable buttons</b>	-
<b>Second row seat adjustment</b>	<ul style="list-style-type: none"><li>• Front and rear adjustment;</li><li>• Backrest adjustment</li></ul>
<b>Rear seat folding</b>	<ul style="list-style-type: none"><li>• Proportional down</li></ul>
<b>Front/rear center armrest</b>	Front •/Rear •
<b>Rear cup holder</b>	<ul style="list-style-type: none"><li>•</li></ul>
<b>Sports style seats</b>	<ul style="list-style-type: none"><li>•</li></ul>

## Active safety

<b>Anti-lock Braking System (ABS)</b>	<ul style="list-style-type: none"><li>•</li></ul>
---------------------------------------	---

## Active safety (continued)

<b>Electronic Brakeforce Distribution (EBD/CBC)</b>	•
<b>Brake Assist System (EBA/BAS/BA)</b>	•
<b>Traction Control System (ASR/TCS/TRC)</b>	•
<b>Electronic Stability Control (ESC/ESP/DSC)</b>	•
<b>Tire Pressure Monitoring System (TPMS)</b>	•
<b>Seat Belt Reminder</b>	•
<b>ISOFIX Child Seat Anchors</b>	•
<b>Lane Departure Warning System (LDWS)</b>	○
<b>Autonomous Emergency Braking (AEB)</b>	-
<b>Driver Fatigue Detection</b>	-
<b>Emergency Call System (eCall)</b>	•

## Air conditioning/refrigerator

<b>Air conditioning temperature control method</b>	• Automatic air conditioning
<b>Rear Independent Climate Control</b>	-
<b>Rear seat air vents</b>	•
<b>Temperature zone control</b>	•
<b>Car air purifier</b>	-
<b>In-cabin PM2.5 Filter</b>	-

## Passive safety

<b>Driver/passenger airbag</b>	Main •/Deputy •
<b>Front/rear side airbags</b>	Front •/Rear-
<b>Front/rear head airbags (curtain airbags)</b>	Front •/Rear •
<b>Run-flat tires</b>	•

## Wheel brake

<b>Front Brake Type</b>	Ventilation disc
<b>Rear Brake Type</b>	Disc
<b>Parking brake type</b>	Electronic Parking

## Wheel brake (continued)

<b>Front Tire Size</b>	225/50 R18
<b>Rear Tire Size</b>	225/50 R18
<b>Spare Tire Size</b>	None

## Audio/Interior Lighting

<b>Speaker Brand Name</b>	○ Harman/Kardon Harman Kardon (USD 676)
<b>Number of speakers</b>	○ ≥ 12 horns; • 8-9 horns
<b>Interior ambient lighting</b>	•

## Driving functions

<b>Navigation traffic information display</b>	-
<b>Lane assist</b>	-
<b>Lane Keeping Assist System</b>	-
<b>Cruise control system</b>	• Cruise control
<b>Satellite navigation system</b>	•
<b>Parking Assist</b>	•

## Exterior lighting

<b>Low beam light source</b>	•LED
<b>High beam light source</b>	•LED
<b>LED daytime running lights</b>	•
<b>Adaptive high and low beam</b>	-
<b>Automatic headlights</b>	•
<b>Front fog lights</b>	•
<b>Height-adjustable headlights</b>	•
<b>Headlight Delay Off</b>	•

## Exterior mirrors

<b>Exterior mirror function</b>	• Electric adjustment; • Electric folding; • Mirror memory function; • Heated mirrors; ○ Auto-dimming (USD 647)
---------------------------------	---

## Appearance/anti-theft

<b>Rim material</b>	• Aluminum alloy
<b>Electric trunk</b>	•

## Appearance/anti-theft (continued)

<b>Electronic engine immobilizer</b>	<ul style="list-style-type: none"><li>•</li></ul>
<b>Central locking system in the car</b>	<ul style="list-style-type: none"><li>•</li></ul>
<b>Key Type</b>	<ul style="list-style-type: none"><li>• Remote key</li></ul>
<b>Keyless start system</b>	<ul style="list-style-type: none"><li>•</li></ul>
<b>Keyless entry function</b>	<ul style="list-style-type: none"><li>•</li></ul>
<b>Hands-free Trunk</b>	<ul style="list-style-type: none"><li>•</li></ul>
<b>Roof rack</b>	<ul style="list-style-type: none"><li>•</li></ul>

## Skylight/Glass

<b>Sunroof Type</b>	<ul style="list-style-type: none"><li>• Panoramic sunroof</li></ul>
<b>Front/rear electric windows</b>	Front •/Rear •
<b>One-touch window lifting function</b>	<ul style="list-style-type: none"><li>• Full car</li></ul>
<b>Window anti-pinch function</b>	<ul style="list-style-type: none"><li>•</li></ul>
<b>Car makeup mirror</b>	<ul style="list-style-type: none"><li>•</li></ul>
<b>Rear wiper</b>	<ul style="list-style-type: none"><li>•</li></ul>
<b>Rain sensor wiper function</b>	<ul style="list-style-type: none"><li>•</li></ul>

## Interior and exterior color

<b>Exterior Color</b>	Starlight Brown: #28160F; Valencia Orange: #FF660E; Gemstone Blue: #242224; Mediterranean Blue: #092A57; Cashmere Silver: #C6C1B4; Mineral White: #E7E7E7; Chestnut Copper Brown: #8A411B; Melbourne Red: #610303; Whirlwind Brown: #573E35; Snow Mountain White: #FAFAFA
<b>Interior Color</b>	Black/Mocha: #000000/#423534; Black: #000000; Black/Beige: #000000/#B4A599

## Steering wheel/interior mirror

<b>Steering Wheel Material</b>	<ul style="list-style-type: none"><li>• Cortex</li></ul>
<b>Steering wheel position adjustment</b>	<ul style="list-style-type: none"><li>• Manual up and down front and rear adjustment</li></ul>
<b>Multi-function steering wheel</b>	<ul style="list-style-type: none"><li>•</li></ul>
<b>Heated Steering Wheel</b>	-

## Steering wheel/interior mirror (continued)

<b>Steering wheel memory</b>	-
<b>Trip computer display screen</b>	•
<b>Full LCD instrument panel</b>	-
<b>Interior rearview mirror function</b>	• Automatic anti-glare
<b>HUD Head Up Digital Display</b>	•
<b>Steering Wheel Shift Paddles</b>	○

## Intelligent configuration

<b>Connected Car Services</b>	•
<b>OTA Updates</b>	-

## Driving Control

<b>Driving mode switch</b>	• Sport; • Economy; • Standard/Comfort
<b>Automatic parking</b>	-
<b>Steep slope descent</b>	•
<b>Hill start assist</b>	•
<b>Variable suspension function</b>	○ Suspension hardness adjustment (USD 676)
<b>Engine start-stop technology</b>	•

## Driving Hardware

<b>Front/rear parking radar</b>	Front •/Rear •
<b>Driving Assistance Camera System</b>	• Reversing image

## In-car charging

<b>Multimedia/charging port</b>	•USB;•AUX
<b>Luggage compartment 12V power socket</b>	•

---

"●" = Standard equipment

"□" = Not available

"○" = Optional equipment.

Note: These are Chinese market vehicles. Warranty coverage is not available outside of China.