

Vehicle Detail Report

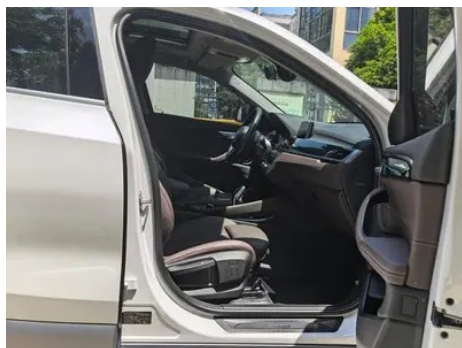
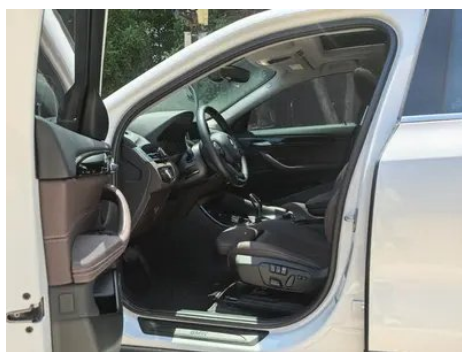
BMW X2 2020 sDrive20i M Off-road suit

Basic Information

Brand	BMW
Mileage	40,000 km
Color	White
First Registration	2020-01-01
Transfer Count	1

Vehicle Images





Vehicle Condition

1. Driver's seat rails and frame, Signs of removal. 2. Front passenger seat rails and frame, Signs of removal.

Configuration Information

Model Information

Model Name	BMW X2 2020 sDrive20i M Off-road suit
Launch Date	2019.10

Basic parameters

Vehicle Class	Compact SUV
Energy Type	Gasoline
Maximum Power (kW)	103
Maximum Torque (N·m)	220
Transmission	7-speed wet dual-clutch
Body Type	SUV
Engine	1.5T 140 horsepower L3
Dimensions (L×W×H) (mm)	4379*1824*1555
Official 0-100 km/h Acceleration (s)	9.6
Top Speed (km/h)	205
Curb Weight (kg)	1523
Maximum Gross Weight (kg)	-
NEDC Combined Fuel Consumption (L/100km)	5.8

engine

Engine Model	B38A15C
Displacement (mL)	1499
Displacement (L)	1.5
Induction Type	Turbocharging
Cylinder Arrangement	L
Number of Cylinders	3
Valves per Cylinder	4
Valve Train	DOHC
Maximum Power (PS)	140
Max Power Speed (rpm)	4600-6500
Max Torque Speed (rpm)	1480-4200
Maximum net power (kW)	-
Fuel Grade	95.
Fuel Delivery System	Direct injection
Cylinder Head Material	Aluminum alloy
Cylinder Block Material	Aluminum alloy

Screen/System

Central control color screen	<ul style="list-style-type: none">• Touch LCD screen
Infotainment Screen Size	<ul style="list-style-type: none">• 8.8 inches; ○ 10.25 inches
Bluetooth/In-car Phone	<ul style="list-style-type: none">•
Smartphone Integration/Mirroring	○ Apple CarPlay support (USD 132)
Voice recognition control system	○ Multimedia system; ○ Navigation; • Telephone

Body

Length (mm)	4379
Width (mm)	1824
Height (mm)	1555
Wheelbase (mm)	2670
Front Track (mm)	1565
Rear Track (mm)	1564
Door Opening Type	swing door
Number of Doors	5
Number of Seats	5

Body (continued)

Fuel Tank Capacity (L)	61
Trunk volume (L)	-
Drag Coefficient (Cd)	-
Approach Angle (°)	16
Departure Angle (°)	24

Gearbox

Abbreviation	7-speed wet dual-clutch
Number of Gears	7
Transmission Type	Wet Dual-Clutch Transmission (DCT)

Chassis steering

Drive Type	Front-engine, Front-wheel drive (FF)
Front Suspension Type	MacPherson independent suspension
Rear Suspension Type	Multi-link independent suspension
Power Steering Type	Electric power assistance
Vehicle structure	bearing type

Seat Configuration

Seat Material	<ul style="list-style-type: none">• Imitation leather
Main seat adjustment	<ul style="list-style-type: none">• Front and rear adjustment;• Backrest adjustment;• Height adjustment (4-way);• Leg support adjustment
Co-seat adjustment method	<ul style="list-style-type: none">• Front and rear adjustment;• Backrest adjustment;• Height adjustment (4-way);• Leg support adjustment
Electric adjustment of driver's seat and passenger seat	Main <input checked="" type="checkbox"/> /Auxiliary <input type="checkbox"/> Driver's seat electric adjustment (USD 515)
Front seat functions	<input type="checkbox"/> Heating (USD 441)
Electric seat memory function	<ul style="list-style-type: none">• Driving position
Front passenger seat rear adjustable buttons	-
Second row seat adjustment	<ul style="list-style-type: none">• Backrest adjustment
Rear seat folding	<ul style="list-style-type: none">• Proportional down
Front/rear center armrest	Front <input checked="" type="checkbox"/> /Rear <input checked="" type="checkbox"/>
Rear cup holder	<ul style="list-style-type: none">•

Seat Configuration (continued)

Sports style seats	•
---------------------------	---

Active safety

Anti-lock Braking System (ABS)	•
Electronic Brakeforce Distribution (EBD/CBC)	•
Brake Assist System (EBA/BAS/BA)	•
Traction Control System (ASR/TCS/TRC)	•
Electronic Stability Control (ESC/ESP/DSC)	•
Tire Pressure Monitoring System (TPMS)	• Tire pressure display
Seat Belt Reminder	• Full vehicle
ISOFIX Child Seat Anchors	•
Lane Departure Warning System (LDWS)	-
Autonomous Emergency Braking (AEB)	-
Driver Fatigue Detection	-
Emergency Call System (eCall)	•

Air conditioning/refrigerator

Air conditioning temperature control method	• Automatic air conditioning
Rear Independent Climate Control	-
Rear seat air vents	•
Temperature zone control	•
Car air purifier	-
In-cabin PM2.5 Filter	-

Passive safety

Driver/passenger airbag	Main •/Deputy •
Front/rear side airbags	Front •/Rear-
Front/rear head airbags (curtain airbags)	Front •/Rear •
Run-flat tires	•

Wheel brake

Wheel brake (continued)

Front Brake Type	Ventilation disc
Rear Brake Type	Ventilation disc
Parking brake type	Electronic Parking
Front Tire Size	225/50 R18
Rear Tire Size	225/50 R18
Spare Tire Size	None

Audio/Interior Lighting

Number of speakers	• 7 speakers
Interior ambient lighting	• 6 colors

Driving functions

Navigation traffic information display	-
Lane assist	-
Lane Keeping Assist System	-
Cruise control system	<input type="radio"/> Cruise Control (USD 368)
Satellite navigation system	<input type="radio"/>
Parking Assist	<input type="radio"/>

Exterior lighting

Low beam light source	•LED
High beam light source	•LED
LED daytime running lights	•
Adaptive high and low beam	-
Automatic headlights	•
Height-adjustable headlights	•
Headlight Delay Off	•

Exterior mirrors

Exterior mirror function	• Electric adjustment
---------------------------------	-----------------------

Appearance/anti-theft

Rim material	• Aluminum alloy
Electric trunk	<input type="radio"/> (USD 662)
Electronic engine immobilizer	•

Appearance/anti-theft (continued)

Central locking system in the car	<ul style="list-style-type: none">•
Key Type	<ul style="list-style-type: none">• Remote key
Keyless start system	<ul style="list-style-type: none">•
Keyless entry function	<ul style="list-style-type: none">○ Front row (USD 515)
Hands-free Trunk	<ul style="list-style-type: none">○
Electric trunk position memory	<ul style="list-style-type: none">○

Skylight/Glass

Sunroof Type	<ul style="list-style-type: none">• Openable panoramic sunroof
Front/rear electric windows	Front •/Rear •
One-touch window lifting function	<ul style="list-style-type: none">• Full vehicle
Window anti-pinch function	<ul style="list-style-type: none">•
Car makeup mirror	<ul style="list-style-type: none">• Main driving position;• First officer
Rear wiper	<ul style="list-style-type: none">•
Rain sensor wiper function	<ul style="list-style-type: none">• Rainfall-sensing

Interior and exterior color

Exterior Color	whirlwind brown #573E35 obsidian gold #E8D161 Mediterranean blue #092A57 Ore White #E7E7E7 Sunset orange #DE4A29 sky blue #0078B5
Interior Color	Black/Mocha:#000000/#423534; Black/Lava Red:#000000/#AF3A21; Black:#000000

Steering wheel/interior mirror

Steering Wheel Material	<ul style="list-style-type: none">• Leather
Steering wheel position adjustment	<ul style="list-style-type: none">• Manual up and down front and rear adjustment
Multi-function steering wheel	<ul style="list-style-type: none">•
Heated Steering Wheel	-
Steering wheel memory	-
Trip computer display screen	<ul style="list-style-type: none">• Color
Full LCD instrument panel	-

Steering wheel/interior mirror (continued)

Interior rearview mirror function	• Manual anti-glare
--	---------------------

Intelligent configuration

Connected Car Services	○
OTA Updates	-

Driving Control

Driving mode switch	• Sport; • Economy; • Standard/Comfort
Automatic parking	-
Hill start assist	•
Engine start-stop technology	•

Driving Hardware

Front/rear parking radar	Front ○/Rear •
Driving Assistance Camera System	• Reversing image

In-car charging

Multimedia/charging port	•USB;•Type-C
Number of USB/Type-C ports	• 2 in the front row/2 in the back row

Optional Package

Optional Package	Automatic parking assist component (3200 yuan Contains Automatic parking assist system Front and rear parking distance alarm) BMW Navigation systems and BMW Standard Connected Driving Combination (15400 yuan Contains BMW Navigation System information online Remote Assistance Services)
-------------------------	---

"●" = Standard equipment

"-" = Not available

"○" = Optional equipment.

Note: These are Chinese market vehicles. Warranty coverage is not available outside of China.