

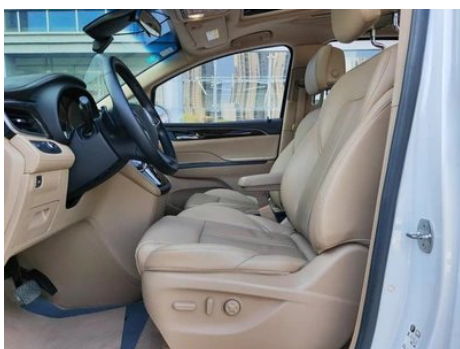
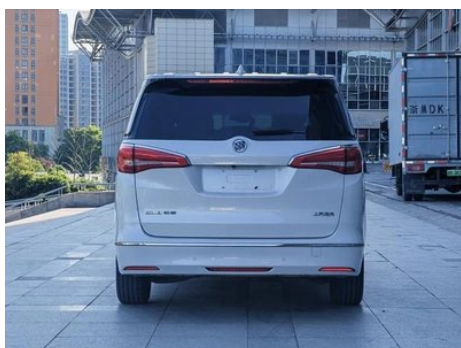
Vehicle Detail Report

Buick GL8 2018 ES 28T Luxury type Country VI

Basic Information

| | |
|--------------------|-------------------|
| Brand | Buick |
| Mileage | 252,000 km |
| Color | White |
| First Registration | 2019-06-01 |
| Transfer Count | 0 |

Vehicle Images







Vehicle Condition

1. Left rocker panel, Outer-side deformation. 2. Right rear quarter panel, Paint repair, Body panel repair.

Configuration Information

Model Information

| | |
|--------------------|---|
| Model Name | Buick GL8 2018 ES 28T Luxury Edition China VI |
| Launch Date | 2018.11 |

Basic parameters

| | |
|---|----------------------------|
| Vehicle Class | Mid- to large-size MPV |
| Energy Type | Gasoline |
| Maximum Power (kW) | 191 |
| Maximum Torque (N·m) | 350 |
| Transmission | 6-speed manual integration |
| Body Type | MPV |
| Engine | 2.0T 260 horsepower L4 |
| Dimensions (L×W×H) (mm) | 5203*1878*1805 |
| Official 0-100 km/h Acceleration (s) | 9.3 |
| Top Speed (km/h) | 205 |
| Curb Weight (kg) | 1960 |
| Maximum Gross Weight (kg) | - |
| NEDC Combined Fuel Consumption (L/100km) | 8.6 |

engine

| | |
|-----------------------------|---------------|
| Engine Model | - |
| Displacement (mL) | 1998 |
| Displacement (L) | 2.0 |
| Induction Type | Turbocharging |
| Cylinder Arrangement | L |

engine (continued)

| | |
|--------------------------------|------------------|
| Number of Cylinders | 4 |
| Valves per Cylinder | 4 |
| Valve Train | DOHC |
| Maximum Power (PS) | 260 |
| Max Power Speed (rpm) | 5400 |
| Max Torque Speed (rpm) | 2000-5000 |
| Maximum net power (kW) | - |
| Fuel Grade | 95. |
| Fuel Delivery System | Direct injection |
| Cylinder Head Material | Aluminum alloy |
| Cylinder Block Material | Aluminum alloy |

Screen/System

| | |
|---|--|
| Central control color screen | <ul style="list-style-type: none">• Touch LCD screen |
| Infotainment Screen Size | <ul style="list-style-type: none">• 8 inches |
| Bluetooth/In-car Phone | <ul style="list-style-type: none">• |
| Smartphone Integration/Mirroring | <ul style="list-style-type: none">• Support CarPlay |
| Voice recognition control system | <ul style="list-style-type: none">• Multimedia system;• Navigation;• Telephone |

Body

| | |
|-------------------------------|----------|
| Length (mm) | 5203 |
| Width (mm) | 1878 |
| Height (mm) | 1805 |
| Wheelbase (mm) | 3088 |
| Front Track (mm) | 1612 |
| Rear Track (mm) | 1626 |
| Door Opening Type | - |
| Number of Doors | 5 |
| Number of Seats | 7 |
| Fuel Tank Capacity (L) | 70 |
| Trunk volume (L) | 521-1650 |
| Drag Coefficient (Cd) | - |

Gearbox

| | |
|---------------------|----------------------------|
| Abbreviation | 6-speed manual integration |
|---------------------|----------------------------|

Gearbox (continued)

| | |
|--------------------------|--|
| Number of Gears | 6 |
| Transmission Type | Automatic Transmission with Manual Mode (AT) |

Chassis steering

| | |
|------------------------------|--------------------------------------|
| Drive Type | Front-engine, Front-wheel drive (FF) |
| Front Suspension Type | MacPherson independent suspension |
| Rear Suspension Type | Multi-link independent suspension |
| Power Steering Type | Electric power assistance |
| Vehicle structure | bearing type |

Seat Configuration

| | |
|--|---|
| Seat Material | <ul style="list-style-type: none">• Leather |
| Main seat adjustment | <ul style="list-style-type: none">• Front and rear adjustment;• Backrest adjustment;• Height adjustment (4-way);• Lumbar support (4-way) |
| Co-seat adjustment method | <ul style="list-style-type: none">• Front and rear adjustment;• Backrest adjustment;• Height adjustment (2-way) |
| Electric adjustment of driver's seat and passenger seat | Main •/Deputy • |
| Front seat functions | <ul style="list-style-type: none">• Heating |
| Front passenger seat rear adjustable buttons | - |
| Second row seat adjustment | <ul style="list-style-type: none">• Front and rear adjustment;• Backrest adjustment;• Leg rest adjustment |
| Rear seat folding | <ul style="list-style-type: none">• Proportional down |
| Front/rear center armrest | Front •/Rear • |
| Rear cup holder | <ul style="list-style-type: none">• |
| Second row seat functions | <ul style="list-style-type: none">• Heating;• Ventilation |
| Seat Layout | •2-2-3 |
| Second row independent seats | <ul style="list-style-type: none">• |
| Second row seats electrically adjustable | <ul style="list-style-type: none">• |

Active safety

| | |
|---------------------------------------|---|
| Anti-lock Braking System (ABS) | <ul style="list-style-type: none">• |
|---------------------------------------|---|

Active safety (continued)

| | |
|---|-------------------------|
| Electronic Brakeforce Distribution (EBD/CBC) | • |
| Brake Assist System (EBA/BAS/BA) | • |
| Traction Control System (ASR/TCS/TRC) | • |
| Electronic Stability Control (ESC/ESP/DSC) | • |
| Tire Pressure Monitoring System (TPMS) | • Tire pressure display |
| Seat Belt Reminder | • Front row |
| ISOFIX Child Seat Anchors | • |
| Lane Departure Warning System (LDWS) | - |
| Autonomous Emergency Braking (AEB) | - |
| Driver Fatigue Detection | - |
| Emergency Call System (eCall) | • |
| Built-in Dashcam | ○ |

Air conditioning/refrigerator

| | |
|--|------------------------------|
| Air conditioning temperature control method | • Automatic air conditioning |
| Rear Independent Climate Control | • |
| Rear seat air vents | • |
| Temperature zone control | • |
| Car air purifier | - |
| In-cabin PM2.5 Filter | • |

Passive safety

| | |
|--|-----------------|
| Driver/passenger airbag | Main •/Deputy • |
| Front/rear side airbags | Front •/Rear- |
| Front/rear head airbags (curtain airbags) | Front •/Rear • |

Wheel brake

| | |
|---------------------------|--------------------|
| Front Brake Type | Ventilation disc |
| Rear Brake Type | Disc |
| Parking brake type | Electronic Parking |

Wheel brake (continued)

| | |
|------------------------|---------------|
| Front Tire Size | 225/60 R17 |
| Rear Tire Size | 225/60 R17 |
| Spare Tire Size | Not full-size |

Audio/Interior Lighting

| | |
|----------------------------------|--------------|
| Number of speakers | • 8 speakers |
| Interior ambient lighting | • Monochrome |

Driving functions

| | |
|---|------------------|
| Navigation traffic information display | - |
| Lane assist | - |
| Lane Keeping Assist System | - |
| Cruise control system | • Cruise control |
| Satellite navigation system | • |
| Parking Assist | - |

Exterior lighting

| | |
|-------------------------------------|------|
| Low beam light source | •LED |
| High beam light source | •LED |
| LED daytime running lights | • |
| Adaptive high and low beam | - |
| Automatic headlights | • |
| Height-adjustable headlights | • |
| Headlight Delay Off | • |

Exterior mirrors

| | |
|---------------------------------|---|
| Exterior mirror function | • Electric adjustment; • Electric folding; • Mirror heating |
|---------------------------------|---|

Appearance/anti-theft

| | |
|--|------------------|
| Rim material | • Aluminum alloy |
| Electric trunk | • |
| Electronic engine immobilizer | • |
| Central locking system in the car | • |
| Key Type | • Remote key |

Appearance/anti-theft (continued)

| | |
|---------------------------------------|--|
| Keyless start system | <ul style="list-style-type: none">• |
| Keyless entry function | <ul style="list-style-type: none">• Driving position |
| Hands-free Trunk | <ul style="list-style-type: none">• |
| Electric trunk position memory | <ul style="list-style-type: none">• |
| Remote start function | <ul style="list-style-type: none">• |
| Sliding door type | <ul style="list-style-type: none">• Right side electric left side manual |

Skylight/Glass

| | |
|--|---|
| Sunroof Type | <ul style="list-style-type: none">• Sectional electric sunroof |
| Front/rear electric windows | Front •/Rear • |
| One-touch window lifting function | <ul style="list-style-type: none">• Full car |
| Window anti-pinch function | <ul style="list-style-type: none">• |
| Car makeup mirror | <ul style="list-style-type: none">• Main driver's lamp;• co-pilot's lamp |
| Rear wiper | <ul style="list-style-type: none">• |
| Rain sensor wiper function | <ul style="list-style-type: none">• Rainfall-sensing |
| Rear side privacy glass | <ul style="list-style-type: none">• |

Interior and exterior color

| | |
|-----------------------|--|
| Exterior Color | Pearl white:#FFFFFF; Champagne gold:#ECD6AD; Smoke ink ash:#79837B; Red sandalwood:#6F4F50 |
| Interior Color | Desert Rice:#C89679 |

Steering wheel/interior mirror

| | |
|---|--|
| Steering Wheel Material | <ul style="list-style-type: none">• Leather |
| Steering wheel position adjustment | <ul style="list-style-type: none">• Manual up and down front and rear adjustment |
| Multi-function steering wheel | <ul style="list-style-type: none">• |
| Heated Steering Wheel | - |
| Steering wheel memory | - |
| Trip computer display screen | <ul style="list-style-type: none">• Color |
| Full LCD instrument panel | - |
| LCD instrument size | <ul style="list-style-type: none">• 4.2 inches |

Steering wheel/interior mirror (continued)

| | |
|--|---------------------|
| Interior rearview mirror function | • Manual anti-glare |
| Steering Wheel Shift Paddles | • |

Intelligent configuration

| | |
|-------------------------------|---|
| Connected Car Services | • |
| OTA Updates | - |

Driving Control

| | |
|-------------------------------------|---|
| Automatic parking | • |
| Steep slope descent | • |
| Hill start assist | • |
| Engine start-stop technology | • |

Driving Hardware

| | |
|---|-------------------|
| Front/rear parking radar | Front-/Rear • |
| Driving Assistance Camera System | • Reversing image |

In-car charging

| | |
|-----------------------------------|--|
| Multimedia/charging port | •USB;•AUX |
| Number of USB/Type-C ports | • 1 in the front row/2 in the back row |
| 220V/230V power supply | • |

"●" = Standard equipment

"-" = Not available

"○" = Optional equipment.

Note: These are Chinese market vehicles. Warranty coverage is not available outside of China.