

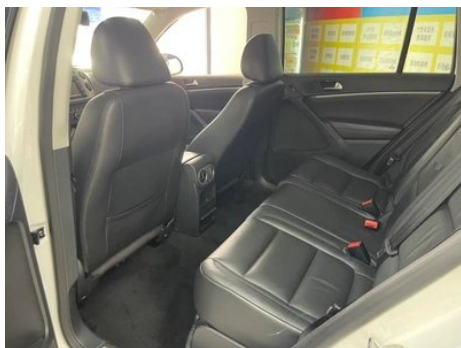
Vehicle Detail Report

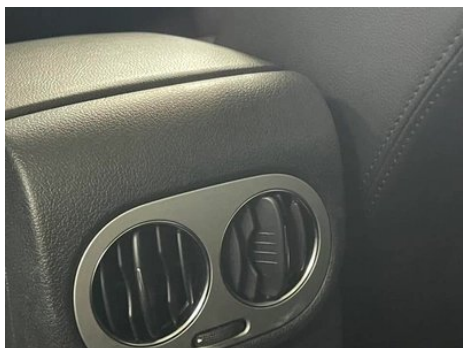
Tiguan 2015 2.0TSI Automatic four-wheel drive flagship

Basic Information

Brand	Volkswagen
Mileage	127,000 km
Color	White
First Registration	2014-11-01
Transfer Count	1

Vehicle Images





Vehicle Condition

1. Radiator support, Signs of disassembly, Replaced. 2. Interior headliner, Water marks. 3. Left rear fender, Deformation. 4. Right rear fender, Deformation. 5. Interior headliner, Water marks.

Configuration Information

Model Information

Model Name	Tiguan 2015 2.0TSI Automatic four-wheel drive flagship
Launch Date	2014.07

Basic parameters

Vehicle Class	Compact SUV
Energy Type	Gasoline
Maximum Power (kW)	147

Basic parameters (continued)

Maximum Torque (N·m)	280
Transmission	6-speed manual integration
Body Type	SUV
Engine	2.0T 200 horsepower L4
Dimensions (L×W×H) (mm)	4506*1809*1685
Official 0-100 km/h Acceleration (s)	-
Top Speed (km/h)	202
Curb Weight (kg)	1720
Maximum Gross Weight (kg)	-
NEDC Combined Fuel Consumption (L/100km)	9.2

engine

Engine Model	-
Displacement (mL)	1985
Displacement (L)	2.0
Induction Type	Turbocharging
Cylinder Arrangement	L
Number of Cylinders	4
Valves per Cylinder	4
Valve Train	DOHC
Maximum Power (PS)	200
Max Power Speed (rpm)	5100-6000
Max Torque Speed (rpm)	1700-5000
Maximum net power (kW)	-
Fuel Grade	95.
Fuel Delivery System	Direct injection
Cylinder Head Material	Aluminum alloy
Cylinder Block Material	Cast iron

Screen/System

Central control color screen	•
Bluetooth/In-car Phone	•
In-car CD/DVD Player	• Single disc CD

Body

Length (mm)	4506
Width (mm)	1809
Height (mm)	1685
Wheelbase (mm)	2684
Front Track (mm)	-
Rear Track (mm)	-
Door Opening Type	-
Number of Doors	5
Number of Seats	5
Fuel Tank Capacity (L)	63
Trunk volume (L)	400-1530
Drag Coefficient (Cd)	-

Gearbox

Abbreviation	6-speed manual integration
Number of Gears	6
Transmission Type	Automatic Transmission with Manual Mode (AT)

Chassis steering

Drive Type	Front-engine, All-wheel drive (F-AWD)
Four-wheel drive	Full-time four-wheel drive
Central differential structure	Multi-plate clutch
Front Suspension Type	MacPherson independent suspension
Rear Suspension Type	Multi-link independent suspension
Power Steering Type	Electric power assistance
Vehicle structure	bearing type

Seat Configuration

Seat Material	<ul style="list-style-type: none">• Leather
Main seat adjustment	<ul style="list-style-type: none">• Front and rear adjustment;• Backrest adjustment;• Height adjustment (4-way);• Lumbar support (4-way)
Co-seat adjustment method	<ul style="list-style-type: none">• Front and rear adjustment;• Backrest adjustment;• Height adjustment (4-way);• Lumbar support (4-way)

Seat Configuration (continued)

Electric adjustment of driver's seat and passenger seat	Main •/Deputy •
Front seat functions	• Heating
Electric seat memory function	•
Front passenger seat rear adjustable buttons	-
Second row seat adjustment	• Front and rear adjustment; • Backrest adjustment
Rear seat folding	• Proportional down
Front/rear center armrest	Front •/Rear •
Rear cup holder	•

Active safety

Anti-lock Braking System (ABS)	•
Electronic Brakeforce Distribution (EBD/CBC)	•
Brake Assist System (EBA/BAS/BA)	•
Traction Control System (ASR/TCS/TRC)	•
Electronic Stability Control (ESC/ESP/DSC)	•
Tire Pressure Monitoring System (TPMS)	•
Seat Belt Reminder	•
ISOFIX Child Seat Anchors	•
Lane Departure Warning System (LDWS)	-
Autonomous Emergency Braking (AEB)	-
Driver Fatigue Detection	-

Air conditioning/refrigerator

Air conditioning temperature control method	• Automatic air conditioning
Rear Independent Climate Control	-
Rear seat air vents	•

Air conditioning/refrigerator (continued)

Temperature zone control	•
Car air purifier	-
In-cabin PM2.5 Filter	-

Passive safety

Driver/passenger airbag	Main •/Deputy •
Front/rear side airbags	Front •/Rear-
Front/rear head airbags (curtain airbags)	Front •/Rear •

Wheel brake

Front Brake Type	Ventilation disc
Rear Brake Type	Disc
Parking brake type	Electronic Parking
Front Tire Size	235/50 R18
Rear Tire Size	235/50 R18
Spare Tire Size	Not full-size

Audio/Interior Lighting

Speaker Brand Name	•Dynaudio
Number of speakers	• 8-9 speakers
Interior ambient lighting	•

Driving functions

Navigation traffic information display	-
Lane assist	-
Lane Keeping Assist System	-
Cruise control system	• Cruise control
Satellite navigation system	•
Parking Assist	•

Exterior lighting

Low beam light source	• Xenon
High beam light source	• Xenon
LED daytime running lights	•
Adaptive high and low beam	•
Automatic headlights	•

Exterior lighting (continued)

Front fog lights	•
Height-adjustable headlights	•
Headlight Delay Off	-
Turn headlights	•
Headlight cleaning device	•

Exterior mirrors

Exterior mirror function	• Electric adjustment; • Electric folding; • Mirror memory function; • Heated mirrors
---------------------------------	---

Appearance/anti-theft

Rim material	• Aluminum alloy
Electric trunk	-
Electronic engine immobilizer	•
Central locking system in the car	•
Key Type	• Remote key
Keyless start system	•
Keyless entry function	•
Roof rack	•

Skylight/Glass

Sunroof Type	• Panoramic sunroof
Front/rear electric windows	Front •/Rear •
One-touch window lifting function	• Full car
Window anti-pinch function	•
Car makeup mirror	•
Rear wiper	•
Rain sensor wiper function	•
Rear side privacy glass	•

Interior and exterior color

Interior and exterior color (continued)

Exterior Color	Aurora, White:#FFFFFF, Junling Brown: #644336, Xuanwu, Black:#000000, Danxia red:#900E19; Reflective silver:#98AAAF; Gulf blue:#0094BC; Rock ash:#616672; Sky desert gold:#AA953D
Interior Color	Black:#000000, Black, Brown, #1D1D1D/#723D1B, Black, Beige, #1D1E20/#AAABA6, Black, Red, #000000/#923A3A

Steering wheel/interior mirror

Steering Wheel Material	<ul style="list-style-type: none">• Cortex
Steering wheel position adjustment	<ul style="list-style-type: none">• Manual up and down front and rear adjustment
Multi-function steering wheel	<ul style="list-style-type: none">•
Heated Steering Wheel	-
Steering wheel memory	-
Trip computer display screen	<ul style="list-style-type: none">•
Full LCD instrument panel	-
Interior rearview mirror function	<ul style="list-style-type: none">• Automatic anti-glare
Steering Wheel Shift Paddles	<ul style="list-style-type: none">•

Intelligent configuration

Connected Car Services	-
OTA Updates	-

Driving Control

Automatic parking	<ul style="list-style-type: none">•
Hill start assist	<ul style="list-style-type: none">•

Driving Hardware

Front/rear parking radar	Front •/Rear •
Driving Assistance Camera System	<ul style="list-style-type: none">• Reversing image

In-car charging

Multimedia/charging port	<ul style="list-style-type: none">•USB;•AUX;•SD
220V/230V power supply	<ul style="list-style-type: none">•

"●" = Standard equipment

"□" = Not available

"○" = Optional equipment.

Note: These are Chinese market vehicles. Warranty coverage is not available outside of China.