

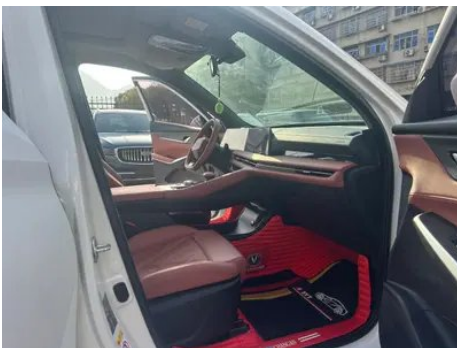
# Vehicle Detail Report

Changan CS75 PLUS 2023 Third generation  
1.5T Automatic Deluxe

## Basic Information

|                    |            |
|--------------------|------------|
| Brand              | Changan    |
| Mileage            | 20,000 km  |
| Color              | White      |
| First Registration | 2024-03-01 |
| Transfer Count     | 0          |

## Vehicle Images







## Vehicle Condition

1. Right rear quarter panel, Deformation.

## Configuration Information

### Model Information

|                    |   |
|--------------------|---|
| <b>Model Name</b>  | Changan CS75 Plus 2023 Third generation 1.5T Automatic Deluxe |
| <b>Launch Date</b> | 2023.04   |

### Basic parameters

|   |                           |
|---|---------------------------|
| <b>Vehicle Class</b>                            | Compact SUV               |
| <b>Energy Type</b>                              | Gasoline                  |
| <b>Maximum Power (kW)</b>                       | 138                       |
| <b>Maximum Torque (N·m)</b>                     | 300                       |
| <b>Transmission</b>                             | 8-gear manual integration |
| <b>Body Type</b>                                | SUV                       |
| <b>Engine</b>                                   | 1.5T 188 horsepower L4    |
| <b>Dimensions (L×W×H) (mm)</b>                  | 4710*1865*1710            |
| <b>Official 0-100 km/h Acceleration (s)</b>     | -                         |
| <b>Top Speed (km/h)</b>                         | 190                       |
| <b>Curb Weight (kg)</b>                         | 1575                      |
| <b>Maximum Gross Weight (kg)</b>                | 1950                      |
| <b>WLTP Combined Fuel Consumption (L/100km)</b> | 6.96                      |

### engine

|                             |               |
|-----------------------------|---------------|
| <b>Engine Model</b>         | JL473ZQ7      |
| <b>Displacement (mL)</b>    | 1494          |
| <b>Displacement (L)</b>     | 1.5           |
| <b>Induction Type</b>       | Turbocharging |
| <b>Cylinder Arrangement</b> | L             |

## engine (continued)

|                                |                  |
|--------------------------------|------------------|
| <b>Number of Cylinders</b>     | 4                |
| <b>Valves per Cylinder</b>     | 4                |
| <b>Valve Train</b>             | DOHC             |
| <b>Maximum Power (PS)</b>      | 188              |
| <b>Max Power Speed (rpm)</b>   | 5500             |
| <b>Max Torque Speed (rpm)</b>  | 1500-4000        |
| <b>Maximum net power (kW)</b>  | 133              |
| <b>Fuel Grade</b>              | 92.              |
| <b>Fuel Delivery System</b>    | Direct injection |
| <b>Cylinder Head Material</b>  | Aluminum alloy   |
| <b>Cylinder Block Material</b> | Aluminum alloy   |
| <b>Engine layout</b>           | Horizontal       |

## Screen/System

|  |   |
|--|---|
| <b>Central control color screen</b>      | <ul style="list-style-type: none"><li>• Touch LCD screen</li></ul>  |
| <b>Infotainment Screen Size</b>          | <ul style="list-style-type: none"><li>• 12.3 inches</li></ul>   |
| <b>Bluetooth/In-car Phone</b>            | <ul style="list-style-type: none"><li>•</li></ul>   |
| <b>Smartphone Integration/ Mirroring</b> | <ul style="list-style-type: none"><li>• Original interconnection/mapping</li></ul>  |
| <b>Voice recognition control system</b>  | <ul style="list-style-type: none"><li>• Multimedia system;</li><li>• Navigation;</li><li>• Telephone;</li><li>• Air conditioning;</li><li>• Sunroof</li></ul> |
| <b>Facial Recognition</b>                | <input type="radio"/>   |
| <b>Gesture Control</b>                   | <input type="radio"/>   |

## Body

|   |            |
|---|------------|
| <b>Length (mm)</b>                          | 4710       |
| <b>Width (mm)</b>                           | 1865       |
| <b>Height (mm)</b>                          | 1710       |
| <b>Wheelbase (mm)</b>                       | 2710       |
| <b>Front Track (mm)</b>                     | 1585       |
| <b>Rear Track (mm)</b>                      | 1585       |
| <b>Ground Clearance (Fully Loaded) (mm)</b> | 170        |
| <b>Door Opening Type</b>                    | swing door |
| <b>Number of Doors</b>                      | 5          |
| <b>Number of Seats</b>                      | 5          |

## Body (continued)

|   |          |
|---|----------|
| <b>Fuel Tank Capacity (L)</b>                     | 58       |
| <b>Trunk volume (L)</b>                           | 620-1450 |
| <b>Drag Coefficient (Cd)</b>                      | -        |
| <b>Approach Angle (°)</b>                         | 20       |
| <b>Departure Angle (°)</b>                        | 24       |
| <b>Minimum ground clearance without load (mm)</b> | 190      |
| <b>Longitudinal passing angle (°)</b>             | 18       |

## Gearbox

|                          |  |
|--------------------------|--|
| <b>Abbreviation</b>      | 8-gear manual integration                    |
| <b>Number of Gears</b>   | 8  |
| <b>Transmission Type</b> | Automatic Transmission with Manual Mode (AT) |

## Chassis steering

|                              |                                      |
|------------------------------|--------------------------------------|
| <b>Drive Type</b>            | Front-engine, Front-wheel drive (FF) |
| <b>Front Suspension Type</b> | MacPherson independent suspension    |
| <b>Rear Suspension Type</b>  | Multi-link independent suspension    |
| <b>Power Steering Type</b>   | Electric power assistance            |
| <b>Vehicle structure</b>     | bearing type                         |

## Seat Configuration

|  |   |
|--|---|
| <b>Seat Material</b>   | • Imitation leather   |
| <b>Main seat adjustment</b>                                    | • Front and rear adjustment; • Backrest adjustment; • Height adjustment (2-way) |
| <b>Co-seat adjustment method</b>                               | • Front and rear adjustment; • Backrest adjustment                              |
| <b>Electric adjustment of driver's seat and passenger seat</b> | Main •/Deputy •   |
| <b>Front seat functions</b>                                    | • Heating   |
| <b>Electric seat memory function</b>                           | ○ Driving position  |
| <b>Front passenger seat rear adjustable buttons</b>            | -   |
| <b>Second row seat adjustment</b>                              | • Backrest adjustment   |

## Seat Configuration (continued)

|                                  |                     |
|----------------------------------|---------------------|
| <b>Rear seat folding</b>         | • Proportional down |
| <b>Front/rear center armrest</b> | Front •/Rear •      |
| <b>Rear cup holder</b>           | •                   |
| <b>Sports style seats</b>        | •                   |

## Active safety

|   |                         |
|---|-------------------------|
| <b>Anti-lock Braking System (ABS)</b>               | •                       |
| <b>Electronic Brakeforce Distribution (EBD/CBC)</b> | •                       |
| <b>Brake Assist System (EBA/BAS/BA)</b>             | •                       |
| <b>Traction Control System (ASR/TCS/TRC)</b>        | •                       |
| <b>Electronic Stability Control (ESC/ESP/DSC)</b>   | •                       |
| <b>Tire Pressure Monitoring System (TPMS)</b>       | • Tire pressure display |
| <b>Seat Belt Reminder</b>                           | • Full car              |
| <b>ISOFIX Child Seat Anchors</b>                    | •                       |
| <b>Lane Departure Warning System (LDWS)</b>         | -                       |
| <b>Autonomous Emergency Braking (AEB)</b>           | •                       |
| <b>Driver Fatigue Detection</b>                     | -                       |
| <b>Forward Collision Warning (FCW)</b>              | •                       |
| <b>Built-in Dashcam</b>                             | •                       |

## Air conditioning/refrigerator

|  |                              |
|--|------------------------------|
| <b>Air conditioning temperature control method</b> | • Automatic air conditioning |
| <b>Rear Independent Climate Control</b>            | -                            |
| <b>Rear seat air vents</b>                         | •                            |
| <b>Temperature zone control</b>                    | -                            |
| <b>Car air purifier</b>                            | •                            |
| <b>In-cabin PM2.5 Filter</b>                       | •                            |
| <b>Negative ion generator</b>                      | •                            |

## Passive safety

## Passive safety (continued)

|  |                 |
|--|-----------------|
| <b>Driver/passenger airbag</b>                   | Main •/Deputy • |
| <b>Front/rear side airbags</b>                   | Front •/Rear-   |
| <b>Front/rear head airbags (curtain airbags)</b> | Front •/Rear •  |

## Wheel brake

|                           |                    |
|---------------------------|--------------------|
| <b>Front Brake Type</b>   | Ventilation disc   |
| <b>Rear Brake Type</b>    | Disc               |
| <b>Parking brake type</b> | Electronic Parking |
| <b>Front Tire Size</b>    | 225/55 R19         |
| <b>Rear Tire Size</b>     | 225/55 R19         |
| <b>Spare Tire Size</b>    | Not full-size      |

## Audio/Interior Lighting

|                           |              |
|---------------------------|--------------|
| <b>Speaker Brand Name</b> | ○ SONY SONY  |
| <b>Number of speakers</b> | • 6 speakers |

## Driving functions

|   |                              |
|---|------------------------------|
| <b>Navigation traffic information display</b> | •                            |
| <b>Lane assist</b>                            | -                            |
| <b>Lane Keeping Assist System</b>             | -                            |
| <b>Cruise control system</b>                  | • Full speed adaptive cruise |
| <b>Satellite navigation system</b>            | •                            |
| <b>Map Brand</b>                              | • Amap; • Tencent            |
| <b>Parking Assist</b>                         | -                            |

## Exterior lighting

|                                     |      |
|-------------------------------------|------|
| <b>Low beam light source</b>        | •LED |
| <b>High beam light source</b>       | •LED |
| <b>LED daytime running lights</b>   | •    |
| <b>Adaptive high and low beam</b>   | -    |
| <b>Automatic headlights</b>         | •    |
| <b>Height-adjustable headlights</b> | •    |
| <b>Headlight Delay Off</b>          | •    |

## Exterior mirrors

## Exterior mirrors (continued)

|                                 |  |
|---------------------------------|--|
| <b>Exterior mirror function</b> | <ul style="list-style-type: none"><li>• Electric adjustment; • Electric folding; ○ Mirror memory; • Rearview mirror heating; ○ Automatically turn down when reversing; • Automatically fold when locking the car</li></ul> |
|---------------------------------|--|

## Appearance/anti-theft

|  |   |
|--|---|
| <b>Rim material</b>                      | <ul style="list-style-type: none"><li>• Aluminum alloy</li></ul>              |
| <b>Electric trunk</b>                    | <ul style="list-style-type: none"><li>•</li></ul>                             |
| <b>Electronic engine immobilizer</b>     | <ul style="list-style-type: none"><li>•</li></ul>                             |
| <b>Central locking system in the car</b> | <ul style="list-style-type: none"><li>•</li></ul>                             |
| <b>Key Type</b>                          | <ul style="list-style-type: none"><li>• Remote key; • Bluetooth key</li></ul> |
| <b>Keyless start system</b>              | <ul style="list-style-type: none"><li>•</li></ul>                             |
| <b>Keyless entry function</b>            | <ul style="list-style-type: none"><li>• Driving position</li></ul>            |
| <b>Electric trunk position memory</b>    | <ul style="list-style-type: none"><li>•</li></ul>                             |
| <b>Roof rack</b>                         | <ul style="list-style-type: none"><li>•</li></ul>                             |
| <b>Remote start function</b>             | <ul style="list-style-type: none"><li>•</li></ul>                             |
| <b>Active closed grille</b>              | <ul style="list-style-type: none"><li>•</li></ul>                             |

## Skylight/Glass

|  |   |
|--|---|
| <b>Sunroof Type</b>                      | <ul style="list-style-type: none"><li>• Openable panoramic sunroof</li></ul>            |
| <b>Front/rear electric windows</b>       | Front • /Rear •   |
| <b>One-touch window lifting function</b> | <ul style="list-style-type: none"><li>• Full car</li></ul>                              |
| <b>Window anti-pinch function</b>        | <ul style="list-style-type: none"><li>•</li></ul>                                       |
| <b>Car makeup mirror</b>                 | <ul style="list-style-type: none"><li>• Main driver's lamp; • co-pilot's lamp</li></ul> |
| <b>Rear wiper</b>                        | <ul style="list-style-type: none"><li>•</li></ul>                                       |

## Interior and exterior color

|                       |   |
|-----------------------|---|
| <b>Exterior Color</b> | Andean gray:#585B62; Blue sky blue:#ADC7DE; Interstellar blue:#2E4FA0; Glare white:#FFFFFF; Atomic ash:#ABACB0; Noble black:#000000 |
|-----------------------|---|

## Interior and exterior color (continued)

|                       |   |
|-----------------------|---|
| <b>Interior Color</b> | Black, quicksand white:#000000/#E6E6E6, Black, Mysterious Red:#000000/#D47979, Ice Crystal Blue/White:#2D4762/#E2E4E3 |
|-----------------------|---|

## Steering wheel/interior mirror

|   |  |
|---|--|
| <b>Steering Wheel Material</b>            | • Cortex                                       |
| <b>Steering wheel position adjustment</b> | • Manual up and down front and rear adjustment |
| <b>Multi-function steering wheel</b>      | •  |
| <b>Heated Steering Wheel</b>              | -  |
| <b>Steering wheel memory</b>              | -  |
| <b>Trip computer display screen</b>       | • Color  |
| <b>Full LCD instrument panel</b>          | •  |
| <b>LCD instrument size</b>                | • 12.3 inches                                  |
| <b>Interior rearview mirror function</b>  | • Manual anti-glare                            |
| <b>Gear shifting</b>                      | • Electronic gear shift                        |

## Intelligent configuration

|                                   |  |
|-----------------------------------|--|
| <b>Connected Car Services</b>     | •  |
| <b>OTA Updates</b>                | •  |
| <b>4G/5G Network</b>              | •4G  |
| <b>Mobile APP remote function</b> | • Door control; • Air conditioning control; • Vehicle condition inquiry/diagnosis; • Vehicle location/vehicle search |
| <b>Wi-Fi hotspots</b>             | •  |

## Driving Control

|                                     |   |
|-------------------------------------|---|
| <b>Driving mode switch</b>          | • Sport; • Economy; • Standard/Comfort; • Customization/Personalization |
| <b>Automatic parking</b>            | •   |
| <b>Steep slope descent</b>          | •   |
| <b>Hill start assist</b>            | •   |
| <b>Engine start-stop technology</b> | •   |

## Driving Hardware

|                                 |               |
|---------------------------------|---------------|
| <b>Front/rear parking radar</b> | Front-/Rear • |
|---------------------------------|---------------|

## Driving Hardware (continued)

|   |                              |
|---|------------------------------|
| <b>Driving Assistance Camera System</b>       | • 360-degree panoramic image |
| <b>Number of cameras</b>                      | • 4                          |
| <b>Number of ultrasonic radars</b>            | • 4                          |
| <b>Transparent chassis/540-degree imaging</b> | •                            |
| <b>Millimeter wave radar quantity</b>         | • 1                          |

## In-car charging

|  |  |
|--|--|
| <b>Multimedia/charging port</b>                | •USB;•SD                               |
| <b>Number of USB/Type-C ports</b>              | • 1 in the front row/2 in the back row |
| <b>Mobile phone wireless charging function</b> | • Front row                            |

---

"●" = Standard equipment

"\_" = Not available

"○" = Optional equipment.

Note: These are Chinese market vehicles. Warranty coverage is not available outside of China.