

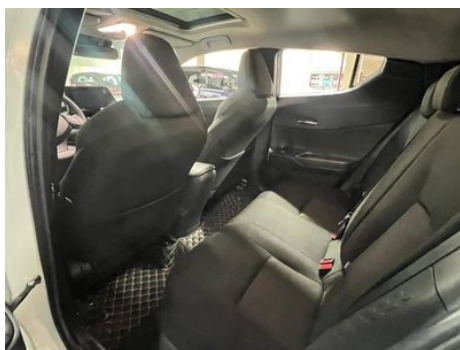
Vehicle Detail Report

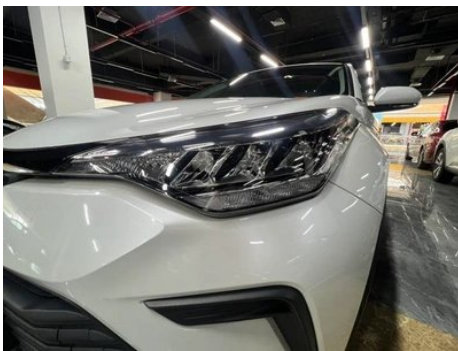
Toyota Yize IZOA 2022 2.0L Exercise SPORT version

Basic Information

| | |
|--------------------|------------|
| Brand | Toyota |
| Mileage | 49,000 km |
| Color | White |
| First Registration | 2022-08-01 |
| Transfer Count | 0 |

Vehicle Images





Vehicle Condition

1. Inner side of left A-pillar, Deformation.

Configuration Information

Model Information

| | |
|--------------------|--|
| Model Name | Toyota Yize IZOA 2022 2.0L SPORT version |
| Launch Date | 2022.08 |

Basic parameters

| | |
|-----------------------------|-----------|
| Vehicle Class | Small SUV |
| Energy Type | Gasoline |
| Maximum Power (kW) | 126 |
| Maximum Torque (N·m) | 203 |

Basic parameters (continued)

| | |
|---|---|
| Transmission | CVT continuously variable (simulating 10 gears) |
| Body Type | SUV |
| Engine | 2.0L 171 horsepower L4 |
| Dimensions (L×W×H) (mm) | 4390*1795*1565 |
| Official 0-100 km/h Acceleration (s) | 10.3 |
| Top Speed (km/h) | 185 |
| Curb Weight (kg) | 1515 |
| Maximum Gross Weight (kg) | 1960 |
| NEDC Combined Fuel Consumption (L/100km) | 5.7 |

engine

| | |
|-------------------------------------|--------------------|
| Engine Model | M20E |
| Displacement (mL) | 1987 |
| Displacement (L) | 2.0 |
| Induction Type | Natural aspiration |
| Cylinder Arrangement | L |
| Number of Cylinders | 4 |
| Valves per Cylinder | 4 |
| Valve Train | DOHC |
| Bore (mm) | 80.5 |
| Stroke (mm) | 97.6 |
| Maximum Power (PS) | 171 |
| Max Power Speed (rpm) | 6600 |
| Max Torque Speed (rpm) | 4400-4800 |
| Maximum net power (kW) | 126 |
| Fuel Grade | 92. |
| Fuel Delivery System | Mixed injection |
| Cylinder Head Material | Aluminum alloy |
| Cylinder Block Material | Aluminum alloy |
| Engine layout | Horizontal |
| Engine-specific technologies | VVT-iE |

Screen/System

| | |
|---|---|
| Central control color screen | <ul style="list-style-type: none">• Touch LCD screen |
| Infotainment Screen Size | <ul style="list-style-type: none">•9 inches |
| Bluetooth/In-car Phone | <ul style="list-style-type: none">• |
| Voice recognition control system | <ul style="list-style-type: none">• Multimedia system;• Navigation;• Phone;• Sunroof |

Body

| | |
|---|------------|
| Length (mm) | 4390 |
| Width (mm) | 1795 |
| Height (mm) | 1565 |
| Wheelbase (mm) | 2640 |
| Front Track (mm) | 1550 |
| Rear Track (mm) | 1550 |
| Door Opening Type | swing door |
| Number of Doors | 5 |
| Number of Seats | 5 |
| Fuel Tank Capacity (L) | 50 |
| Trunk volume (L) | 289 |
| Drag Coefficient (Cd) | - |
| Approach Angle (°) | 14 |
| Departure Angle (°) | 20 |
| Minimum Turning Radius (m) | 5.2 |
| Minimum ground clearance without load (mm) | 149 |

Gearbox

| | |
|--------------------------|---|
| Abbreviation | CVT continuously variable (simulating 10 gears) |
| Number of Gears | 10 |
| Transmission Type | Continuously Variable Transmission (CVT) |

Chassis steering

| | |
|------------------------------|--|
| Drive Type | Front-engine, Front-wheel drive (FF) |
| Front Suspension Type | MacPherson independent suspension |
| Rear Suspension Type | E-type multi-link independent suspension |

Chassis steering (continued)

| | |
|----------------------------|---------------------------|
| Power Steering Type | Electric power assistance |
| Vehicle structure | bearing type |

Seat Configuration

| | |
|--|---|
| Seat Material | • Genuine leather; • Faux leather |
| Main seat adjustment | • Front and rear adjustment; • Backrest adjustment; • Height adjustment (4-way); • Lumbar support (2-way) |
| Co-seat adjustment method | • Front and rear adjustment; • Backrest adjustment |
| Electric adjustment of driver's seat and passenger seat | Main/Deputy- |
| Front passenger seat rear adjustable buttons | - |
| Rear seat folding | • Proportional down |
| Front/rear center armrest | Front •/Rear- |
| Rear cup holder | - |

Active safety

| | |
|---|-----------------------|
| Anti-lock Braking System (ABS) | • |
| Electronic Brakeforce Distribution (EBD/CBC) | • |
| Brake Assist System (EBA/BAS/BA) | • |
| Traction Control System (ASR/TCS/TRC) | • |
| Electronic Stability Control (ESC/ESP/DSC) | • |
| Tire Pressure Monitoring System (TPMS) | • Tire pressure alarm |
| Seat Belt Reminder | • Full vehicle |
| ISOFIX Child Seat Anchors | • |
| Lane Departure Warning System (LDWS) | • |
| Autonomous Emergency Braking (AEB) | • |
| Driver Fatigue Detection | - |
| Forward Collision Warning (FCW) | • |

Active safety (continued)

| | |
|--------------------------------------|---|
| Emergency Call System (eCall) | • |
|--------------------------------------|---|

Air conditioning/refrigerator

| | |
|--|---------------------------|
| Air conditioning temperature control method | • Manual air conditioning |
| Rear Independent Climate Control | - |
| Rear seat air vents | - |
| Temperature zone control | - |
| Car air purifier | - |
| In-cabin PM2.5 Filter | • |

Passive safety

| | |
|--|------------------------|
| Driver/passenger airbag | Main •/Deputy • |
| Front/rear side airbags | Front •/Rear • |
| Front/rear head airbags (curtain airbags) | Front •/Rear • |
| Knee airbag | • Driver's knee airbag |
| Passenger seat cushion airbag | • |

Wheel brake

| | |
|---------------------------|--------------------|
| Front Brake Type | Ventilation disc |
| Rear Brake Type | Disc |
| Parking brake type | Electronic Parking |
| Front Tire Size | 215/60 R17 |
| Rear Tire Size | 215/60 R17 |
| Spare Tire Size | Not full-size |

Audio/Interior Lighting

| | |
|---------------------------|--------------|
| Number of speakers | • 6 speakers |
|---------------------------|--------------|

Driving functions

| | |
|---|------------------------------|
| Navigation traffic information display | • |
| Lane assist | - |
| Lane Keeping Assist System | • |
| Cruise control system | • Full speed adaptive cruise |
| Satellite navigation system | • |

Driving functions (continued)

| | |
|----------------------------------|----------------------|
| Driving assistance level | •L2 |
| Lane centering | • |
| Driver assistance systems | •Toyota Safety Sense |
| Parking Assist | - |

Exterior lighting

| | |
|-------------------------------------|------|
| Low beam light source | •LED |
| High beam light source | •LED |
| LED daytime running lights | • |
| Adaptive high and low beam | • |
| Automatic headlights | • |
| Front fog lights | •LED |
| Height-adjustable headlights | • |
| Headlight Delay Off | - |

Exterior mirrors

| | |
|---------------------------------|-----------------------|
| Exterior mirror function | • Electric adjustment |
|---------------------------------|-----------------------|

Appearance/anti-theft

| | |
|--|------------------|
| Rim material | • Aluminum alloy |
| Electric trunk | - |
| Electronic engine immobilizer | • |
| Central locking system in the car | • |
| Key Type | • Remote key |
| Keyless start system | • |
| Keyless entry function | • Front row |
| Appearance Kit | • Sports style |

Skylight/Glass

| | |
|--|--------------------|
| Sunroof Type | • Electric sunroof |
| Front/rear electric windows | Front •/Rear • |
| One-touch window lifting function | • Full vehicle |
| Window anti-pinch function | • |

Skylight/Glass (continued)

| | |
|--------------------------|--|
| Car makeup mirror | <ul style="list-style-type: none">• Main driving position;• First officer |
| Rear wiper | <ul style="list-style-type: none">• |

Interior and exterior color

| | |
|-----------------------|-----------------------------|
| Exterior Color | Moyuan Black #1D1510 |
| Interior Color | Black/White:#000000/#FFFFFF |

Steering wheel/interior mirror

| | |
|---|--|
| Steering Wheel Material | <ul style="list-style-type: none">• Leather |
| Steering wheel position adjustment | <ul style="list-style-type: none">• Manual up and down front and rear adjustment |
| Multi-function steering wheel | <ul style="list-style-type: none">• |
| Heated Steering Wheel | - |
| Steering wheel memory | - |
| Trip computer display screen | <ul style="list-style-type: none">• Color |
| Full LCD instrument panel | - |
| LCD instrument size | <ul style="list-style-type: none">• 4.2 inches |
| Interior rearview mirror function | <ul style="list-style-type: none">• Manual anti-glare |
| Gear shifting | <ul style="list-style-type: none">• Mechanical gear shift |

Intelligent configuration

| | |
|-----------------------------------|--|
| Connected Car Services | <ul style="list-style-type: none">• |
| OTA Updates | - |
| Mobile APP remote function | <ul style="list-style-type: none">• Door control;• Vehicle status check/diagnostics;• Vehicle location / find my car |

Driving Control

| | |
|-------------------------------------|--|
| Driving mode switch | <ul style="list-style-type: none">• Sport;• Economy;• Standard/Comfort |
| Automatic parking | <ul style="list-style-type: none">• |
| Hill start assist | <ul style="list-style-type: none">• |
| Engine start-stop technology | <ul style="list-style-type: none">• |

Driving Hardware

| | |
|---|---|
| Front/rear parking radar | - |
| Driving Assistance Camera System | <ul style="list-style-type: none">• Reversing image |

In-car charging

In-car charging (continued)

| | |
|-----------------------------------|----------------------|
| Multimedia/charging port | •USB;•AUX |
| Number of USB/Type-C ports | • 1 in the front row |

"●" = Standard equipment

"_" = Not available

"○" = Optional equipment.

Note: These are Chinese market vehicles. Warranty coverage is not available outside of China.