

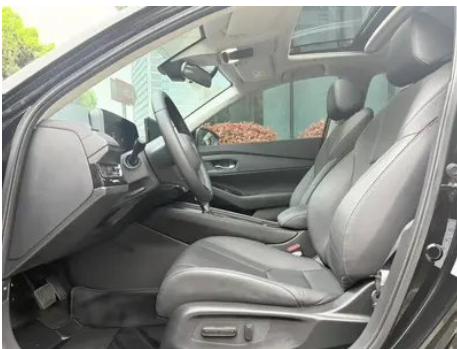
Vehicle Detail Report

Honda Inspire 2025 260TURBO Elite Edition

Basic Information

| | |
|--------------------|------------|
| Brand | Honda |
| Mileage | 43,000 km |
| Color | Black |
| First Registration | 2025-05-01 |
| Transfer Count | 0 |

Vehicle Images





Vehicle Condition

1. Original metal body panels with factory paint.

Configuration Information

Model Information

| | |
|--------------------|---|
| Model Name | Honda Inspire 2025 260TURBO Elite Edition |
| Launch Date | 2024.12 |

Basic parameters

| | |
|--------------------------------|--|
| Vehicle Class | Mid-size car |
| Energy Type | Gasoline |
| Maximum Power (kW) | 141 |
| Maximum Torque (N·m) | 260 |
| Transmission | CVT continuously variable transmission |
| Body Type | Sedan |
| Engine | 1.5T 192 horsepower L4 |
| Dimensions (L×W×H) (mm) | 4979*1862*1449 |

Basic parameters (continued)

| | |
|---|------|
| Official 0-100 km/h Acceleration (s) | - |
| Top Speed (km/h) | 186 |
| Curb Weight (kg) | 1517 |
| Maximum Gross Weight (kg) | 2030 |
| WLTP Combined Fuel Consumption (L/100km) | 6.71 |

engine

| | |
|-------------------------------------|------------------|
| Engine Model | L15CL |
| Displacement (mL) | 1498 |
| Displacement (L) | 1.5 |
| Induction Type | Turbocharging |
| Cylinder Arrangement | L |
| Number of Cylinders | 4 |
| Valves per Cylinder | 4 |
| Compression Ratio | 10.6 |
| Valve Train | DOHC |
| Maximum Power (PS) | 192 |
| Max Power Speed (rpm) | 6000 |
| Max Torque Speed (rpm) | 1700-5000 |
| Maximum net power (kW) | 141 |
| Fuel Grade | 92. |
| Fuel Delivery System | Direct injection |
| Cylinder Head Material | Aluminum alloy |
| Cylinder Block Material | Aluminum alloy |
| Engine layout | Horizontal |
| Engine-specific technologies | VTEC |

Screen/System

| | |
|---|--|
| Central control color screen | <ul style="list-style-type: none">• Touch LCD screen |
| Infotainment Screen Size | <ul style="list-style-type: none">• 12.3 inches |
| Bluetooth/In-car Phone | <ul style="list-style-type: none">• |
| Smartphone Integration/Mirroring | <ul style="list-style-type: none">• Apple CarPlay support;• Baidu CarLife support |

Screen/System (continued)

| | |
|---|--|
| Voice recognition control system | <ul style="list-style-type: none">• Multimedia system;• Navigation;• Telephone;• Air conditioning |
| In-vehicle intelligent system | <ul style="list-style-type: none">•Honda Connect 4.0 |
| Facial Recognition | <ul style="list-style-type: none">• |
| App Store | <ul style="list-style-type: none">• |
| Voice assistant wake-up word | <ul style="list-style-type: none">• Hello, Honda |

Body

| | |
|-----------------------------------|------------|
| Length (mm) | 4979 |
| Width (mm) | 1862 |
| Height (mm) | 1449 |
| Wheelbase (mm) | 2830 |
| Front Track (mm) | 1591 |
| Rear Track (mm) | 1613 |
| Door Opening Type | swing door |
| Number of Doors | 4 |
| Number of Seats | 5 |
| Fuel Tank Capacity (L) | 56 |
| Trunk volume (L) | - |
| Drag Coefficient (Cd) | - |
| Approach Angle (°) | 14 |
| Departure Angle (°) | 18 |
| Minimum Turning Radius (m) | 5.75 |

Gearbox

| | |
|--------------------------|--|
| Abbreviation | CVT continuously variable transmission |
| Number of Gears | stepless speed change |
| Transmission Type | Continuously Variable Transmission (CVT) |

Chassis steering

| | |
|------------------------------|--------------------------------------|
| Drive Type | Front-engine, Front-wheel drive (FF) |
| Front Suspension Type | MacPherson independent suspension |
| Rear Suspension Type | Multi-link independent suspension |
| Power Steering Type | Electric power assistance |

Chassis steering (continued)

| | |
|--------------------------|--------------|
| Vehicle structure | bearing type |
|--------------------------|--------------|

Seat Configuration

| | |
|--|---|
| Seat Material | <ul style="list-style-type: none">• Imitation leather |
| Main seat adjustment | <ul style="list-style-type: none">• Front and rear adjustment;• Backrest adjustment;• Height adjustment (4-way) |
| Co-seat adjustment method | <ul style="list-style-type: none">• Front and rear adjustment;• Backrest adjustment |
| Electric adjustment of driver's seat and passenger seat | Main •/Deputy • |
| Front passenger seat rear adjustable buttons | - |
| Rear seat folding | <ul style="list-style-type: none">• Overall down |
| Front/rear center armrest | Front •/Rear • |
| Rear cup holder | <ul style="list-style-type: none">• |

Active safety

| | |
|---|---|
| Anti-lock Braking System (ABS) | <ul style="list-style-type: none">• |
| Electronic Brakeforce Distribution (EBD/CBC) | <ul style="list-style-type: none">• |
| Brake Assist System (EBA/BAS/BA) | <ul style="list-style-type: none">• |
| Traction Control System (ASR/TCS/TRC) | <ul style="list-style-type: none">• |
| Electronic Stability Control (ESC/ESP/DSC) | <ul style="list-style-type: none">• |
| Tire Pressure Monitoring System (TPMS) | <ul style="list-style-type: none">• Tire pressure alarm |
| Seat Belt Reminder | <ul style="list-style-type: none">• Full vehicle |
| ISOFIX Child Seat Anchors | <ul style="list-style-type: none">• |
| Lane Departure Warning System (LDWS) | <ul style="list-style-type: none">• |
| Autonomous Emergency Braking (AEB) | <ul style="list-style-type: none">• |
| Driver Fatigue Detection | <ul style="list-style-type: none">• |
| Forward Collision Warning (FCW) | <ul style="list-style-type: none">• |
| Emergency Call System (eCall) | <ul style="list-style-type: none">• |

Air conditioning/refrigerator

Air conditioning/refrigerator (continued)

| | |
|--|--|
| Air conditioning temperature control method | <ul style="list-style-type: none">• Automatic air conditioning |
| Rear Independent Climate Control | - |
| Rear seat air vents | <ul style="list-style-type: none">• |
| Temperature zone control | <ul style="list-style-type: none">• |
| Car air purifier | - |
| In-cabin PM2.5 Filter | <ul style="list-style-type: none">• |

Passive safety

| | |
|--|---|
| Driver/passenger airbag | Main •/Deputy • |
| Front/rear side airbags | Front •/Rear • |
| Front/rear head airbags (curtain airbags) | Front •/Rear • |
| Knee airbag | <ul style="list-style-type: none">• Main driver's knee airbag; • Auxiliary driver's knee airbag |
| Passive pedestrian protection | <ul style="list-style-type: none">• |

Wheel brake

| | |
|-----------------------------|--------------------|
| Front Brake Type | Ventilation disc |
| Rear Brake Type | Disc |
| Parking brake type | Electronic Parking |
| Front Tire Size | 235/45 R18 |
| Rear Tire Size | 235/45 R18 |
| Spare Tire Size | Not full-size |
| Spare tire placement | In the trunk |

Audio/Interior Lighting

| | |
|----------------------------|--|
| Number of speakers | <ul style="list-style-type: none">• 8 speakers |
| Touch reading light | <ul style="list-style-type: none">• |

Driving functions

| | |
|---|--|
| Navigation traffic information display | <ul style="list-style-type: none">• |
| Lane assist | <ul style="list-style-type: none">• |
| Lane Keeping Assist System | <ul style="list-style-type: none">• |
| Cruise control system | <ul style="list-style-type: none">• Full speed adaptive cruise |
| Satellite navigation system | <ul style="list-style-type: none">• |

Driving functions (continued)

| | |
|--------------------------------------|----------------|
| Driving assistance level | •L2 |
| Rear Cross Traffic Alert | • |
| Lane centering | • |
| Road traffic sign recognition | • |
| Driver assistance systems | •Honda SENSING |
| Parking Assist | - |

Exterior lighting

| | |
|-------------------------------------|------|
| Low beam light source | •LED |
| High beam light source | •LED |
| LED daytime running lights | • |
| Adaptive high and low beam | • |
| Automatic headlights | • |
| Height-adjustable headlights | • |
| Headlight Delay Off | • |

Exterior mirrors

| | |
|---------------------------------|---|
| Exterior mirror function | • Electric adjustment; • Electric folding; • Mirror heating |
|---------------------------------|---|

Appearance/anti-theft

| | |
|--|------------------|
| Rim material | • Aluminum alloy |
| Electronic engine immobilizer | • |
| Central locking system in the car | • |
| Key Type | • Remote key |
| Keyless start system | • |
| Keyless entry function | • Front row |
| Active closed grille | • |

Skylight/Glass

| | |
|--|--------------------|
| Sunroof Type | • Electric sunroof |
| Front/rear electric windows | Front •/Rear • |
| One-touch window lifting function | • Front row |

Skylight/Glass (continued)

| | |
|---|---|
| Window anti-pinch function | <ul style="list-style-type: none">• |
| Car makeup mirror | <ul style="list-style-type: none">• Main driver's lamp; • co-pilot's lamp |
| Rear wiper | - |
| Side window multi-layer soundproof glass | <ul style="list-style-type: none">• Front row |

Interior and exterior color

| | |
|-----------------------|---|
| Exterior Color | color crystal black #000000 Jingyao White #EBECF1 Modern Gray #768699 deep sea blue #42567D |
| Interior Color | Black #000000 Black Brown #000000 #80563D |

Steering wheel/interior mirror

| | |
|---|--|
| Steering Wheel Material | <ul style="list-style-type: none">• Leather |
| Steering wheel position adjustment | <ul style="list-style-type: none">• Manual up and down front and rear adjustment |
| Multi-function steering wheel | <ul style="list-style-type: none">• |
| Heated Steering Wheel | - |
| Steering wheel memory | - |
| Trip computer display screen | <ul style="list-style-type: none">• Color |
| Full LCD instrument panel | <ul style="list-style-type: none">• |
| LCD instrument size | <ul style="list-style-type: none">• 10.2 inches |
| Interior rearview mirror function | <ul style="list-style-type: none">• Manual anti-glare |
| Gear shifting | <ul style="list-style-type: none">• Mechanical gear shift |
| ETC Device | <ul style="list-style-type: none">• |
| Dashboard screen material | <ul style="list-style-type: none">•TFT |

Intelligent configuration

| | |
|-----------------------------------|--|
| Connected Car Services | <ul style="list-style-type: none">• |
| OTA Updates | <ul style="list-style-type: none">• |
| 4G/5G Network | <ul style="list-style-type: none">•4G |
| Mobile APP remote function | <ul style="list-style-type: none">• Door control; • Vehicle status check/diagnostics; • Vehicle location / find my car |
| Active Noise Cancellation | <ul style="list-style-type: none">• |

Intelligent configuration (continued)

| | |
|-----------------------|---|
| Wi-Fi hotspots | • |
|-----------------------|---|

Driving Control

| | |
|-------------------------------------|-------------------------------|
| Driving mode switch | • Economy; • Standard/Comfort |
| Automatic parking | • |
| Hill start assist | • |
| Engine start-stop technology | • |

Driving Hardware

| | |
|---|-------------------|
| Front/rear parking radar | - |
| Driving Assistance Camera System | • Reversing image |
| Front perception camera | • Monocular |
| Number of cameras | • 2 |

In-car charging

| | |
|-----------------------------------|--|
| Multimedia/charging port | •Type-C |
| Number of USB/Type-C ports | • 2 in the front row/2 in the back row |

"●" = Standard equipment

"_" = Not available

"○" = Optional equipment.

Note: These are Chinese market vehicles. Warranty coverage is not available outside of China.