

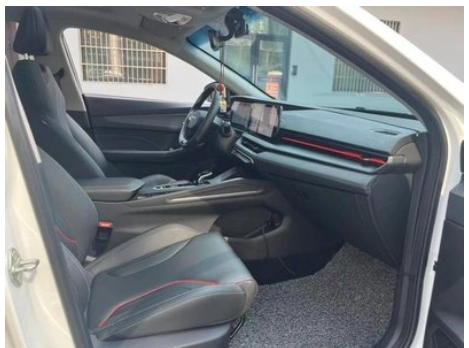
Vehicle Detail Report

Geely Auto Binrui 2024 Binrui COOL 1.5T DCT Longteng Edition

Basic Information

Brand	Geely
Mileage	24,000 km
Color	White
First Registration	2024-03-01
Transfer Count	0

Vehicle Images





Vehicle Condition

1. Original metal body panels with factory paint.

Configuration Information

Model Information

Model Name	Geely Auto Binrui 2024 Binrui COOL 1.5T DCT Longteng Edition
-------------------	--

Model Information (continued)

Launch Date	2024.03
-------------	---------

Basic parameters

Vehicle Class	compact car
Energy Type	Gasoline
Maximum Power (kW)	133
Maximum Torque (N·m)	290
Transmission	7-speed wet dual-clutch
Body Type	Sedan
Engine	1.5T 181 horsepower L4
Dimensions (L×W×H) (mm)	4710*1795*1455
Official 0-100 km/h Acceleration (s)	7.1
Top Speed (km/h)	210
Curb Weight (kg)	1325
Maximum Gross Weight (kg)	1715
WLTP Combined Fuel Consumption (L/100km)	5.9

engine

Engine Model	BHE15-EFZ
Displacement (mL)	1499
Displacement (L)	1.5
Induction Type	Turbocharging
Cylinder Arrangement	L
Number of Cylinders	4
Valves per Cylinder	4
Valve Train	DOHC
Maximum Power (PS)	181
Max Power Speed (rpm)	5500
Max Torque Speed (rpm)	2000-3500
Maximum net power (kW)	128
Fuel Grade	92.
Fuel Delivery System	Direct injection
Cylinder Head Material	Aluminum alloy

engine (continued)

Cylinder Block Material	Aluminum alloy
Engine layout	Horizontal

Screen/System

Central control color screen	<ul style="list-style-type: none">• Touch LCD screen
Infotainment Screen Size	<ul style="list-style-type: none">• 12.3 inches
Bluetooth/In-car Phone	<ul style="list-style-type: none">•
Voice recognition control system	<ul style="list-style-type: none">• Multimedia system;• Navigation;• Telephone;• Air conditioning;• Sunroof
In-vehicle intelligent system	<ul style="list-style-type: none">• Geely Galaxy OS
Car Intelligent Chip	<ul style="list-style-type: none">• ECARX E02

Body

Length (mm)	4710
Width (mm)	1795
Height (mm)	1455
Wheelbase (mm)	2670
Front Track (mm)	1536
Rear Track (mm)	1538
Door Opening Type	swing door
Number of Doors	4
Number of Seats	5
Fuel Tank Capacity (L)	50
Trunk volume (L)	480
Drag Coefficient (Cd)	-
Approach Angle (°)	14
Departure Angle (°)	19
Minimum Turning Radius (m)	5.35

Gearbox

Abbreviation	7-speed wet dual-clutch
Number of Gears	7
Transmission Type	Wet Dual-Clutch Transmission (DCT)

Chassis steering

Drive Type	Front-engine, Front-wheel drive (FF)
-------------------	--------------------------------------

Chassis steering (continued)

Front Suspension Type	MacPherson independent suspension
Rear Suspension Type	Torsion beam non-independent suspension
Power Steering Type	Electric power assistance
Vehicle structure	bearing type

Seat Configuration

Seat Material	<ul style="list-style-type: none">• Imitation leather
Main seat adjustment	<ul style="list-style-type: none">• Front and rear adjustment;• Backrest adjustment;• Height adjustment (2-way)
Co-seat adjustment method	<ul style="list-style-type: none">• Front and rear adjustment;• Backrest adjustment
Electric adjustment of driver's seat and passenger seat	Main/Deputy-
Front passenger seat rear adjustable buttons	-
Rear seat folding	<ul style="list-style-type: none">• Proportional down
Front/rear center armrest	Front •/Rear •
Rear cup holder	<ul style="list-style-type: none">•
Sports style seats	<ul style="list-style-type: none">•

Active safety

Anti-lock Braking System (ABS)	<ul style="list-style-type: none">•
Electronic Brakeforce Distribution (EBD/CBC)	<ul style="list-style-type: none">•
Brake Assist System (EBA/BAS/BA)	<ul style="list-style-type: none">•
Traction Control System (ASR/TCS/TRC)	<ul style="list-style-type: none">•
Electronic Stability Control (ESC/ESP/DSC)	<ul style="list-style-type: none">•
Tire Pressure Monitoring System (TPMS)	<ul style="list-style-type: none">• Tire pressure display
Seat Belt Reminder	<ul style="list-style-type: none">• Front row
ISOFIX Child Seat Anchors	<ul style="list-style-type: none">•
Lane Departure Warning System (LDWS)	-

Active safety (continued)

Autonomous Emergency Braking (AEB)	-
Driver Fatigue Detection	-

Air conditioning/refrigerator

Air conditioning temperature control method	• Automatic air conditioning
Rear Independent Climate Control	-
Rear seat air vents	•
Temperature zone control	-
Car air purifier	-
In-cabin PM2.5 Filter	-

Passive safety

Driver/passenger airbag	Main •/Deputy •
Front/rear side airbags	Front •/Rear-
Front/rear head airbags (curtain airbags)	-

Wheel brake

Front Brake Type	Ventilation disc
Rear Brake Type	Disc
Parking brake type	Electronic Parking
Front Tire Size	205/50 R17
Rear Tire Size	205/50 R17
Spare Tire Size	Not full-size
Spare tire placement	In the trunk

Audio/Interior Lighting

Number of speakers	• 6 speakers
---------------------------	--------------

Driving functions

Navigation traffic information display	•
Lane assist	-
Lane Keeping Assist System	-
Cruise control system	• Cruise control
Satellite navigation system	•

Driving functions (continued)

Map Brand	• Gaud
Parking Assist	-

Exterior lighting

Low beam light source	•LED
High beam light source	•LED
LED daytime running lights	-
Adaptive high and low beam	-
Automatic headlights	•
Height-adjustable headlights	•
Headlight Delay Off	•

Exterior mirrors

Exterior mirror function	• Electric adjustment; • Electric folding; • Mirror heating
---------------------------------	---

Appearance/anti-theft

Rim material	• Aluminum alloy
Electric trunk	-
Electronic engine immobilizer	•
Central locking system in the car	•
Key Type	• Remote key; • Bluetooth key
Keyless start system	•
Keyless entry function	• Driving position
Remote start function	•

Skylight/Glass

Sunroof Type	• Electric sunroof
Front/rear electric windows	Front •/Rear •
One-touch window lifting function	• Full vehicle
Window anti-pinch function	•
Car makeup mirror	• Main driving position; • First officer
Rear wiper	-

Interior and exterior color

Interior and exterior color (continued)

Exterior Color	sky blue #6583A9 Racing Grey #3D4B56 chasing light white #FFFFFF dazzle blue #99A8C3
Interior Color	Black/Phantom Orange:#000000/#EB5823

Steering wheel/interior mirror

Steering Wheel Material	• Cortex
Steering wheel position adjustment	• Manual up and down adjustment
Multi-function steering wheel	•
Heated Steering Wheel	-
Steering wheel memory	-
Trip computer display screen	• Color
Full LCD instrument panel	•
LCD instrument size	• 10.25 inches
Interior rearview mirror function	• Manual anti-glare
Gear shifting	• Electronic gear shift

Intelligent configuration

Connected Car Services	•
OTA Updates	•
4G/5G Network	•4G
Mobile APP remote function	•
Wi-Fi hotspots	•

Driving Control

Driving mode switch	• Sport; • Economy; • Standard/Comfort
Automatic parking	•
Hill start assist	•
Engine start-stop technology	•

Driving Hardware

Front/rear parking radar	Front-/Rear •
Driving Assistance Camera System	• 360-degree panoramic image
Number of cameras	• 4

Driving Hardware (continued)

Number of ultrasonic radars	• 3
Transparent chassis/540-degree imaging	•

In-car charging

Multimedia/charging port	•USB
Number of USB/Type-C ports	• 2 in the First row/1 in the 2nd-row

"●" = Standard equipment

"_" = Not available

"○" = Optional equipment.

Note: These are Chinese market vehicles. Warranty coverage is not available outside of China.