

Vehicle Detail Report

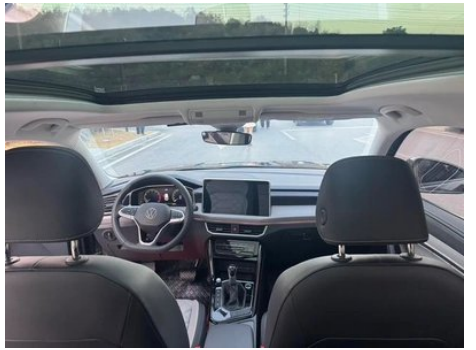
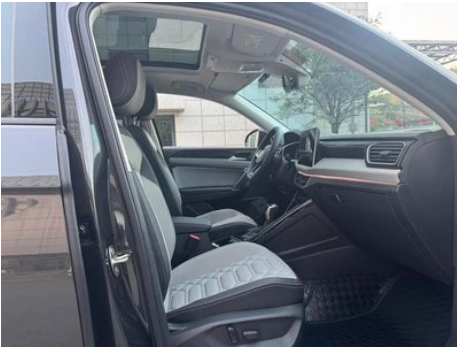
Volkswagen Tayron 2024 330TSI Two-wheel drive luxury Plus Advanced version

Basic Information

Brand	Volkswagen
Mileage	12,000 km
Color	Black
First Registration	2024-07-01
Transfer Count	0

Vehicle Images







Vehicle Condition

1. Driver's seat rails and frame, Signs of removal. 2. Front passenger seat rails and frame, Signs of removal.

Configuration Information

Model Information

Model Name	Tayron 2024 330TSI Front-Wheel Drive Luxury Plus Advanced Model
Launch Date	2023.10

Basic parameters

Vehicle Class	Mid-size SUV
Energy Type	Gasoline
Maximum Power (kW)	137
Maximum Torque (N·m)	320
Transmission	7-speed wet dual-clutch
Body Type	SUV
Engine	2.0T 186 horsepower L4
Dimensions (L×W×H) (mm)	4593*1860*1665
Official 0-100 km/h Acceleration (s)	9.3
Top Speed (km/h)	200
Curb Weight (kg)	1679
Maximum Gross Weight (kg)	2160
WLTP Combined Fuel Consumption (L/100km)	7.07

engine

Engine Model	EA888-DTH
Displacement (mL)	1984
Displacement (L)	2.0
Induction Type	Turbocharging
Cylinder Arrangement	L

engine (continued)

Number of Cylinders	4
Valves per Cylinder	4
Valve Train	DOHC
Maximum Power (PS)	186
Max Power Speed (rpm)	4150-6000
Max Torque Speed (rpm)	1600-4050
Maximum net power (kW)	137
Fuel Grade	95.
Fuel Delivery System	Direct injection
Cylinder Head Material	Aluminum alloy
Cylinder Block Material	Cast iron
Engine layout	Horizontal

Screen/System

Central control color screen	<ul style="list-style-type: none">• Touch LCD screen
Infotainment Screen Size	<ul style="list-style-type: none">• 12 inches
Bluetooth/In-car Phone	<ul style="list-style-type: none">•
Smartphone Integration/ Mirroring	<ul style="list-style-type: none">• Support CarPlay;• Support CarLife
Voice recognition control system	<ul style="list-style-type: none">• Multimedia system;• Navigation;• Telephone;• Air conditioning
In-vehicle intelligent system	<ul style="list-style-type: none">•IQ. Connectivity

Body

Length (mm)	4593
Width (mm)	1860
Height (mm)	1665
Wheelbase (mm)	2731
Front Track (mm)	1586
Rear Track (mm)	1576
Door Opening Type	swing door
Number of Doors	5
Number of Seats	5
Fuel Tank Capacity (L)	60
Trunk volume (L)	506

Body (continued)

Drag Coefficient (Cd)	-
Approach Angle (°)	19
Departure Angle (°)	19

Gearbox

Abbreviation	7-speed wet dual-clutch
Number of Gears	7
Transmission Type	Wet Dual-Clutch Transmission (DCT)

Chassis steering

Drive Type	Front-engine, Front-wheel drive (FF)
Front Suspension Type	MacPherson independent suspension
Rear Suspension Type	Multi-link independent suspension
Power Steering Type	Electric power assistance
Vehicle structure	bearing type

Seat Configuration

Seat Material	<ul style="list-style-type: none">• Imitation leather
Main seat adjustment	<ul style="list-style-type: none">• Front and rear adjustment;• Backrest adjustment;• Height adjustment (4-way);• Lumbar support (4-way)
Co-seat adjustment method	<ul style="list-style-type: none">• Front and rear adjustment;• Backrest adjustment;• Height adjustment (4-way)
Electric adjustment of driver's seat and passenger seat	Main •/Deputy •
Front seat functions	<input type="radio"/> Heating (USD 221); <input type="radio"/> Ventilation (USD 441)
Electric seat memory function	<input type="radio"/> Driving position
Front passenger seat rear adjustable buttons	-
Second row seat adjustment	<ul style="list-style-type: none">• Front and rear adjustment;• Backrest adjustment
Rear seat folding	<ul style="list-style-type: none">• Proportional down
Front/rear center armrest	Front •/Rear •
Rear cup holder	<ul style="list-style-type: none">•

Active safety

Active safety (continued)

Anti-lock Braking System (ABS)	•
Electronic Brakeforce Distribution (EBD/CBC)	•
Brake Assist System (EBA/BAS/BA)	•
Traction Control System (ASR/TCS/TRC)	•
Electronic Stability Control (ESC/ESP/DSC)	•
Tire Pressure Monitoring System (TPMS)	• Tire pressure alarm
Seat Belt Reminder	• Front row
ISOFIX Child Seat Anchors	•
Lane Departure Warning System (LDWS)	•
Autonomous Emergency Braking (AEB)	•
Driver Fatigue Detection	•
Forward Collision Warning (FCW)	•

Air conditioning/refrigerator

Air conditioning temperature control method	• Automatic air conditioning
Rear Independent Climate Control	•
Rear seat air vents	•
Temperature zone control	•
Car air purifier	•
In-cabin PM2.5 Filter	•

Passive safety

Driver/passenger airbag	Main •/Deputy •
Front/rear side airbags	Front •/Rear-
Front/rear head airbags (curtain airbags)	Front •/Rear •
Knee airbag	• Main driver knee airbag

Wheel brake

Front Brake Type	Ventilation disc
-------------------------	------------------

Wheel brake (continued)

Rear Brake Type	Disc
Parking brake type	Electronic Parking
Front Tire Size	235/55 R18
Rear Tire Size	235/55 R18
Spare Tire Size	Not full-size

Audio/Interior Lighting

Number of speakers	• 6 speakers
Interior ambient lighting	• Monochrome; ○ 30 color

Driving functions

Navigation traffic information display	•
Lane assist	-
Lane Keeping Assist System	•
Cruise control system	• Full speed adaptive cruise
Satellite navigation system	•
Driving assistance level	•L2
Lane centering	•
Road traffic sign recognition	•
Driver assistance systems	•Travel Assist
Hands-off detection	•
Parking Assist	-

Exterior lighting

Low beam light source	•LED
High beam light source	•LED
LED daytime running lights	•
Adaptive high and low beam	-
Automatic headlights	•
Height-adjustable headlights	•
Headlight Delay Off	•
Headlight rain and fog mode	•

Exterior mirrors

Exterior mirrors (continued)

Exterior mirror function	<ul style="list-style-type: none">• Electric adjustment;• Electric folding;○ Mirror memory;• Rearview mirror heating;• Automatic downward turning when reversing;• Automatic folding when locking the car
---------------------------------	--

Appearance/anti-theft

Rim material	<ul style="list-style-type: none">• Aluminum alloy
Electric trunk	<ul style="list-style-type: none">•
Electronic engine immobilizer	<ul style="list-style-type: none">•
Central locking system in the car	<ul style="list-style-type: none">•
Key Type	<ul style="list-style-type: none">• Remote key
Keyless start system	<ul style="list-style-type: none">•
Keyless entry function	<ul style="list-style-type: none">• Front row
Hands-free Trunk	<ul style="list-style-type: none">•
Electric trunk position memory	<ul style="list-style-type: none">•
Roof rack	<ul style="list-style-type: none">•

Skylight/Glass

Sunroof Type	<ul style="list-style-type: none">• Openable panoramic sunroof
Front/rear electric windows	Front •/Rear •
One-touch window lifting function	<ul style="list-style-type: none">• Full car
Window anti-pinch function	<ul style="list-style-type: none">•
Car makeup mirror	<ul style="list-style-type: none">• Main driver's lamp;• co-pilot's lamp
Rear wiper	<ul style="list-style-type: none">•
Rain sensor wiper function	<ul style="list-style-type: none">• Rainfall-sensing

Interior and exterior color

Exterior Color	Manganese stone black:#010101; Polar white:#FFFFFF; Lake mirror blue:#0882C5; Tin lime:#78788C; Sea blue:#0095C0
Interior Color	Black/Grey:#252B2A/#8C8D87; Brown:#8B7E85

Steering wheel/interior mirror

Steering wheel/interior mirror (continued)

Steering Wheel Material	• Cortex
Steering wheel position adjustment	• Manual up and down front and rear adjustment
Multi-function steering wheel	•
Heated Steering Wheel	•
Steering wheel memory	-
Trip computer display screen	• Color
Full LCD instrument panel	•
LCD instrument size	• 10.25 inches
Interior rearview mirror function	• Automatic anti-glare
Gear shifting	• Mechanical gear shift
ETC Device	○

Intelligent configuration

Connected Car Services	•
OTA Updates	-
4G/5G Network	•4G
Mobile APP remote function	•
Wi-Fi hotspots	•

Driving Control

Driving mode switch	• Sport; • Economy; • Standard/Comfort; • Customization/Personalization
Automatic parking	•
Energy recovery system	•
Engine start-stop technology	•

Driving Hardware

Front/rear parking radar	Front •/Rear •
Driving Assistance Camera System	• Reversing image; ○ 360-degree panoramic image (USD 441)

In-car charging

Multimedia/charging port	•USB;•Type-C
Number of USB/Type-C ports	• 3 in the front row/2 in the back row

In-car charging (continued)

Mobile phone wireless charging function	• Front row
Mobile phone wireless charging power	•15W

Optional Package

Optional Package	Seat ventilation and heating package (USD 0.15; including: front seat heating, front seat ventilation, multi-function exterior mirrors (with memory function), driver seat memory function); seat ventilation package (USD 0.15; includes: front seat ventilation, multi-function exterior mirrors (with memory function), driver seat memory function); Meteor rain transparent decorative board package (USD 294; Including: meteor rain transparent decorative board bag, 30-color adjustable distinguished interior style atmosphere lamp)
-------------------------	---

"●" = Standard equipment

"-" = Not available

"○" = Optional equipment.

Note: These are Chinese market vehicles. Warranty coverage is not available outside of China.