

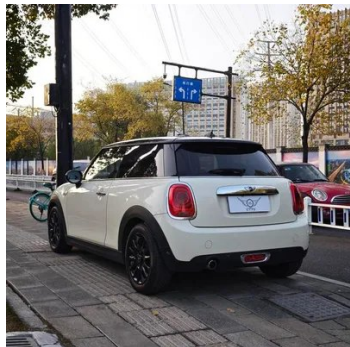
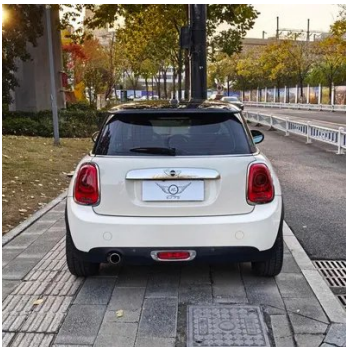
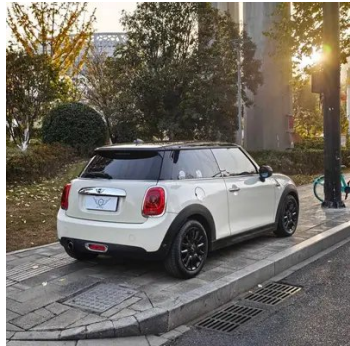
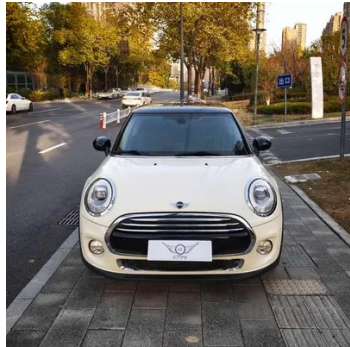
Vehicle Detail Report

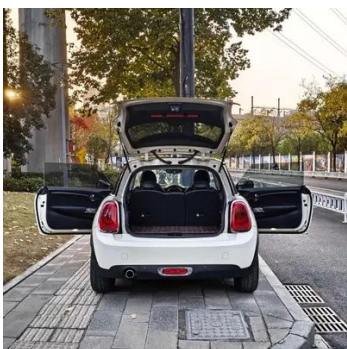
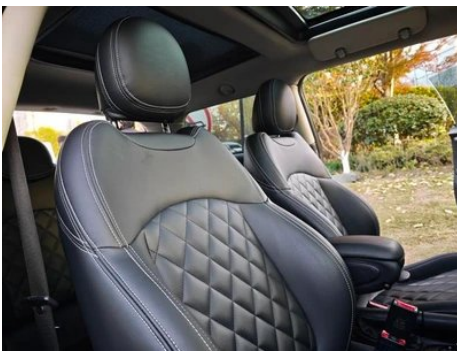
MINI 2016 1.5T COOPER performance pie

Basic Information

Brand	MINI
Mileage	153,000 km
Color	White
First Registration	2017-07-01
Transfer Count	3

Vehicle Images





Vehicle Condition

1. Inner side of left C-pillar, Scratch. 2. Inner side of right C-pillar, Scratch. 3. Spare wheel well, Dust and sand, Water marks. 4. Driver seat rails and frame, Signs of disassembly. 5. Passenger seat rails and frame, Signs of disassembly. 6. Interior headliner, Dirt and stains. 7. Left rear fender, Paint repair, Bodywork repair. 8. Right rear fender, Paint repair, Bodywork repair. 9. Interior headliner, Dirt and stains.

Configuration Information

Model Information

Model Name	MINI 2016 1.5T COOPER performance pie
Launch Date	2016.04

Basic parameters

Vehicle Class	Small car
Energy Type	Gasoline
Maximum Power (kW)	100
Maximum Torque (N·m)	220
Transmission	6-speed manual integration
Body Type	Hatchback
Engine	1.5L 136 hp L3
Dimensions (L×W×H) (mm)	3832*1727*1450
Official 0-100 km/h Acceleration (s)	7.8
Top Speed (km/h)	210
Curb Weight (kg)	1240
Maximum Gross Weight (kg)	-
NEDC Combined Fuel Consumption (L/100km)	5.4

engine

Engine Model	B38A15A
Displacement (mL)	1499
Displacement (L)	1.5
Induction Type	Turbocharging
Cylinder Arrangement	L
Number of Cylinders	3
Valves per Cylinder	4
Valve Train	DOHC
Maximum Power (PS)	136
Max Power Speed (rpm)	4500-6000
Max Torque Speed (rpm)	1250
Maximum net power (kW)	-
Fuel Grade	95.
Fuel Delivery System	Direct injection

engine (continued)

Cylinder Head Material	Aluminum alloy
Cylinder Block Material	Aluminum alloy

Screen/System

Central control color screen	<ul style="list-style-type: none">•
Infotainment Screen Size	•6.5 inches; ○8.8 inches
Bluetooth/In-car Phone	<ul style="list-style-type: none">•

Body

Length (mm)	3832
Width (mm)	1727
Height (mm)	1450
Wheelbase (mm)	2495
Front Track (mm)	-
Rear Track (mm)	-
Door Opening Type	-
Number of Doors	3
Number of Seats	4
Fuel Tank Capacity (L)	40
Trunk volume (L)	211
Drag Coefficient (Cd)	-

Gearbox

Abbreviation	6-speed manual integration
Number of Gears	6
Transmission Type	Automatic Transmission with Manual Mode (AT)

Chassis steering

Drive Type	Front-engine, Front-wheel drive (FF)
Front Suspension Type	MacPherson independent suspension
Rear Suspension Type	Multi-link independent suspension
Power Steering Type	Electric power assistance
Vehicle structure	bearing type

Seat Configuration

Seat Material	<ul style="list-style-type: none">• Leather
----------------------	---

Seat Configuration (continued)

Main seat adjustment	<ul style="list-style-type: none">• Front and rear adjustment;• Backrest adjustment;• Height adjustment (2-way)
Co-seat adjustment method	<ul style="list-style-type: none">• Front and rear adjustment;• Backrest adjustment
Electric adjustment of driver's seat and passenger seat	-
Front seat functions	○ Heating (USD 412)
Front passenger seat rear adjustable buttons	-
Rear seat folding	<ul style="list-style-type: none">• Proportional down
Front/rear center armrest	Front •/Rear-
Rear cup holder	-
Sports style seats	<ul style="list-style-type: none">•

Active safety

Anti-lock Braking System (ABS)	<ul style="list-style-type: none">•
Electronic Brakeforce Distribution (EBD/CBC)	<ul style="list-style-type: none">•
Brake Assist System (EBA/BAS/BA)	<ul style="list-style-type: none">•
Traction Control System (ASR/TCS/TRC)	<ul style="list-style-type: none">•
Electronic Stability Control (ESC/ESP/DSC)	<ul style="list-style-type: none">•
Tire Pressure Monitoring System (TPMS)	<ul style="list-style-type: none">•
Seat Belt Reminder	<ul style="list-style-type: none">•
ISOFIX Child Seat Anchors	<ul style="list-style-type: none">•
Lane Departure Warning System (LDWS)	-
Autonomous Emergency Braking (AEB)	-
Driver Fatigue Detection	-

Air conditioning/refrigerator

Air conditioning temperature control method	<ul style="list-style-type: none">• Manual air conditioning;○ Automatic air conditioning (USD 515)
Rear Independent Climate Control	-

Air conditioning/refrigerator (continued)

Rear seat air vents	-
Temperature zone control	-
Car air purifier	-
In-cabin PM2.5 Filter	-

Passive safety

Driver/passenger airbag	Main •/Deputy •
Front/rear side airbags	Front •/Rear-
Front/rear head airbags (curtain airbags)	Front •/Rear •
Run-flat tires	•

Wheel brake

Front Brake Type	Ventilation disc
Rear Brake Type	Disc
Parking brake type	handbrake
Front Tire Size	205/45 R17
Rear Tire Size	205/45 R17
Spare Tire Size	None

Audio/Interior Lighting

Speaker Brand Name	○ Harman/Kardon Harman Kardon (USD 1,176)
Number of speakers	○≥12 speakers; •6-7 speakers
Interior ambient lighting	•

Driving functions

Navigation traffic information display	-
Lane assist	-
Lane Keeping Assist System	-
Cruise control system	• Cruise control
Satellite navigation system	•
Parking Assist	○

Exterior lighting

Low beam light source	•LED
High beam light source	•LED
LED daytime running lights	•

Exterior lighting (continued)

Adaptive high and low beam	-
Automatic headlights	•
Front fog lights	•
Height-adjustable headlights	•
Headlight Delay Off	-
Turn headlights	○

Exterior mirrors

Exterior mirror function	• Electric adjustment; • Electric folding; • Rearview mirror heating; ○ Automatic anti-glare (USD 147)
---------------------------------	--

Appearance/anti-theft

Rim material	• Aluminum alloy
Electric trunk	-
Electronic engine immobilizer	•
Central locking system in the car	•
Key Type	• Remote key
Keyless start system	•
Keyless entry function	○
Roof rack	○
Frameless door design	•

Skylight/Glass

Sunroof Type	• Panoramic sunroof
Front/rear electric windows	Front •/Rear-
One-touch window lifting function	• Full car
Window anti-pinch function	•
Car makeup mirror	•
Rear wiper	•
Rain sensor wiper function	•

Interior and exterior color

Interior and exterior color (continued)

Exterior Color	British green:#003C1A; Electronic blue:#0F9CCE; Pepper white:#ECE0C1; Gold and stone green:#000335; Flaming red:#CF181F; Lava orange:#D3842E; Deep sea blue:#152C60; Fine silver:#C5C3BE; Moon gray:#5C5E5F; Midnight black:#020506
Interior Color	Carbon Black: #000000 Carbon, Black, Deep Truffle:#000000/#373232

Steering wheel/interior mirror

Steering Wheel Material	• Cortex
Steering wheel position adjustment	• Manual up and down front and rear adjustment
Multi-function steering wheel	•
Heated Steering Wheel	-
Steering wheel memory	-
Trip computer display screen	•
Full LCD instrument panel	-
Interior rearview mirror function	• Automatic anti-glare
HUD Head Up Digital Display	○

Intelligent configuration

Connected Car Services	○
OTA Updates	-

Driving Control

Automatic parking	-
Hill start assist	•
Engine start-stop technology	•

Driving Hardware

Front/rear parking radar	Front ○/Rear •
Driving Assistance Camera System	○ Reversing image

In-car charging

Multimedia/charging port	•USB;•AUX
---------------------------------	-----------

"●" = Standard equipment

"□" = Not available

"○" = Optional equipment.

Note: These are Chinese market vehicles. Warranty coverage is not available outside of China.