

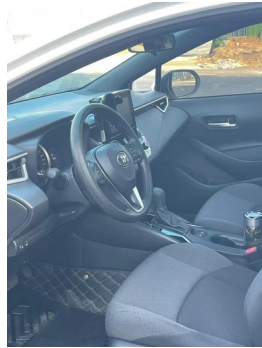
Vehicle Detail Report

Toyota Levin 2024 185T Luxury Edition

Basic Information

Brand	Toyota
Mileage	7,000 km
Color	White
First Registration	2024-09-01
Transfer Count	1

Vehicle Images





Vehicle Condition

1. Original metal body panels with factory paint.

Configuration Information

Model Information

Model Name	Toyota Levin 2024 185T CVT Luxury Edition
Launch Date	2024.03

Basic parameters

Vehicle Class	compact car
Energy Type	Gasoline
Maximum Power (kW)	85
Maximum Torque (N·m)	185
Transmission	CVT continuously variable (simulating 10 gears)
Body Type	Sedan
Engine	1.2T 116 horsepower L4
Dimensions (L×W×H) (mm)	4640*1780*1455
Official 0-100 km/h Acceleration (s)	-
Top Speed (km/h)	180
Curb Weight (kg)	1360
Maximum Gross Weight (kg)	1770
WLTP Combined Fuel Consumption (L/100km)	5.95

engine

Engine Model	9NR
Displacement (mL)	1197
Displacement (L)	1.2
Induction Type	Turbocharging
Cylinder Arrangement	L

engine (continued)

Number of Cylinders	4
Valves per Cylinder	4
Compression Ratio	10
Valve Train	DOHC
Bore (mm)	71.5
Stroke (mm)	74.5
Maximum Power (PS)	116
Max Power Speed (rpm)	5200-5600
Max Torque Speed (rpm)	1500-4000
Maximum net power (kW)	85
Fuel Grade	92.
Fuel Delivery System	Direct injection
Cylinder Head Material	Aluminum alloy
Cylinder Block Material	Aluminum alloy
Engine layout	Horizontal
Engine-specific technologies	VVT-iW

Screen/System

Central control color screen	<ul style="list-style-type: none">• Touch LCD screen
Infotainment Screen Size	<ul style="list-style-type: none">• 10.25 inches
Bluetooth/In-car Phone	<ul style="list-style-type: none">•
Smartphone Integration/Mirroring	<ul style="list-style-type: none">• Apple CarPlay support;• Baidu CarLife support;• HUAWEI HiCar support

Body

Length (mm)	4640
Width (mm)	1780
Height (mm)	1455
Wheelbase (mm)	2700
Front Track (mm)	1527
Rear Track (mm)	1526
Door Opening Type	swing door
Number of Doors	4
Number of Seats	5

Body (continued)

Fuel Tank Capacity (L)	50
Trunk volume (L)	471
Drag Coefficient (Cd)	-
Approach Angle (°)	13
Departure Angle (°)	16

Gearbox

Abbreviation	CVT continuously variable (simulating 10 gears)
Number of Gears	10
Transmission Type	Continuously Variable Transmission (CVT)

Chassis steering

Drive Type	Front-engine, Front-wheel drive (FF)
Front Suspension Type	MacPherson independent suspension
Rear Suspension Type	E-type multi-link independent suspension
Power Steering Type	Electric power assistance
Vehicle structure	bearing type

Seat Configuration

Seat Material	• Fabric ○ Faux leather
Main seat adjustment	• Front and rear adjustment; • Backrest adjustment; • Height adjustment (2-way)
Co-seat adjustment method	• Front and rear adjustment; • Backrest adjustment
Electric adjustment of driver's seat and passenger seat	-
Front passenger seat rear adjustable buttons	-
Rear seat folding	• Proportional down
Front/rear center armrest	Front •/Rear-
Rear cup holder	-

Active safety

Anti-lock Braking System (ABS)	•
Electronic Brakeforce Distribution (EBD/CBC)	•

Active safety (continued)

Brake Assist System (EBA/BAS/BA)	•
Traction Control System (ASR/TCS/TRC)	•
Electronic Stability Control (ESC/ESP/DSC)	•
Tire Pressure Monitoring System (TPMS)	• Tire pressure display
Seat Belt Reminder	• Full vehicle
ISOFIX Child Seat Anchors	•
Lane Departure Warning System (LDWS)	•
Autonomous Emergency Braking (AEB)	•
Driver Fatigue Detection	-
Forward Collision Warning (FCW)	•
Emergency Call System (eCall)	•

Air conditioning/refrigerator

Air conditioning temperature control method	• Manual air conditioning
Rear Independent Climate Control	-
Rear seat air vents	•
Temperature zone control	-
Car air purifier	-
In-cabin PM2.5 Filter	•

Passive safety

Driver/passenger airbag	Main •/Deputy •
Front/rear side airbags	Front •/Rear-
Front/rear head airbags (curtain airbags)	Front •/Rear •
Knee airbag	• Driver's knee airbag
Passenger seat cushion airbag	•

Wheel brake

Front Brake Type	Ventilation disc
-------------------------	------------------

Wheel brake (continued)

Rear Brake Type	Disc
Parking brake type	Electronic Parking
Front Tire Size	205/55 R16
Rear Tire Size	205/55 R16
Spare Tire Size	Not full-size

Audio/Interior Lighting

Number of speakers	• 4 speakers
---------------------------	--------------

Driving functions

Navigation traffic information display	-
Lane assist	-
Lane Keeping Assist System	•
Cruise control system	• Full speed adaptive cruise
Satellite navigation system	-
Driving assistance level	•L2
Lane centering	•
Driver assistance systems	•Toyota Safety Sense
Parking Assist	-

Exterior lighting

Low beam light source	•LED
High beam light source	•LED
LED daytime running lights	•
Adaptive high and low beam	•
Automatic headlights	•
Height-adjustable headlights	•
Headlight Delay Off	-

Exterior mirrors

Exterior mirror function	• Electric adjustment
---------------------------------	-----------------------

Appearance/anti-theft

Rim material	• Aluminum alloy
Electric trunk	-

Appearance/anti-theft (continued)

Electronic engine immobilizer	<ul style="list-style-type: none">•
Central locking system in the car	<ul style="list-style-type: none">•
Key Type	<ul style="list-style-type: none">• Remote key
Keyless start system	<ul style="list-style-type: none">•
Keyless entry function	<ul style="list-style-type: none">• Front row

Skylight/Glass

Sunroof Type	<ul style="list-style-type: none">• Electric sunroof
Front/rear electric windows	Front •/Rear •
One-touch window lifting function	<ul style="list-style-type: none">• Full vehicle
Window anti-pinch function	<ul style="list-style-type: none">•
Car makeup mirror	<ul style="list-style-type: none">• Main driving position;• First officer
Rear wiper	-

Interior and exterior color

Exterior Color	Sky White #FEFEFE Opal Silver #D0D0D0 Platinum Pearl White #DCE2E0 ink crystal black #000000 titanium ash #61696F Red Flame #C81414 Coral red #820305 Nebula Purple #320A6E
Interior Color	Black:#414544; Black/Grey:#000000/#E6E6; Black/Brown:#000000/#7A4E41

Steering wheel/interior mirror

Steering Wheel Material	<ul style="list-style-type: none">• Plastic
Steering wheel position adjustment	<ul style="list-style-type: none">• Manual up and down front and rear adjustment
Multi-function steering wheel	<ul style="list-style-type: none">•
Heated Steering Wheel	-
Steering wheel memory	-
Trip computer display screen	<ul style="list-style-type: none">• Color
Full LCD instrument panel	-
LCD instrument size	<ul style="list-style-type: none">• 4.2 inches

Steering wheel/interior mirror (continued)

Interior rearview mirror function	<ul style="list-style-type: none">• Manual anti-glare
Gear shifting	<ul style="list-style-type: none">• Mechanical gear shift
ETC Device	○

Intelligent configuration

Connected Car Services	-
OTA Updates	<ul style="list-style-type: none">•
Mobile APP remote function	<ul style="list-style-type: none">• Door control Climate control Vehicle Condition Query Diagnosis Vehicle positioning Find car Car Owner Services (Find charging pile Gas station Parking, etc.) Appointment maintenance Maintenance

Driving Control

Driving mode switch	<ul style="list-style-type: none">• Movement
Automatic parking	<ul style="list-style-type: none">•
Hill start assist	<ul style="list-style-type: none">•
Engine start-stop technology	<ul style="list-style-type: none">•

Driving Hardware

Front/rear parking radar	-
Driving Assistance Camera System	<ul style="list-style-type: none">• Reversing image
Number of cameras	<ul style="list-style-type: none">• 2
Millimeter wave radar quantity	<ul style="list-style-type: none">• 1

In-car charging

Multimedia/charging port	<ul style="list-style-type: none">•USB
Number of USB/Type-C ports	<ul style="list-style-type: none">• 1 front row/1 back row

Optional Package

Optional Package	Premium Leather Option Bag (2000 yuan Contains Premium Leather Seats Inner door armrest Front center armrest Premium soft front door trim)
-------------------------	--

"●" = Standard equipment

"□" = Not available

"○" = Optional equipment.

Note: These are Chinese market vehicles. Warranty coverage is not available outside of China.