

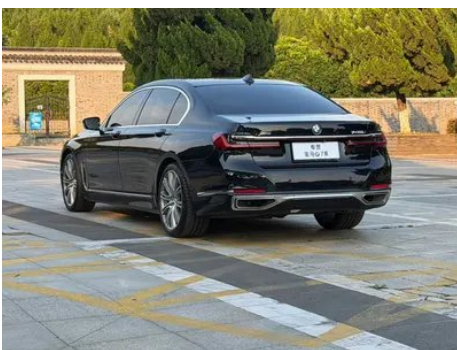
# Vehicle Detail Report

## BMW 7 Series 2019 Restyling 740Li xDrive Administrative Luxury Set

### Basic Information

Brand	BMW
Mileage	150,000 km
Color	Black
First Registration	2019-10-01
Transfer Count	0

### Vehicle Images





## Vehicle Condition

1. Right rocker panel, Scratch damage. 2. Inner side of left A-pillar, Deformation. 3. Left rear quarter panel, Paint repair. 4. Right rear quarter panel, Deformation, Paint repair, Body panel repair.

## Configuration Information

### Model Information

<b>Model Name</b>	BMW 7 Series 2019 Restyling 740Li xDrive Administrative Luxury Set
<b>Launch Date</b>	2019.07

### Basic parameters

<b>Vehicle Class</b>	Large vehicle
<b>Energy Type</b>	Gasoline
<b>Maximum Power (kW)</b>	250
<b>Maximum Torque (N·m)</b>	450
<b>Transmission</b>	8-gear manual integration
<b>Body Type</b>	Sedan
<b>Engine</b>	3.0T 340 horsepower L6
<b>Dimensions (L×W×H) (mm)</b>	5273*1902*1498
<b>Official 0-100 km/h Acceleration (s)</b>	5.1
<b>Top Speed (km/h)</b>	250
<b>Curb Weight (kg)</b>	2048
<b>Maximum Gross Weight (kg)</b>	-
<b>NEDC Combined Fuel Consumption (L/100km)</b>	7.9

### engine

<b>Engine Model</b>	B58B30C
<b>Displacement (mL)</b>	2998
<b>Displacement (L)</b>	3.0
<b>Induction Type</b>	Turbocharging

## engine (continued)

<b>Cylinder Arrangement</b>	L
<b>Number of Cylinders</b>	6
<b>Valves per Cylinder</b>	4
<b>Valve Train</b>	DOHC
<b>Maximum Power (PS)</b>	340
<b>Max Power Speed (rpm)</b>	5500-6500
<b>Max Torque Speed (rpm)</b>	1500-5200
<b>Maximum net power (kW)</b>	250
<b>Fuel Grade</b>	95.
<b>Fuel Delivery System</b>	Direct injection
<b>Cylinder Head Material</b>	Aluminum alloy
<b>Cylinder Block Material</b>	Aluminum alloy
<b>Engine layout</b>	Longitudinal

## Screen/System

<b>Central control color screen</b>	<ul style="list-style-type: none"><li>• Touch LCD screen</li></ul>
<b>Infotainment Screen Size</b>	<ul style="list-style-type: none"><li>• 10.25 inches</li></ul>
<b>Bluetooth/In-car Phone</b>	<ul style="list-style-type: none"><li>•</li></ul>
<b>Smartphone Integration/ Mirroring</b>	<ul style="list-style-type: none"><li>• Apple CarPlay support</li></ul>
<b>Voice recognition control system</b>	<ul style="list-style-type: none"><li>• Multimedia system;</li><li>• Navigation;</li><li>• Telephone</li></ul>
<b>Rear LCD screen</b>	<ul style="list-style-type: none"><li>•</li></ul>
<b>Rear multimedia control</b>	<ul style="list-style-type: none"><li>•</li></ul>
<b>Gesture Control</b>	<ul style="list-style-type: none"><li>•</li></ul>

## Body

<b>Length (mm)</b>	5273
<b>Width (mm)</b>	1902
<b>Height (mm)</b>	1498
<b>Wheelbase (mm)</b>	3210
<b>Front Track (mm)</b>	-
<b>Rear Track (mm)</b>	-
<b>Door Opening Type</b>	swing door
<b>Number of Doors</b>	4
<b>Number of Seats</b>	4

## Body (continued)

<b>Fuel Tank Capacity (L)</b>	78
<b>Trunk volume (L)</b>	-
<b>Drag Coefficient (Cd)</b>	-

## Gearbox

<b>Abbreviation</b>	8-gear manual integration
<b>Number of Gears</b>	8
<b>Transmission Type</b>	Automatic Transmission with Manual Mode (AT)

## Chassis steering

<b>Drive Type</b>	Front-engine, All-wheel drive (F-AWD)
<b>Four-wheel drive</b>	Timely four-wheel drive
<b>Central differential structure</b>	Multi-plate clutch
<b>Front Suspension Type</b>	Double wishbone independent suspension
<b>Rear Suspension Type</b>	Multi-link independent suspension
<b>Power Steering Type</b>	Electric power assistance
<b>Vehicle structure</b>	bearing type

## Seat Configuration

<b>Seat Material</b>	• Leather
<b>Main seat adjustment</b>	• Front-to-back adjustment; • Backrest adjustment; • Height adjustment (4-way); • Shoulder adjustment; • Leg rest adjustment; • Lumbar support (4-way)
<b>Co-seat adjustment method</b>	• Front and rear adjustment; • Backrest adjustment; • Height adjustment (4-way); • Leg support adjustment
<b>Electric adjustment of driver's seat and passenger seat</b>	Main •/Deputy •
<b>Front seat functions</b>	• Heating; • Ventilation; • Massage (driving only)
<b>Electric seat memory function</b>	• Driver's seat; • Passenger seat; • Rear seats
<b>Front passenger seat rear adjustable buttons</b>	•

## Seat Configuration (continued)

<b>Second row seat adjustment</b>	<ul style="list-style-type: none"><li>• Front and rear adjustment;</li><li>• Backrest adjustment;</li><li>• Height adjustment;</li><li>• Lumbar adjustment;</li><li>• Leg support adjustment</li></ul>
<b>Front/rear center armrest</b>	Front •/Rear •
<b>Rear cup holder</b>	<ul style="list-style-type: none"><li>•</li></ul>
<b>Second row seat functions</b>	<ul style="list-style-type: none"><li>• Heating;</li><li>• Ventilation;</li><li>• Massage</li></ul>
<b>Second row independent seats</b>	<ul style="list-style-type: none"><li>•</li></ul>
<b>Second row seats electrically adjustable</b>	<ul style="list-style-type: none"><li>•</li></ul>
<b>Rear small table</b>	<ul style="list-style-type: none"><li>•</li></ul>

## Active safety

<b>Anti-lock Braking System (ABS)</b>	<ul style="list-style-type: none"><li>•</li></ul>
<b>Electronic Brakeforce Distribution (EBD/CBC)</b>	<ul style="list-style-type: none"><li>•</li></ul>
<b>Brake Assist System (EBA/BAS/BA)</b>	<ul style="list-style-type: none"><li>•</li></ul>
<b>Traction Control System (ASR/TCS/TRC)</b>	<ul style="list-style-type: none"><li>•</li></ul>
<b>Electronic Stability Control (ESC/ESP/DSC)</b>	<ul style="list-style-type: none"><li>•</li></ul>
<b>Tire Pressure Monitoring System (TPMS)</b>	<ul style="list-style-type: none"><li>• Tire pressure display</li></ul>
<b>Seat Belt Reminder</b>	<ul style="list-style-type: none"><li>• Front row</li></ul>
<b>ISOFIX Child Seat Anchors</b>	<ul style="list-style-type: none"><li>•</li></ul>
<b>Lane Departure Warning System (LDWS)</b>	<ul style="list-style-type: none"><li>•</li></ul>
<b>Autonomous Emergency Braking (AEB)</b>	<ul style="list-style-type: none"><li>•</li></ul>
<b>Driver Fatigue Detection</b>	<ul style="list-style-type: none"><li>•</li></ul>
<b>Emergency Call System (eCall)</b>	<ul style="list-style-type: none"><li>•</li></ul>
<b>Built-in Dashcam</b>	<ul style="list-style-type: none"><li>•</li></ul>

## Air conditioning/refrigerator

<b>Air conditioning temperature control method</b>	<ul style="list-style-type: none"><li>• Automatic air conditioning</li></ul>
--	--

## Air conditioning/refrigerator (continued)

<b>Rear Independent Climate Control</b>	•
<b>Rear seat air vents</b>	•
<b>Temperature zone control</b>	•
<b>Car air purifier</b>	-
<b>In-cabin PM2.5 Filter</b>	•
<b>Car fragrance device</b>	•

## Passive safety

<b>Driver/passenger airbag</b>	Main •/Deputy •
<b>Front/rear side airbags</b>	Front •/Rear-
<b>Front/rear head airbags (curtain airbags)</b>	Front •/Rear •
<b>Run-flat tires</b>	•

## Wheel brake

<b>Front Brake Type</b>	Ventilation disc
<b>Rear Brake Type</b>	Ventilation disc
<b>Parking brake type</b>	Electronic Parking
<b>Front Tire Size</b>	245/40 R20
<b>Rear Tire Size</b>	275/35 R20
<b>Spare Tire Size</b>	None

## Audio/Interior Lighting

<b>Speaker Brand Name</b>	• Bowers & Wilkins Bao Hua Wei Jian
<b>Number of speakers</b>	• $\geq 12$ horns
<b>Interior ambient lighting</b>	• 11 colors
<b>Touch reading light</b>	•

## Driving functions

<b>Navigation traffic information display</b>	•
<b>Lane assist</b>	•
<b>Lane Keeping Assist System</b>	•
<b>Cruise control system</b>	• Full speed adaptive cruise
<b>Satellite navigation system</b>	•
<b>Rear Cross Traffic Alert</b>	•

## Driving functions (continued)

<b>Road traffic sign recognition</b>	<ul style="list-style-type: none"><li>•</li></ul>
<b>Parking Assist</b>	<ul style="list-style-type: none"><li>•</li></ul>

## Exterior lighting

<b>Low beam light source</b>	<ul style="list-style-type: none"><li>•LED</li></ul>
<b>High beam light source</b>	<ul style="list-style-type: none"><li>• Laser</li></ul>
<b>LED daytime running lights</b>	<ul style="list-style-type: none"><li>•</li></ul>
<b>Adaptive high and low beam</b>	<ul style="list-style-type: none"><li>•</li></ul>
<b>Automatic headlights</b>	<ul style="list-style-type: none"><li>•</li></ul>
<b>Height-adjustable headlights</b>	<ul style="list-style-type: none"><li>•</li></ul>
<b>Headlight Delay Off</b>	<ul style="list-style-type: none"><li>•</li></ul>
<b>Turn headlights</b>	<ul style="list-style-type: none"><li>•</li></ul>
<b>Turn signal lamp</b>	<ul style="list-style-type: none"><li>•</li></ul>

## Exterior mirrors

<b>Exterior mirror function</b>	<ul style="list-style-type: none"><li>• Electric adjustment;</li><li>• Electric folding;</li><li>• Rearview mirror memory;</li><li>• Rearview mirror heating;</li><li>• Automatic downturning when reversing;</li><li>• Automatic folding when locked;</li><li>• Automatic anti-glare</li></ul>
---------------------------------	---

## Appearance/anti-theft

<b>Rim material</b>	<ul style="list-style-type: none"><li>• Aluminum alloy</li></ul>
<b>Electric trunk</b>	<ul style="list-style-type: none"><li>•</li></ul>
<b>Electronic engine immobilizer</b>	<ul style="list-style-type: none"><li>•</li></ul>
<b>Central locking system in the car</b>	<ul style="list-style-type: none"><li>•</li></ul>
<b>Key Type</b>	<ul style="list-style-type: none"><li>• Touchscreen LCD key</li></ul>
<b>Keyless start system</b>	<ul style="list-style-type: none"><li>•</li></ul>
<b>Keyless entry function</b>	<ul style="list-style-type: none"><li>• Full vehicle</li></ul>
<b>Hands-free Trunk</b>	<ul style="list-style-type: none"><li>•</li></ul>
<b>Remote start function</b>	○(USD 441)
<b>Active closed grille</b>	<ul style="list-style-type: none"><li>•</li></ul>
<b>Electric door closing</b>	<ul style="list-style-type: none"><li>• Full vehicle</li></ul>

## Skylight/Glass

<b>Sunroof Type</b>	<ul style="list-style-type: none"><li>• Sectional electric sunroof</li></ul>
---------------------	--

## Skylight/Glass (continued)

<b>Front/rear electric windows</b>	Front •/Rear •
<b>One-touch window lifting function</b>	• Full vehicle
<b>Window anti-pinch function</b>	•
<b>Rear windshield sunshade</b>	•
<b>Car makeup mirror</b>	• Driver's side ambient light; • Passenger-side ambient light; • Rear-row ambient light
<b>Rear wiper</b>	-
<b>Rain sensor wiper function</b>	• Rainfall-sensing
<b>Rear side window sunshades</b>	• Electric

## Interior and exterior color

<b>Exterior Color</b>	blue crystal black #2E3440 Gem Green #252425 bernina gray #49484E tourmaline gray #5D564C Glacier Silver #949A9C Burgundy red #401422 pure metallic silver #A0A0A0 Dan Quan Stone Blue #05526E imperial blue #273042 Gourmet Brown #554006 Polar Gray #40454B Crystal white #FFFFFF cashmi silver #B0B2A7 Ore White #E7E7E7 Placer gold stone red #820A0A Deep brown #503C05 Mysterious Gray #3C3C3C Mysterious Silver #AAAFB4
<b>Interior Color</b>	Black truffle brown #000000 #5E1706 Amalien Red Black #960A0A #000000 Black #000000 Black kaishi beige #000000 #DCB496 Black smoky white #000000 #FFFFFF Black Yun Jin Hong #000000 #960A0A

## Steering wheel/interior mirror

<b>Steering Wheel Material</b>	• Leather
<b>Steering wheel position adjustment</b>	• Electric up and down front and rear adjustment
<b>Multi-function steering wheel</b>	•
<b>Heated Steering Wheel</b>	•
<b>Steering wheel memory</b>	•

## Steering wheel/interior mirror (continued)

<b>Trip computer display screen</b>	<ul style="list-style-type: none"><li>• Color</li></ul>
<b>Full LCD instrument panel</b>	<ul style="list-style-type: none"><li>•</li></ul>
<b>LCD instrument size</b>	<ul style="list-style-type: none"><li>• 12.3 inches</li></ul>
<b>Interior rearview mirror function</b>	<ul style="list-style-type: none"><li>• Automatic anti-glare</li></ul>
<b>HUD Head Up Digital Display</b>	<ul style="list-style-type: none"><li>•</li></ul>

## Intelligent configuration

<b>Connected Car Services</b>	<ul style="list-style-type: none"><li>•</li></ul>
<b>OTA Updates</b>	-

## Driving Control

<b>Driving mode switch</b>	<ul style="list-style-type: none"><li>• Sport; • Economy; • Standard/Comfort</li></ul>
<b>Automatic parking</b>	<ul style="list-style-type: none"><li>•</li></ul>
<b>Hill start assist</b>	<ul style="list-style-type: none"><li>•</li></ul>
<b>Variable suspension function</b>	<ul style="list-style-type: none"><li>• Suspension damping adjustment;</li><li>• Suspension height adjustment</li></ul>
<b>Air Suspension</b>	<ul style="list-style-type: none"><li>•</li></ul>
<b>Engine start-stop technology</b>	<ul style="list-style-type: none"><li>•</li></ul>
<b>Integral Active Steering</b>	○(USD 2,059)

## Driving Hardware

<b>Front/rear parking radar</b>	Front •/Rear •
<b>Driving Assistance Camera System</b>	<ul style="list-style-type: none"><li>• 360-degree panoramic image</li></ul>

## In-car charging

<b>Multimedia/charging port</b>	<ul style="list-style-type: none"><li>•USB;•HDMI;•Type-C</li></ul>
<b>Number of USB/Type-C ports</b>	<ul style="list-style-type: none"><li>• 2 in the front row/2 in the back row; ○ 2 in the front row/4 in the back row</li></ul>
<b>Mobile phone wireless charging function</b>	<ul style="list-style-type: none"><li>• Front row</li></ul>

## Optional Package

<b>Optional Package</b>	5 Seat Edition Set (0 yuan Contains 5 Seat Edition Set) All Season Suit 2 (3000 yuan Contains Remote engine start)
-------------------------	--

---

"●" = Standard equipment

"□" = Not available

"○" = Optional equipment.

Note: These are Chinese market vehicles. Warranty coverage is not available outside of China.