

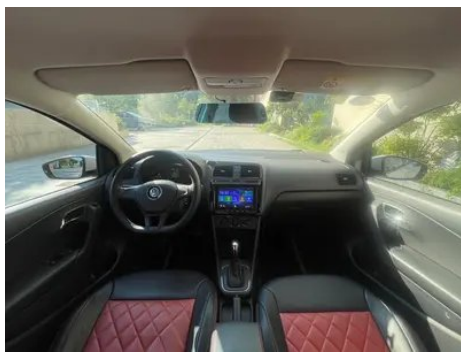
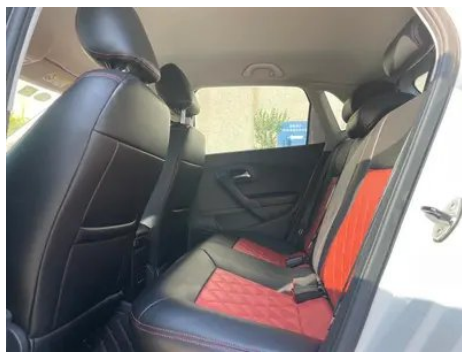
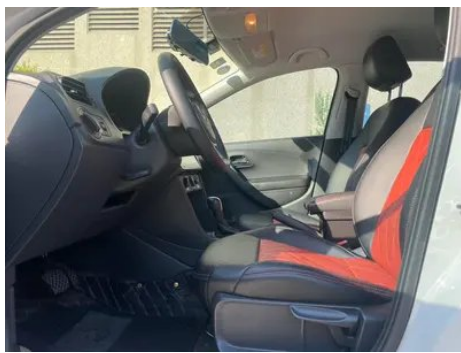
# Vehicle Detail Report

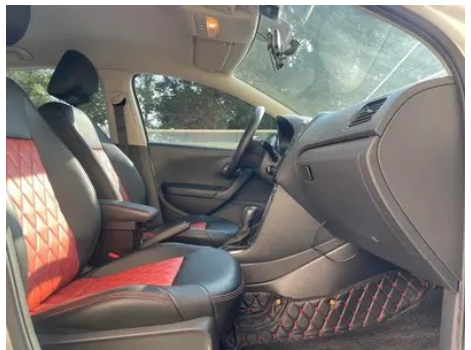
## Volkswagen Polo 2018 1.5L Automatic driving type

### Basic Information

Brand	Volkswagen
Mileage	81,000 km
Color	White
First Registration	2019-04-01
Transfer Count	1

### Vehicle Images





## Vehicle Condition

1. Right rocker panel, Paint repair, Outer-side body panel repair. 2. Driver's seat rails and frame, Signs of removal. 3. Front passenger seat rails and frame, Signs of removal. 4. Left rear quarter panel, Scrape, Paint repair, Body panel repair. 5. Right rear quarter panel, Deformation, Paint repair, Body panel repair.

## Configuration Information

### Model Information

<b>Model Name</b>	Volkswagen Polo 2018 1.5L Automatic driving type
<b>Launch Date</b>	2018.05

### Basic parameters

<b>Vehicle Class</b>	Small car
<b>Energy Type</b>	Gasoline

## Basic parameters (continued)

<b>Maximum Power (kW)</b>	81
<b>Maximum Torque (N·m)</b>	150
<b>Transmission</b>	6-gear Auto
<b>Body Type</b>	Hatchback
<b>Engine</b>	1.5L 110 horsepower L4
<b>Dimensions (L×W×H) (mm)</b>	3970*1682*1462
<b>Official 0-100 km/h Acceleration (s)</b>	12.2
<b>Top Speed (km/h)</b>	183
<b>Curb Weight (kg)</b>	1110
<b>Maximum Gross Weight (kg)</b>	-
<b>NEDC Combined Fuel Consumption (L/100km)</b>	5.7

## engine

<b>Engine Model</b>	DLX
<b>Displacement (mL)</b>	1498
<b>Displacement (L)</b>	1.5
<b>Induction Type</b>	Natural aspiration
<b>Cylinder Arrangement</b>	L
<b>Number of Cylinders</b>	4
<b>Valves per Cylinder</b>	4
<b>Valve Train</b>	DOHC
<b>Maximum Power (PS)</b>	110
<b>Max Power Speed (rpm)</b>	6000
<b>Max Torque Speed (rpm)</b>	3800
<b>Maximum net power (kW)</b>	-
<b>Fuel Grade</b>	92.
<b>Fuel Delivery System</b>	Multi-point EFI
<b>Cylinder Head Material</b>	Aluminum alloy
<b>Cylinder Block Material</b>	Aluminum alloy

## Screen/System

<b>Bluetooth/In-car Phone</b>	-
-------------------------------	---

## Body

## Body (continued)

<b>Length (mm)</b>	3970
<b>Width (mm)</b>	1682
<b>Height (mm)</b>	1462
<b>Wheelbase (mm)</b>	2470
<b>Front Track (mm)</b>	-
<b>Rear Track (mm)</b>	-
<b>Door Opening Type</b>	-
<b>Number of Doors</b>	5
<b>Number of Seats</b>	5
<b>Fuel Tank Capacity (L)</b>	45
<b>Trunk volume (L)</b>	250
<b>Drag Coefficient (Cd)</b>	-

## Gearbox

<b>Abbreviation</b>	6-gear Auto
<b>Number of Gears</b>	6
<b>Transmission Type</b>	Automatic Transmission (AT)

## Chassis steering

<b>Drive Type</b>	Front-engine, Front-wheel drive (FF)
<b>Front Suspension Type</b>	MacPherson independent suspension
<b>Rear Suspension Type</b>	Torsion beam non-independent suspension
<b>Power Steering Type</b>	Electric power assistance
<b>Vehicle structure</b>	bearing type

## Seat Configuration

<b>Seat Material</b>	<ul style="list-style-type: none"><li>Fabric</li></ul>
<b>Main seat adjustment</b>	<ul style="list-style-type: none"><li>Front and rear adjustment;</li><li>Backrest adjustment;</li><li>Height adjustment (2-way)</li></ul>
<b>Co-seat adjustment method</b>	<ul style="list-style-type: none"><li>Front and rear adjustment;</li><li>Backrest adjustment</li></ul>
<b>Electric adjustment of driver's seat and passenger seat</b>	-
<b>Front passenger seat rear adjustable buttons</b>	-
<b>Rear seat folding</b>	<ul style="list-style-type: none"><li>Overall down</li></ul>

## Seat Configuration (continued)

Front/rear center armrest	-
Rear cup holder	•

## Active safety

Anti-lock Braking System (ABS)	•
Electronic Brakeforce Distribution (EBD/CBC)	•
Brake Assist System (EBA/BAS/BA)	•
Traction Control System (ASR/TCS/TRC)	•
Electronic Stability Control (ESC/ESP/DSC)	•
Tire Pressure Monitoring System (TPMS)	• Tire pressure alarm
Seat Belt Reminder	• Front row
ISOFIX Child Seat Anchors	•
Lane Departure Warning System (LDWS)	-
Autonomous Emergency Braking (AEB)	-
Driver Fatigue Detection	-

## Air conditioning/refrigerator

Air conditioning temperature control method	• Manual air conditioning
Rear Independent Climate Control	-
Rear seat air vents	-
Temperature zone control	-
Car air purifier	-
In-cabin PM2.5 Filter	-

## Passive safety

Driver/passenger airbag	Main •/Deputy •
Front/rear side airbags	-
Front/rear head airbags (curtain airbags)	-

## Wheel brake

Front Brake Type	Ventilation disc
------------------	------------------

## Wheel brake (continued)

<b>Rear Brake Type</b>	Drum type
<b>Parking brake type</b>	handbrake
<b>Front Tire Size</b>	185/65 R14
<b>Rear Tire Size</b>	185/65 R14
<b>Spare Tire Size</b>	Not full-size

## Audio/Interior Lighting

<b>Number of speakers</b>	• 4 speakers
---------------------------	--------------

## Driving functions

<b>Navigation traffic information display</b>	-
<b>Lane assist</b>	-
<b>Lane Keeping Assist System</b>	-
<b>Satellite navigation system</b>	-
<b>Parking Assist</b>	-

## Exterior lighting

<b>Low beam light source</b>	• Halogen
<b>High beam light source</b>	• Halogen
<b>LED daytime running lights</b>	-
<b>Adaptive high and low beam</b>	-
<b>Automatic headlights</b>	-
<b>Height-adjustable headlights</b>	•
<b>Headlight Delay Off</b>	-

## Exterior mirrors

<b>Exterior mirror function</b>	• Electric adjustment; • Mirror heating
---------------------------------	---

## Appearance/anti-theft

<b>Rim material</b>	• Steel
<b>Electronic engine immobilizer</b>	•
<b>Central locking system in the car</b>	•
<b>Key Type</b>	• Remote key
<b>Keyless start system</b>	-

## Skylight/Glass

<b>Front/rear electric windows</b>	Front •/Rear •
<b>One-touch window lifting function</b>	• Full vehicle
<b>Window anti-pinch function</b>	•
<b>Car makeup mirror</b>	• COPILOT
<b>Rear wiper</b>	•

## Interior and exterior color

<b>Exterior Color</b>	Polar White:#FFFFFF; Style red:#A50E15; Streamer green:#389619; Sharp silver:#9AA8B3; Star shine yellow:#E9D804
<b>Interior Color</b>	Black:#000000

## Steering wheel/interior mirror

<b>Steering Wheel Material</b>	• Plastic
<b>Steering wheel position adjustment</b>	• Manual up and down adjustment
<b>Multi-function steering wheel</b>	-
<b>Heated Steering Wheel</b>	-
<b>Steering wheel memory</b>	-
<b>Full LCD instrument panel</b>	-
<b>Interior rearview mirror function</b>	• Manual anti-glare

## Intelligent configuration

<b>Connected Car Services</b>	-
<b>OTA Updates</b>	-

## Driving Control

<b>Driving mode switch</b>	• Movement
<b>Automatic parking</b>	-
<b>Engine start-stop technology</b>	•

## Driving Hardware

<b>Front/rear parking radar</b>	-
---------------------------------	---

## In-car charging

<b>Multimedia/charging port</b>	•USB;•AUX;•SD
---------------------------------	---------------

## In-car charging (continued)

<b>Number of USB/Type-C ports</b>	• 1 in the front row
-----------------------------------	----------------------

---

"●" = Standard equipment

"\_" = Not available

"○" = Optional equipment.

Note: These are Chinese market vehicles. Warranty coverage is not available outside of China.