

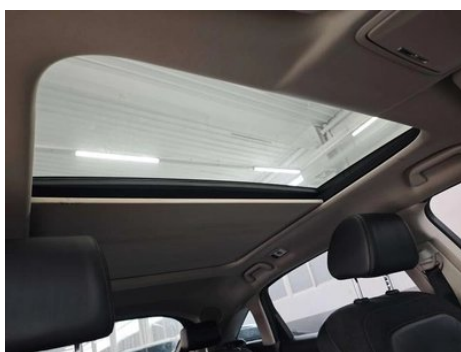
Vehicle Detail Report

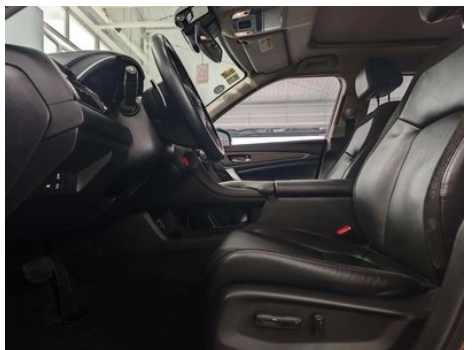
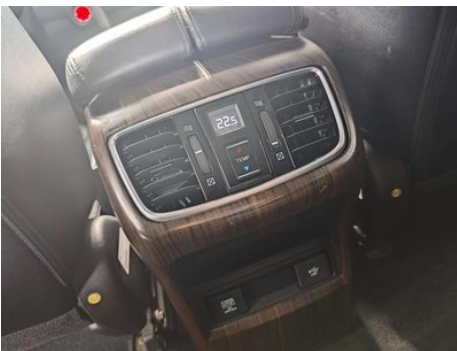
Honda Crown Road 2017 370TURBO Four-wheel drive exclusive edition

Basic Information

Brand	Honda
Mileage	57,600 km
Color	Yellow
First Registration	2019-01-01
Transfer Count	0

Vehicle Images







Vehicle Condition

1. Right rear quarter panel, Paint repair, Body panel repair.

Configuration Information

Model Information

Model Name	Guandao 2017 370TURBO Four-Wheel Drive Prestige Edition
Launch Date	2016.10

Basic parameters

Vehicle Class	Mid-size SUV
Energy Type	Gasoline
Maximum Power (kW)	200
Maximum Torque (N·m)	370
Transmission	9-gear manual integration
Body Type	SUV
Engine	2.0T 272 horsepower L4
Dimensions (L×W×H) (mm)	4816*1942*1669
Official 0-100 km/h Acceleration (s)	8
Top Speed (km/h)	208
Curb Weight (kg)	1866
Maximum Gross Weight (kg)	-
NEDC Combined Fuel Consumption (L/100km)	8.5

engine

Engine Model	K20C3
Displacement (mL)	1996
Displacement (L)	2.0
Induction Type	Turbocharging
Cylinder Arrangement	L

engine (continued)

Number of Cylinders	4
Valves per Cylinder	4
Compression Ratio	9.8
Valve Train	DOHC
Bore (mm)	86
Stroke (mm)	85.9
Maximum Power (PS)	272
Max Power Speed (rpm)	6500
Max Torque Speed (rpm)	2250-4500
Maximum net power (kW)	-
Fuel Grade	92.
Fuel Delivery System	Direct injection
Cylinder Head Material	Aluminum alloy
Cylinder Block Material	Aluminum alloy
Engine-specific technologies	VTEC

Screen/System

Central control color screen	<ul style="list-style-type: none">• Touch LCD screen
Infotainment Screen Size	<ul style="list-style-type: none">• 8 inches
Bluetooth/In-car Phone	<ul style="list-style-type: none">•
Smartphone Integration/Mirroring	<ul style="list-style-type: none">• Original interconnection/mapping
Voice recognition control system	<ul style="list-style-type: none">• Telephone

Body

Length (mm)	4816
Width (mm)	1942
Height (mm)	1669
Wheelbase (mm)	2820
Front Track (mm)	-
Rear Track (mm)	-
Door Opening Type	-
Number of Doors	5
Number of Seats	5

Body (continued)

Fuel Tank Capacity (L)	57
Trunk volume (L)	510
Drag Coefficient (Cd)	-

Gearbox

Abbreviation	9-gear manual integration
Number of Gears	9
Transmission Type	Automatic Transmission with Manual Mode (AT)

Chassis steering

Drive Type	Front-engine, All-wheel drive (F-AWD)
Four-wheel drive	Timely four-wheel drive
Central differential structure	Multi-plate clutch
Front Suspension Type	MacPherson independent suspension
Rear Suspension Type	Multi-link independent suspension
Power Steering Type	Electric power assistance
Vehicle structure	bearing type

Seat Configuration

Seat Material	• Leather
Main seat adjustment	• Front and rear adjustment; • Backrest adjustment; • Height adjustment (4-way)
Co-seat adjustment method	• Front and rear adjustment; • Backrest adjustment; • Height adjustment (2-way)
Electric adjustment of driver's seat and passenger seat	Main •/Deputy •
Front seat functions	• Heating
Front passenger seat rear adjustable buttons	-
Rear seat folding	• Proportional down
Front/rear center armrest	Front •/Rear •
Rear cup holder	•

Active safety

Anti-lock Braking System (ABS)	•
---------------------------------------	---

Active safety (continued)

Electronic Brakeforce Distribution (EBD/CBC)	•
Brake Assist System (EBA/BAS/BA)	•
Traction Control System (ASR/TCS/TRC)	•
Electronic Stability Control (ESC/ESP/DSC)	•
Tire Pressure Monitoring System (TPMS)	• Tire pressure alarm
Seat Belt Reminder	• Front row
ISOFIX Child Seat Anchors	•
Lane Departure Warning System (LDWS)	-
Autonomous Emergency Braking (AEB)	-
Driver Fatigue Detection	-
Emergency Call System (eCall)	•

Air conditioning/refrigerator

Air conditioning temperature control method	• Automatic air conditioning
Rear Independent Climate Control	•
Rear seat air vents	•
Temperature zone control	•
Car air purifier	-
In-cabin PM2.5 Filter	-

Passive safety

Driver/passenger airbag	Main •/Deputy •
Front/rear side airbags	Front •/Rear-
Front/rear head airbags (curtain airbags)	Front •/Rear •

Wheel brake

Front Brake Type	Ventilation disc
Rear Brake Type	Disc
Parking brake type	Electronic Parking
Front Tire Size	245/55 R19

Wheel brake (continued)

Rear Tire Size	245/55 R19
Spare Tire Size	Not full-size

Audio/Interior Lighting

Number of speakers	• 12 speakers
Interior ambient lighting	• Monochrome

Driving functions

Navigation traffic information display	•
Lane assist	-
Lane Keeping Assist System	-
Cruise control system	• Cruise control
Satellite navigation system	•
Parking Assist	-

Exterior lighting

Low beam light source	•LED
High beam light source	•LED
LED daytime running lights	•
Adaptive high and low beam	-
Automatic headlights	-
Front fog lights	•LED
Height-adjustable headlights	•
Headlight Delay Off	•
Turn signal lamp	•

Exterior mirrors

Exterior mirror function	• Electric adjustment; • Electric folding; • Mirror heating
---------------------------------	---

Appearance/anti-theft

Rim material	• Aluminum alloy
Electric trunk	•
Electronic engine immobilizer	•
Central locking system in the car	•

Appearance/anti-theft (continued)

Key Type	<ul style="list-style-type: none">• Remote key
Keyless start system	<ul style="list-style-type: none">•
Keyless entry function	<ul style="list-style-type: none">• Front row
Electric trunk position memory	<ul style="list-style-type: none">•
Roof rack	<ul style="list-style-type: none">•
Remote start function	<ul style="list-style-type: none">•

Skylight/Glass

Sunroof Type	<ul style="list-style-type: none">• Openable panoramic sunroof
Front/rear electric windows	Front •/Rear •
One-touch window lifting function	<ul style="list-style-type: none">• Full car
Window anti-pinch function	<ul style="list-style-type: none">•
Car makeup mirror	<ul style="list-style-type: none">• Main driver's lamp;• co-pilot's lamp
Rear wiper	<ul style="list-style-type: none">•
Side window multi-layer soundproof glass	<ul style="list-style-type: none">• Full car

Interior and exterior color

Exterior Color	Desert gold:#B17436; Offt black:#010101; Gaub red:#733331; Amber gold:#994600; Pearl white:#ECEFF4; Star and moon white:#EFEFEE
Interior Color	Black:#000000; Black/Brown:#000000/#7C3D22

Steering wheel/interior mirror

Steering Wheel Material	<ul style="list-style-type: none">• Leather
Steering wheel position adjustment	<ul style="list-style-type: none">• Manual up and down front and rear adjustment
Multi-function steering wheel	<ul style="list-style-type: none">•
Heated Steering Wheel	-
Steering wheel memory	-
Trip computer display screen	<ul style="list-style-type: none">• Color
Full LCD instrument panel	-

Steering wheel/interior mirror (continued)

Interior rearview mirror function	• Automatic anti-glare
Steering Wheel Shift Paddles	•

Intelligent configuration

Connected Car Services	•
OTA Updates	-
Active Noise Cancellation	•

Driving Control

Driving mode switch	• Sport; • Economy; • Standard/Comfort; • Snow
Automatic parking	•
Hill start assist	•
Variable suspension function	• Soft and hard adjustment of suspension
Variable steering ratio	•
Engine start-stop technology	•

Driving Hardware

Front/rear parking radar	Front-/Rear •
Driving Assistance Camera System	• Reversing image; • Vehicle side blind area image

In-car charging

Multimedia/charging port	•USB;•HDMI
Number of USB/Type-C ports	• 1 front row/1 back row

"●" = Standard equipment

"-" = Not available

"○" = Optional equipment.

Note: These are Chinese market vehicles. Warranty coverage is not available outside of China.