

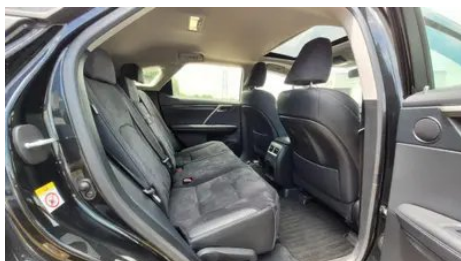
Vehicle Detail Report

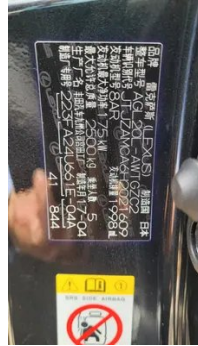
Lexus RX 2016 300 Two-wheel drive elite
version China V

Basic Information

Brand	Lexus
Mileage	62,000 km
Color	Black
First Registration	2017-04-01
Transfer Count	0

Vehicle Images





Vehicle Condition

1. Heavy wear. 2. Hood, Paint repair. 3. Left front door, Paint repair. 4. Left rear door, Body panel repair. 5. Right rear door, Paint repair. 6. Left front fender, Replaced.

Configuration Information

Model Information

Model Name	Lexus RX 2016 300 Two-wheel drive elite version country V
Launch Date	2015.11

Basic parameters

Vehicle Class	Mid-size and large SUVs
Energy Type	Gasoline
Maximum Power (kW)	175

Basic parameters (continued)

Maximum Torque (N·m)	350
Transmission	6-speed manual integration
Body Type	SUV
Engine	2.0T 238 horsepower L4
Dimensions (L×W×H) (mm)	4890*1895*1690
Official 0-100 km/h Acceleration (s)	9.2
Top Speed (km/h)	200
Curb Weight (kg)	1945
Maximum Gross Weight (kg)	-
NEDC Combined Fuel Consumption (L/100km)	8.6

engine

Engine Model	8AR-FTS
Displacement (mL)	1998
Displacement (L)	2.0
Induction Type	Turbocharging
Cylinder Arrangement	L
Number of Cylinders	4
Valves per Cylinder	4
Compression Ratio	10
Valve Train	DOHC
Bore (mm)	86
Stroke (mm)	86
Maximum Power (PS)	238
Max Power Speed (rpm)	4800-5600
Max Torque Speed (rpm)	1650-4000
Maximum net power (kW)	-
Fuel Grade	95.
Fuel Delivery System	Mixed injection
Cylinder Head Material	Aluminum alloy
Cylinder Block Material	Aluminum alloy
Engine layout	Horizontal

engine (continued)

Engine-specific technologies	Double VVT-iW
-------------------------------------	---------------

Screen/System

Central control color screen	<ul style="list-style-type: none">• Ordinary LCD screen
Infotainment Screen Size	<ul style="list-style-type: none">• 8 inches
Bluetooth/In-car Phone	<ul style="list-style-type: none">•
Voice recognition control system	<ul style="list-style-type: none">• Telephone
In-car CD/DVD Player	<ul style="list-style-type: none">• Single disc CD

Body

Length (mm)	4890
Width (mm)	1895
Height (mm)	1690
Wheelbase (mm)	2790
Front Track (mm)	1640
Rear Track (mm)	1640
Door Opening Type	-
Number of Doors	5
Number of Seats	5
Fuel Tank Capacity (L)	72
Trunk volume (L)	506-1579
Drag Coefficient (Cd)	-

Gearbox

Abbreviation	6-speed manual integration
Number of Gears	6
Transmission Type	Automatic Transmission with Manual Mode (AT)

Chassis steering

Drive Type	Front-engine, Front-wheel drive (FF)
Front Suspension Type	MacPherson independent suspension
Rear Suspension Type	Double wishbone independent suspension
Power Steering Type	Electric power assistance
Vehicle structure	bearing type

Seat Configuration

Seat Configuration (continued)

Seat Material	• Fabric
Main seat adjustment	• Front and rear adjustment; • Backrest adjustment; • Height adjustment (4-way); • Lumbar support (2-way)
Co-seat adjustment method	• Front and rear adjustment; • Backrest adjustment; • Height adjustment (4-way); • Lumbar support (2-way)
Electric adjustment of driver's seat and passenger seat	Main •/Deputy •
Front passenger seat rear adjustable buttons	-
Second row seat adjustment	• Front and rear adjustment; • Backrest adjustment
Rear seat folding	• Proportional down
Front/rear center armrest	Front •/Rear •
Rear cup holder	•

Active safety

Anti-lock Braking System (ABS)	•
Electronic Brakeforce Distribution (EBD/CBC)	•
Brake Assist System (EBA/BAS/BA)	•
Traction Control System (ASR/TCS/TRC)	•
Electronic Stability Control (ESC/ESP/DSC)	•
Tire Pressure Monitoring System (TPMS)	• Tire pressure display
Seat Belt Reminder	• Front row
ISOFIX Child Seat Anchors	•
Lane Departure Warning System (LDWS)	-
Autonomous Emergency Braking (AEB)	-
Driver Fatigue Detection	-

Air conditioning/refrigerator

Air conditioning/refrigerator (continued)

Air conditioning temperature control method	• Automatic air conditioning
Rear Independent Climate Control	-
Rear seat air vents	•
Temperature zone control	•
Car air purifier	-
In-cabin PM2.5 Filter	•
Negative ion generator	•

Passive safety

Driver/passenger airbag	Main •/Deputy •
Front/rear side airbags	Front •/Rear •
Front/rear head airbags (curtain airbags)	Front •/Rear •
Knee airbag	• Main driver knee airbag

Wheel brake

Front Brake Type	Ventilation disc
Rear Brake Type	Ventilation disc
Parking brake type	Electronic Parking
Front Tire Size	235/65 R18
Rear Tire Size	235/65 R18
Spare Tire Size	Not full-size

Audio/Interior Lighting

Number of speakers	• 9 speakers
Touch reading light	•

Driving functions

Navigation traffic information display	-
Lane assist	-
Lane Keeping Assist System	-
Cruise control system	• Cruise control
Satellite navigation system	-
Parking Assist	-

Exterior lighting

Exterior lighting (continued)

Low beam light source	•LED
High beam light source	•LED
LED daytime running lights	•
Adaptive high and low beam	-
Automatic headlights	•
Front fog lights	•LED
Height-adjustable headlights	•
Headlight Delay Off	•
Headlight cleaning device	•

Exterior mirrors

Exterior mirror function	•Electric adjustment; •Electric folding; •Rearview mirror heating; •Automatically turn down when reversing; •Automatically fold when locking the car
---------------------------------	--

Appearance/anti-theft

Rim material	• Aluminum alloy
Electric trunk	-
Electronic engine immobilizer	•
Central locking system in the car	•
Key Type	• Remote key
Keyless start system	•
Keyless entry function	• Full car
Roof rack	•

Skylight/Glass

Sunroof Type	• Electric sunroof
Front/rear electric windows	Front •/Rear •
One-touch window lifting function	• Full car
Window anti-pinch function	•
Car makeup mirror	• Main driver's lamp; • co-pilot's lamp

Skylight/Glass (continued)

Rear wiper	<ul style="list-style-type: none">•
Rain sensor wiper function	<ul style="list-style-type: none">• Rainfall-sensing
Side window multi-layer soundproof glass	<ul style="list-style-type: none">• Front row

Interior and exterior color

Exterior Color	Supersonic Shi Ying White:#EEEEEE; Platinum gray:#CDD3D5; Sapphire blue:#323E96; Supersonic titanium silver:#9C9B97; Black:#000000; Amber:#3B0D0C; Wine red:#851A2B; Bright brown:#ACACA0; To black:#000000
Interior Color	Black:#000000; Black/Earl Brown:#000000/#2A2522; Brown/Chun White:#4A393F/#E0DDC9; Black/Citrine Brown:#000000/#916957; Black/Ivory:#000000/#DDC9A5

Steering wheel/interior mirror

Steering Wheel Material	<ul style="list-style-type: none">• Leather
Steering wheel position adjustment	<ul style="list-style-type: none">• Electric up and down front and rear adjustment
Multi-function steering wheel	<ul style="list-style-type: none">•
Heated Steering Wheel	-
Steering wheel memory	-
Trip computer display screen	<ul style="list-style-type: none">• Color
Full LCD instrument panel	-
Interior rearview mirror function	<ul style="list-style-type: none">• Automatic anti-glare

Intelligent configuration

Connected Car Services	-
OTA Updates	-

Driving Control

Driving mode switch	<ul style="list-style-type: none">• Sport; • Economy; • Standard/Comfort
Automatic parking	<ul style="list-style-type: none">•
Hill start assist	<ul style="list-style-type: none">•

Driving Control (continued)

Engine start-stop technology	•
-------------------------------------	---

Driving Hardware

Front/rear parking radar	Front •/Rear •
Driving Assistance Camera System	• Reversing image

In-car charging

Multimedia/charging port	•USB;•AUX
Number of USB/Type-C ports	• 2 in the front row
Luggage compartment 12V power socket	•

"●" = Standard equipment

"_" = Not available

"○" = Optional equipment.

Note: These are Chinese market vehicles. Warranty coverage is not available outside of China.