

Vehicle Detail Report

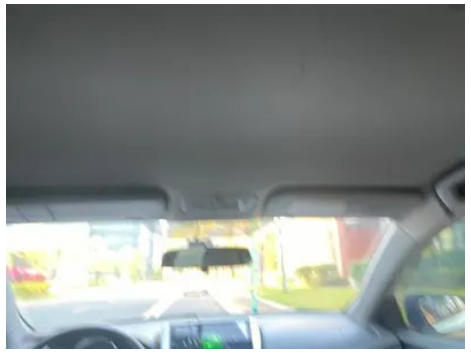
Toyota Vios FS 2017 1.5L CVT Feng Chi Edition

Basic Information

Brand	Toyota
Mileage	84,000 km
Color	White
First Registration	2017-09-01
Transfer Count	1

Vehicle Images





Vehicle Condition

1. Right rear door, Body panel repair.
2. Right front fender, Body panel repair.
3. Left rear quarter panel, Paint repair.

Configuration Information

Model Information

Model Name	Toyota Vios FS 2017 1.5L CVT Feng Chi Edition
Launch Date	2017.03

Basic parameters

Vehicle Class	Small car
Energy Type	Gasoline
Maximum Power (kW)	79
Maximum Torque (N·m)	140
Transmission	CVT continuously variable transmission
Body Type	Hatchback
Engine	1.5L 107 horsepower L4
Dimensions (L×W×H) (mm)	4140*1700*1495
Official 0-100 km/h Acceleration (s)	-
Top Speed (km/h)	170
Curb Weight (kg)	1100
Maximum Gross Weight (kg)	-
NEDC Combined Fuel Consumption (L/100km)	5.4

engine

Engine Model	5NR-FE
Displacement (mL)	1496
Displacement (L)	1.5
Induction Type	Natural aspiration

engine (continued)

Cylinder Arrangement	L
Number of Cylinders	4
Valves per Cylinder	4
Compression Ratio	11.5
Valve Train	DOHC
Bore (mm)	72.5
Stroke (mm)	90.6
Maximum Power (PS)	107
Max Power Speed (rpm)	6000
Max Torque Speed (rpm)	4200
Maximum net power (kW)	-
Fuel Grade	92.
Fuel Delivery System	Multi-point EFI
Cylinder Head Material	Aluminum alloy
Cylinder Block Material	Aluminum alloy
Engine-specific technologies	Double VVT-i

Screen/System

Bluetooth/In-car Phone	-
-------------------------------	---

Body

Length (mm)	4140
Width (mm)	1700
Height (mm)	1495
Wheelbase (mm)	2550
Front Track (mm)	1460
Rear Track (mm)	1460
Door Opening Type	-
Number of Doors	5
Number of Seats	5
Fuel Tank Capacity (L)	42
Trunk volume (L)	-
Drag Coefficient (Cd)	-

Gearbox

Abbreviation	CVT continuously variable transmission
---------------------	--

Gearbox (continued)

Number of Gears	stepless speed change
Transmission Type	Continuously Variable Transmission (CVT)

Chassis steering

Drive Type	Front-engine, Front-wheel drive (FF)
Front Suspension Type	MacPherson independent suspension
Rear Suspension Type	Torsion beam non-independent suspension
Power Steering Type	Electric power assistance
Vehicle structure	bearing type

Seat Configuration

Seat Material	<ul style="list-style-type: none">• Fabric
Main seat adjustment	<ul style="list-style-type: none">• Front and rear adjustment;• Backrest adjustment;• Height adjustment (2-way)
Co-seat adjustment method	<ul style="list-style-type: none">• Front and rear adjustment;• Backrest adjustment
Electric adjustment of driver's seat and passenger seat	-
Front passenger seat rear adjustable buttons	-
Rear seat folding	<ul style="list-style-type: none">• Proportional down
Front/rear center armrest	-
Rear cup holder	-

Active safety

Anti-lock Braking System (ABS)	<ul style="list-style-type: none">•
Electronic Brakeforce Distribution (EBD/CBC)	<ul style="list-style-type: none">•
Brake Assist System (EBA/BAS/BA)	<ul style="list-style-type: none">•
Traction Control System (ASR/TCS/TRC)	<ul style="list-style-type: none">•
Electronic Stability Control (ESC/ESP/DSC)	<ul style="list-style-type: none">•
Seat Belt Reminder	<ul style="list-style-type: none">• Front row
ISOFIX Child Seat Anchors	<ul style="list-style-type: none">•

Active safety (continued)

Lane Departure Warning System (LDWS)	-
Autonomous Emergency Braking (AEB)	-
Driver Fatigue Detection	-

Air conditioning/refrigerator

Air conditioning temperature control method	• Manual air conditioning
Rear Independent Climate Control	-
Rear seat air vents	-
Temperature zone control	-
Car air purifier	-
In-cabin PM2.5 Filter	-

Passive safety

Driver/passenger airbag	Main •/Deputy •
Front/rear side airbags	-
Front/rear head airbags (curtain airbags)	-

Wheel brake

Front Brake Type	Ventilation disc
Rear Brake Type	Drum type
Parking brake type	handbrake
Front Tire Size	185/60 R15
Rear Tire Size	185/60 R15
Spare Tire Size	Not full-size

Audio/Interior Lighting

Number of speakers	• 2 Horns
---------------------------	-----------

Driving functions

Navigation traffic information display	-
Lane assist	-
Lane Keeping Assist System	-
Satellite navigation system	-
Parking Assist	-

Exterior lighting

Low beam light source	• Halogen
High beam light source	• Halogen
LED daytime running lights	-
Adaptive high and low beam	-
Automatic headlights	-
Height-adjustable headlights	•
Headlight Delay Off	-

Exterior mirrors

Exterior mirror function	• Electric adjustment
---------------------------------	-----------------------

Appearance/anti-theft

Rim material	• Steel
Central locking system in the car	•
Key Type	• Remote key
Keyless start system	-

Skylight/Glass

Front/rear electric windows	Front •/Rear •
Window anti-pinch function	-
Rear wiper	•

Interior and exterior color

Exterior Color	Aurora White #FFFFFF Flame Red Metallic #C4283E quicksand rice metallic #CFC26F water bright silver #BABABA sandalwood purple #642B60 Interstellar Blue #0042BA Pearl Black #000000
Interior Color	Black:#3E4146; Black/Beige:#3E4146/#C9A782

Steering wheel/interior mirror

Steering Wheel Material	• Plastic
Steering wheel position adjustment	• Manual up and down adjustment
Multi-function steering wheel	-
Heated Steering Wheel	-

Steering wheel/interior mirror (continued)

Steering wheel memory	-
Full LCD instrument panel	-
Interior rearview mirror function	• Manual anti-glare

Intelligent configuration

Connected Car Services	-
OTA Updates	-

Driving Control

Automatic parking	-
Hill start assist	•
Engine start-stop technology	•

Driving Hardware

Front/rear parking radar	-
---------------------------------	---

In-car charging

Multimedia/charging port	•USB;•AUX
Number of USB/Type-C ports	• 1 in the front row

"●" = Standard equipment

"-" = Not available

"○" = Optional equipment.

Note: These are Chinese market vehicles. Warranty coverage is not available outside of China.