

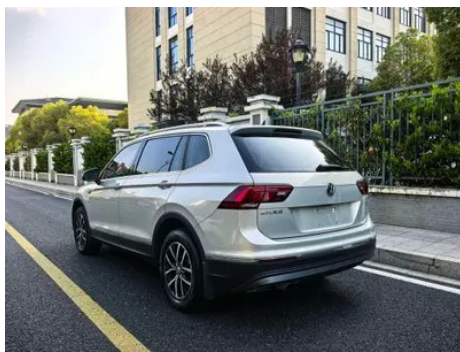
Vehicle Detail Report

Volkswagen Tiguan L 2018 Restyling 330TSI Automatic Two-Drive Deluxe Edition

Basic Information

Brand	Volkswagen
Mileage	81,000 km
Color	Silver-gray
First Registration	2019-01-01
Transfer Count	1

Vehicle Images





Vehicle Condition

1. Radiator support, Signs of removal, Replaced. 2. Spare wheel well, Water stains, Soiling. 3. Right rear quarter panel, Paint repair, Body panel repair.

Configuration Information

Model Information

Model Information (continued)

Model Name	Tiguan L 2018 Restyling 330TSI Automatic Two-Drive Deluxe Edition
Launch Date	2018.08

Basic parameters

Vehicle Class	Mid-size SUV
Energy Type	Gasoline
Maximum Power (kW)	137
Maximum Torque (N·m)	320
Transmission	7-speed wet dual-clutch
Body Type	SUV
Engine	2.0T 186 horsepower L4
Dimensions (L×W×H) (mm)	4712*1839*1673
Official 0-100 km/h Acceleration (s)	8.8
Top Speed (km/h)	-
Curb Weight (kg)	1615
Maximum Gross Weight (kg)	-
NEDC Combined Fuel Consumption (L/100km)	6.6

engine

Engine Model	EA888-DBF
Displacement (mL)	1984
Displacement (L)	2.0
Induction Type	Turbocharging
Cylinder Arrangement	L
Number of Cylinders	4
Valves per Cylinder	4
Valve Train	DOHC
Maximum Power (PS)	186
Max Power Speed (rpm)	4100-6000
Max Torque Speed (rpm)	1500-4000
Maximum net power (kW)	-
Fuel Grade	95.
Fuel Delivery System	Mixed injection

engine (continued)

Cylinder Head Material	Aluminum alloy
Cylinder Block Material	Cast iron

Screen/System

Central control color screen	<ul style="list-style-type: none">• Touch LCD screen
Infotainment Screen Size	<ul style="list-style-type: none">• 8 inches
Bluetooth/In-car Phone	<ul style="list-style-type: none">•
Smartphone Integration/Mirroring	<ul style="list-style-type: none">• Support CarPlay;• Support CarLife;• Factory interconnection/mapping
Voice recognition control system	<ul style="list-style-type: none">• Multimedia system;• Navigation;• Telephone

Body

Length (mm)	4712
Width (mm)	1839
Height (mm)	1673
Wheelbase (mm)	2791
Front Track (mm)	-
Rear Track (mm)	-
Door Opening Type	-
Number of Doors	5
Number of Seats	5
Fuel Tank Capacity (L)	58
Trunk volume (L)	495-1780
Drag Coefficient (Cd)	-

Gearbox

Abbreviation	7-speed wet dual-clutch
Number of Gears	7
Transmission Type	Wet Dual-Clutch Transmission (DCT)

Chassis steering

Drive Type	Front-engine, Front-wheel drive (FF)
Front Suspension Type	MacPherson independent suspension
Rear Suspension Type	Multi-link independent suspension
Power Steering Type	Electric power assistance
Vehicle structure	bearing type

Seat Configuration

Seat Material	• Leather
Main seat adjustment	• Front and rear adjustment; • Backrest adjustment; • Height adjustment (4-way); • Lumbar support (4-way)
Co-seat adjustment method	• Front and rear adjustment; • Backrest adjustment; • Height adjustment (4-way); • Lumbar support (4-way)
Electric adjustment of driver's seat and passenger seat	Main •/Deputy •
Front seat functions	• Heating
Front passenger seat rear adjustable buttons	-
Second row seat adjustment	• Backrest adjustment
Rear seat folding	• Proportional down
Front/rear center armrest	Front •/Rear •
Rear cup holder	•

Active safety

Anti-lock Braking System (ABS)	•
Electronic Brakeforce Distribution (EBD/CBC)	•
Brake Assist System (EBA/BAS/BA)	•
Traction Control System (ASR/TCS/TRC)	•
Electronic Stability Control (ESC/ESP/DSC)	•
Tire Pressure Monitoring System (TPMS)	• Tire pressure alarm
Seat Belt Reminder	• Front row
ISOFIX Child Seat Anchors	•
Lane Departure Warning System (LDWS)	-
Autonomous Emergency Braking (AEB)	-
Driver Fatigue Detection	-

Air conditioning/refrigerator

Air conditioning/refrigerator (continued)

Air conditioning temperature control method	• Automatic air conditioning
Rear Independent Climate Control	•
Rear seat air vents	•
Temperature zone control	•
Car air purifier	-
In-cabin PM2.5 Filter	•

Passive safety

Driver/passenger airbag	Main •/Deputy •
Front/rear side airbags	Front •/Rear-
Front/rear head airbags (curtain airbags)	Front •/Rear •

Wheel brake

Front Brake Type	Ventilation disc
Rear Brake Type	Disc
Parking brake type	Electronic Parking
Front Tire Size	215/65 R17
Rear Tire Size	215/65 R17
Spare Tire Size	Not full-size

Audio/Interior Lighting

Number of speakers	• 8 speakers
Interior ambient lighting	•

Driving functions

Navigation traffic information display	-
Lane assist	-
Lane Keeping Assist System	-
Cruise control system	• Cruise control
Satellite navigation system	•
Parking Assist	-

Exterior lighting

Low beam light source	• Xenon
High beam light source	• Xenon

Exterior lighting (continued)

LED daytime running lights	-
Adaptive high and low beam	-
Automatic headlights	•
Front fog lights	• Halogen
Height-adjustable headlights	•
Headlight Delay Off	•
Turn signal lamp	•

Exterior mirrors

Exterior mirror function	• Electric adjustment; • Electric folding; • Rearview mirror heating; • Automatic folding when locked
---------------------------------	---

Appearance/anti-theft

Rim material	• Aluminum alloy
Electric trunk	○
Electronic engine immobilizer	•
Central locking system in the car	•
Key Type	• Remote key
Keyless start system	•
Keyless entry function	• Front row
Hands-free Trunk	○
Roof rack	•

Skylight/Glass

Sunroof Type	• Openable panoramic sunroof
Front/rear electric windows	Front •/Rear •
One-touch window lifting function	• Full car
Window anti-pinch function	•
Car makeup mirror	• Main driver's lamp; • co-pilot's lamp
Rear wiper	•
Rain sensor wiper function	• Rainfall-sensing

Interior and exterior color

Exterior Color	Aurora White:#FFFFFF; Icelandic Silver:#9CABB2; Junling Brown:#644336; Samba orange:#CA3E24; Tianmo Gold:#AA953D; Basaltic Black:#000000
Interior Color	Black/TAG Heuer Brown:#000000/#C65C35; Cool elegant black:#000000

Steering wheel/interior mirror

Steering Wheel Material	<ul style="list-style-type: none">• Leather
Steering wheel position adjustment	<ul style="list-style-type: none">• Manual up and down front and rear adjustment
Multi-function steering wheel	<ul style="list-style-type: none">•
Heated Steering Wheel	<ul style="list-style-type: none">•
Steering wheel memory	-
Trip computer display screen	<ul style="list-style-type: none">• Color
Full LCD instrument panel	-
Interior rearview mirror function	<ul style="list-style-type: none">• Automatic anti-glare
Steering Wheel Shift Paddles	<ul style="list-style-type: none">•

Intelligent configuration

Connected Car Services	-
OTA Updates	-

Driving Control

Driving mode switch	<ul style="list-style-type: none">• Movement
Automatic parking	<ul style="list-style-type: none">•
Hill start assist	<ul style="list-style-type: none">•
Engine start-stop technology	<ul style="list-style-type: none">•

Driving Hardware

Front/rear parking radar	Front-/Rear •
Driving Assistance Camera System	<ul style="list-style-type: none">• Reversing image

In-car charging

Multimedia/charging port	<ul style="list-style-type: none">•USB;•AUX;•SD
---------------------------------	---

In-car charging (continued)

Number of USB/Type-C ports	• 1 in the front row/2 in the back row
Luggage compartment 12V power socket	•

"●" = Standard equipment

"_" = Not available

"○" = Optional equipment.

Note: These are Chinese market vehicles. Warranty coverage is not available outside of China.