

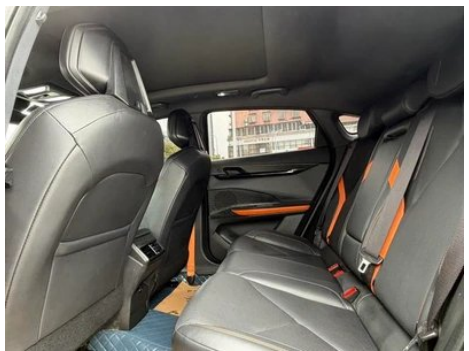
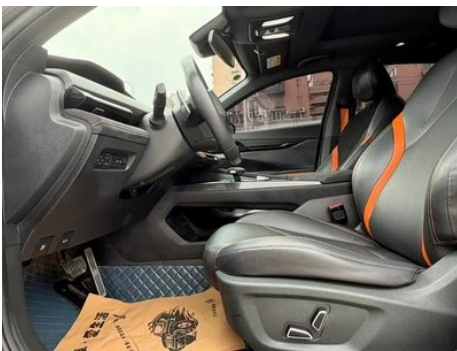
Vehicle Detail Report

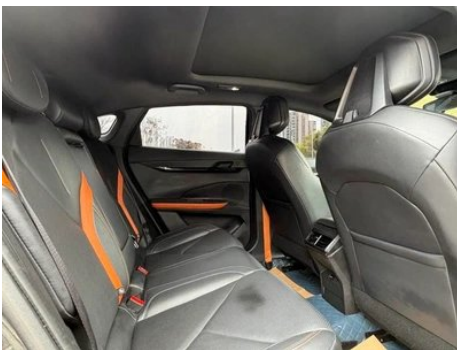
Changan UNI-V 2023 1.5T Sports version

Basic Information

Brand	Changan
Mileage	38,000 km
Color	Dark gray
First Registration	2023-03-01
Transfer Count	0

Vehicle Images





Vehicle Condition

1. Left rear fender, Bodywork repair. 2. Right rear fender, Bodywork repair.

Configuration Information

Model Information

Model Name	Changan UNI-V 2023 1.5T Sports version
-------------------	--

Model Information (continued)

Launch Date	2023.04
-------------	---------

Basic parameters

Vehicle Class	compact car
Energy Type	Gasoline
Maximum Power (kW)	138
Maximum Torque (N·m)	300
Transmission	7-speed wet dual-clutch
Body Type	Liftback
Engine	1.5T 188 horsepower L4
Dimensions (L×W×H) (mm)	4695*1838*1430
Official 0-100 km/h Acceleration (s)	-
Top Speed (km/h)	205
Curb Weight (kg)	1405
Maximum Gross Weight (kg)	1785
WLTP Combined Fuel Consumption (L/100km)	6.22

engine

Engine Model	JL473ZQ7
Displacement (mL)	1494
Displacement (L)	1.5
Induction Type	Turbocharging
Cylinder Arrangement	L
Number of Cylinders	4
Valves per Cylinder	4
Valve Train	DOHC
Maximum Power (PS)	188
Max Power Speed (rpm)	5500
Max Torque Speed (rpm)	1500-4000
Maximum net power (kW)	133
Fuel Grade	92.
Fuel Delivery System	Direct injection
Cylinder Head Material	Aluminum alloy

engine (continued)

Cylinder Block Material	Aluminum alloy
Engine layout	Horizontal

Screen/System

Central control color screen	<ul style="list-style-type: none">• Touch LCD screen
Infotainment Screen Size	<ul style="list-style-type: none">• 10.3 inches
Bluetooth/In-car Phone	<ul style="list-style-type: none">•
Smartphone Integration/Mirroring	<ul style="list-style-type: none">• Original interconnection/mapping
Voice recognition control system	<ul style="list-style-type: none">• Multimedia system;• Navigation;• Telephone;• Air conditioning
Facial Recognition	<ul style="list-style-type: none">•
Car Intelligent Chip	<ul style="list-style-type: none">• SuperFast
Multi-finger flying screen control	<ul style="list-style-type: none">•
Gesture Control	<ul style="list-style-type: none">•

Body

Length (mm)	4695
Width (mm)	1838
Height (mm)	1430
Wheelbase (mm)	2750
Front Track (mm)	1576
Rear Track (mm)	1586
Door Opening Type	swing door
Number of Doors	5
Number of Seats	5
Fuel Tank Capacity (L)	51
Trunk volume (L)	-
Drag Coefficient (Cd)	-
Approach Angle (°)	14
Departure Angle (°)	18

Gearbox

Abbreviation	7-speed wet dual-clutch
Number of Gears	7
Transmission Type	Wet Dual-Clutch Transmission (DCT)

Chassis steering

Chassis steering (continued)

Drive Type	Front-engine, Front-wheel drive (FF)
Front Suspension Type	MacPherson independent suspension
Rear Suspension Type	Multi-link independent suspension
Power Steering Type	Electric power assistance
Vehicle structure	bearing type

Seat Configuration

Seat Material	• Leather/suede mix and match
Main seat adjustment	• Front-to-back adjustment; • Backrest adjustment; • Height adjustment (2-way); ○ Lumbar support (4-way)
Co-seat adjustment method	• Front and rear adjustment; • Backrest adjustment
Electric adjustment of driver's seat and passenger seat	Main •/Deputy •
Front seat functions	○ Heating (driving position only);○ Ventilation (driving position only)
Electric seat memory function	○ Driving position
Front passenger seat rear adjustable buttons	-
Rear seat folding	• Proportional down
Front/rear center armrest	Front •/Rear •
Rear cup holder	•
Sports style seats	•

Active safety

Anti-lock Braking System (ABS)	•
Electronic Brakeforce Distribution (EBD/CBC)	•
Brake Assist System (EBA/BAS/BA)	•
Traction Control System (ASR/TCS/TRC)	•
Electronic Stability Control (ESC/ESP/DSC)	•
Tire Pressure Monitoring System (TPMS)	• Tire pressure display

Active safety (continued)

Seat Belt Reminder	• Front row
ISOFIX Child Seat Anchors	•
Lane Departure Warning System (LDWS)	•
Autonomous Emergency Braking (AEB)	•
Driver Fatigue Detection	•
Forward Collision Warning (FCW)	•
Built-in Dashcam	•

Air conditioning/refrigerator

Air conditioning temperature control method	• Automatic air conditioning
Rear Independent Climate Control	-
Rear seat air vents	•
Temperature zone control	-
Car air purifier	•
In-cabin PM2.5 Filter	•
Negative ion generator	•

Passive safety

Driver/passenger airbag	Main •/Deputy •
Front/rear side airbags	Front •/Rear-
Front/rear head airbags (curtain airbags)	Front •/Rear •

Wheel brake

Front Brake Type	Ventilation disc
Rear Brake Type	Disc
Parking brake type	Electronic Parking
Front Tire Size	235/40 R19
Rear Tire Size	235/40 R19
Spare Tire Size	Not full-size
Spare tire placement	In the trunk

Audio/Interior Lighting

Speaker Brand Name	○SONY (USD 294)
Number of speakers	• 8 horns; ○ 10 horns

Audio/Interior Lighting (continued)

Interior ambient lighting	<ul style="list-style-type: none">• 64 colors
----------------------------------	---

Driving functions

Navigation traffic information display	<ul style="list-style-type: none">•
Lane assist	-
Lane Keeping Assist System	<ul style="list-style-type: none">•
Cruise control system	<ul style="list-style-type: none">• Full speed adaptive cruise
Satellite navigation system	<ul style="list-style-type: none">•
Driving assistance level	<ul style="list-style-type: none">• L2
Lane centering	<ul style="list-style-type: none">•
Road traffic sign recognition	<ul style="list-style-type: none">•
Map Brand	<ul style="list-style-type: none">• Gaud
Parking Assist	-

Exterior lighting

Low beam light source	<ul style="list-style-type: none">• LED
High beam light source	<ul style="list-style-type: none">• LED
LED daytime running lights	<ul style="list-style-type: none">•
Adaptive high and low beam	<ul style="list-style-type: none">•
Automatic headlights	<ul style="list-style-type: none">•
Height-adjustable headlights	<ul style="list-style-type: none">•
Headlight Delay Off	<ul style="list-style-type: none">•

Exterior mirrors

Exterior mirror function	<ul style="list-style-type: none">• Electric adjustment;• Electric folding;• Rearview mirror heating;• Automatic folding when locked
---------------------------------	---

Appearance/anti-theft

Rim material	<ul style="list-style-type: none">• Aluminum alloy
Electric trunk	<ul style="list-style-type: none">•
Electronic engine immobilizer	<ul style="list-style-type: none">•
Central locking system in the car	<ul style="list-style-type: none">•
Key Type	<ul style="list-style-type: none">• Remote key;• Bluetooth key

Appearance/anti-theft (continued)

Keyless start system	<ul style="list-style-type: none">•
Keyless entry function	<ul style="list-style-type: none">• Front row
Appearance Kit	<ul style="list-style-type: none">• Sports style
Hands-free Trunk	<ul style="list-style-type: none">•
Electric trunk position memory	<ul style="list-style-type: none">•
Remote start function	<ul style="list-style-type: none">•
Hidden electric door handle	<ul style="list-style-type: none">•
Electric spoiler	<ul style="list-style-type: none">•

Skylight/Glass

Sunroof Type	<ul style="list-style-type: none">• Panoramic sunroof cannot be opened
Front/rear electric windows	Front •/Rear •
One-touch window lifting function	<ul style="list-style-type: none">• Full car
Window anti-pinch function	<ul style="list-style-type: none">•
Car makeup mirror	<ul style="list-style-type: none">• Main driving position; • First officer
Rear wiper	-
Rain sensor wiper function	<ul style="list-style-type: none">• Rainfall-sensing

Interior and exterior color

Exterior Color	Star Drill, Black:#000000, Black, Atom:#000000/#787878, Black, Moonlight white:#000000/#F4F4F4; dazzle red:#B11C22; dazzle gray:#464E5C; atomic ash:#ABACB0; Moonlight white:#F4F4F4, Black, dazzle red:#000000/#B11C22
Interior Color	Black, Vital Orange:#000000/#DF815A

Steering wheel/interior mirror

Steering Wheel Material	<ul style="list-style-type: none">• Cortex
Steering wheel position adjustment	<ul style="list-style-type: none">• Manual up and down front and rear adjustment
Multi-function steering wheel	<ul style="list-style-type: none">•

Steering wheel/interior mirror (continued)

Heated Steering Wheel	-
Steering wheel memory	-
Trip computer display screen	• Color
Full LCD instrument panel	•
LCD instrument size	• 10.3 inches
Interior rearview mirror function	• Manual anti-glare
Gear shifting	• Electronic gear shift
Steering Wheel Shift Paddles	•

Intelligent configuration

Connected Car Services	•
OTA Updates	•
4G/5G Network	•4G
Mobile APP remote function	• Door control; • Window control; • Vehicle start; • Air conditioning control; • Vehicle condition inquiry/diagnosis; • Vehicle location/vehicle search
Wi-Fi hotspots	•

Driving Control

Driving mode switch	• Sport; • Economy; • Standard/Comfort
Automatic parking	•
Hill start assist	•
Engine start-stop technology	•

Driving Hardware

Front/rear parking radar	Front •/Rear •
Driving Assistance Camera System	• 360-degree panoramic image
Front perception camera	• Monocular
Number of cameras	• 5
Number of ultrasonic radars	• 6
Transparent chassis/540-degree imaging	•

Driving Hardware (continued)

Millimeter wave radar quantity	• 1
Number of cameras in the car	• 2

In-car charging

Multimedia/charging port	•USB;•SD
Number of USB/Type-C ports	• 1 front row/1 back row
Mobile phone wireless charging function	• Front row

Optional Package

Optional Package	Comfortable driving package (USD 220; Including: main driver electric 10-way seat (with ventilation/heating, memory welcome)); Enjoy the sound quality package (USD 294; Including: SONY Audio (10 Speakers))
-------------------------	--

"●" = Standard equipment

"-" = Not available

"○" = Optional equipment.

Note: These are Chinese market vehicles. Warranty coverage is not available outside of China.