

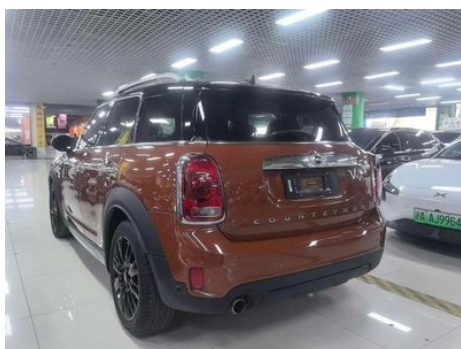
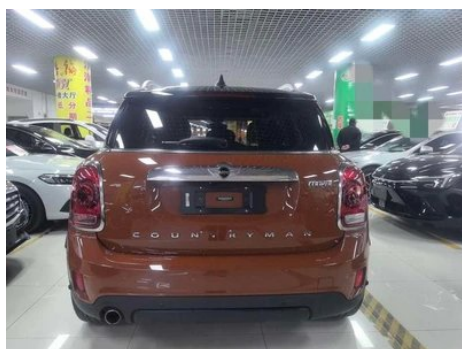
Vehicle Detail Report

MINI COUNTRYMAN 2017 1.5T COOPER ALL4

Basic Information

Brand	MINI
Mileage	59,000 km
Color	Orange
First Registration	2018-01-01
Transfer Count	0

Vehicle Images





Vehicle Condition

1. Driver seat, Wear.

Configuration Information

Model Information

Model Name	MINI COUNTRYMAN 2017 1.5T COOPER ALL4
Launch Date	2017.02

Basic parameters

Vehicle Class	Compact SUV
Energy Type	Gasoline
Maximum Power (kW)	100
Maximum Torque (N·m)	220
Transmission	8-gear manual integration
Body Type	SUV
Engine	1.5L 136 hp L3
Dimensions (L×W×H) (mm)	4310*1822*1616
Official 0-100 km/h Acceleration (s)	9.8
Top Speed (km/h)	197
Curb Weight (kg)	1628
Maximum Gross Weight (kg)	-
NEDC Combined Fuel Consumption (L/100km)	6.8

engine

Engine Model	-
Displacement (mL)	1499
Displacement (L)	1.5
Induction Type	Turbocharging
Cylinder Arrangement	L

engine (continued)

Number of Cylinders	3
Valves per Cylinder	4
Valve Train	DOHC
Maximum Power (PS)	136
Max Power Speed (rpm)	4400-6000
Max Torque Speed (rpm)	1400-4300
Maximum net power (kW)	-
Fuel Grade	95.
Fuel Delivery System	Direct injection
Cylinder Head Material	Aluminum alloy
Cylinder Block Material	Aluminum alloy
Engine layout	Horizontal

Screen/System

Central control color screen	<ul style="list-style-type: none">•
Infotainment Screen Size	•6.5 inches; ○8.8 inches
Bluetooth/In-car Phone	<ul style="list-style-type: none">•

Body

Length (mm)	4310
Width (mm)	1822
Height (mm)	1616
Wheelbase (mm)	2670
Front Track (mm)	-
Rear Track (mm)	-
Ground Clearance (Fully Loaded) (mm)	158
Door Opening Type	-
Number of Doors	5
Number of Seats	5
Fuel Tank Capacity (L)	61
Trunk volume (L)	450-1390
Drag Coefficient (Cd)	-

Gearbox

Abbreviation	8-gear manual integration
Number of Gears	8

Gearbox (continued)

Transmission Type	Automatic Transmission with Manual Mode (AT)
--------------------------	--

Chassis steering

Drive Type	Front-engine, All-wheel drive (F-AWD)
Four-wheel drive	Timely four-wheel drive
Central differential structure	Multi-plate clutch
Front Suspension Type	MacPherson independent suspension
Rear Suspension Type	Multi-link independent suspension
Power Steering Type	Electric power assistance
Vehicle structure	bearing type

Seat Configuration

Main seat adjustment	<ul style="list-style-type: none">• Front and rear adjustment;• Backrest adjustment;• Height adjustment (2-way)
Co-seat adjustment method	<ul style="list-style-type: none">• Front and rear adjustment;• Backrest adjustment
Electric adjustment of driver's seat and passenger seat	Main •/Deputy •
Front seat functions	○ Heating (USD 662)
Electric seat memory function	•
Front passenger seat rear adjustable buttons	-
Second row seat adjustment	<ul style="list-style-type: none">• Front and rear adjustment;• Backrest adjustment
Rear seat folding	<ul style="list-style-type: none">• Proportional down
Front/rear center armrest	Front •/Rear •
Rear cup holder	•
Sports style seats	•

Active safety

Anti-lock Braking System (ABS)	•
Electronic Brakeforce Distribution (EBD/CBC)	•
Brake Assist System (EBA/BAS/BA)	•

Active safety (continued)

Traction Control System (ASR/TCS/TRC)	•
Electronic Stability Control (ESC/ESP/DSC)	•
Tire Pressure Monitoring System (TPMS)	•
Seat Belt Reminder	•
ISOFIX Child Seat Anchors	•
Lane Departure Warning System (LDWS)	-
Autonomous Emergency Braking (AEB)	-
Driver Fatigue Detection	-

Air conditioning/refrigerator

Air conditioning temperature control method	• Manual air conditioning; ○ Automatic air conditioning (USD 662)
Rear Independent Climate Control	-
Rear seat air vents	-
Temperature zone control	○
Car air purifier	-
In-cabin PM2.5 Filter	-

Passive safety

Driver/passenger airbag	Main •/Deputy •
Front/rear side airbags	Front •/Rear-
Front/rear head airbags (curtain airbags)	Front •/Rear •
Run-flat tires	•

Wheel brake

Front Brake Type	Ventilation disc
Rear Brake Type	Disc
Parking brake type	Electronic Parking
Front Tire Size	-
Rear Tire Size	205/55 R17
Spare Tire Size	None

Audio/Interior Lighting

Audio/Interior Lighting (continued)

Speaker Brand Name	<input type="radio"/> Harman/Kardon Harman Kardon (USD 1,176)
Number of speakers	•6-7 speakers; <input type="radio"/> 8-9 speakers
Interior ambient lighting	•

Driving functions

Navigation traffic information display	-
Lane assist	-
Lane Keeping Assist System	-
Cruise control system	• Cruise control
Satellite navigation system	<input type="radio"/>
Parking Assist	<input type="radio"/>

Exterior lighting

Low beam light source	• Halogen; <input type="radio"/> LED
High beam light source	• Halogen; <input type="radio"/> LED
LED daytime running lights	-
Adaptive high and low beam	-
Automatic headlights	•
Front fog lights	•
Height-adjustable headlights	•
Headlight Delay Off	-
Turn headlights	<input type="radio"/>

Exterior mirrors

Exterior mirror function	• Electric adjustment; <input type="radio"/> Electric folding; • Mirror memory; • Heated mirrors; <input type="radio"/> Auto-dimming (USD 147)
---------------------------------	--

Appearance/anti-theft

Rim material	• Aluminum alloy
Electric trunk	<input type="radio"/>
Electronic engine immobilizer	•
Central locking system in the car	•
Key Type	• Remote key

Appearance/anti-theft (continued)

Keyless start system	•
Keyless entry function	○
Hands-free Trunk	○
Roof rack	•

Skylight/Glass

Sunroof Type	• Electric sunroof
Front/rear electric windows	Front •/Rear •
One-touch window lifting function	• Full car
Window anti-pinch function	•
Car makeup mirror	•
Rear wiper	•
Rain sensor wiper function	•

Interior and exterior color

Exterior Color	Streamed Silver:#8F8F85; Chili Red:#C20016; Night Black:#020506; Bright, White, #D2DBE0; British green:#003C1A; Jin Shi Qing:#000335; Chestnut brown:#412014; Island blue:#005F80; Monthly gray:#5C5E5F
Interior Color	Carbon black: #000000

Steering wheel/interior mirror

Steering Wheel Material	• Cortex
Steering wheel position adjustment	• Manual up and down front and rear adjustment
Multi-function steering wheel	•
Heated Steering Wheel	-
Steering wheel memory	-
Trip computer display screen	•
Full LCD instrument panel	-
Interior rearview mirror function	○ Auto-dimming (USD 221)
HUD Head Up Digital Display	○

Intelligent configuration

Connected Car Services	-
OTA Updates	-

Driving Control

Automatic parking	-
Hill start assist	•
Variable suspension function	○ Suspension hardness adjustment (USD 735)
Engine start-stop technology	•

Driving Hardware

Front/rear parking radar	Front ○/Rear •
Driving Assistance Camera System	○ Reversing image

In-car charging

Multimedia/charging port	•USB;•AUX
Mobile phone wireless charging function	○

"●" = Standard equipment

"_" = Not available

"○" = Optional equipment.

Note: These are Chinese market vehicles. Warranty coverage is not available outside of China.