

Vehicle Detail Report

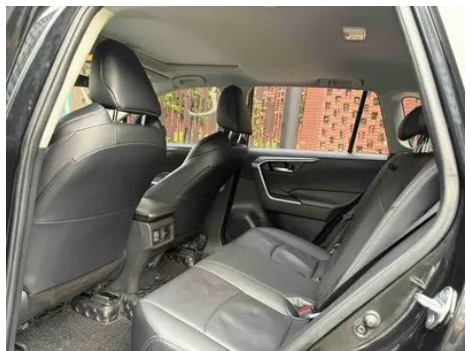
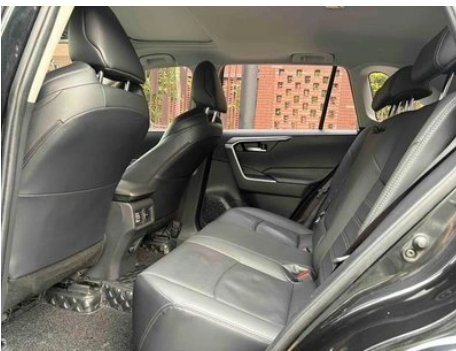
Wildlander 2020 2.0L Four-wheel drive deluxe edition

Basic Information

Brand	Toyota
Mileage	78,000 km
Color	Black
First Registration	2021-01-01
Transfer Count	0

Vehicle Images





Vehicle Condition

1. Inner side of right A-pillar, Deformation. 2. Driver seat rails and frame, Signs of disassembly. 3. Passenger seat rails and frame, Signs of disassembly. 4. Left rear fender, Paint repair, Bodywork repair.

Configuration Information

Model Information

Model Information (continued)

Model Name	Wildlander 2020 2.0L CVT Four-wheel drive deluxe edition
Launch Date	2020.02

Basic parameters

Vehicle Class	Compact SUV
Energy Type	Gasoline
Maximum Power (kW)	126
Maximum Torque (N·m)	209
Transmission	CVT continuously variable (simulating 10 gears)
Body Type	SUV
Engine	2.0L 171 horsepower L4
Dimensions (L×W×H) (mm)	4665*1855*1680
Official 0-100 km/h Acceleration (s)	-
Top Speed (km/h)	180
Curb Weight (kg)	1615
Maximum Gross Weight (kg)	-
NEDC Combined Fuel Consumption (L/100km)	6.3

engine

Engine Model	M20C
Displacement (mL)	1987
Displacement (L)	2.0
Induction Type	Natural aspiration
Cylinder Arrangement	L
Number of Cylinders	4
Valves per Cylinder	4
Compression Ratio	13
Valve Train	DOHC
Bore (mm)	80.5
Stroke (mm)	97.6
Maximum Power (PS)	171
Max Power Speed (rpm)	6600

engine (continued)

Max Torque Speed (rpm)	4400-5000
Maximum net power (kW)	126
Fuel Grade	92.
Fuel Delivery System	Mixed injection
Cylinder Head Material	Aluminum alloy
Cylinder Block Material	Aluminum alloy
Engine layout	Horizontal

Screen/System

Central control color screen	<ul style="list-style-type: none">• Touch LCD screen
Infotainment Screen Size	<ul style="list-style-type: none">• 10.1 inches
Bluetooth/In-car Phone	<ul style="list-style-type: none">•
Smartphone Integration/Mirroring	<ul style="list-style-type: none">• Support CarLife;• Factory interconnection/mapping
Voice recognition control system	<ul style="list-style-type: none">• Multimedia system; • Navigation; • Telephone

Body

Length (mm)	4665
Width (mm)	1855
Height (mm)	1680
Wheelbase (mm)	2690
Front Track (mm)	1605
Rear Track (mm)	1620
Door Opening Type	swing door
Number of Doors	5
Number of Seats	5
Fuel Tank Capacity (L)	55
Trunk volume (L)	580
Drag Coefficient (Cd)	-
Approach Angle (°)	17.8
Departure Angle (°)	20.1
Minimum Turning Radius (m)	5.5

Gearbox

Abbreviation	CVT continuously variable (simulating 10 gears)
---------------------	---

Gearbox (continued)

Number of Gears	10
Transmission Type	Continuously Variable Transmission (CVT)

Chassis steering

Drive Type	Front-engine, All-wheel drive (F-AWD)
Four-wheel drive	Timely four-wheel drive
Central differential structure	Multi-plate clutch
Front Suspension Type	MacPherson independent suspension
Rear Suspension Type	E-type multi-link independent suspension
Power Steering Type	Electric power assistance
Vehicle structure	bearing type

Seat Configuration

Seat Material	<ul style="list-style-type: none">• Genuine leather;• Faux leather
Main seat adjustment	<ul style="list-style-type: none">• Front and rear adjustment;• Backrest adjustment;• Height adjustment (4-way);• Lumbar support (2-way)
Co-seat adjustment method	<ul style="list-style-type: none">• Front and rear adjustment;• Backrest adjustment
Electric adjustment of driver's seat and passenger seat	Main/Deputy-
Front passenger seat rear adjustable buttons	-
Second row seat adjustment	<ul style="list-style-type: none">• Backrest adjustment
Rear seat folding	<ul style="list-style-type: none">• Proportional down
Front/rear center armrest	Front •/Rear •
Rear cup holder	<ul style="list-style-type: none">•

Active safety

Anti-lock Braking System (ABS)	<ul style="list-style-type: none">•
Electronic Brakeforce Distribution (EBD/CBC)	<ul style="list-style-type: none">•
Brake Assist System (EBA/BAS/BA)	<ul style="list-style-type: none">•

Active safety (continued)

Traction Control System (ASR/TCS/TRC)	•
Electronic Stability Control (ESC/ESP/DSC)	•
Tire Pressure Monitoring System (TPMS)	• Tire pressure alarm
Seat Belt Reminder	• Full car
ISOFIX Child Seat Anchors	•
Lane Departure Warning System (LDWS)	•
Autonomous Emergency Braking (AEB)	•
Driver Fatigue Detection	-
Emergency Call System (eCall)	•

Air conditioning/refrigerator

Air conditioning temperature control method	• Automatic air conditioning
Rear Independent Climate Control	-
Rear seat air vents	•
Temperature zone control	•
Car air purifier	-
In-cabin PM2.5 Filter	•

Passive safety

Driver/passenger airbag	Main •/Deputy •
Front/rear side airbags	Front •/Rear-
Front/rear head airbags (curtain airbags)	Front •/Rear •
Knee airbag	• Main driver knee airbag

Wheel brake

Front Brake Type	Ventilation disc
Rear Brake Type	Disc
Parking brake type	Electronic Parking
Front Tire Size	225/60 R18
Rear Tire Size	225/60 R18
Spare Tire Size	Not full-size

Audio/Interior Lighting

Number of speakers	• 6 speakers
---------------------------	--------------

Driving functions

Navigation traffic information display	•
Lane assist	-
Lane Keeping Assist System	•
Cruise control system	• Full speed adaptive cruise
Satellite navigation system	•
Parking Assist	-

Exterior lighting

Low beam light source	•LED
High beam light source	•LED
LED daytime running lights	•
Adaptive high and low beam	•
Automatic headlights	•
Front fog lights	•LED
Height-adjustable headlights	•
Headlight Delay Off	-

Exterior mirrors

Exterior mirror function	• Electric adjustment
---------------------------------	-----------------------

Appearance/anti-theft

Rim material	• Aluminum alloy
Electric trunk	-
Electronic engine immobilizer	•
Central locking system in the car	•
Key Type	• Remote key
Keyless start system	•
Keyless entry function	• Front row

Skylight/Glass

Sunroof Type	• Electric sunroof
---------------------	--------------------

Skylight/Glass (continued)

Front/rear electric windows	Front •/Rear •
One-touch window lifting function	• Full car
Window anti-pinch function	•
Car makeup mirror	• Main driver's lamp; • co-pilot's lamp
Rear wiper	•

Interior and exterior color

Exterior Color	Platinum, Pearl, White:#DCE2E0, Sea Drill Blue: #0F4A93; Amber Brown: #301513, Ink Crystal, Black:#000000, Black jade, Blue: #254D5E; Opal Silver: #D0D0D0
Interior Color	Gray: #F6F6F8, Black, #414544

Steering wheel/interior mirror

Steering Wheel Material	• Plastic
Steering wheel position adjustment	• Manual up and down front and rear adjustment
Multi-function steering wheel	•
Heated Steering Wheel	-
Steering wheel memory	-
Trip computer display screen	• Color
Full LCD instrument panel	-
LCD instrument size	• 4.2 inches
Interior rearview mirror function	• Manual anti-glare

Intelligent configuration

Connected Car Services	-
OTA Updates	-

Driving Control

Driving mode switch	• Sport; • Economy; • Standard/Comfort; • Off-road; • Snow
Automatic parking	•
Hill start assist	•
Engine start-stop technology	•

Driving Hardware

Front/rear parking radar	Front •/Rear •
Driving Assistance Camera System	• Reversing image

In-car charging

Multimedia/charging port	•USB;•AUX
Number of USB/Type-C ports	• 1 in the front row/2 in the back row
Luggage compartment 12V power socket	•

"●" = Standard equipment

"-" = Not available

"○" = Optional equipment.

Note: These are Chinese market vehicles. Warranty coverage is not available outside of China.