

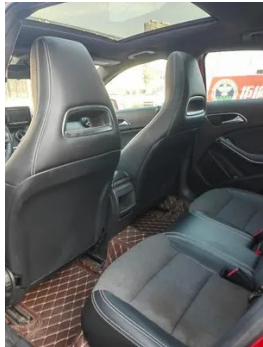
# Vehicle Detail Report

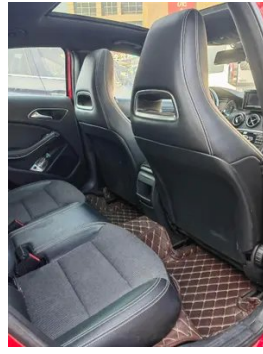
## Mercedes-Benz A-Class 2013 A 180 Fashionable

### Basic Information

Brand	Mercedes-Benz
Mileage	92,000 km
Color	Red
First Registration	2014-01-01
Transfer Count	1

### Vehicle Images





## Vehicle Condition

1. Right upper side rail, Paint repair. 2. Right rear quarter panel, Paint repair, Body panel repair.

## Configuration Information

### Model Information

<b>Model Name</b>	Mercedes-Benz A-Class 2013 A 180 Fashionable
<b>Launch Date</b>	2013.04

### Basic parameters

<b>Vehicle Class</b>	compact car
<b>Energy Type</b>	Gasoline
<b>Maximum Power (kW)</b>	90
<b>Maximum Torque (N·m)</b>	200
<b>Transmission</b>	7-speed wet dual-clutch
<b>Body Type</b>	Hatchback
<b>Engine</b>	1.6T 122 horsepower L4
<b>Dimensions (L×W×H) (mm)</b>	4292*1780*1433
<b>Official 0-100 km/h Acceleration (s)</b>	9.1
<b>Top Speed (km/h)</b>	202
<b>Curb Weight (kg)</b>	1395
<b>Maximum Gross Weight (kg)</b>	-
<b>NEDC Combined Fuel Consumption (L/100km)</b>	6

## engine

<b>Engine Model</b>	270 910
<b>Displacement (mL)</b>	1595
<b>Displacement (L)</b>	1.6
<b>Induction Type</b>	Turbocharging
<b>Cylinder Arrangement</b>	L
<b>Number of Cylinders</b>	4
<b>Valves per Cylinder</b>	4
<b>Valve Train</b>	DOHC
<b>Maximum Power (PS)</b>	122
<b>Max Power Speed (rpm)</b>	5000
<b>Max Torque Speed (rpm)</b>	1250-4000
<b>Maximum net power (kW)</b>	-
<b>Fuel Grade</b>	95.
<b>Fuel Delivery System</b>	Direct injection
<b>Cylinder Head Material</b>	Aluminum alloy
<b>Cylinder Block Material</b>	Aluminum alloy

## Screen/System

<b>Central control color screen</b>	<ul style="list-style-type: none"><li>•</li></ul>
<b>Bluetooth/In-car Phone</b>	<ul style="list-style-type: none"><li>•</li></ul>
<b>In-car CD/DVD Player</b>	<ul style="list-style-type: none"><li>• Multi-disc CD system</li></ul>

## Body

<b>Length (mm)</b>	4292
<b>Width (mm)</b>	1780
<b>Height (mm)</b>	1433
<b>Wheelbase (mm)</b>	2699
<b>Front Track (mm)</b>	1553
<b>Rear Track (mm)</b>	1552
<b>Door Opening Type</b>	-
<b>Number of Doors</b>	5
<b>Number of Seats</b>	5
<b>Fuel Tank Capacity (L)</b>	50
<b>Trunk volume (L)</b>	341-1157
<b>Drag Coefficient (Cd)</b>	-

## Gearbox

<b>Abbreviation</b>	7-speed wet dual-clutch
<b>Number of Gears</b>	7
<b>Transmission Type</b>	Wet Dual-Clutch Transmission (DCT)

## Chassis steering

<b>Drive Type</b>	Front-engine, Front-wheel drive (FF)
<b>Front Suspension Type</b>	MacPherson independent suspension
<b>Rear Suspension Type</b>	Four-link independent suspension
<b>Power Steering Type</b>	Electric power assistance
<b>Vehicle structure</b>	bearing type

## Seat Configuration

<b>Seat Material</b>	• Leather
<b>Main seat adjustment</b>	• Front and rear adjustment; • Backrest adjustment; • Height adjustment (2-way);○ Height adjustment (4-way)
<b>Co-seat adjustment method</b>	• Front and rear adjustment; • Backrest adjustment
<b>Electric adjustment of driver's seat and passenger seat</b>	Principal ○/Deputy-
<b>Electric seat memory function</b>	○
<b>Front passenger seat rear adjustable buttons</b>	-
<b>Rear seat folding</b>	• Proportional down
<b>Front/rear center armrest</b>	Front •/Rear-
<b>Rear cup holder</b>	-

## Active safety

<b>Anti-lock Braking System (ABS)</b>	•
<b>Electronic Brakeforce Distribution (EBD/CBC)</b>	•
<b>Brake Assist System (EBA/BAS/BA)</b>	•
<b>Traction Control System (ASR/TCS/TRC)</b>	•
<b>Electronic Stability Control (ESC/ESP/DSC)</b>	•

## Active safety (continued)

<b>Tire Pressure Monitoring System (TPMS)</b>	•
<b>Seat Belt Reminder</b>	•
<b>ISOFIX Child Seat Anchors</b>	•
<b>Lane Departure Warning System (LDWS)</b>	-
<b>Autonomous Emergency Braking (AEB)</b>	-
<b>Driver Fatigue Detection</b>	-

## Air conditioning/refrigerator

<b>Air conditioning temperature control method</b>	• Manual air conditioning
<b>Rear Independent Climate Control</b>	-
<b>Rear seat air vents</b>	-
<b>Temperature zone control</b>	-
<b>Car air purifier</b>	-
<b>In-cabin PM2.5 Filter</b>	-

## Passive safety

<b>Driver/passenger airbag</b>	Main •/Deputy •
<b>Front/rear side airbags</b>	Front •/Rear-
<b>Front/rear head airbags (curtain airbags)</b>	Front •/Rear •
<b>Run-flat tires</b>	•
<b>Knee airbag</b>	• Main driver knee airbag

## Wheel brake

<b>Front Brake Type</b>	Ventilation disc
<b>Rear Brake Type</b>	Disc
<b>Parking brake type</b>	Electronic Parking
<b>Front Tire Size</b>	205/55 R16
<b>Rear Tire Size</b>	205/55 R16
<b>Spare Tire Size</b>	None

## Audio/Interior Lighting

<b>Number of speakers</b>	• 6-7 Horns
---------------------------	-------------

## Driving functions

## Driving functions (continued)

<b>Navigation traffic information display</b>	-
<b>Lane assist</b>	-
<b>Lane Keeping Assist System</b>	-
<b>Cruise control system</b>	• Cruise control
<b>Satellite navigation system</b>	○
<b>Parking Assist</b>	•

## Exterior lighting

<b>LED daytime running lights</b>	-
<b>Adaptive high and low beam</b>	-
<b>Automatic headlights</b>	•
<b>Height-adjustable headlights</b>	•
<b>Headlight Delay Off</b>	-

## Exterior mirrors

<b>Exterior mirror function</b>	• Electric adjustment; ○ Mirror memory; • Mirror heating
---------------------------------	--

## Appearance/anti-theft

<b>Rim material</b>	• Aluminum alloy
<b>Electric trunk</b>	-
<b>Electronic engine immobilizer</b>	•
<b>Central locking system in the car</b>	•
<b>Key Type</b>	• Remote key
<b>Keyless start system</b>	-

## Skylight/Glass

<b>Sunroof Type</b>	• Panoramic sunroof
<b>Front/rear electric windows</b>	Front •/Rear •
<b>Window anti-pinch function</b>	•
<b>Car makeup mirror</b>	•
<b>Rear wiper</b>	•

## Interior and exterior color

## Interior and exterior color (continued)

<b>Exterior Color</b>	Jupiter red:#921823; Cirrus white:#EDEBDE; South China Sea Blue:#2E517B; Mountain gray:#414047; Canyon beige:#C4915C; Matte mountain gray:#49484D; Rock gray:#665C53; Night black:#50483E; Cosmic black:#3C3847; Cosmic blue:#6A7E85
<b>Interior Color</b>	Black:#000000; Black/White:#000000/#FFFFFF; Black/Crystal Grey:#000000/#B8B9B3

## Steering wheel/interior mirror

<b>Steering Wheel Material</b>	• Cortex
<b>Steering wheel position adjustment</b>	• Manual up and down front and rear adjustment
<b>Multi-function steering wheel</b>	•
<b>Heated Steering Wheel</b>	-
<b>Steering wheel memory</b>	-
<b>Trip computer display screen</b>	•
<b>Full LCD instrument panel</b>	-
<b>Interior rearview mirror function</b>	• Manual anti-glare
<b>Steering Wheel Shift Paddles</b>	•

## Intelligent configuration

<b>Connected Car Services</b>	-
<b>OTA Updates</b>	-

## Driving Control

<b>Automatic parking</b>	•
<b>Hill start assist</b>	•

## Driving Hardware

<b>Front/rear parking radar</b>	Front •/Rear •
---------------------------------	----------------

---

"●" = Standard equipment

"□" = Not available

"○" = Optional equipment.

Note: These are Chinese market vehicles. Warranty coverage is not available outside of China.