

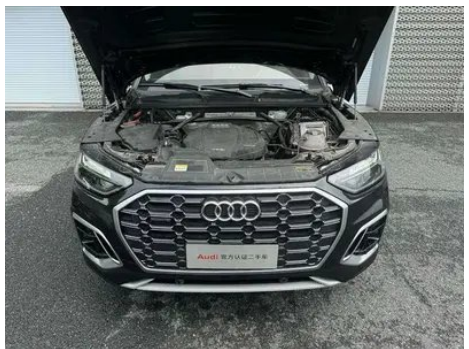
# Vehicle Detail Report

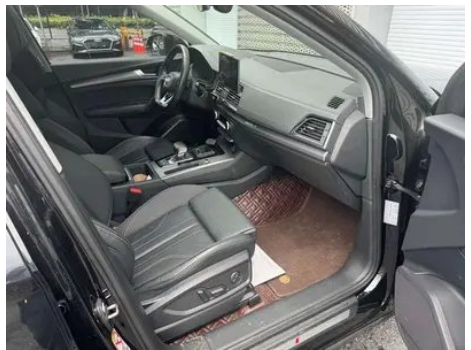
## Audi Q5L 2022 40T Deluxe Dynamic

### Basic Information

Brand	Audi
Mileage	50,000 km
Color	Black
First Registration	2022-07-01
Transfer Count	1

### Vehicle Images





## Vehicle Condition

1. Driver's seat rails and frame, Signs of removal. 2. Front passenger seat rails and frame, Signs of removal. 3. Hood, Scratch. 4. Front bumper, Scrape, Scratch damage. 5. Rear bumper, Scratch damage. 6. Left front door, Scratch damage. 7. Right front door, Scratch. 8. Left rear door, Scratch, Scratch damage. 9. Right rear door, Paint chip, Deformation, Scratch. 10. Trunk lid, Scratch. 11. Left front fender, Scratch. 12. Right front fender, Scratch. 13. Left rear quarter panel, Scratch. 14. Right rear quarter panel, Scratch. 15. Driver's seat, Wear.

## Configuration Information

### Model Information

<b>Model Name</b>	Q5L 2022 40T Luxury Dynamic Model
<b>Launch Date</b>	2021.10

### Basic parameters

<b>Vehicle Class</b>	Mid-size SUV
----------------------	--------------

## Basic parameters (continued)

<b>Energy Type</b>	Gasoline
<b>Maximum Power (kW)</b>	140
<b>Maximum Torque (N·m)</b>	320
<b>Transmission</b>	7-speed wet dual-clutch
<b>Body Type</b>	SUV
<b>Engine</b>	2.0L 190 hp L4
<b>Dimensions (L×W×H) (mm)</b>	4770*1893*1667
<b>Official 0-100 km/h Acceleration (s)</b>	9
<b>Top Speed (km/h)</b>	211
<b>Curb Weight (kg)</b>	1870
<b>Maximum Gross Weight (kg)</b>	2355
<b>NEDC Combined Fuel Consumption (L/100km)</b>	7.2
<b>WLTP Combined Fuel Consumption (L/100km)</b>	7.86

## engine

<b>Engine Model</b>	DTA
<b>Displacement (mL)</b>	1984
<b>Displacement (L)</b>	2.0
<b>Induction Type</b>	Turbocharging
<b>Cylinder Arrangement</b>	L
<b>Number of Cylinders</b>	4
<b>Valves per Cylinder</b>	4
<b>Valve Train</b>	DOHC
<b>Maximum Power (PS)</b>	190
<b>Max Power Speed (rpm)</b>	-
<b>Max Torque Speed (rpm)</b>	-
<b>Maximum net power (kW)</b>	140
<b>Fuel Grade</b>	95.
<b>Fuel Delivery System</b>	Mixed injection
<b>Cylinder Head Material</b>	Aluminum alloy
<b>Cylinder Block Material</b>	Cast iron
<b>Engine layout</b>	Longitudinal

## Screen/System

<b>Central control color screen</b>	<ul style="list-style-type: none"><li>• Touch LCD screen</li></ul>
<b>Infotainment Screen Size</b>	<ul style="list-style-type: none"><li>• 10.1 inches</li></ul>
<b>Bluetooth/In-car Phone</b>	<ul style="list-style-type: none"><li>•</li></ul>
<b>Smartphone Integration/Mirroring</b>	<ul style="list-style-type: none"><li>• Support CarPlay</li></ul>
<b>Voice recognition control system</b>	<ul style="list-style-type: none"><li>• Multimedia system;</li><li>• Navigation;</li><li>• Telephone</li></ul>

## Body

<b>Length (mm)</b>	4770
<b>Width (mm)</b>	1893
<b>Height (mm)</b>	1667
<b>Wheelbase (mm)</b>	2907
<b>Front Track (mm)</b>	1616
<b>Rear Track (mm)</b>	1610
<b>Ground Clearance (Fully Loaded) (mm)</b>	166
<b>Door Opening Type</b>	swing door
<b>Number of Doors</b>	5
<b>Number of Seats</b>	5
<b>Fuel Tank Capacity (L)</b>	73
<b>Trunk volume (L)</b>	550
<b>Drag Coefficient (Cd)</b>	-
<b>Approach Angle (°)</b>	21
<b>Departure Angle (°)</b>	23
<b>Minimum Turning Radius (m)</b>	5.9

## Gearbox

<b>Abbreviation</b>	7-speed wet dual-clutch
<b>Number of Gears</b>	7
<b>Transmission Type</b>	Wet Dual-Clutch Transmission (DCT)

## Chassis steering

<b>Drive Type</b>	Front-engine, All-wheel drive (F-AWD)
<b>Four-wheel drive</b>	Timely four-wheel drive
<b>Central differential structure</b>	Multi-plate clutch

## Chassis steering (continued)

<b>Front Suspension Type</b>	Five-link independent suspension
<b>Rear Suspension Type</b>	Five-link independent suspension
<b>Power Steering Type</b>	Electric power assistance
<b>Vehicle structure</b>	bearing type

## Seat Configuration

<b>Seat Material</b>	<ul style="list-style-type: none"><li>• Imitation leather</li></ul>
<b>Main seat adjustment</b>	<ul style="list-style-type: none"><li>• Front and rear adjustment;</li><li>• Backrest adjustment;</li><li>• Height adjustment (4-way);</li><li>• Leg rest adjustment;</li><li>• Lumbar support (4-way)</li></ul>
<b>Co-seat adjustment method</b>	<ul style="list-style-type: none"><li>• Front and rear adjustment;</li><li>• Backrest adjustment;</li><li>• Height adjustment (4-way);</li><li>• Leg rest adjustment;</li><li>• Lumbar support (4-way)</li></ul>
<b>Electric adjustment of driver's seat and passenger seat</b>	Main <input type="checkbox"/> /Deputy <input type="checkbox"/>
<b>Front seat functions</b>	<ul style="list-style-type: none"><li>• Heating;</li><li><input type="checkbox"/> Ventilation (USD 1,456)</li></ul>
<b>Electric seat memory function</b>	<input type="checkbox"/> Driving position (USD 368)
<b>Front passenger seat rear adjustable buttons</b>	-
<b>Rear seat folding</b>	<ul style="list-style-type: none"><li>• Proportional down</li></ul>
<b>Front/rear center armrest</b>	Front <input type="checkbox"/> /Rear <input type="checkbox"/>
<b>Rear cup holder</b>	<ul style="list-style-type: none"><li>•</li></ul>
<b>Second row seat functions</b>	<input type="checkbox"/> Heating (USD 471)
<b>Sports style seats</b>	<ul style="list-style-type: none"><li>•</li></ul>
<b>Heated/cooled cup holder</b>	<input type="checkbox"/> Heating (USD 235)

## Active safety

<b>Anti-lock Braking System (ABS)</b>	<ul style="list-style-type: none"><li>•</li></ul>
<b>Electronic Brakeforce Distribution (EBD/CBC)</b>	<ul style="list-style-type: none"><li>•</li></ul>
<b>Brake Assist System (EBA/BAS/BA)</b>	<ul style="list-style-type: none"><li>•</li></ul>
<b>Traction Control System (ASR/TCS/TRC)</b>	<ul style="list-style-type: none"><li>•</li></ul>

## Active safety (continued)

<b>Electronic Stability Control (ESC/ESP/DSC)</b>	•
<b>Tire Pressure Monitoring System (TPMS)</b>	• Tire pressure alarm
<b>Seat Belt Reminder</b>	• Front row
<b>ISOFIX Child Seat Anchors</b>	•
<b>Lane Departure Warning System (LDWS)</b>	•
<b>Autonomous Emergency Braking (AEB)</b>	•
<b>Driver Fatigue Detection</b>	-
<b>Emergency Call System (eCall)</b>	•

## Air conditioning/refrigerator

<b>Air conditioning temperature control method</b>	• Automatic air conditioning
<b>Rear Independent Climate Control</b>	•
<b>Rear seat air vents</b>	•
<b>Temperature zone control</b>	•
<b>Car air purifier</b>	-
<b>In-cabin PM2.5 Filter</b>	-

## Passive safety

<b>Driver/passenger airbag</b>	Main •/Deputy •
<b>Front/rear side airbags</b>	Front/rear rear side airbag (USD 235)
<b>Front/rear head airbags (curtain airbags)</b>	Front •/Rear •

## Wheel brake

<b>Front Brake Type</b>	Ventilation disc
<b>Rear Brake Type</b>	Ventilation disc
<b>Parking brake type</b>	Electronic Parking
<b>Front Tire Size</b>	235/55 R19
<b>Rear Tire Size</b>	235/55 R19
<b>Spare Tire Size</b>	None

## Audio/Interior Lighting

<b>Speaker Brand Name</b>	○ Bang & Olufsen(USD 1,059)
---------------------------	-----------------------------

## Audio/Interior Lighting (continued)

<b>Number of speakers</b>	• 10 horns; ○ 19 horns
<b>Interior ambient lighting</b>	• 30 colors
<b>Touch reading light</b>	•

## Driving functions

<b>Navigation traffic information display</b>	•
<b>Lane assist</b>	○(USD 1,029)
<b>Lane Keeping Assist System</b>	○(USD 647)
<b>Cruise control system</b>	• Constant speed cruise; ○ Adaptive cruise (USD 2,382)
<b>Satellite navigation system</b>	•
<b>Rear Cross Traffic Alert</b>	○(USD 176)
<b>Parking Assist</b>	•

## Exterior lighting

<b>Low beam light source</b>	•LED
<b>High beam light source</b>	•LED
<b>LED daytime running lights</b>	•
<b>Adaptive high and low beam</b>	○(USD 294)
<b>Automatic headlights</b>	•
<b>Height-adjustable headlights</b>	•
<b>Headlight Delay Off</b>	•
<b>Lighting features</b>	○ Matrix (USD 1,176)
<b>Turn headlights</b>	○
<b>Headlight rain and fog mode</b>	•
<b>Headlight cleaning device</b>	○(USD 1,176)

## Exterior mirrors

<b>Exterior mirror function</b>	• Electric adjustment; • Electric folding; ○ Rearview mirror memory (USD 147); • Rearview mirror heating; • Automatically turn down when reversing; • Automatically fold when locking the car; • Automatic anti-glare
---------------------------------	---

## Appearance/anti-theft

## Appearance/anti-theft (continued)

<b>Rim material</b>	• Aluminum alloy
<b>Electric trunk</b>	•
<b>Electronic engine immobilizer</b>	•
<b>Central locking system in the car</b>	•
<b>Key Type</b>	• Remote key
<b>Keyless start system</b>	•
<b>Keyless entry function</b>	• Full car
<b>Appearance Kit</b>	• Sports style
<b>Hands-free Trunk</b>	•
<b>Electric trunk position memory</b>	•
<b>Roof rack</b>	•
<b>Active closed grille</b>	•
<b>Side pedals</b>	<input type="radio"/> Fixed (USD 515)

## Skylight/Glass

<b>Sunroof Type</b>	• Openable panoramic sunroof
<b>Front/rear electric windows</b>	Front •/Rear •
<b>One-touch window lifting function</b>	• Full car
<b>Window anti-pinch function</b>	•
<b>Car makeup mirror</b>	• Main driver's lamp; • co-pilot's lamp
<b>Rear wiper</b>	•
<b>Rain sensor wiper function</b>	• Rainfall-sensing
<b>Rear side window sunshades</b>	<input type="radio"/> Manual (USD 515)

## Interior and exterior color

<b>Exterior Color</b>	Legendary Black:#101010; Sohu Brown:#50463C; Matador Red:#69091E; Rhythmic blue:#143250; Tanggula White:#E9E9E9; Sky Cloud Grey:#646464; Interstellar Blue:#053250; Ibis White:#F7F6F1
-----------------------	--

## Interior and exterior color (continued)

<b>Interior Color</b>	Black: #000000; Black/Alaskan Red: #000000/#821E22; Black/Occapi Brown: #000000/#966446; Black/Rock Gray: #000000/#BCBCBC
-----------------------	---

## Steering wheel/interior mirror

<b>Steering Wheel Material</b>	• Leather
<b>Steering wheel position adjustment</b>	• Manual up and down front and rear adjustment
<b>Multi-function steering wheel</b>	•
<b>Heated Steering Wheel</b>	○(USD 147)
<b>Steering wheel memory</b>	-
<b>Trip computer display screen</b>	• Color
<b>Full LCD instrument panel</b>	•
<b>LCD instrument size</b>	• 12.3 inches
<b>Interior rearview mirror function</b>	• Automatic anti-glare
<b>HUD Head Up Digital Display</b>	○(USD 2,632)
<b>Steering Wheel Shift Paddles</b>	•

## Intelligent configuration

<b>Connected Car Services</b>	•
<b>OTA Updates</b>	-

## Driving Control

<b>Driving mode switch</b>	• Sport; • Standard/Comfort; • Off-road
<b>Automatic parking</b>	•
<b>Steep slope descent</b>	•
<b>Hill start assist</b>	•
<b>Engine start-stop technology</b>	•

## Driving Hardware

<b>Front/rear parking radar</b>	Front •/Rear •
<b>Driving Assistance Camera System</b>	• Reversing image; ○ 360-degree panoramic image (USD 544)

## In-car charging

<b>Multimedia/charging port</b>	•USB;•Type-C
---------------------------------	--------------

## In-car charging (continued)

<b>Number of USB/Type-C ports</b>	• 2 in the front row/2 in the back row
<b>Luggage compartment 12V power socket</b>	•

---

"●" = Standard equipment

"\_" = Not available

"○" = Optional equipment.

Note: These are Chinese market vehicles. Warranty coverage is not available outside of China.