

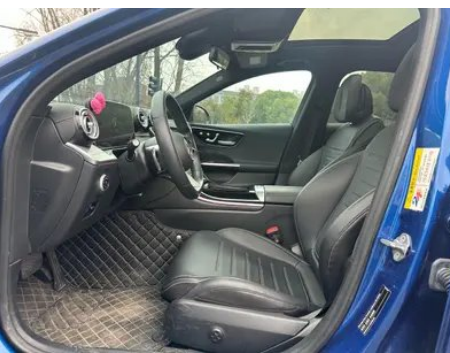
Vehicle Detail Report

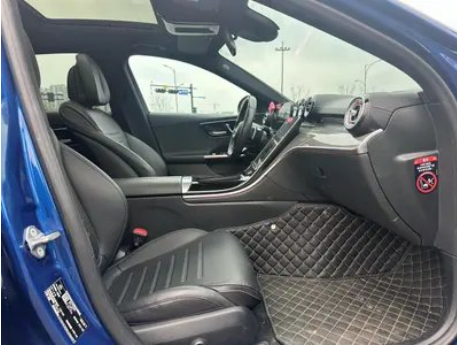
Mercedes-Benz C-Class 2022 C 260 L Sports version

Basic Information

Brand	Mercedes-Benz
Mileage	45,000 km
Color	Blue
First Registration	2022-01-01
Transfer Count	0

Vehicle Images







Vehicle Condition

1. Right upper side rail, Paint repair.
2. Inner side of right C-pillar, Paint repair.
3. Right rear quarter panel, Paint repair, Body panel repair.

Configuration Information

Model Information

Model Name	Mercedes-Benz C-Class 2022 C 260 L Sports version
Launch Date	2021.08

Basic parameters

Vehicle Class	Mid-size car
Energy Type	Gasoline + 48V Mild Hybrid System
Maximum Power (kW)	150
Maximum Torque (N·m)	300
Transmission	9-gear manual integration
Body Type	Sedan
Engine	1.5L 204 hp L4
Dimensions (L×W×H) (mm)	4882*1820*1461
Official 0-100 km/h Acceleration (s)	7.7
Top Speed (km/h)	236
Curb Weight (kg)	1740
Maximum Gross Weight (kg)	-
WLTP Combined Fuel Consumption (L/100km)	6.35

engine

Engine Model	254 915
Displacement (mL)	1496
Displacement (L)	1.5
Induction Type	Turbocharging
Cylinder Arrangement	L

engine (continued)

Number of Cylinders	4
Valves per Cylinder	4
Valve Train	DOHC
Maximum Power (PS)	204
Max Power Speed (rpm)	6100
Max Torque Speed (rpm)	1800-4000
Maximum net power (kW)	150
Fuel Grade	95.
Fuel Delivery System	Direct injection
Cylinder Head Material	Aluminum alloy
Cylinder Block Material	Aluminum alloy
Engine layout	Longitudinal

Screen/System

Central control color screen	<ul style="list-style-type: none">• Touch LCD screen
Infotainment Screen Size	<ul style="list-style-type: none">• 11.9 inches
Bluetooth/In-car Phone	<ul style="list-style-type: none">•
Smartphone Integration/Mirroring	<ul style="list-style-type: none">• Support CarPlay;• Support Android Auto
Voice recognition control system	<ul style="list-style-type: none">• Multimedia system;• Navigation;• Telephone;• Air conditioning

Body

Length (mm)	4882
Width (mm)	1820
Height (mm)	1461
Wheelbase (mm)	2954
Front Track (mm)	1589
Rear Track (mm)	1563
Door Opening Type	swing door
Number of Doors	4
Number of Seats	5
Fuel Tank Capacity (L)	66
Trunk volume (L)	-
Drag Coefficient (Cd)	-
Approach Angle (°)	15

Body (continued)

Departure Angle (°)	18
----------------------------	----

Gearbox

Abbreviation	9-gear manual integration
Number of Gears	9
Transmission Type	Automatic Transmission with Manual Mode (AT)

Chassis steering

Drive Type	Front-engine, Rear-wheel drive (FR)
Front Suspension Type	Multi-link independent suspension
Rear Suspension Type	Multi-link independent suspension
Power Steering Type	Electric power assistance
Vehicle structure	bearing type

Seat Configuration

Seat Material	<input type="radio"/> Genuine leather; <input type="checkbox"/> Imitation leather
Main seat adjustment	<ul style="list-style-type: none">• Front and rear adjustment;• Backrest adjustment;• Height adjustment (4-way);• Leg rest adjustment;• Lumbar support (4-way)
Co-seat adjustment method	<ul style="list-style-type: none">• Front and rear adjustment;• Backrest adjustment;• Height adjustment (4-way);• Leg rest adjustment;• Lumbar support (4-way)
Electric adjustment of driver's seat and passenger seat	Main <input type="checkbox"/> /Deputy <input type="checkbox"/>
Front seat functions	<input type="radio"/> Heating; <input type="radio"/> Ventilation
Electric seat memory function	<input type="radio"/> Driving position
Front passenger seat rear adjustable buttons	<ul style="list-style-type: none">•
Front/rear center armrest	Front <input type="checkbox"/> /Rear <input type="checkbox"/>
Rear cup holder	<ul style="list-style-type: none">•
Second row seat functions	<input type="radio"/> Heating
Sports style seats	<ul style="list-style-type: none">•

Active safety

Anti-lock Braking System (ABS)	<ul style="list-style-type: none">•
---------------------------------------	---

Active safety (continued)

Electronic Brakeforce Distribution (EBD/CBC)	•
Brake Assist System (EBA/BAS/BA)	•
Traction Control System (ASR/TCS/TRC)	•
Electronic Stability Control (ESC/ESP/DSC)	•
Tire Pressure Monitoring System (TPMS)	• Tire pressure display
Seat Belt Reminder	• Full car
ISOFIX Child Seat Anchors	•
Lane Departure Warning System (LDWS)	•
Autonomous Emergency Braking (AEB)	•
Driver Fatigue Detection	•
Emergency Call System (eCall)	•
Built-in Dashcam	•

Air conditioning/refrigerator

Air conditioning temperature control method	• Automatic air conditioning
Rear Independent Climate Control	-
Rear seat air vents	•
Temperature zone control	•
Car air purifier	•
In-cabin PM2.5 Filter	•
Negative ion generator	○
Car fragrance device	○

Passive safety

Driver/passenger airbag	Main •/Deputy •
Front/rear side airbags	Front •/Rear-
Front/rear head airbags (curtain airbags)	Front •/Rear •
Passive pedestrian protection	•

Wheel brake

Wheel brake (continued)

Front Brake Type	Ventilation disc
Rear Brake Type	Ventilation disc
Parking brake type	Electronic Parking
Front Tire Size	225/45 R18
Rear Tire Size	255/40 R18
Spare Tire Size	None

Audio/Interior Lighting

Speaker Brand Name	<input type="radio"/> Burmester Voices of Berlin
Number of speakers	<input checked="" type="checkbox"/> 5 horns; <input type="checkbox"/> 15 horns
Interior ambient lighting	<input checked="" type="checkbox"/> 64 colors

Driving functions

Navigation traffic information display	<input checked="" type="checkbox"/>
Lane assist	<input type="checkbox"/>
Lane Keeping Assist System	<input checked="" type="checkbox"/>
Cruise control system	<input checked="" type="checkbox"/> Cruise control; <input type="checkbox"/> Full speed adaptive cruise
Satellite navigation system	<input checked="" type="checkbox"/>
Parking Assist	<input checked="" type="checkbox"/>

Exterior lighting

Low beam light source	<input checked="" type="checkbox"/> LED
High beam light source	<input checked="" type="checkbox"/> LED
LED daytime running lights	<input checked="" type="checkbox"/>
Adaptive high and low beam	<input checked="" type="checkbox"/>
Automatic headlights	<input checked="" type="checkbox"/>
Height-adjustable headlights	<input checked="" type="checkbox"/>
Headlight Delay Off	<input checked="" type="checkbox"/>
Lighting features	<input type="checkbox"/> Pixel-based
Turn headlights	<input type="checkbox"/>

Exterior mirrors

Exterior mirrors (continued)

Exterior mirror function	<ul style="list-style-type: none">• Electric adjustment;• Electric folding;○ Rearview mirror memory;• Rearview mirror heating;○ Automatic downturning when reversing;• Automatic folding when locked;○ Automatic anti-glare
---------------------------------	---

Appearance/anti-theft

Rim material	<ul style="list-style-type: none">• Aluminum alloy
Electric trunk	○
Electronic engine immobilizer	<ul style="list-style-type: none">•
Central locking system in the car	<ul style="list-style-type: none">•
Key Type	<ul style="list-style-type: none">• Remote key
Keyless start system	<ul style="list-style-type: none">•
Keyless entry function	○ Whole vehicle
Appearance Kit	<ul style="list-style-type: none">• Sports style
Hands-free Trunk	○
Remote start function	<ul style="list-style-type: none">•

Skylight/Glass

Sunroof Type	<ul style="list-style-type: none">• Sectional electric sunroof
Front/rear electric windows	Front •/Rear •
One-touch window lifting function	<ul style="list-style-type: none">• Full car
Window anti-pinch function	<ul style="list-style-type: none">•
Car makeup mirror	<ul style="list-style-type: none">• Main driver's lamp;• co-pilot's lamp
Rear wiper	-
Rain sensor wiper function	<ul style="list-style-type: none">• Rainfall-sensing

Interior and exterior color

Exterior Color	Fritillaria white:#E6E6E6; Hao Sha Yin:#D7DCDC; Obsidian black:#000000; Time and space silver:#ACACAE; Sea night blue:#143882; Zircon quartz red:#B00D15; Iridium silver:#D7DBE9; Turquoise green:#193A48; Arctic white:#F4F4F4; Graphite gray:#4E5158
-----------------------	--

Interior and exterior color (continued)

Interior Color	Black:#000000; Black/Flaming Red:#000000/#621C27; Black/Ocher Brown:#000000/#773B34; Black/Macchiato Beige:#000000/#D4D0CF; Black/Titanium Grey:#000000/#2C2D31
-----------------------	---

Steering wheel/interior mirror

Steering Wheel Material	• Leather
Steering wheel position adjustment	• Manual up and down front and rear adjustment; ○ Electric up and down front and rear adjustment
Multi-function steering wheel	•
Heated Steering Wheel	-
Steering wheel memory	○
Trip computer display screen	• Color
Full LCD instrument panel	•
LCD instrument size	• 12.3 inches
Interior rearview mirror function	• Manual anti-glare; ○ Automatic anti-glare
HUD Head Up Digital Display	○
Steering Wheel Shift Paddles	•

Intelligent configuration

Connected Car Services	•
OTA Updates	•

Driving Control

Driving mode switch	• Sport; • Economy; • Standard/Comfort
Automatic parking	•
Hill start assist	•
Variable steering ratio	•
Engine start-stop technology	•

Driving Hardware

Front/rear parking radar	Front •/Rear •
Driving Assistance Camera System	• Reversing image

In-car charging

In-car charging (continued)

Multimedia/charging port	•Type-C
Number of USB/Type-C ports	• 3 in the front row/2 in the back row; ○ 4 in the front row/2 in the back row
Mobile phone wireless charging function	• Front row

Optional Package

Optional Package	Zhilian package (USD 441; Including: MBUX intelligent human-computer interaction system real-life navigation, MBUX intelligent human-computer interaction system (upgraded version)); Smart package (USD 585; Including: MBUX intelligent human-computer interaction system (upgraded version), in-car air conditioning components, and refreshing function); Zhile package (USD 1,174; Including: Burmester 3D surround stereo sound system and personalized sound effect settings); smart driving package (USD 2,676; Including: rearview mirror component, driver assistance component enhanced version); Smart driving package (USD 2,912; Including: rearview mirror component, driver assistance component enhanced version, preventive safety system (PRE-SAFE))
-------------------------	---

"●" = Standard equipment

"_" = Not available

"○" = Optional equipment.

Note: These are Chinese market vehicles. Warranty coverage is not available outside of China.