

Vehicle Detail Report

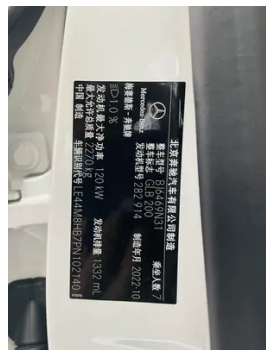
Mercedes-Benz GLB 2023 GLB 200 Fashionable

Basic Information

Brand	Mercedes-Benz
Mileage	35,100 km
Color	White
First Registration	2023-05-01
Transfer Count	0

Vehicle Images





Vehicle Condition

1. Inner side of left B-pillar, Non-accident-related deformation.

Configuration Information

Model Information

Model Name	Mercedes-Benz GLB 2023 GLB 200 Fashionable
-------------------	--

Model Information (continued)

Launch Date	2022.09
-------------	---------

Basic parameters

Vehicle Class	Compact SUV
Energy Type	Gasoline
Maximum Power (kW)	120
Maximum Torque (N·m)	250
Transmission	7-speed wet dual-clutch
Body Type	SUV
Engine	1.3T 163 horsepower L4
Dimensions (L×W×H) (mm)	4638*1834*1692
Official 0-100 km/h Acceleration (s)	9.4
Top Speed (km/h)	200
Curb Weight (kg)	1639
Maximum Gross Weight (kg)	2270
WLTP Combined Fuel Consumption (L/100km)	7.07

engine

Engine Model	282 914
Displacement (mL)	1332
Displacement (L)	1.3
Induction Type	Turbocharging
Cylinder Arrangement	L
Number of Cylinders	4
Valves per Cylinder	4
Valve Train	DOHC
Maximum Power (PS)	163
Max Power Speed (rpm)	5500
Max Torque Speed (rpm)	1620-4000
Maximum net power (kW)	120
Fuel Grade	95.
Fuel Delivery System	Direct injection
Cylinder Head Material	Aluminum alloy

engine (continued)

Cylinder Block Material	Aluminum alloy
Engine layout	Horizontal

Screen/System

Central control color screen	<ul style="list-style-type: none">• Touch LCD screen
Infotainment Screen Size	<ul style="list-style-type: none">• 10.25 inches
Bluetooth/In-car Phone	<ul style="list-style-type: none">•
Smartphone Integration/Mirroring	<ul style="list-style-type: none">• Support CarPlay;• Support CarLife;• Support Android Auto
Voice recognition control system	<ul style="list-style-type: none">• Multimedia system;• Navigation;• Telephone;• Air conditioning
In-vehicle intelligent system	<ul style="list-style-type: none">•MBUX

Body

Length (mm)	4638
Width (mm)	1834
Height (mm)	1692
Wheelbase (mm)	2829
Front Track (mm)	1590
Rear Track (mm)	1589
Door Opening Type	swing door
Number of Doors	5
Number of Seats	7
Trunk volume (L)	-
Drag Coefficient (Cd)	-
Approach Angle (°)	19
Departure Angle (°)	24

Gearbox

Abbreviation	7-speed wet dual-clutch
Number of Gears	7
Transmission Type	Wet Dual-Clutch Transmission (DCT)

Chassis steering

Drive Type	Front-engine, Front-wheel drive (FF)
Front Suspension Type	MacPherson independent suspension
Rear Suspension Type	Multi-link independent suspension

Chassis steering (continued)

Power Steering Type	Electric power assistance
Vehicle structure	bearing type

Seat Configuration

Seat Material	<ul style="list-style-type: none">• Imitation leather
Main seat adjustment	<ul style="list-style-type: none">• Front and rear adjustment;• Backrest adjustment;• Height adjustment (4-way);• Leg rest adjustment;• Lumbar support (4-way)
Co-seat adjustment method	<ul style="list-style-type: none">• Front and rear adjustment;• Backrest adjustment;• Height adjustment (4-way)
Electric adjustment of driver's seat and passenger seat	Main/Deputy-
Front seat functions	<input type="radio"/> Heating (USD 382)
Front passenger seat rear adjustable buttons	-
Second row seat adjustment	<ul style="list-style-type: none">• Front and rear adjustment;• Backrest adjustment
Rear seat folding	<ul style="list-style-type: none">• Proportional down
Front/rear center armrest	Front •/Rear •
Rear cup holder	<ul style="list-style-type: none">•
Seat Layout	•2-3-2

Active safety

Anti-lock Braking System (ABS)	<ul style="list-style-type: none">•
Electronic Brakeforce Distribution (EBD/CBC)	<ul style="list-style-type: none">•
Brake Assist System (EBA/BAS/BA)	<ul style="list-style-type: none">•
Traction Control System (ASR/TCS/TRC)	<ul style="list-style-type: none">•
Electronic Stability Control (ESC/ESP/DSC)	<ul style="list-style-type: none">•
Tire Pressure Monitoring System (TPMS)	<ul style="list-style-type: none">• Tire pressure display
Seat Belt Reminder	<ul style="list-style-type: none">• Front row;• Second row
ISOFIX Child Seat Anchors	<ul style="list-style-type: none">•
Lane Departure Warning System (LDWS)	-

Active safety (continued)

Autonomous Emergency Braking (AEB)	•
Driver Fatigue Detection	•
Forward Collision Warning (FCW)	•
Emergency Call System (eCall)	•

Air conditioning/refrigerator

Air conditioning temperature control method	• Automatic air conditioning
Rear Independent Climate Control	-
Rear seat air vents	•
Temperature zone control	-
Car air purifier	-
In-cabin PM2.5 Filter	-

Passive safety

Driver/passenger airbag	Main •/Deputy •
Front/rear side airbags	Front/rear rear side airbag (USD 500)
Front/rear head airbags (curtain airbags)	Front •/Rear •

Wheel brake

Front Brake Type	Ventilation disc
Rear Brake Type	Disc
Parking brake type	Electronic Parking
Front Tire Size	235/55 R18
Rear Tire Size	235/55 R18
Spare Tire Size	None

Audio/Interior Lighting

Number of speakers	• 7 speakers
Interior ambient lighting	○ 64 colors (USD 353)

Driving functions

Navigation traffic information display	•
Lane assist	-

Driving functions (continued)

Lane Keeping Assist System	-
Cruise control system	• Cruise control
Satellite navigation system	•
Map Brand	• Gaud
Parking Assist	•

Exterior lighting

Low beam light source	•LED
High beam light source	•LED
LED daytime running lights	•
Adaptive high and low beam	-
Automatic headlights	•
Height-adjustable headlights	•
Headlight Delay Off	•

Exterior mirrors

Exterior mirror function	•Electric adjustment; •Electric folding; •Rearview mirror heating; •Automatically turn down when reversing; •Automatically fold when locking the car
---------------------------------	--

Appearance/anti-theft

Rim material	• Aluminum alloy
Electric trunk	-
Electronic engine immobilizer	•
Central locking system in the car	•
Key Type	• Remote key
Keyless start system	•
Roof rack	•

Skylight/Glass

Sunroof Type	• Sectional electric sunroof
Front/rear electric windows	Front •/Rear •

Skylight/Glass (continued)

One-touch window lifting function	<ul style="list-style-type: none">• Full car
Window anti-pinch function	<ul style="list-style-type: none">•
Car makeup mirror	<ul style="list-style-type: none">• Main driver's lamp; • co-pilot's lamp
Rear wiper	<ul style="list-style-type: none">•
Rain sensor wiper function	<ul style="list-style-type: none">• Rainfall-sensing

Interior and exterior color

Exterior Color	Cosmic black:#13120E; Arctic white:#F4F4F4; Hao Sha Yin:#D7DCDC; Lava red:#B52E39; Mountain gray:#2F302A; Matte mountain gray:#424242; Sapphire blue:#0D2C95
Interior Color	Black/Brown:#000000/#543E41; Black:#000000; Black/Macchiato Beige:#000000/#D4D0CF

Steering wheel/interior mirror

Steering Wheel Material	<ul style="list-style-type: none">• Leather
Steering wheel position adjustment	<ul style="list-style-type: none">• Manual up and down front and rear adjustment
Multi-function steering wheel	<ul style="list-style-type: none">•
Heated Steering Wheel	-
Steering wheel memory	-
Trip computer display screen	<ul style="list-style-type: none">• Color
Full LCD instrument panel	<ul style="list-style-type: none">•
LCD instrument size	<ul style="list-style-type: none">• 10.25 inches
Interior rearview mirror function	<ul style="list-style-type: none">• Manual anti-glare
Gear shifting	<ul style="list-style-type: none">• Electronic gear shift
ETC Device	○(USD 441)
Steering Wheel Shift Paddles	<ul style="list-style-type: none">•

Intelligent configuration

Connected Car Services	<ul style="list-style-type: none">•
OTA Updates	<ul style="list-style-type: none">•
4G/5G Network	<ul style="list-style-type: none">•4G

Driving Control

Driving mode switch	• Sport; • Economy; • Standard/Comfort
Automatic parking	•
Hill start assist	•
Engine start-stop technology	•

Driving Hardware

Front/rear parking radar	Front •/Rear •
Driving Assistance Camera System	• Reversing image

In-car charging

Multimedia/charging port	•Type-C
Number of USB/Type-C ports	• 2 in the front/3 in the back

"●" = Standard equipment

"-" = Not available

"○" = Optional equipment.

Note: These are Chinese market vehicles. Warranty coverage is not available outside of China.